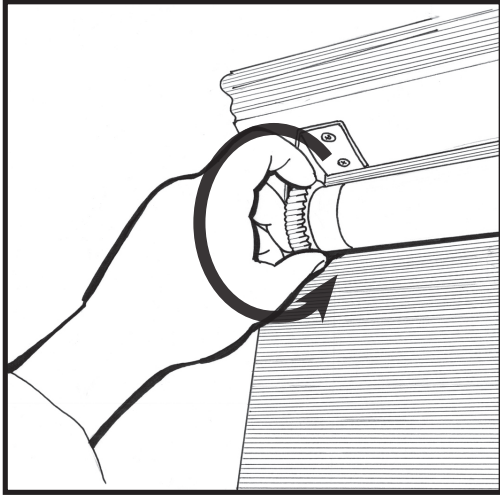


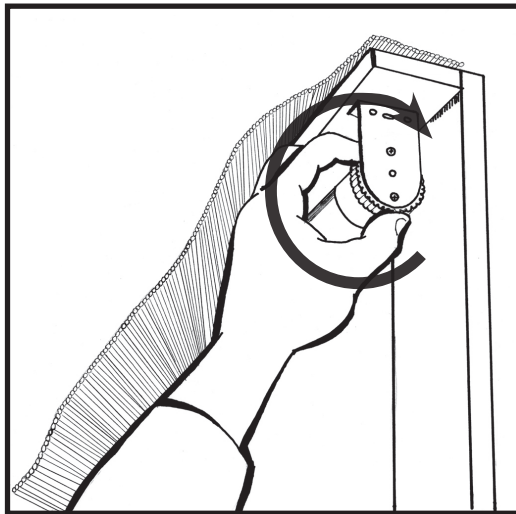
## Releasing a Locked Shade

A shade may become stuck in the down position if pulled with excessive force.

To release if locked in the down position:



If the adjustment wheel is on the **LEFT**, turn it 1/4 of a turn in this direction.

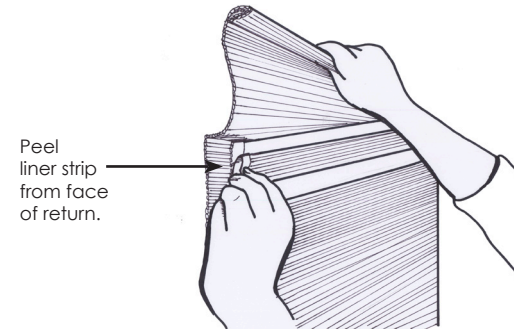


If the adjustment wheel is on the **RIGHT**, turn it 1/4 of a turn in this direction.

## Deluxe Return Instructions

If your Natural Shade was ordered with Deluxe Returns:

1. Lift the valance up.



2. Peel the liner strip off the double sided tape on the face of the return.



3. Pull the valance flat to align neatly with the return. Press the valance firmly against the return face to adhere the valance to the return. Repeat steps for opposite return.

**Note:** If your shade is a waterfall style (shade comes off front of headrail), lift the shade away from the return and attach the shade to the return as indicated in steps 2 and 3.

## Warning

Young children can **STRANGLE** in cord and bead chain loops. They can also wrap cords around their necks and **STRANGLE**.



- Always keep cords and bead chains out of children's reach.
- Move cribs, playpens, and other furniture away from cords and bead chains. Children can climb furniture to get to cords.
- Do not tie cords together. Make sure cords do not twist together and create a loop.
- Attach tension device to wall or floor. This can prevent children from pulling cords and bead chains around their necks. Fasteners provided with the tension device may not be appropriate for all mounting surfaces. Use appropriate anchors for the mounting surface conditions.
- Do not remove looped cord from cord shroud.

## Care and Cleaning

It is recommended that Natural Woven Shades be vacuumed periodically with a brush attachment or drapery hose attachment.

06/2016

Installation Instructions for

## Designer Series Woven Wood Shades - Cordless



Featuring

cordless  
**ONE**  
controls™

Congratulations on  
the purchase of your new Natural  
Woven Shades

 **SelectBlinds®**

## New York Bracket Installation

New York Brackets are standard for all inside and outside mount installations.

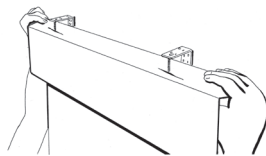
### 1. Prepare the Headrail:

The headrail of your shade has been slotted for New York brackets.

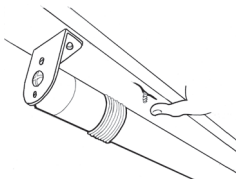


### 2. Install the Brackets:

Install the New York Brackets to line up with the slots in the headrail. Make sure all the brackets are level with each other.

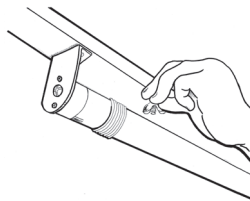


Remove the wing nuts from the "New York" brackets and slide the shade into position by sliding the shafts of the brackets into the slots cut into the top of the headrail.



### 3. Secure the Shade:

While holding up the shade, reattach the wing nuts to the "New York" brackets and tighten.



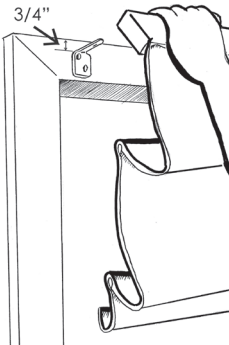
**Note:** Extended New York Brackets are available for outside mounted shades and project the shade out an extra 3/4".

## "L" Bracket Installation

"L" Brackets are an alternative outside mount bracket.

### 1. Install the Brackets:

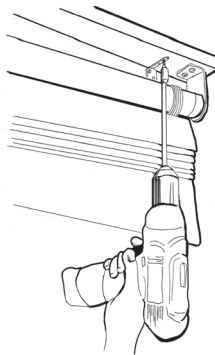
Install the top of "L" bracket 3/4" down from where the top of the shade measurement was taken. Make sure all the brackets are level. One bracket should be mounted 5" from each end of the shade. Intermediate brackets should be spaced evenly in between.



### 2. Put Up the Shade:

Place the headrail on top of the mounted "L" brackets and then secure the shade to the brackets using the provided 3/4" screws.

**If your shade has a valance**, slide the headrail of the shade into the brackets, guiding the prong between the slats and weaving cords. If weaving cords interfere, merely shift them to the side. **DO NOT CUT WEAVING CORDS!**

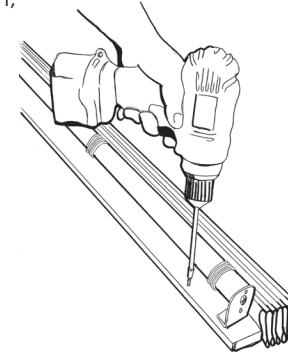


## 2" Screw Installation (IM Only)

2" screws are a quick and easy alternative inside mount installation method.

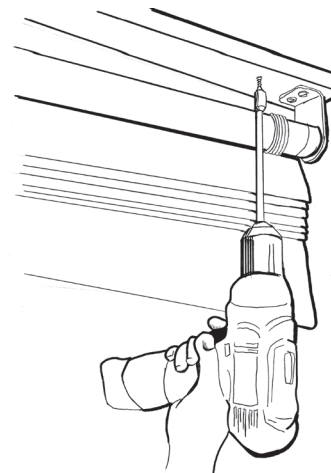
### 1. Insert the Mounting Screws:

With the shade down, insert the mounting screws from the bottom side of the headrail. One screw should be mounted 5" from each end of the shade. Intermediate screws should be spaced evenly in between.



### 2. Position the Shade:

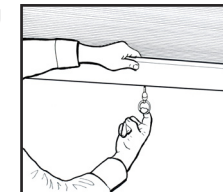
Hold the shade up and position it in the window opening. Drive the mounting screws up through the headrail into the inside of the window opening, soffit, or ceiling.



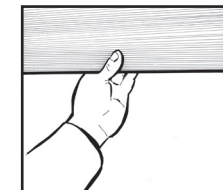
## Cordless ONE Controls™

Always use the control ring to operate your shade.

Just like a spring roller shade, a simple quick tug will get it started.



Never pull on the hem to operate your shade.

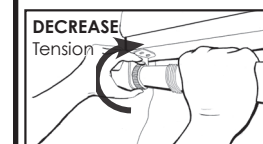
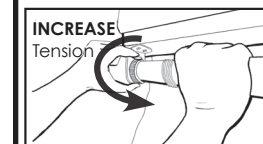


## Adjusting Spring Tension

The tension of your shade can be adjusted to make it go up faster or slower with the white adjustment wheel at the end of the drive tube.

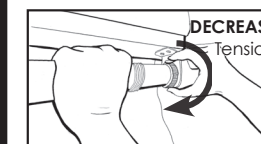
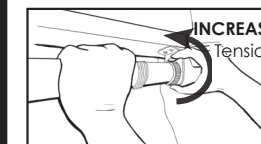
**If your adjustment wheel in on the LEFT side of your shade follow these directions.**

1. Raise the shade fully to the top.
2. Grasp the tube with your right hand making sure it does not rotate.
3. Referring to the pictures below, turn the white ribbed wheel in the direction of the arrow one full rotation.
4. Test the shade. Repeat if necessary.



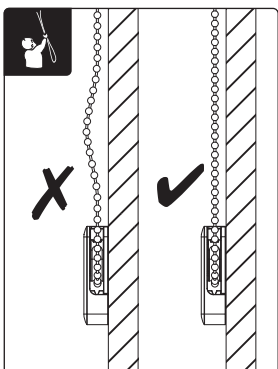
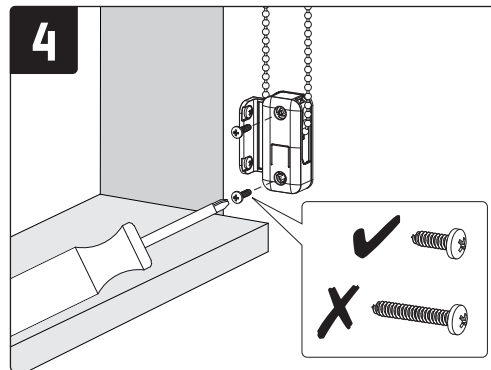
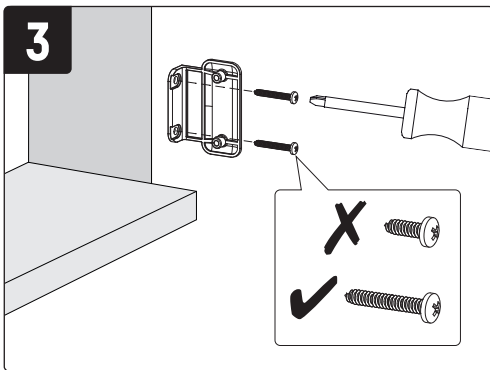
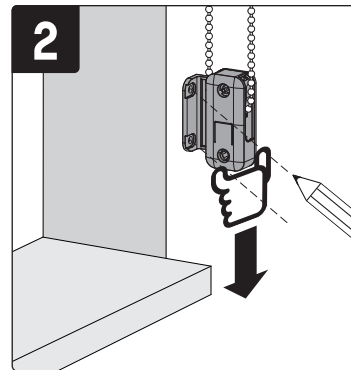
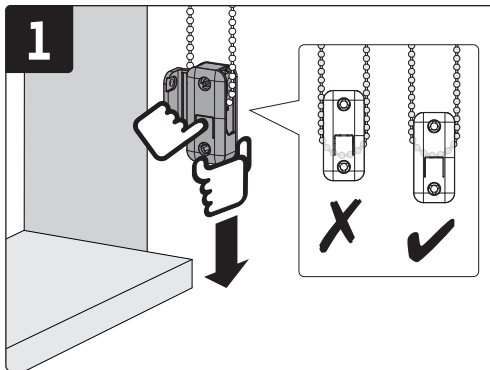
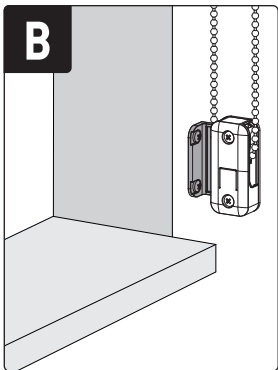
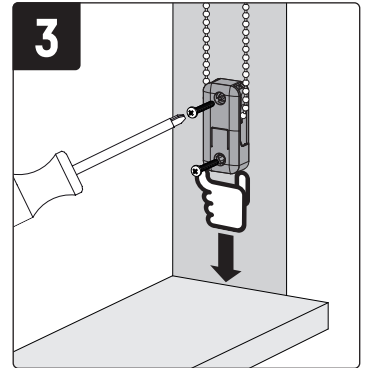
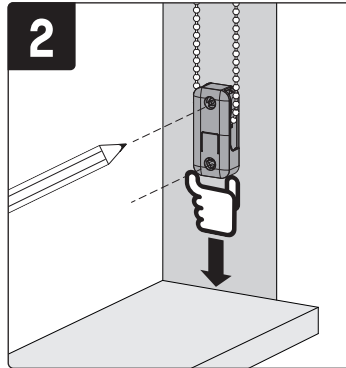
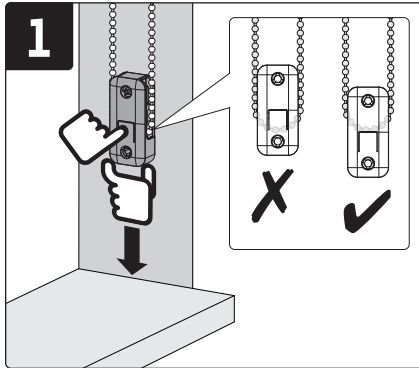
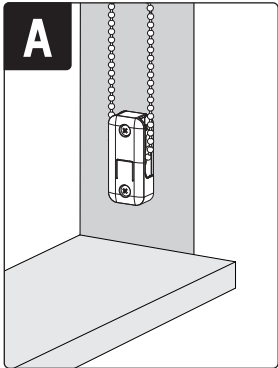
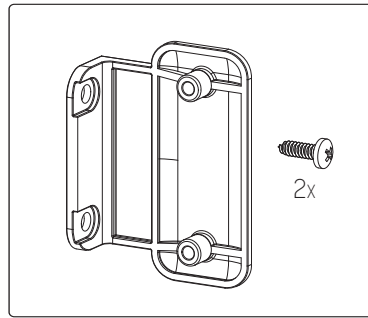
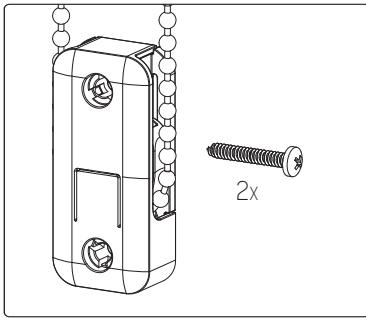
**If your adjustment wheel in on the RIGHT side of your shade follow these directions.**

1. Raise the shade fully to the top.
2. Grasp the tube with your left hand making sure it does not rotate.
3. Referring to the pictures below, turn the white ribbed wheel in the direction of the arrow one full rotation.
4. Test the shade. Repeat if necessary.



# WARNING

The safety device must be applied on chain loops and prevents free-hanging loops in operating chains.  
Install the safety device at the maximum distance possible from the control mechanism to prevent slack in the loop.

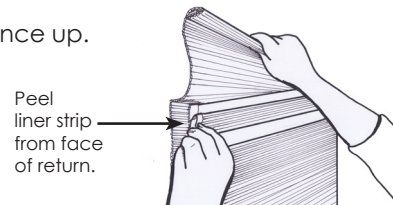




## Deluxe Return Instructions

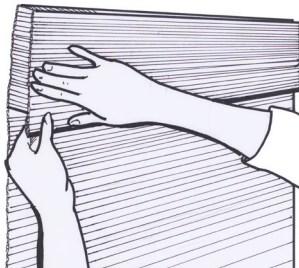
If your Natural Shade was ordered with Deluxe Returns:

1. Lift the valance up.



2. Peel the liner strip off the double sided tape on the face of the return.

3. Pull the valance flat to align neatly with the return. Press the valance firmly against the return face to adhere the valance to the return. Repeat steps for opposite return.



**Note:** If your shade is a waterfall style (shade comes off front of headrail), lift the shade away from the return and attach the shade to the return as indicated in steps 2 and 3.

## Warning

Young children can STRANGLE in cord and bead chain loops. They can also wrap cords around their necks and STRANGLE.



- Always keep cords and bead chains out of children's reach.
- Move cribs, playpens, and other furniture away from cords and bead chains. Children can climb furniture to get to cords.
- Do not tie cords together. Make sure cords do not twist together and create a loop.
- Attach tension device to wall or floor. This can prevent children from pulling cords and bead chains around their necks. Fasteners provided with the tension device may not be appropriate for all mounting surfaces. Use appropriate anchors for the mounting surface conditions.
- Do not remove looped cord from cord shroud.

### Canadian Customers: For More Safety Information

1-866-662-0666 • [www.healthcanada.gc.ca/blindcords](http://www.healthcanada.gc.ca/blindcords)

### Pour Plus De Renseignement Sur La Sécurité:

1-866-662-0666 • [www.healthcanada.gc.ca/cordons-stores](http://www.healthcanada.gc.ca/cordons-stores)

## Care and Cleaning

It is recommended that Natural Woven Shades be vacuumed periodically with a brush attachment or drapery hose attachment.

06/2016

Installation Instructions for

## Designer Series Woven Wood Shades - Corded



Congratulations on the purchase of your new Natural Woven Shades

 **SelectBlinds®**

## "New York" Bracket Installation

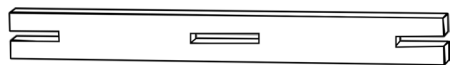


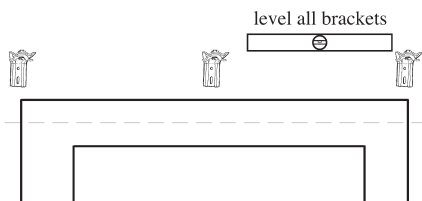
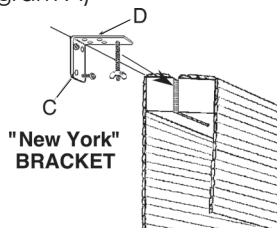
Diagram A

### 1. Prepare the Headrail:

The headrail of your shade has been slotted for New York brackets. (Diagram A)

### 2. Mount the Brackets:

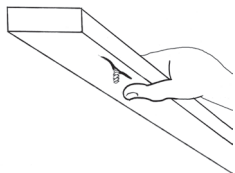
The Extended "New York" brackets can be used either for an inside or outside mount application. Install the New York brackets in the window to line up with the slots in the headrail. Mount the brackets using the holes "C" for outside mounts or holes "D" for inside mounts. Screws provided are appropriate for wood installations, or use your own fasteners.



Be sure to use all the brackets provided. A level and well supported shade will ensure smooth operation.

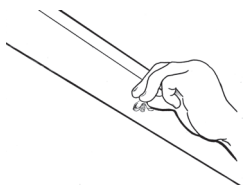
### 3. Put Up the Shade:

Remove the wing nuts from the "New York" brackets and slide the shade into position by sliding the shafts of the brackets into the slots cut into the top of the headrail.



### 4. Secure the Shade:

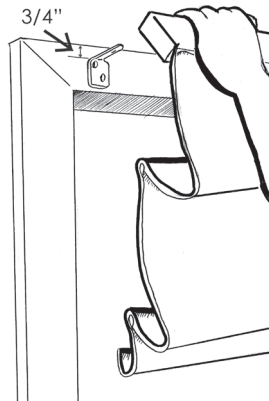
While holding up the shade, reattach the wing nuts to the "New York" brackets and tighten.



## "L" Bracket Installation

### 1. Mount the Brackets:

The "L" brackets are intended for outside (frame or wall) mount only. Mount the brackets 3/4" down from where the top of the shade measurement was taken. Screws provided are appropriate for wood installations, or use your own fasteners.



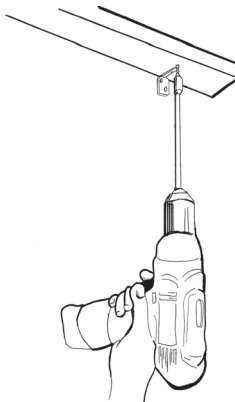
### 2. Put Up the Shade:

Place the headrail on top of the mounted "L" brackets and then secure the shade to the brackets using the provided 3/4" screws.

**If your shade has a valance**, slide the headrail of the shade into the brackets, guiding the prong between the slats and weaving cords. If the weaving cords interfere, merely shift them to the side. **DO NOT CUT WEAVING CORDS!**

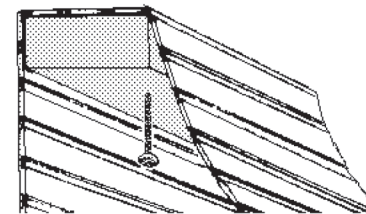
### 3. Secure the Shade:

Fasten shade to brackets with a screw inserted from below.



## 2" or 3" Screw Installation

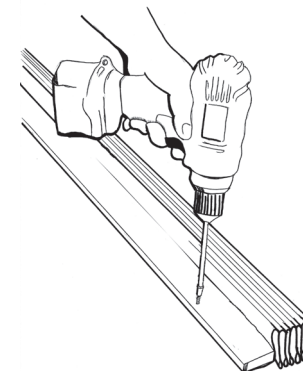
2" or 3" screws are a quick and easy alternative inside mount installation method.



2" or 3" Screw

### 1. Insert the Mounting Screws:

With the shade down, insert the mounting screws from the bottom side of the headrail. One screw should be mounted 5" from each end of the shade. Intermediate screws should be spaced evenly in between. Use the correct number of screws.



### 2. Position the Shade:

Hold the shades up and position it in the window opening. Drive the mounting screws up through the headrail into the inside of the window opening, soffit, or ceiling.

