



Oasis® Outdoor Shades Installation Instructions



Scan for Installation Video

Contents

1.0 Overview	2
1.1 Tools	2
2.0 Bracket Assembly and Mounting	3
2.1 Manual Crank Bracket Orientations	3
2.2 Upper Cable Retainer Install	3
2.3 Bracket Location and Mounting	4
3.0 Shade Installation	4
3.1 Shade Removal	5
4.0 Cable Guide Installation	5
4.1 Hem Bar Installation	5
4.2 Cable Guide Installation	5
4.21 Tension Bolt Assembly	6
4.22 Adjusting Cable Tension	7
5.0 Shade Operation	7
6.0 Fabric Telescope Adjustment	8



Oasis® Outdoor Shades Installation Instructions

1.0 Overview

The following installation instructions are for Insolroll's Oasis®1800 patio shades. This exterior product is an exposed manual crank and gear system that utilizes our cable guide fabric retention system. Before beginning the installation be aware that mounting screws are not provided. The type and size of screw required are project specific and will vary depending upon the mounting surface.

1.1 Tools



Screw/drill gun with bit
extender



Phillips Head Screwdriver



Pliers



Sharp Cable Cutters
(Knipex 95 61 150 recommended)



Tape Measure



Level



Appropriate Fasteners
(not included)
& Corresponding Bit



Oasis® Outdoor Shades Installation Instructions

2.0 Bracket Assembly and Mounting

You will receive one manual crank bracket and one spring loaded idler bracket for each shade you are installing. There are no end plates for exposed applications, the brackets and screw heads are painted for a finished look.

Manual Crank



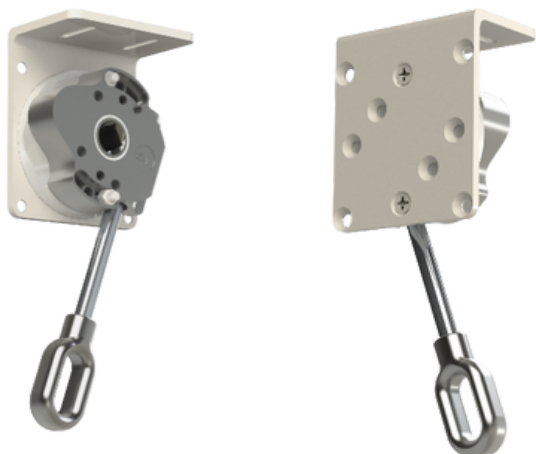
Spring Loaded Idler



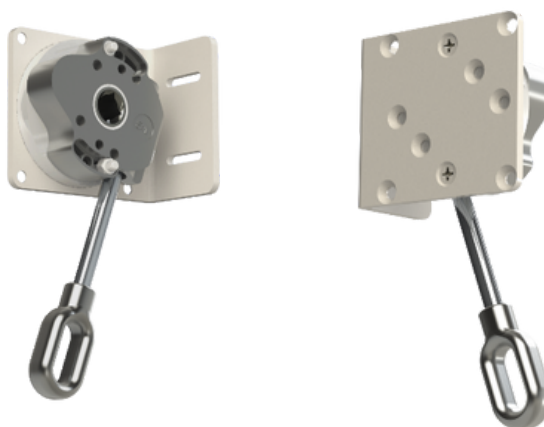
2.1 Manual Crank Bracket Orientations

The Oasis 1800 systems are shipped with pre-assembled gear and idler bracket assemblies. In the event that you need to change the orientation of the manual crank gear, you can do so without needing additional parts. Simply remove the screws and lock nuts to disassemble the bracket, plastic spacer and gear. Re-orient the gear using the following images for the desired application.

Ceiling Mount



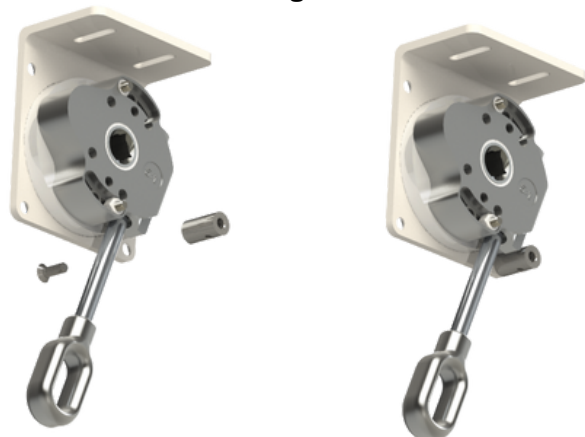
Wall Mount



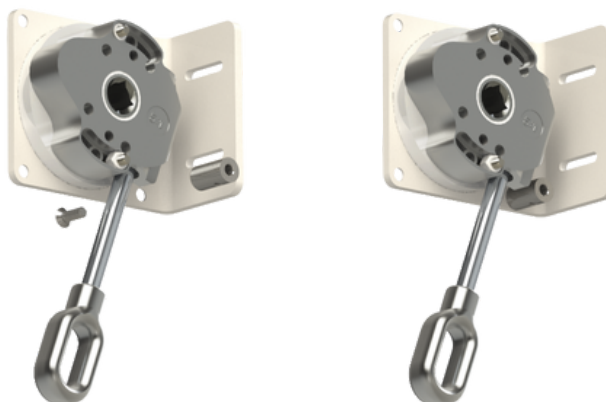
2.2 Upper Cable Retainer Install

Locate the upper cable retainer and the corresponding screw in the cable hardware package. Use the following images to install the cable retainer in the correct orientation for your application.

Ceiling Mount



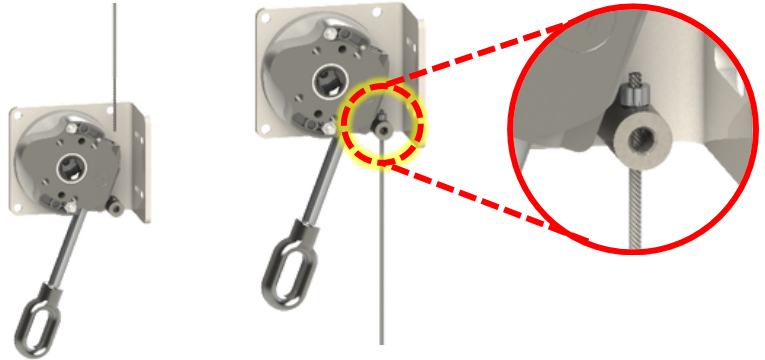
Wall Mount





Oasis® Outdoor Shades Installation Instructions

After installing the cable retainer, feed the un-crimped end of the stainless steel cable through the cable retainer. Pull the cable through the cable retainer until the crimped end of the cable sits against the cable retainer.



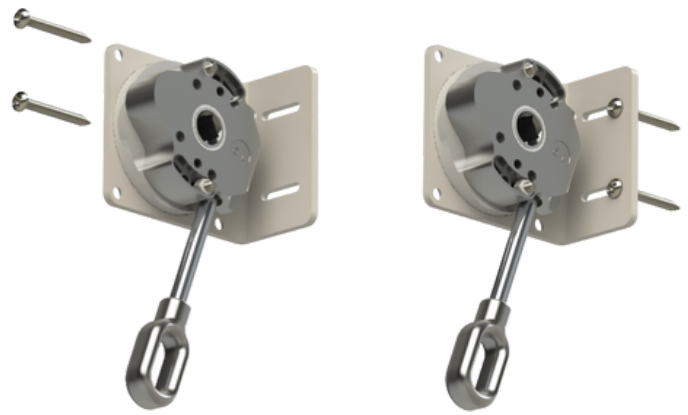
2.3 Bracket Location and Mounting

Mark the location of the brackets noting that the bracket-to-bracket width equals shade order width. For proper shade operation, brackets must be mounted perfectly level. Verify using a tape measure and level.

Ceiling Mount

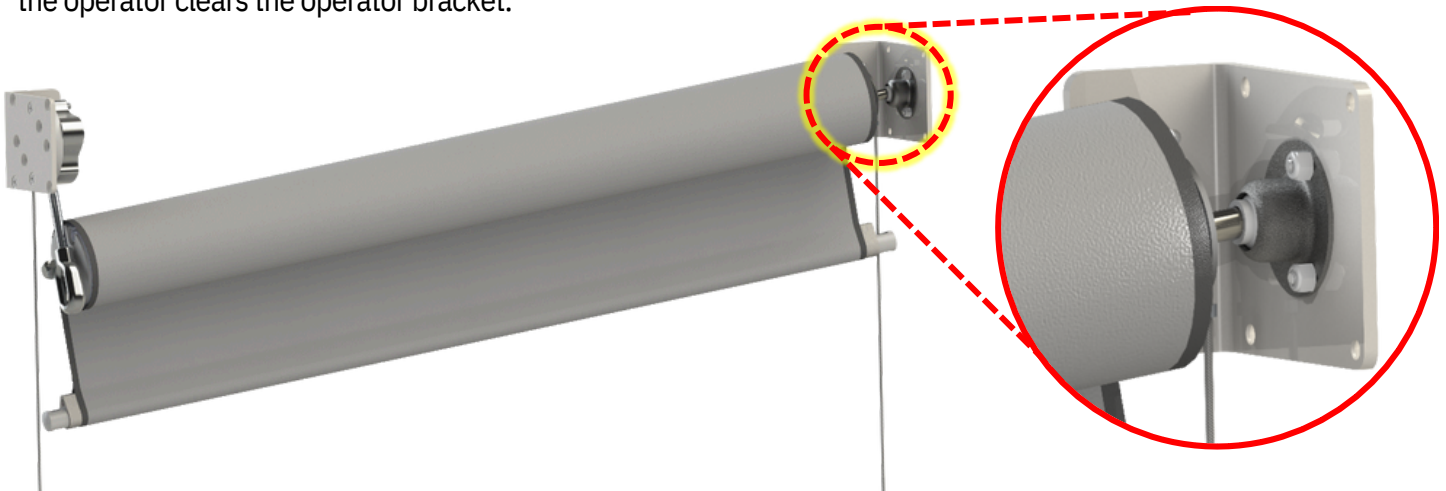


Wall Mount



3.0 Shade Installation

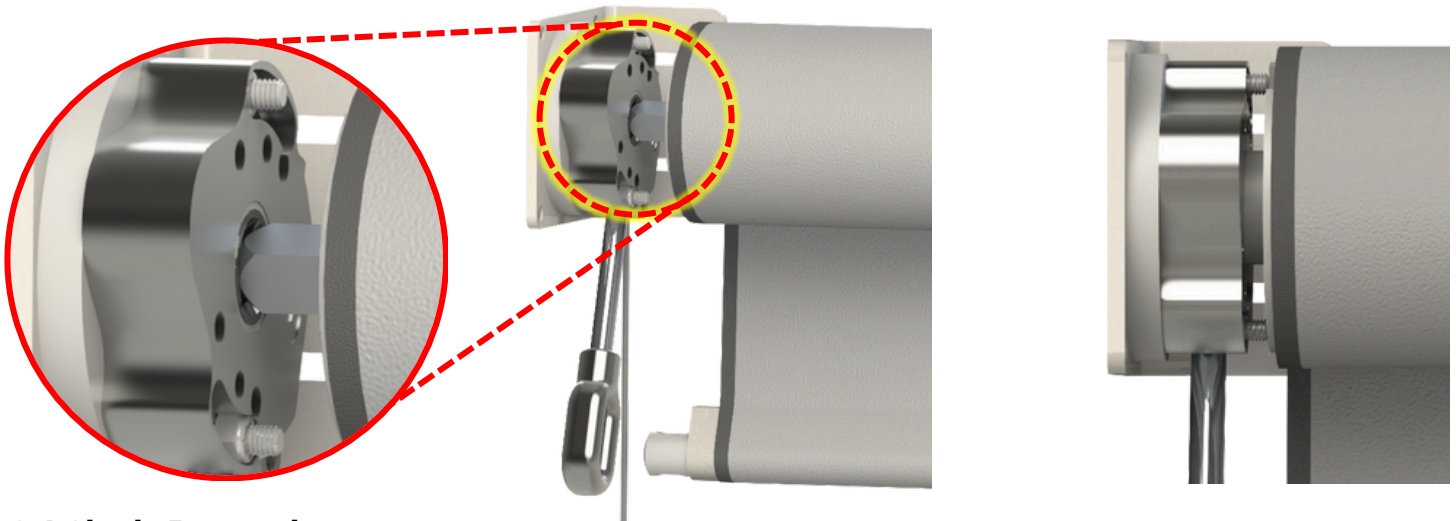
Install the shade by carefully inserting the idler pin into the plastic ball on the idler bracket and compress the idler so the operator clears the operator bracket.





Oasis® Outdoor Shades Installation Instructions

Align the lug on the shade to fit into the gear on the manual crank bracket. Ensure that the lug is fully seated.



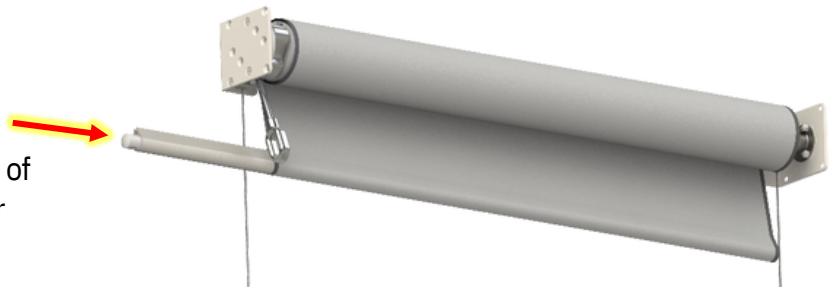
3.1 Shade Removal

To remove the shade, reverse the above installation instructions. Begin by moving the shade toward the idler to compress the idler enough so that the lug is fully removed and can clear the gear. Then remove the idler pin from the idler bracket.

4.0 Cable Guide Installation

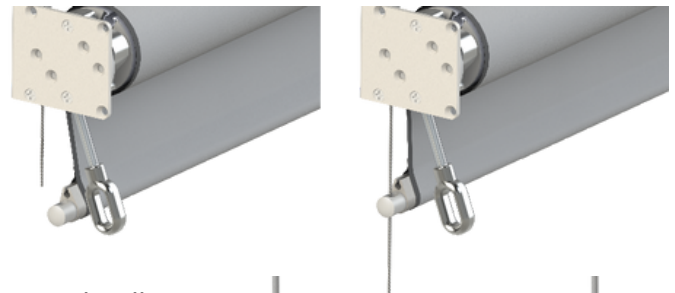
4.1 Hem Bar Installation

Slide the hem bar through the hem bar pocket of the shade. Ensure it is centered in the hem bar pocket.

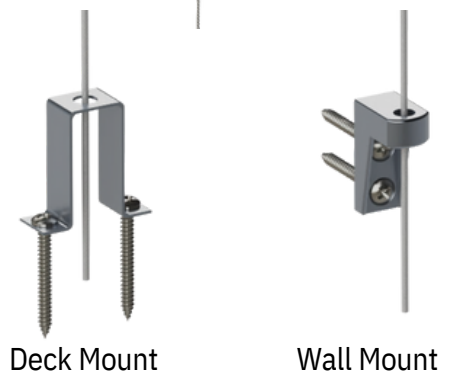


4.2 Cable Guide Installation

Begin by guiding the cable through the nylon cable guide pin on the operator side. Repeat the process on the idler side.



Insolroll offers two options for lower cable brackets: deck mount and wall mount. Use the cable to determine your bracket location. Use a tape measure to ensure the cables run parallel to each other. Use a level to ensure the cables also run completely vertical. Mount the lower cable brackets in the determined location that will allow the cables to run parallel and vertical. Mounting screws are not provided. The type and size of screw required are project specific and will vary depending upon the mounting surface.



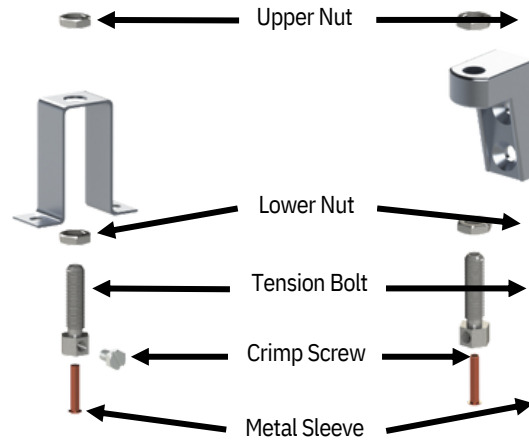


Oasis® Outdoor Shades Installation Instructions

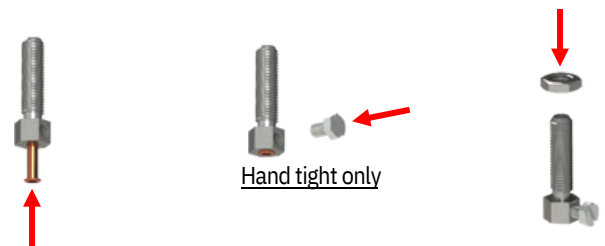
4.21 Tension Bolt Assembly

Locate the cable guide tensioning hardware bag included in your shipment.

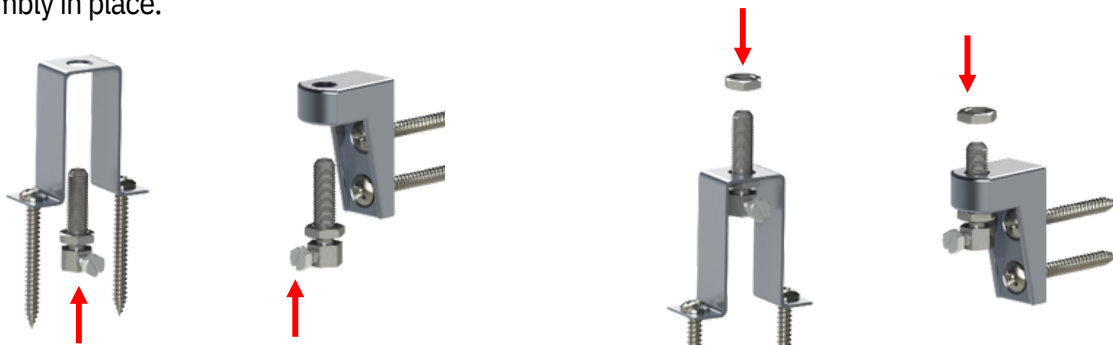
Remove the metal sleeve and place it through the hole on the head of the tension bolt and hand tighten the crimping screw to hold the metal sleeve in place. Do not overtighten the screw, it should only be tight enough to keep the metal sleeve from falling out of place.



Place the lower nut on the tension bolt. Be sure it remains threaded on the lower part of the bolt.



Insert the tension bolt assembly into the mounted bracket, so the crimping screw is accessible. Screw on the upper nut to hold the assembly in place.



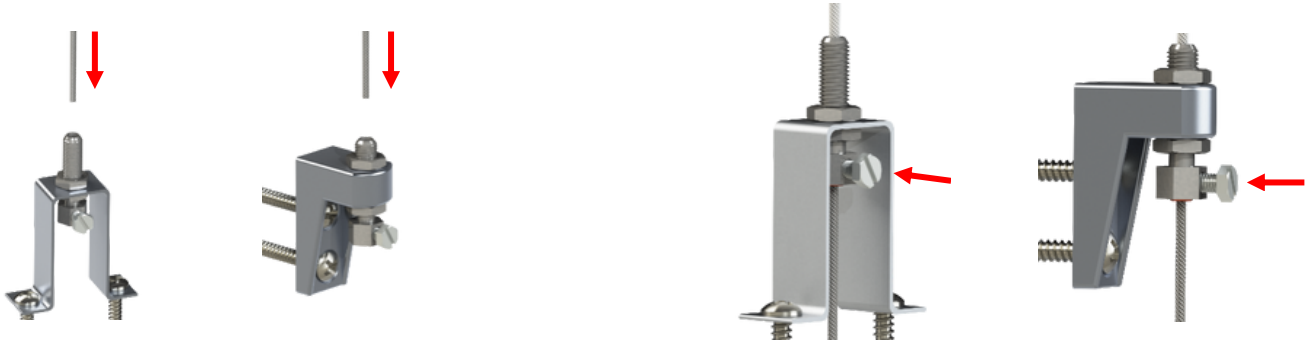
Remove the cable sheathing about 1/2" below the top threads of the tension bolt using a pair of 12-gauge wire strippers. Be careful when removing the sheathing. Avoid twisting the un-sheathed cable to prevent it from fraying.





Oasis® Outdoor Shades Installation Instructions

Feed the cable through the top of the tension bolt. Pull the cable taut and tighten the crimping screw using a flat head screwdriver or a 5/16" socket. To avoid damaging the head of the screw, do not over tighten. The cable is now set.



4.22 Adjusting Cable Tension

To adjust the cable tension, loosen the upper nut using a 1/2" wrench. Once the upper nut is loose, begin tightening the lower nut so it pulls the tension bolt down through the bracket.

As the tension bolt gets pulled through the bracket, the cable will become taut. Check the cable tension while adjusting to ensure it does not become too tight. Once the desired tension is reached, tighten the upper nut back down to hold everything in place. Cut the excess cable using sharp cable cutters, Insolroll recommends leaving at least 1-inch of cable to allow for future tension adjustments.



5.0 Shade Operation

To set the lower limit, start by cranking the shade down to the desired down position.

Compress the shade against the idler side and completely remove the square crank drive pin from the gear.

While the pin is out of the gear, continue cranking the gear in the downward direction until you cannot crank any further.

Re-insert the square crank drive pin into the gear. The shade should now be at its desired lowest position and the crank should not crank down any further. The down limit is now set.

Note: There is no upper limit on manual crank operators. Avoid over-rolling the shade at its upper position.



Oasis® Outdoor Shades Installation Instructions

6.0 Fabric Telescope Adjustment

Fabric telescoping is excessive horizontal movement of fabric while shade rolls up on the tube. Shades are tested and fabric telescoping is adjusted prior to shipment, but additional adjustments may be required depending on each specific application.

If fabric adjustments are required, roll the shade all the way down so the tube is exposed. Refer to section 5.0 Shade Operation for limit adjustments.

Place a piece of duct tape, 2"-4" in length, near the edge of the tube on the side opposite of the direction the fabric is moving.

Run the shade up and down a few times. If the shade still telescopes, repeat the process. The correct amount of tape can only be determined by trial and error. Re-set the lower limit after completing shade adjustments.