

CLEANING INSTRUCTIONS

Honeycomb shades are made of an anti-static, dust resistant fabric which repels dirt and dust. For most of these fabrics, the following options are available if your shade needs cleaning.

DUSTING: Regular light dusting with a feather duster is all the cleaning that is needed in most circumstances.

VACUUMING: Use a hand-held vacuum with low suction for more thorough dust removal.

SPOT CLEANING: Use the following steps for spot cleaning: (1) Prepare a solution of warm water and mild dishwashing detergent. (2) Dampen a clean cloth in the solution and ring it out. (3) Dab the spot with the dampened cloth until it is gone. **DO NOT RUB THE FABRIC.** (4) Allow the shade to dry in the completely lowered position.

CAUTION: Avoid creasing Blackout fabrics during cleaning.

ULTRASONIC CLEANING: Standard shades, except those made with Blackout Lining can be ultrasonically cleaned by a professional.

- Specify that a mild detergent be used.
- Never immerse the headrail in the solution.
- Dry the shade completely in the lowered position.

CAUTION: Do not ultrasonically clean Blackout fabrics. Do not immerse headrail.



WARNING

CHILD SAFETY



Inner or exposed cords can pull out to form a loop, which can STRANGLE a young child.

- Children can climb furniture to access inner or exposed cords. Move cribs, playpens, and other furniture away from window coverings.
- Always keep cords out of the reach of children.



CANADIAN RESIDENTS ONLY:

For more safety information call 1-866-662-0666 or go to www.healthcanada.gc.ca/blindcords



INSTALLATION INSTRUCTIONS

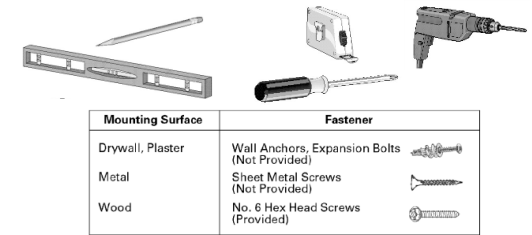
HONEYCOMB SHADES

CORDLESS LIFT SYSTEM

Thank you for your purchase. This shade has been custom built for you from the highest quality materials. To avoid errors and save valuable time, please read these instructions before installing your new shade.

TOOLS YOU WILL NEED

1. Pencil or Marker
2. Measuring Tape
3. Phillips Screwdriver
4. Carpenter's Level
5. Power Drill
6. Mounting Fasteners

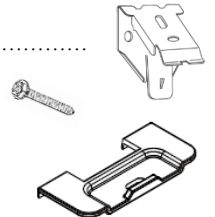


GETTING STARTED

All the required installation components are wrapped in your package along with these instructions. Check that the parts you have correspond to the parts shown below.

PARTS

- Installation Brackets
- Screws
- Handle(s)



MOUNTING THE BRACKETS

The installation brackets may be used for **INSIDE** or **OUTSIDE** mounts.

Mounting the brackets level is essential for proper operation of the shade. Shim the brackets if necessary to achieve a level alignment.

The bracket requirements and placements are the same for inside and outside mounts. Refer to the following spacing diagram and bracket requirement chart.

Installation Bracket Requirement Chart

Shade Width	Brackets Required
up to 38"	2
38-1/8" to 72"	3
Over 72-1/8"	4

INSIDE MOUNTS:

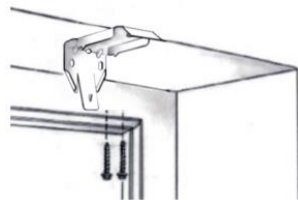
For inside mounts the installation brackets will be screwed in place through the top two holes of each bracket. Refer to the mounting depth chart below.

Minimum Depth	Fully Recessed
3/4"	2-1/8"

Note: Prior to mounting the brackets, add any clearance depth required to avoid obstructions such as window cranks or handles.

ATTACH THE BRACKETS:

- Screw installation brackets through top two holes to desired window sill location.
- Ensure all brackets are level and aligned.



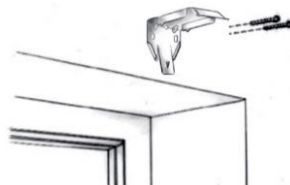
OUTSIDE MOUNTS:

For outside mounts the standard installation brackets will be screwed in place through the two back holes of each bracket. Refer to the minimum surface height chart below.

Minimum Height
1-1/2"

ATTACH THE BRACKETS:

- Screw standard brackets through two back holes to desired location.
- Ensure all brackets are level and aligned.

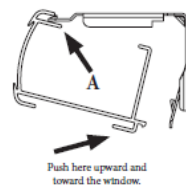


Note: Use the same holes for all brackets to ensure even projection from the surface.

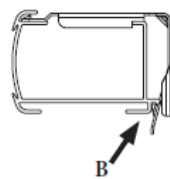
INSTALLING THE SHADE

MOUNT THE HEADRAIL:

- With the front side of the shade facing you...
- Tilt the headrail slightly backward to angle the front inside lip to the brackets. (A)
- Push the headrail back and upward to snap in it into place (B).



Push here upward and toward the window.

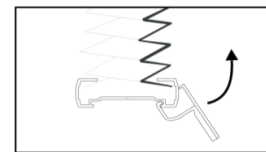


Make sure that no fabric is pinched between the brackets and the headrail.

INSTALLING THE HANDLE

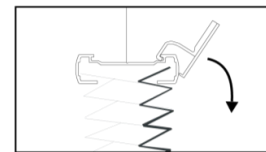
Carefully determine the placement of the handles. For shades 48" wide or under the handle should be placed at the center of the rail. For shades over 48" wide, two handles should be evenly spaced on the rail, as far apart as is comfortable to operate.

Gently lift the shade fabric out of the way. Hook the handle on the underside of the bottom rail and swing up as shown, until the top of the handle snaps securely in place,



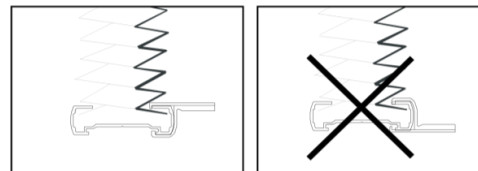
Bottom Rail

If the shade is a top down - bottom up, repeat the process for the handle on the middle rail.



Middle Rail

The handle will sit approximately 1/2" above the window sill when the shade is fully lowered. This allows easy access for grasping the handle when raising the shade.



OPERATING THE SHADE

TO RAISE AND LOWER THE SHADE:

- Hold the handle in the center portion of the bottomrail to ensure level movement.
- Wider shades may have 2 handles evenly positioned within hands reach along the center portion of the bottomrail to ensure level movement.
- Lower the shade by gently pulling downward to the desired position.
- Raise the shade by gently pushing upward to the desired position.

ADJUSTING THE SHADE

- Raise and lower the shade several times.
- If the bottom or intermediate (on Top-Down/Bottom-Up) rail is not level, use the following steps to correct.

BOTTOM RAIL SHADE ADJUSTMENT:

- Holding the bottomrail with two hands, gently pull down on the side that is too high. Stop when the bottomrail is level.

INTERMEDIATE RAIL SHADE ADJUSTMENT:

- Holding the intermediate rail with two hands, gently push down on the side that is too high. Stop when the intermediate rail is level.

TROUBLESHOOTING

THE SHADE WILL NOT SNAP INTO THE INSTALLATION BRACKETS.

- Check that the installation brackets are aligned and level.

THE SHADE IS HARD TO RAISE OR LOWER, OR WILL NOT RAISE OR LOWER.

- Shades cannot be forced into tight inside mount window openings. If an inside mount, check that the shade is installed correctly. Make sure there is clearance between the ends of the shade and the window casement.
- Check that the installation brackets are level. Shim to level, if necessary.
- If hold-down brackets are used, make sure they have been released.
- Make sure the fabric is not caught.

THE SHADE RAISES OR LOWERS UNEVENLY OR THE BOTTOM RAIL IS UNEVEN.

- Check that the window is square by measuring the diagonals.
- Check that the installation brackets are level. Shim to level, if necessary.
- Adjust the cords under the bottom rail (see "Adjusting The Shade" above).

IMPORTANT INFORMATION REGARDING CORDLESS SHADE OPERATION.

- Daily operation of shade will ensure that it performs at its optimal level.
- If the shade is in the lowered position for an extended period of time, extra care needs to be taken when raising the shade. The fabric will relax and may resist lifting. This is a natural occurrence with all fabric shades. When lifting, you may notice the billowing (falling out) toward you. This is temporary and can be corrected by slowly raising the shade completely and then operating several times. This allows the fabric to go back to its pleated state, and the shade will operate as designed.
- If shade has been in the fully raised position for an extended period of time, it may have a tendency to "spring back" above the desired length of the shade. This is temporary and can be corrected by completely raising the shade and operating several times.
- Operating the shade with the handle(s) provided is recommended so that the shade is balanced when raising and lowering.

 **SelectBlinds®**