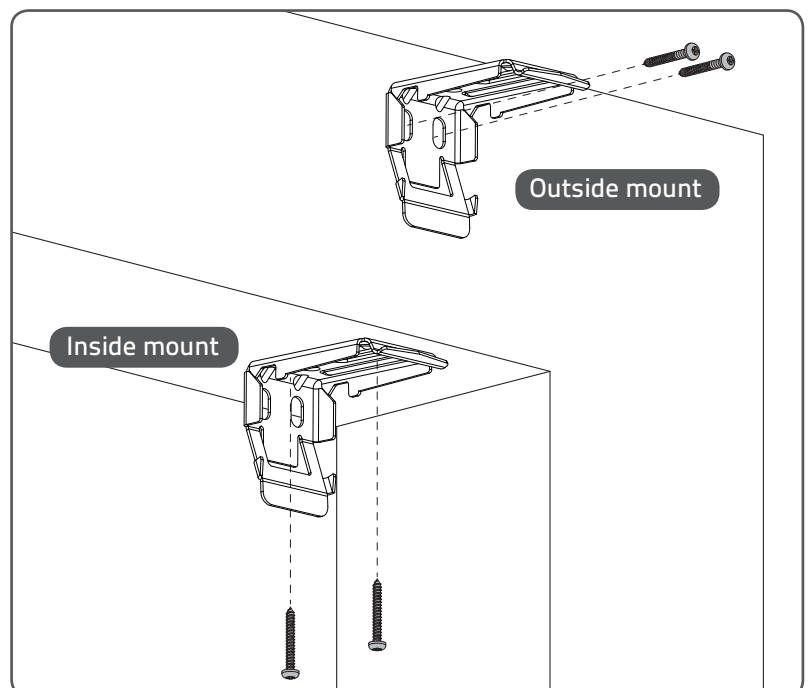
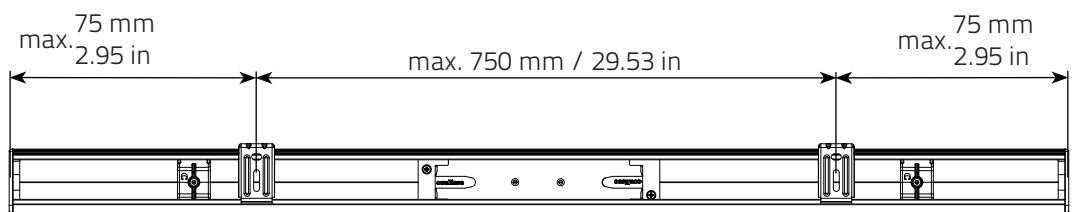
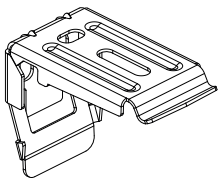
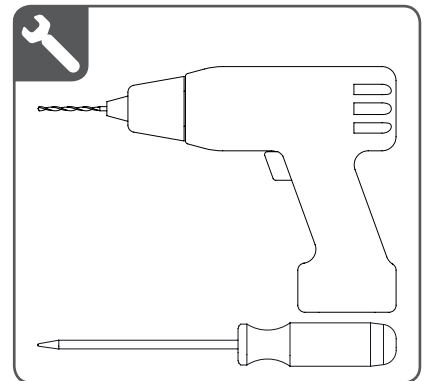
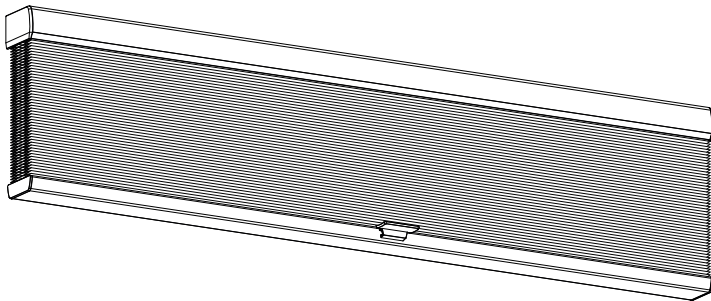
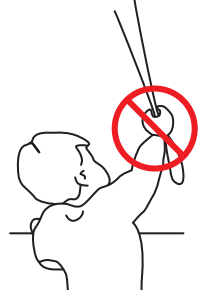


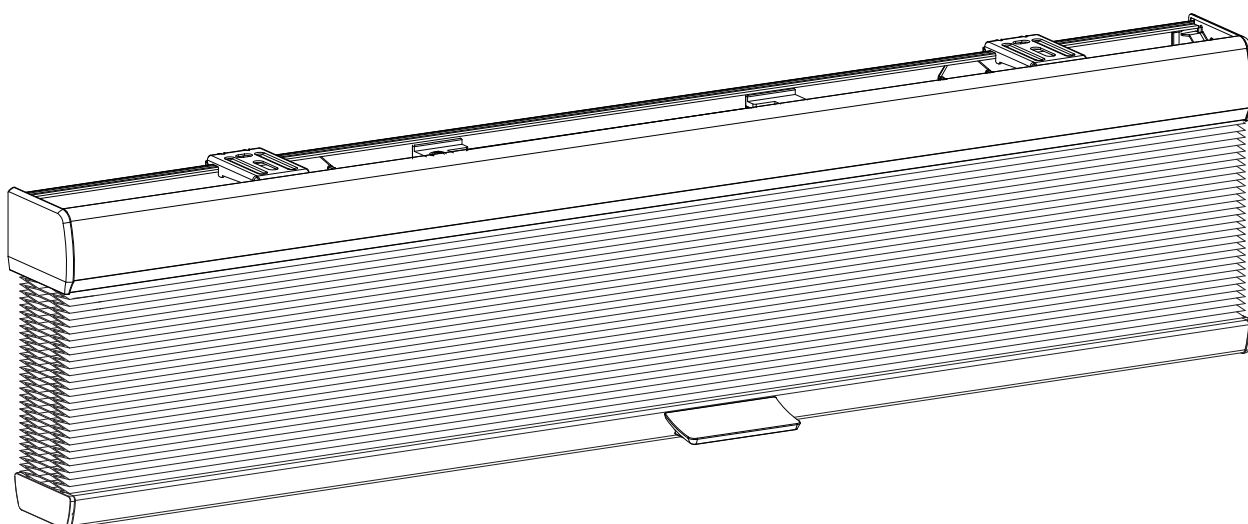
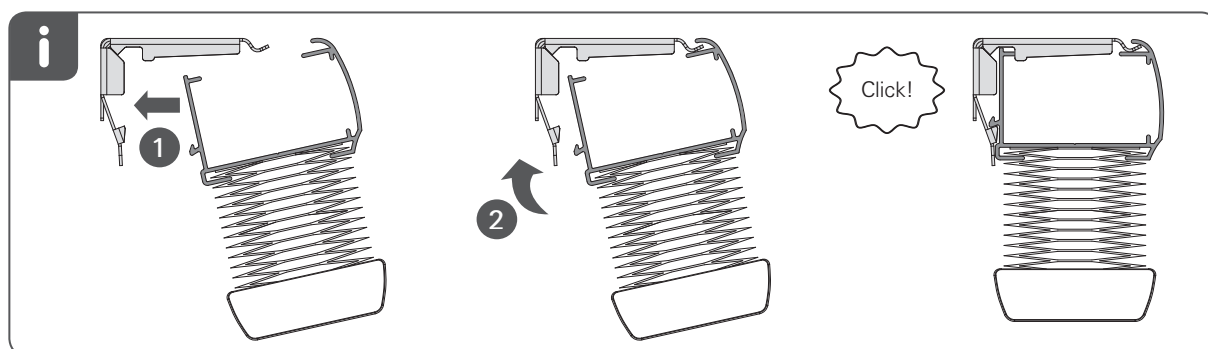
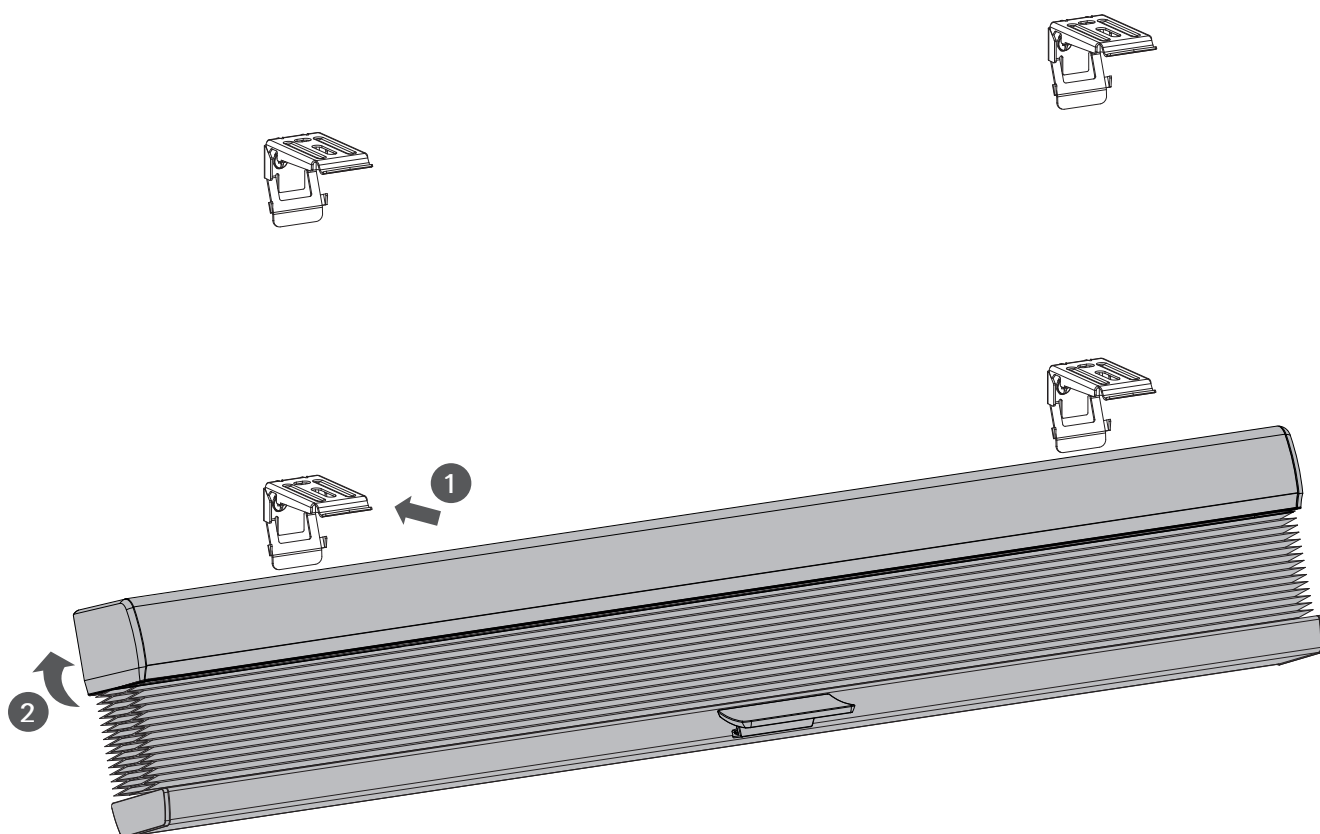
## Installation: Honeycomb Cordless

Read the instructions carefully before assembling and using the product. Assembling process can be completed by non-professionals. For indoor use only.

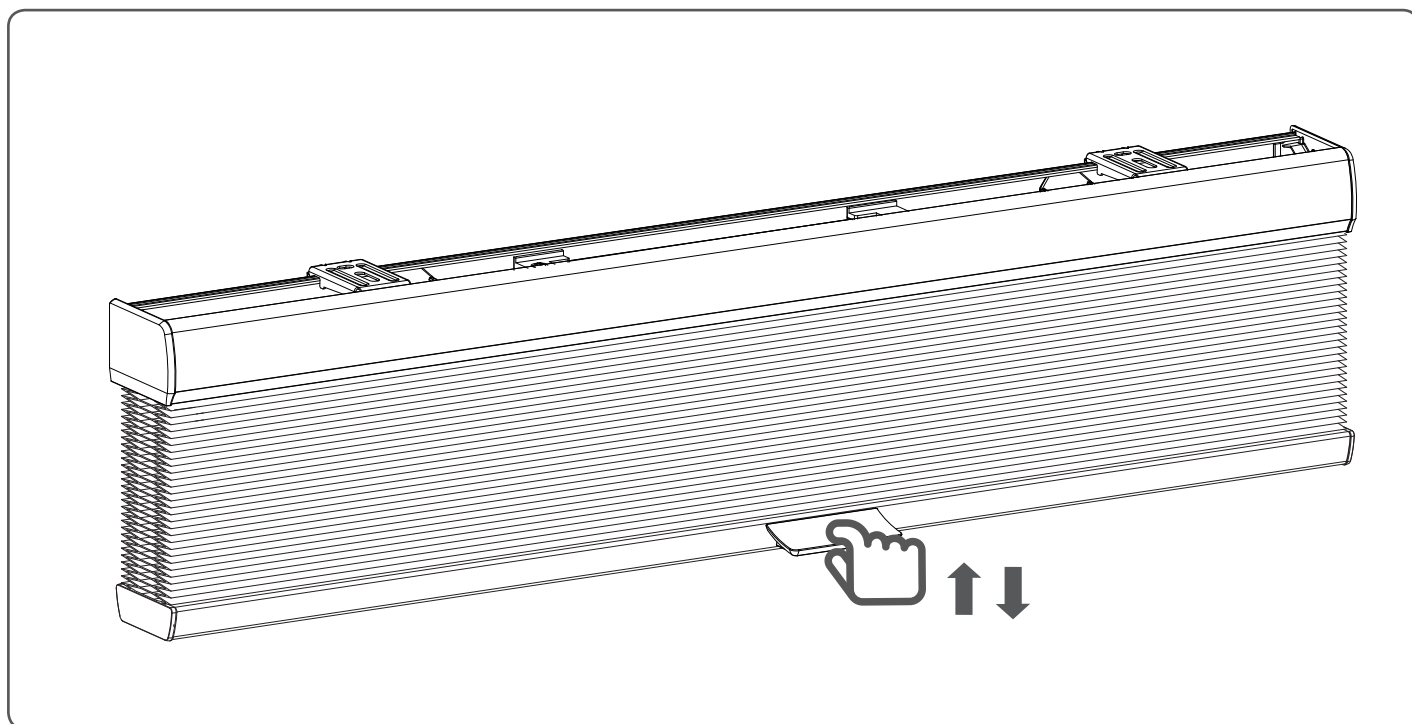
### WARNING

- Young children can strangle in the loop of pull cords, chains and tapes, and cords that operate window coverings.
- To avoid strangulation and entanglement, keep cords out of the reach of young children. Cords may become wrapped around a child's neck
- Move beds, cots and furniture away from window covering cords.
- Do not tie cords together.  
Make sure cords do not twist together and form a loop.

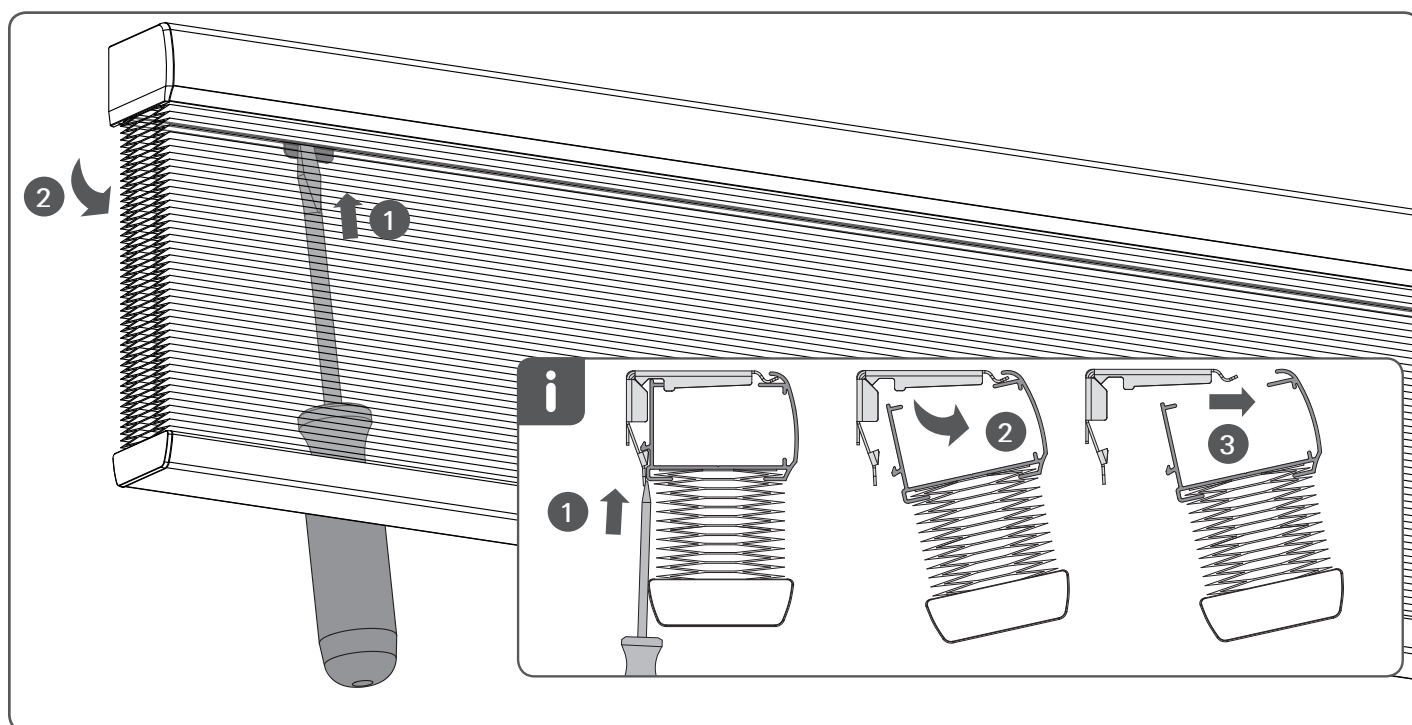


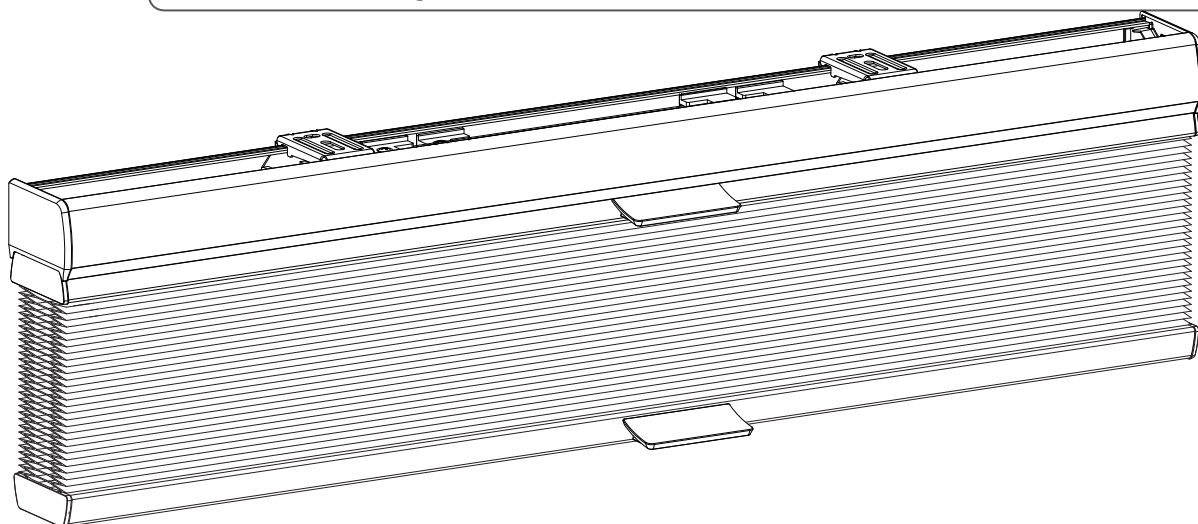
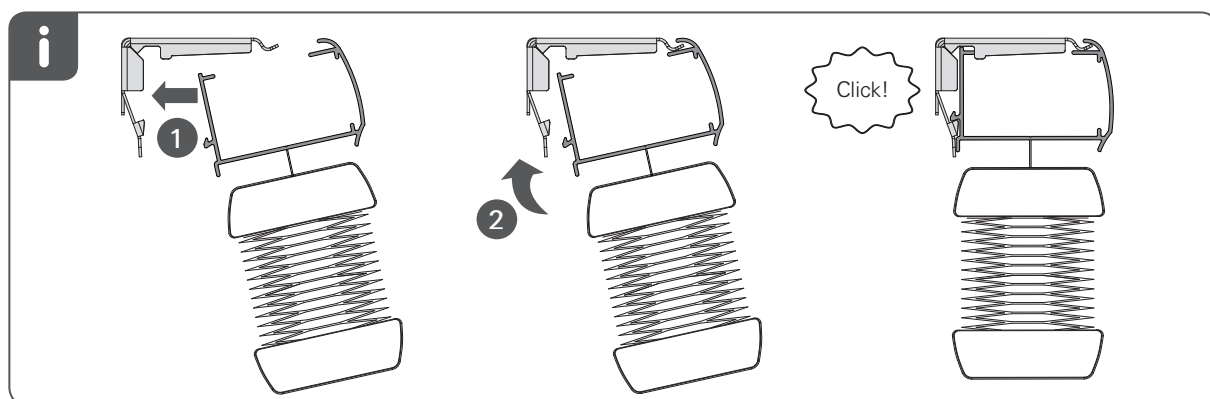
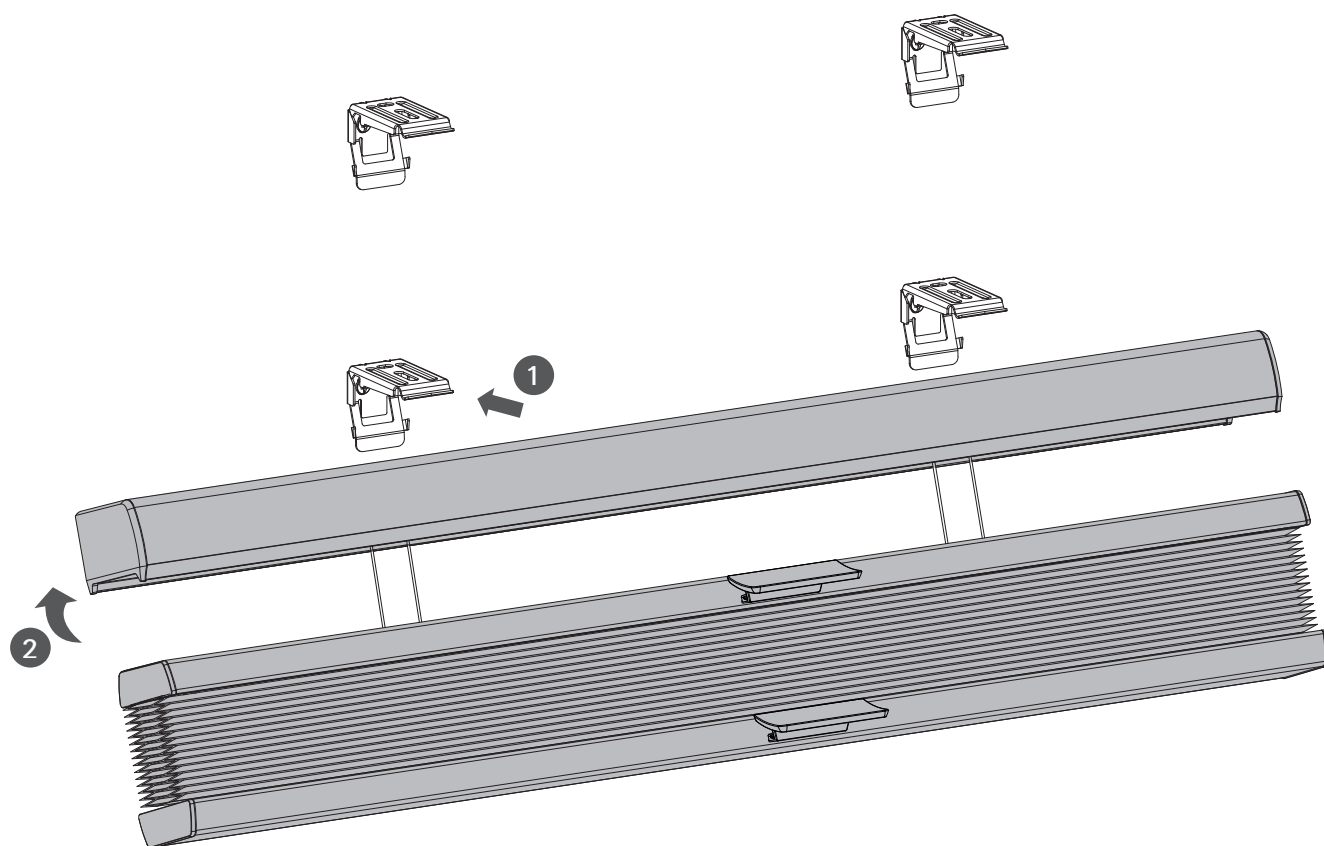


## Operate

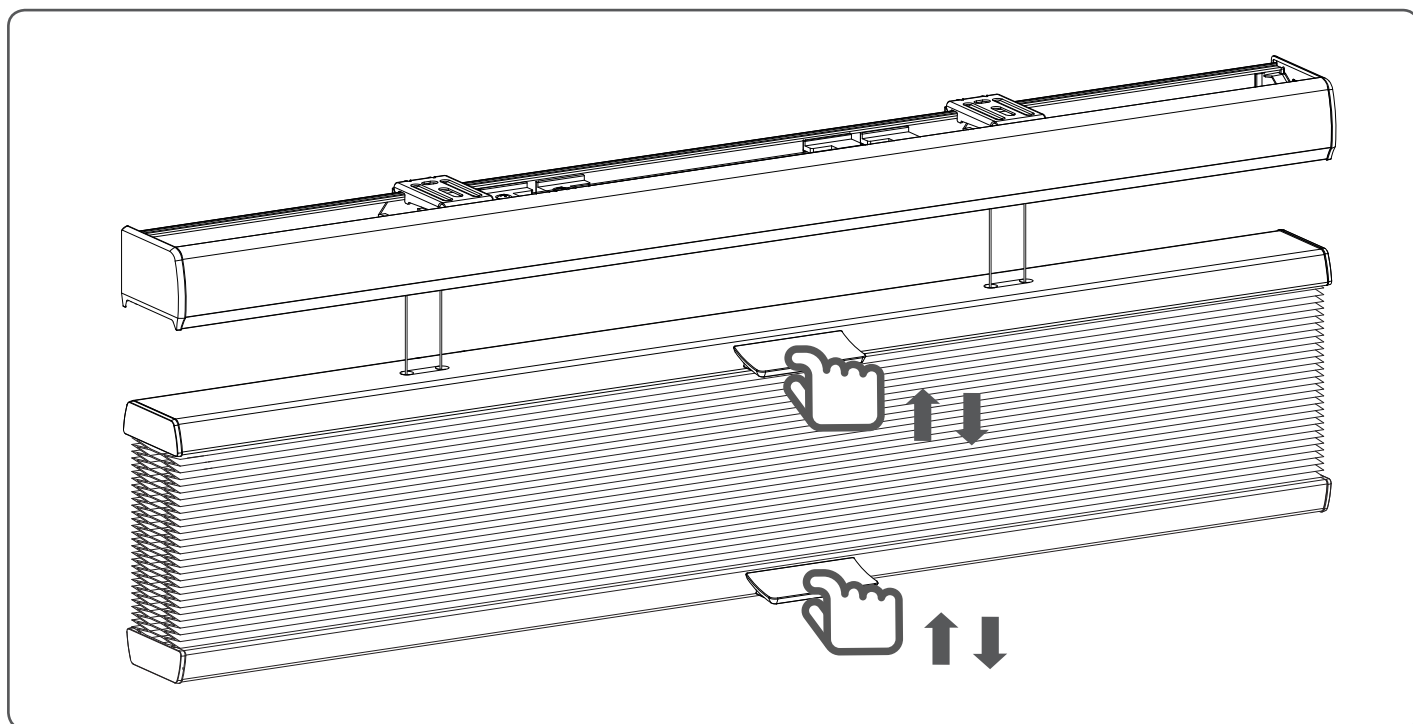


## Removal

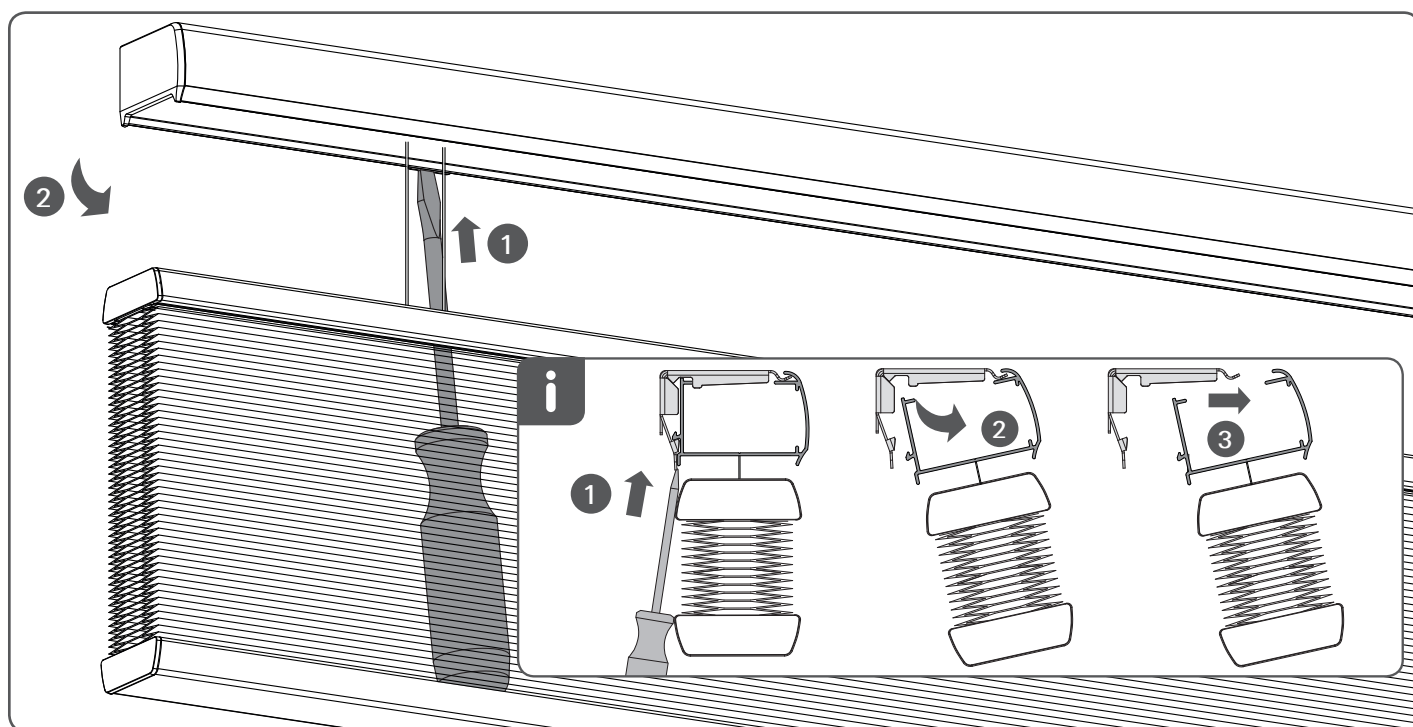


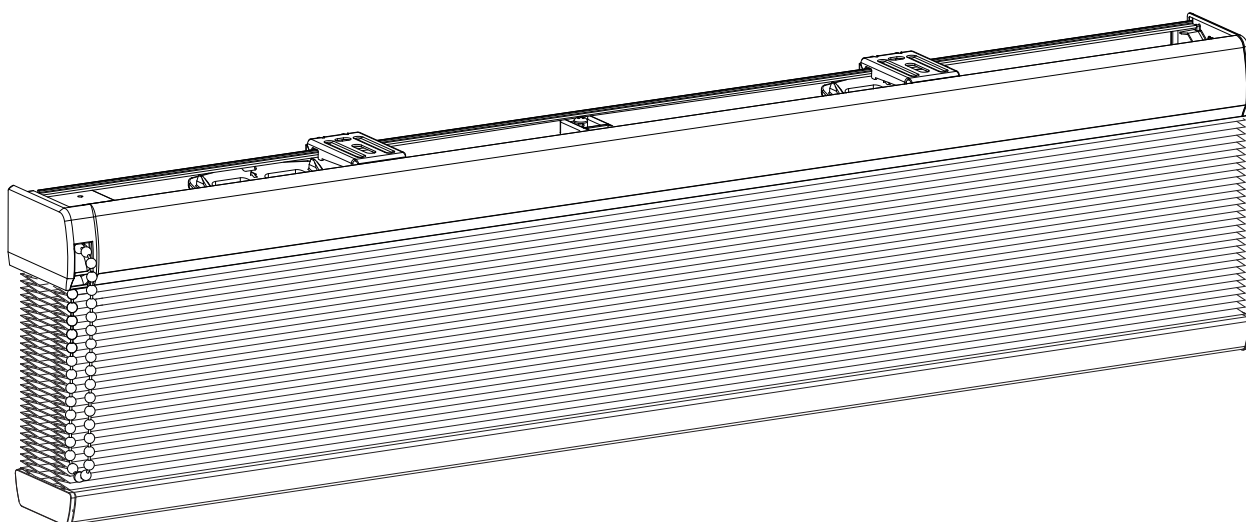
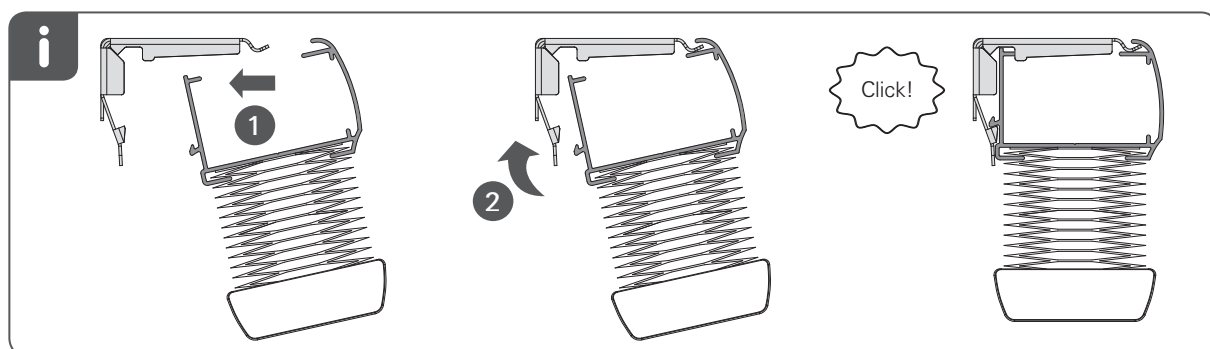
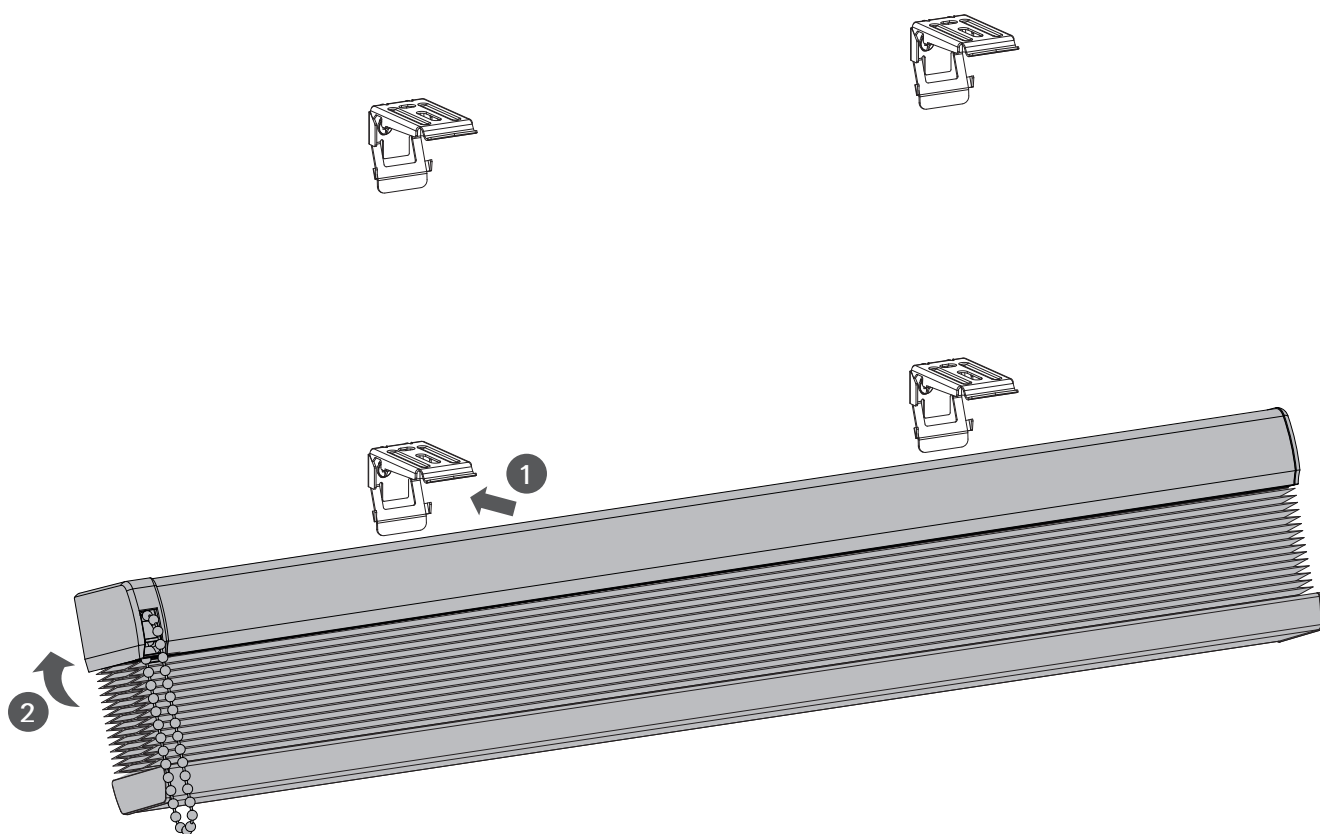


## Operate

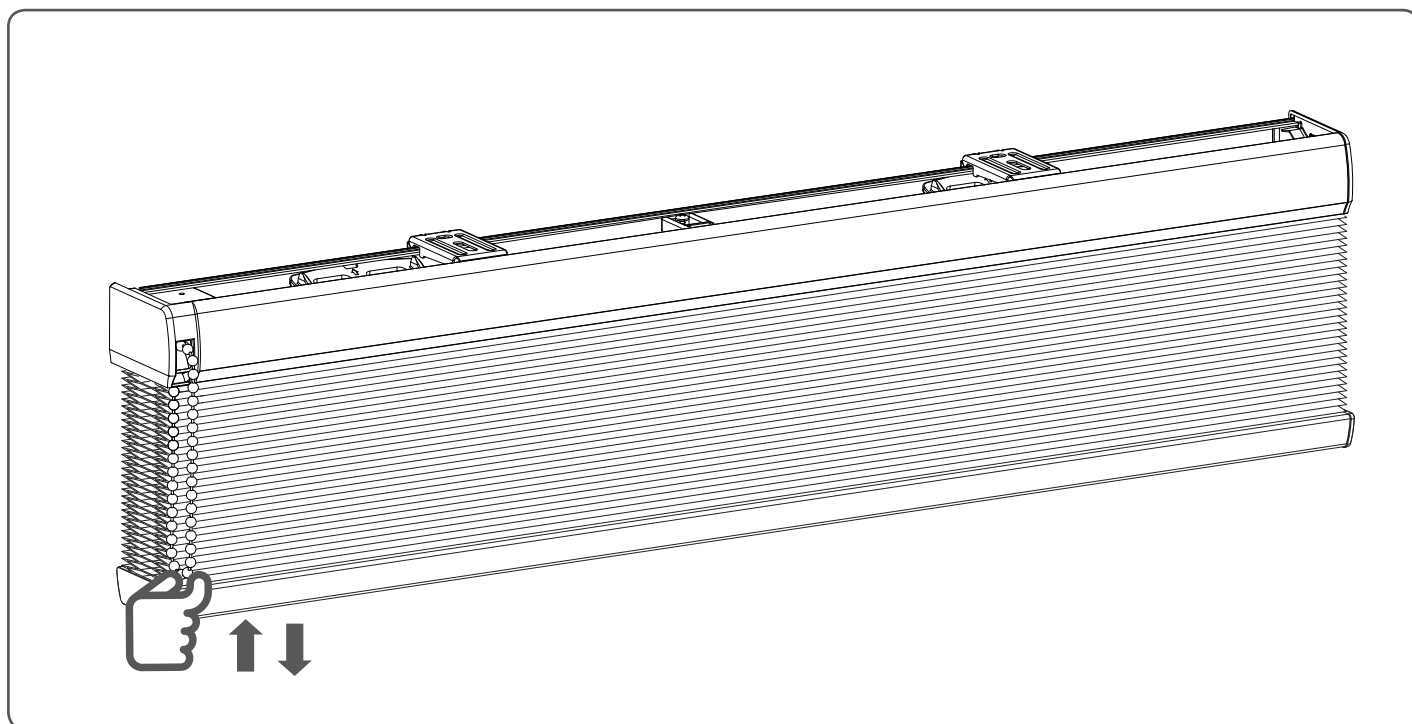


## Removal

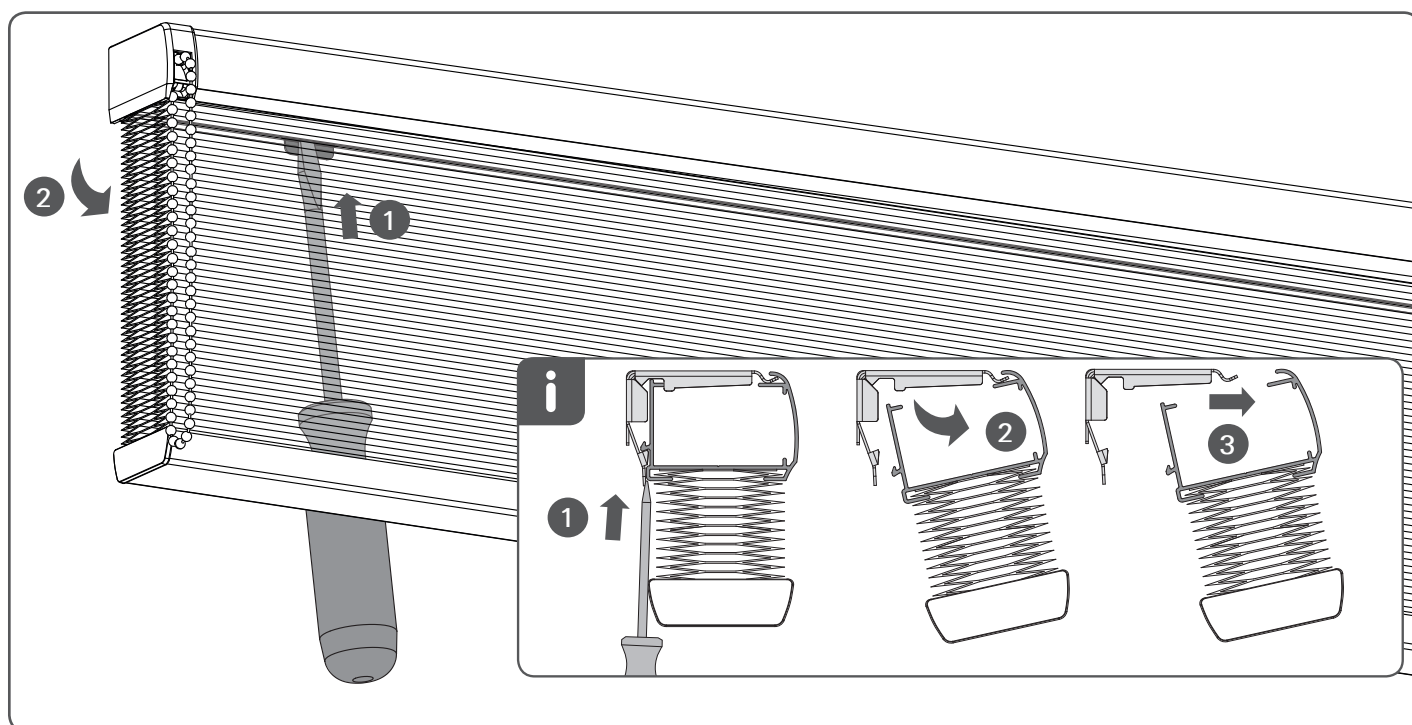




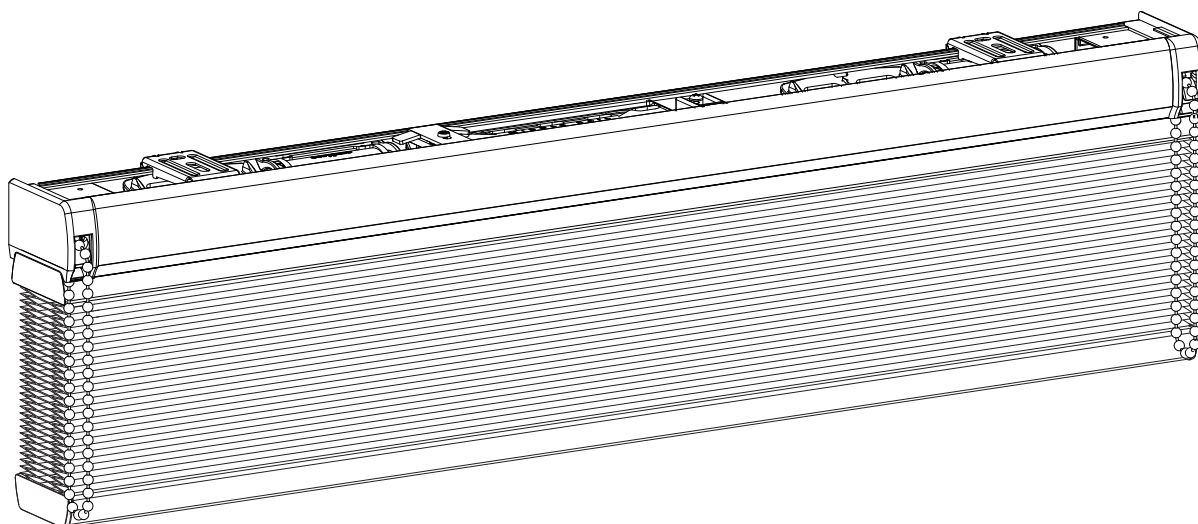
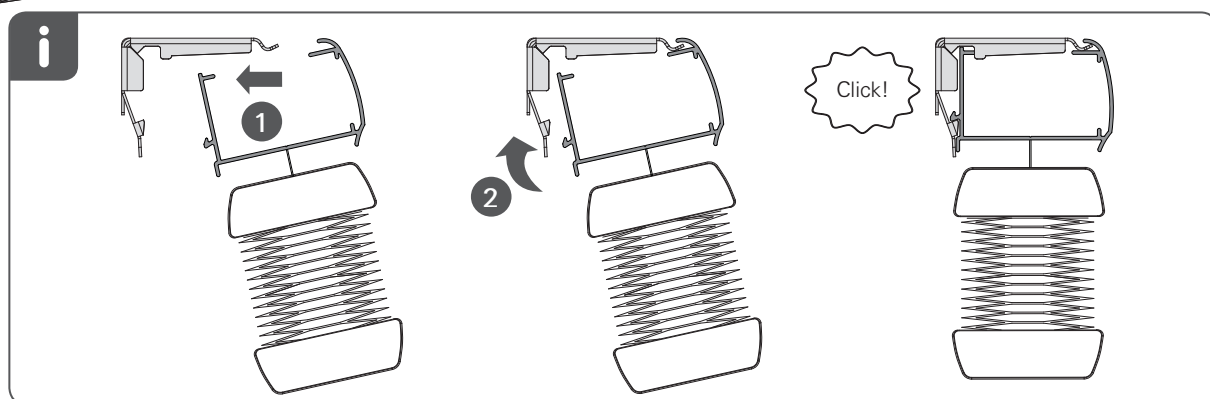
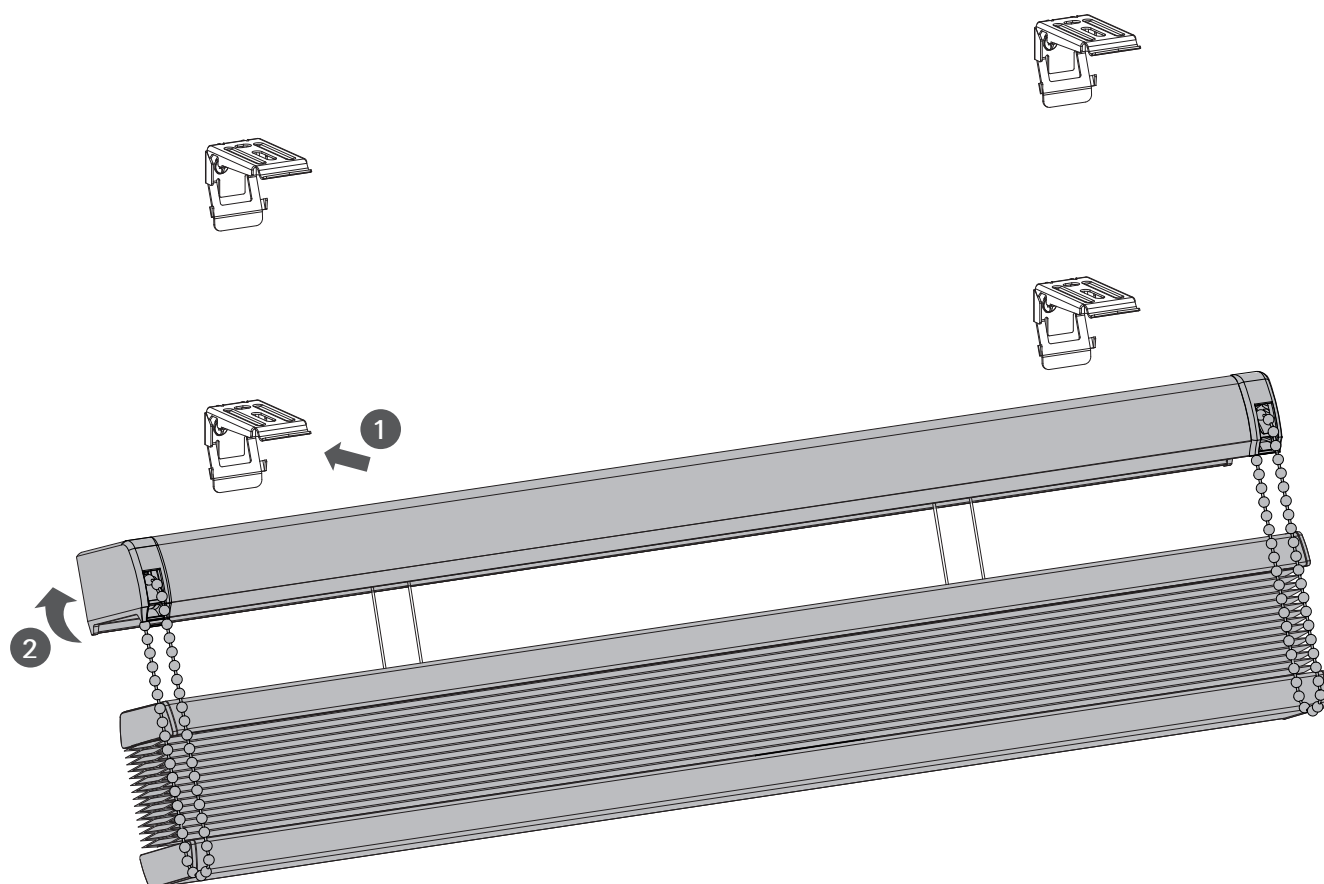
## Operate



## Removal

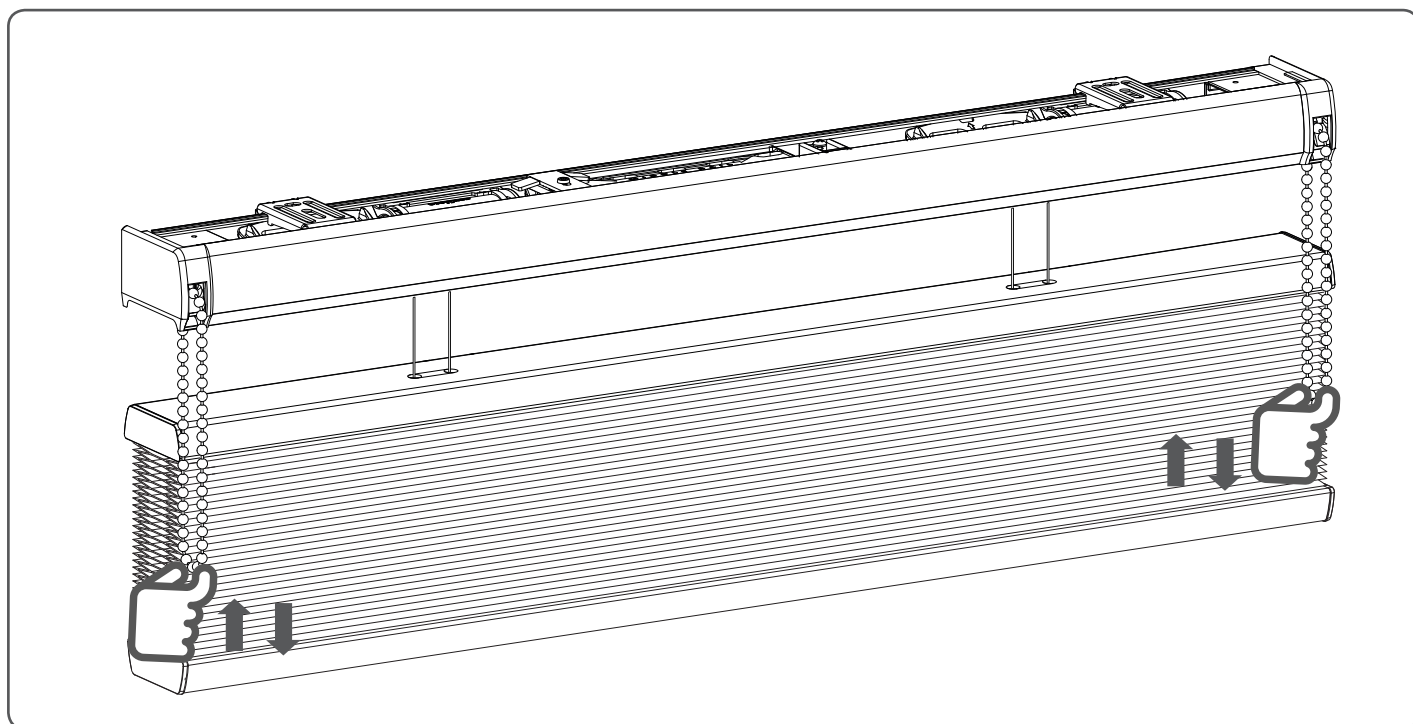




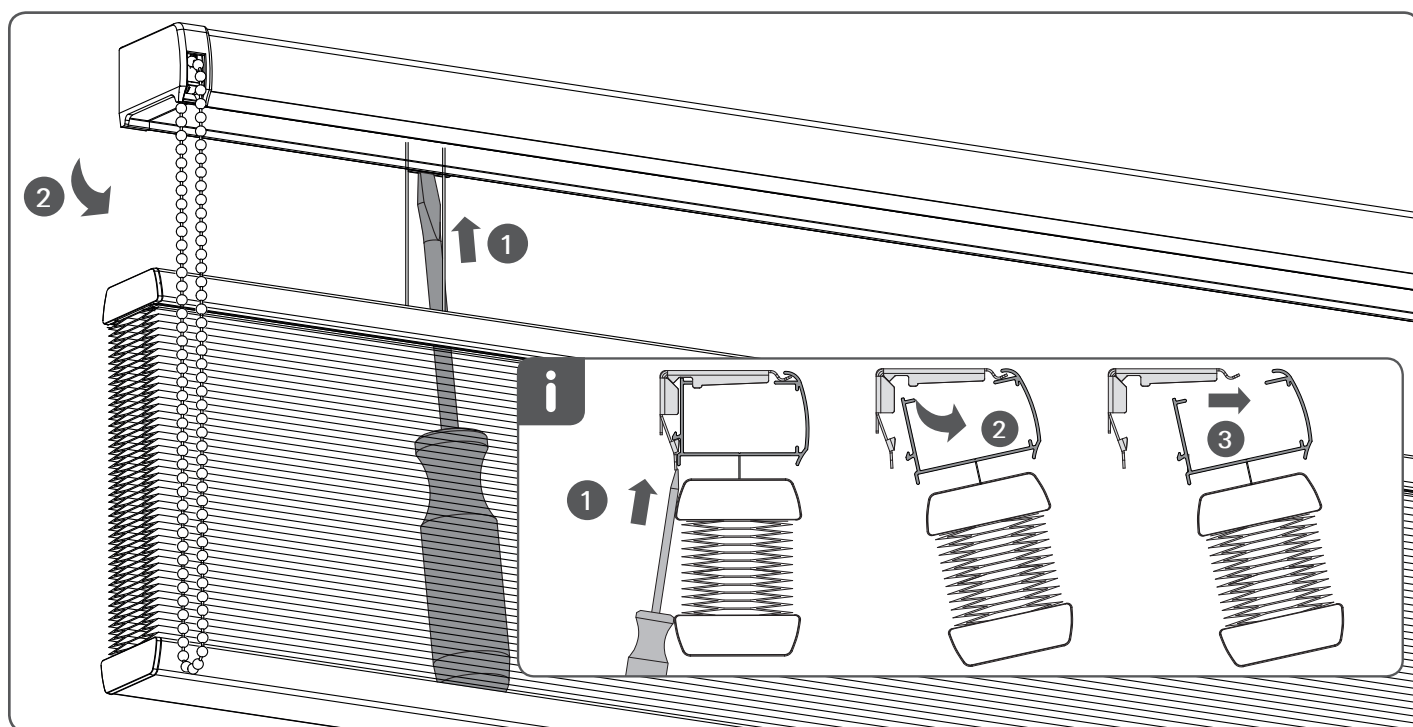




## Operate



## Removal



# WARNING

The safety device must be applied on chain loops and prevents free-hanging loops in operating chains.  
Install the safety device at the maximum distance possible from the control mechanism to prevent slack in the loop.

