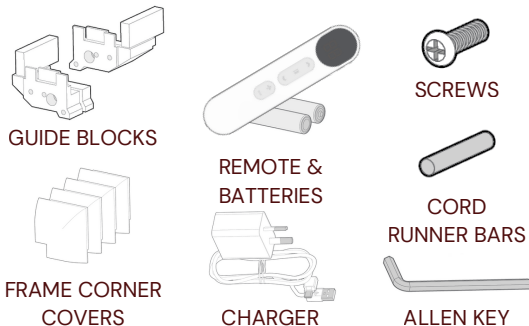


# SelectBlinds

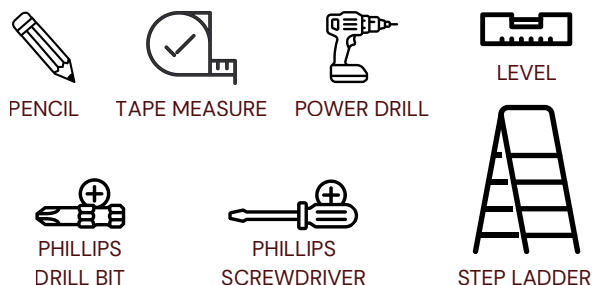
## Installation Guide:

### No-Drill Motorized Skylight

#### HARDWARE AND PARTS INCLUDED

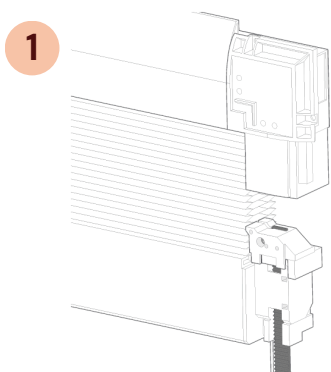


#### TOOLS REQUIRED

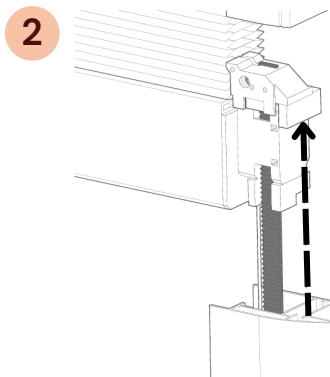


#### LEVEL 2 INSTALLATION

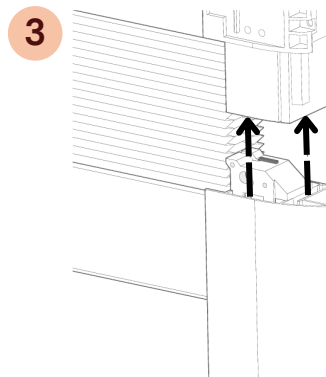
### Installing Side Tracks



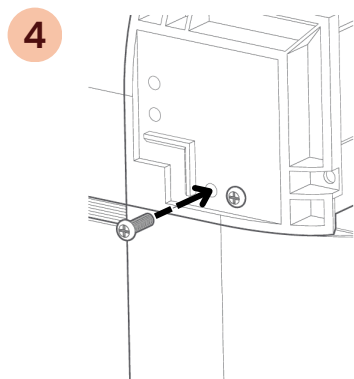
1  
Extend the bottom rail down slightly to move the guide blocks out of the headrail channel.



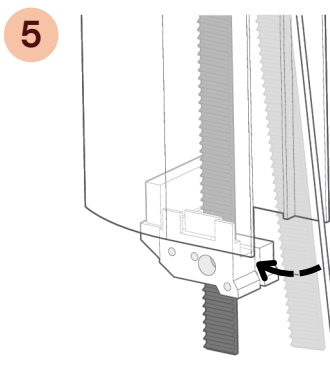
2  
Slot the side frames over the guide belts and up onto the headrail's channels.



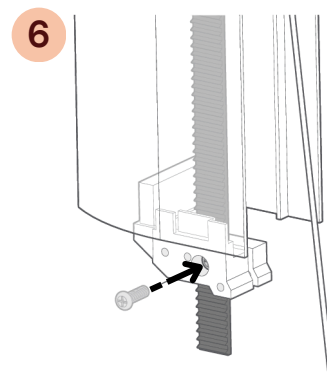
3  
Ensure the side frames are slotted onto the guide blocks and seat them flush.



4  
Install the screws onto the corners to secure the side rails to the headrail.

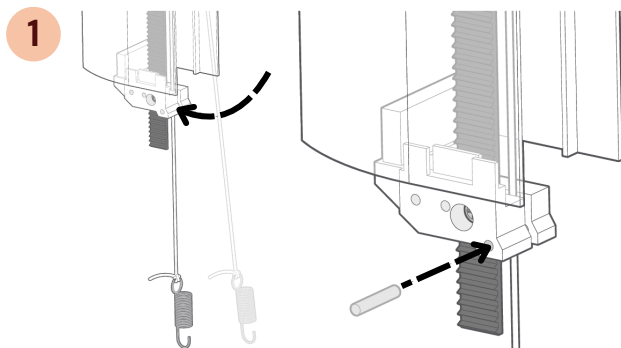


5  
Slide the guide belt into the end guide block, making sure it is taut.

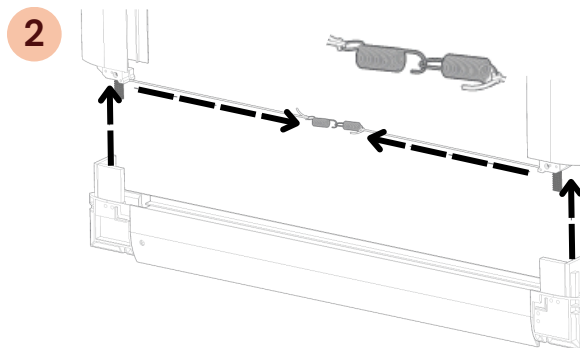


6  
Install a screw to secure the belt into the end guide block.

## Setting the Tension

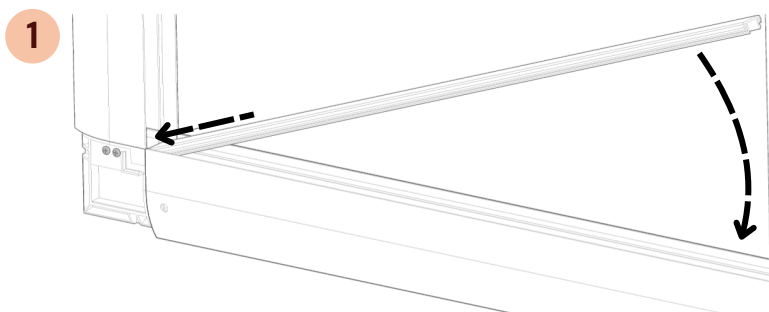


Slip the cord into the channel on the end guide block at the bottom and insert the cord runner bars for each side.

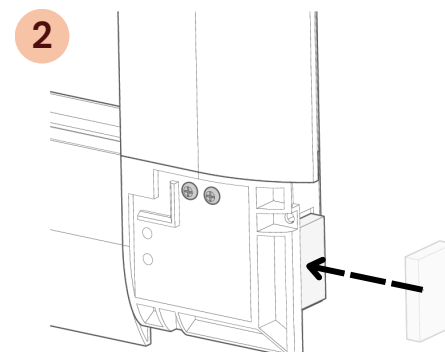


Connect the tension cord hooks. Then insert the bottom frame into the side frames and screw in the corner pieces where they meet.

## Securing the Bottom Frame



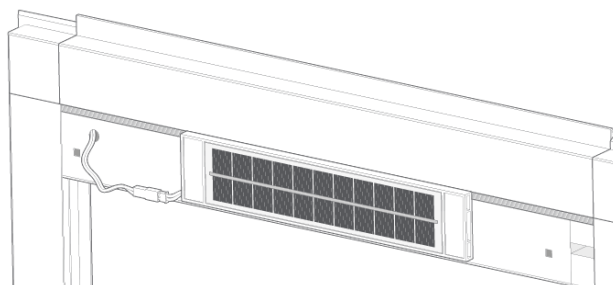
Attach the final cover plate over the tension cords on the bottom frame piece. This should click in place.



Peel off the adhesive cover and stick the corner pads onto the right side of the top and bottom corner pieces.

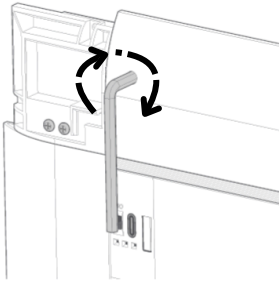
### Quick pointers

If you are using a solar charger, it can be attached to the back of the movable rail. Make sure it is off set from the bottom of the rail by 1/4" for smooth operation. This will be easier to attach before installing the shade into the window opening.



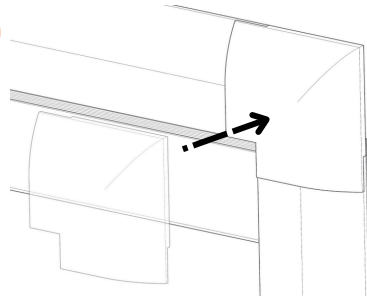
## Installing the Skylight

1



Insert the shade frame into the window opening and then use the Allen Key on the left side of the top and bottom frame pieces to tighten the tension of the Twist2Fit rails.

2



Attach a corner plate over each corner piece of the frame.

### Quick pointers

Before attempting programming on the next page, make sure the shade has been fully charged. These shades will arrive 30% charged and need to be attached charged to turn on the motor.

## CLEANING INSTRUCTIONS

1

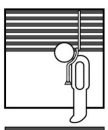
For regular maintenance, use a duster or a vacuum with a brush attachment and run it over the front and back of the shade.

2

To spot clean stains, use a damp rag with a very mild, gentle detergent or soap. Dab at the affected spots; DO NOT RUB! Let the dampened area air dry and repeat as necessary.



## CHILD SAFETY WARNING

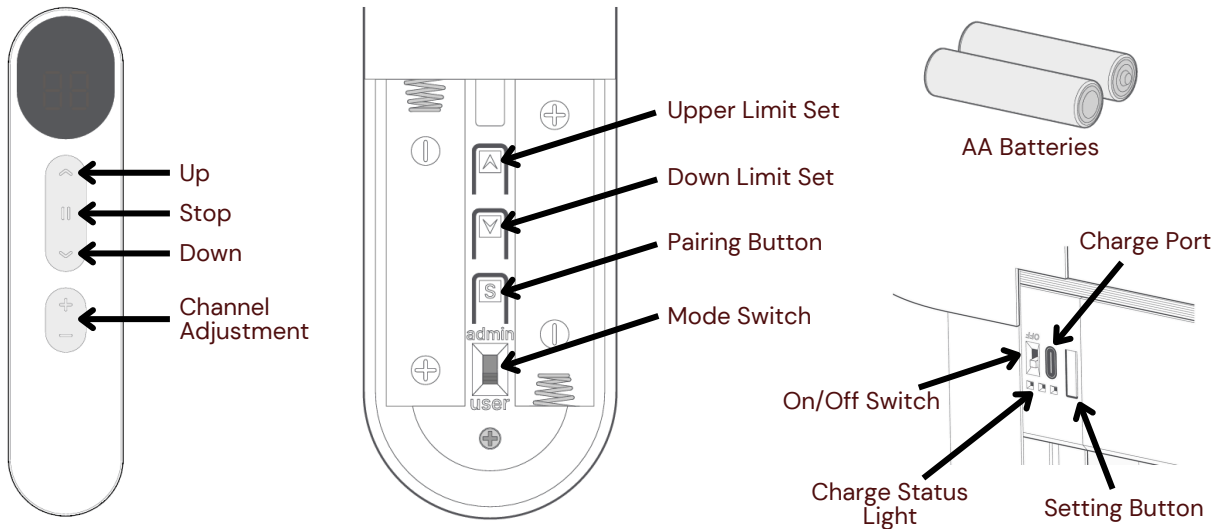


Corded window blinds and shades can be a strangulation risk or cause serious injury to young children and pets. When using corded window treatments, use the following tips to keep them safe:

- NEVER place a crib by a window!
- Move furniture that children can climb on away from the window.
- Secure child-safe tensioners for continuous cord loop chains to the wall or window encasement.
- Always use cord cleats with corded products.
- Keep cords up and away from your child's reach.

# MOTORIZATION INSTRUCTIONS

## The Remote



## Pairing the Remote

**1** Insert the batteries into the remote. Then switch the motor on.

**2** Flip the mode switch on the back of the remote to 'admin' mode.

**3** Make sure the remote is set to the desired channel.

**4** Press and hold the settings button on the shade. It will jog to notify it's in setting mode.

**5** Immediately press and hold the setting button on the remote. The shade will jog confirmation of pairing.

**6** Flip the switch on the back from 'admin' mode to 'user' mode.

