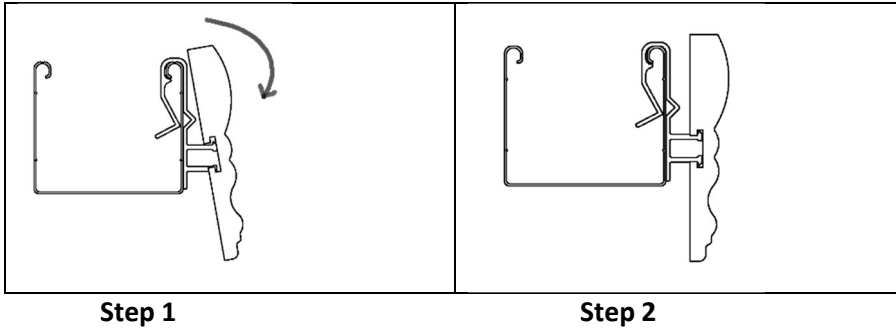


VALANCE INSTALLATION

Attach at both ends, the clear plastic Valance Clips to the front of the headrail. Spread evenly any remaining clips

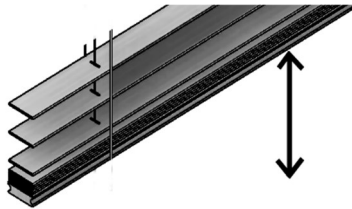


[1] Insert the Valance on the top arm of the Valance Clip as shown and press down.

[2] Rotate the Valance and push against the headrail to engage the bottom arm of the Valance Clip. The two parts should snap together.

Cordless Faux Wood Blinds

BLIND OPERATION



To raise or lower the blind, gently hold the center of the Bottom Rail and either push up to lift or pull down to lower the blind

Installation Instructions

ALIGNMENT

After installing the blind, tilt the slats to the open position, then raise and lower the blind several times. This motion allows the cords and slats to properly align themselves.

Your blind has an internal system to keep the bottom rail properly leveled all the time. If, for any reason, the blind is not leveled, pull the bottom rail all the way down. This will fix the misalignment.

Installation Overview

To mount your blind, you will need to screw the Mounting Brackets on your window, attach the Valance Clips to the headrail, insert the blind headrail into the brackets and attach the Valance and any other component not attached to the blind.

Before installation, check the headrail for proper width. If your order is for several blinds, be sure to match them with the appropriate window.

Keep the blind stacked as received until you finish the installation.

TOOLS YOU WILL NEED

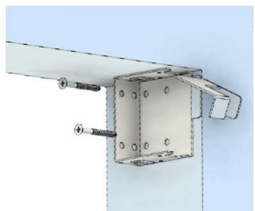
Pencil, Level, Phillips Screwdriver, Power Drill

Bracket Installation

All blinds require two End Brackets to hold a blind. If the blind is 54" or greater in width, one or more Center Support Brackets will be required. Some blinds will require to install Spacer Blocks. Screws and all additional installation parts are included in the Hardware Box.

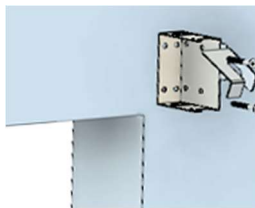
All blinds with 2 ½" Slats or wider, must be installed with Spacer Blocks

INSIDE MOUNT



Open the bracket by applying pressure on the latch. There is one Left bracket and a Right one. Screw into the window frame through the holes on the inside of the bracket as shown. Always use at least two screws per bracket. Screws mounted horizontally will have more strength.

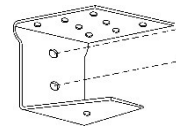
OUTSIDE MOUNT



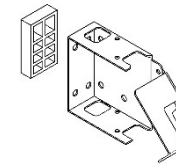
Measure the headrail length and mark with a pencil on the wall the position where the ends of the headrail will be located. Be sure these marks are centered on the window and use the level to determine the vertical position. Now, mark the position of the End Brackets, ¼" outside of the headrail marks. These will be the outside position of the End Brackets. Attach the brackets

against the wall with the provided screws

CENTER SUPPORT BRACKETS



If required, space these brackets evenly alongside the headrail. For Inside Mount, attach to the window frame with screws in the vertical direction; for Outside Mount, be sure they are leveled with the End Brackets and screw them against the wall.

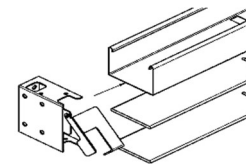


SPACER BLOCKS

These are included on all blinds with slats of 2 ½" or more with the purpose of separating the blind from the glass (Inside Mount) or the wall (Outside Mount). They are installed behind the End Brackets.

Final Assembly

INSERT BLIND IN BRACKETS



With the End Brackets open, insert one end first and then the other. Close the Bracket latch, until the locking tab clicks into place.