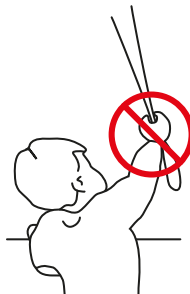


Installation Instructions - Cassette

Read the instructions carefully before assembling and using the product. Assembling process can be completed by non-professionals. For indoor use only.

WARNING

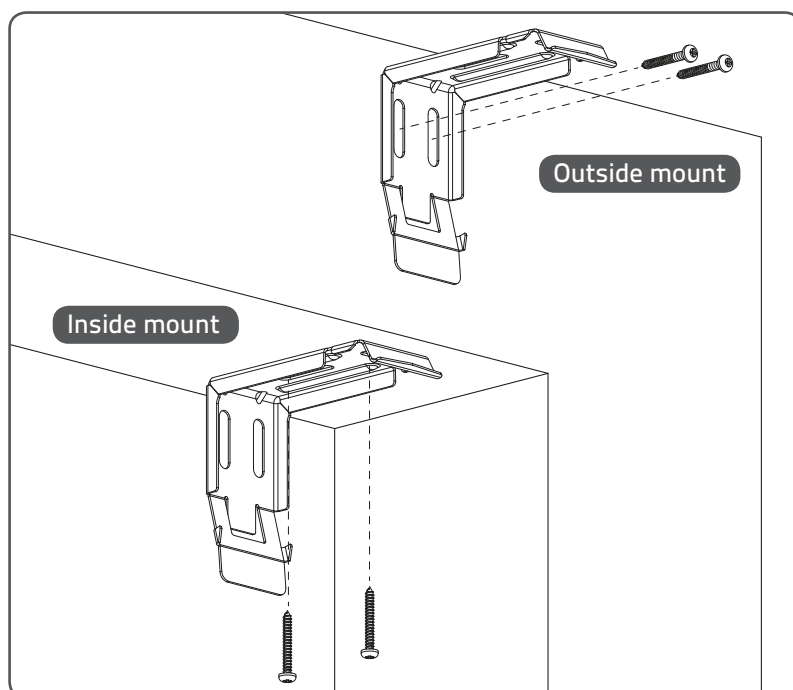
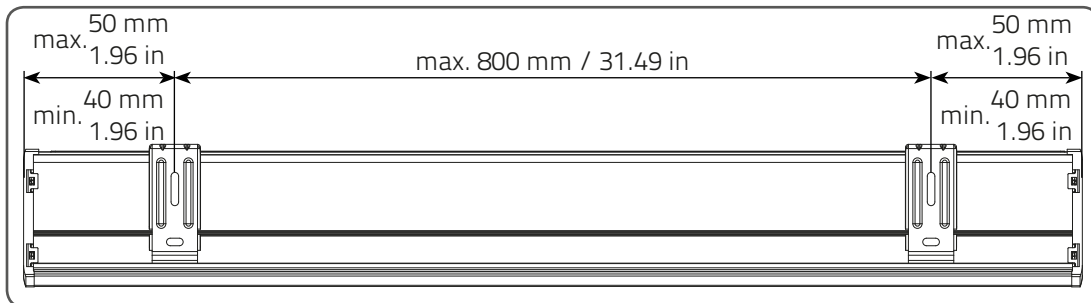
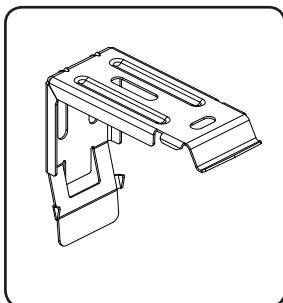
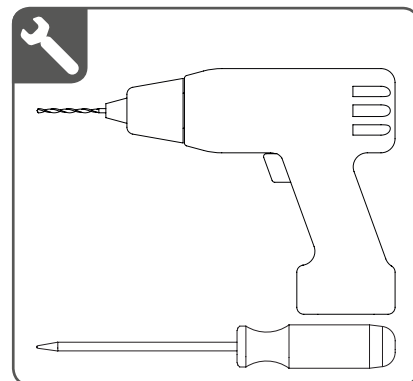
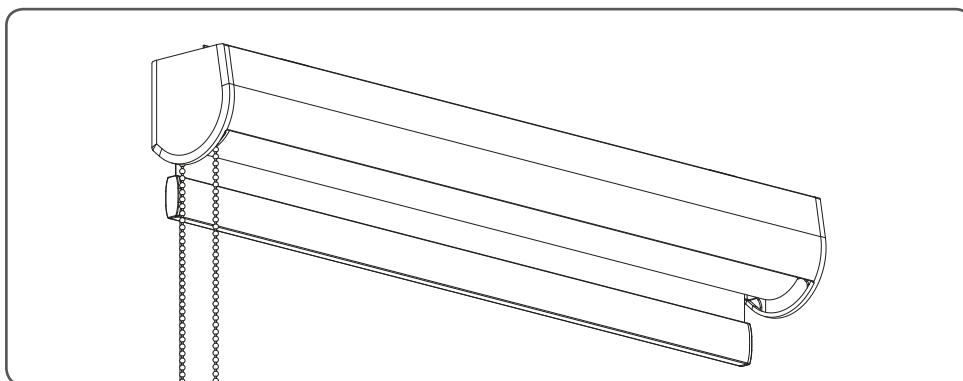
- Young children can strangle in the loop of pull cords, chains and tapes, and cords that operate window coverings.
 - To avoid strangulation and entanglement, keep cords out of the reach of young children. Cords may become wrapped around a child's neck
 - Move beds, cots and furniture away from window covering cords.
 - Do not tie cords together.
- Make sure cords do not twist together and form a loop.

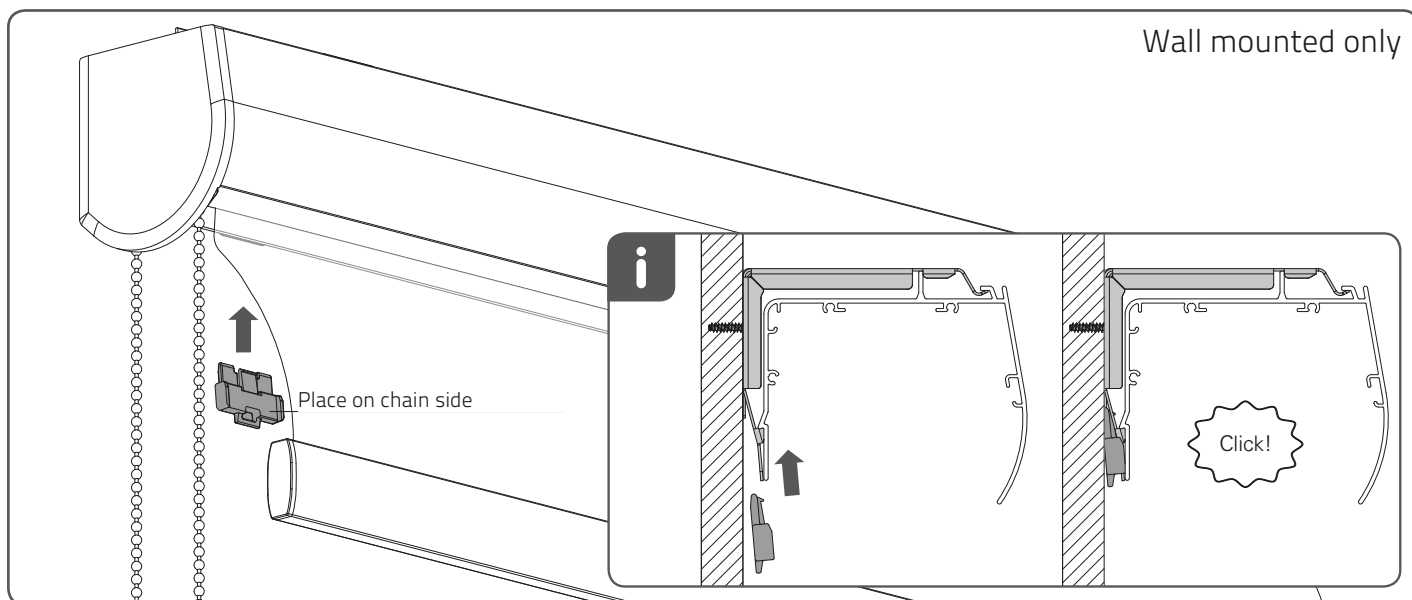
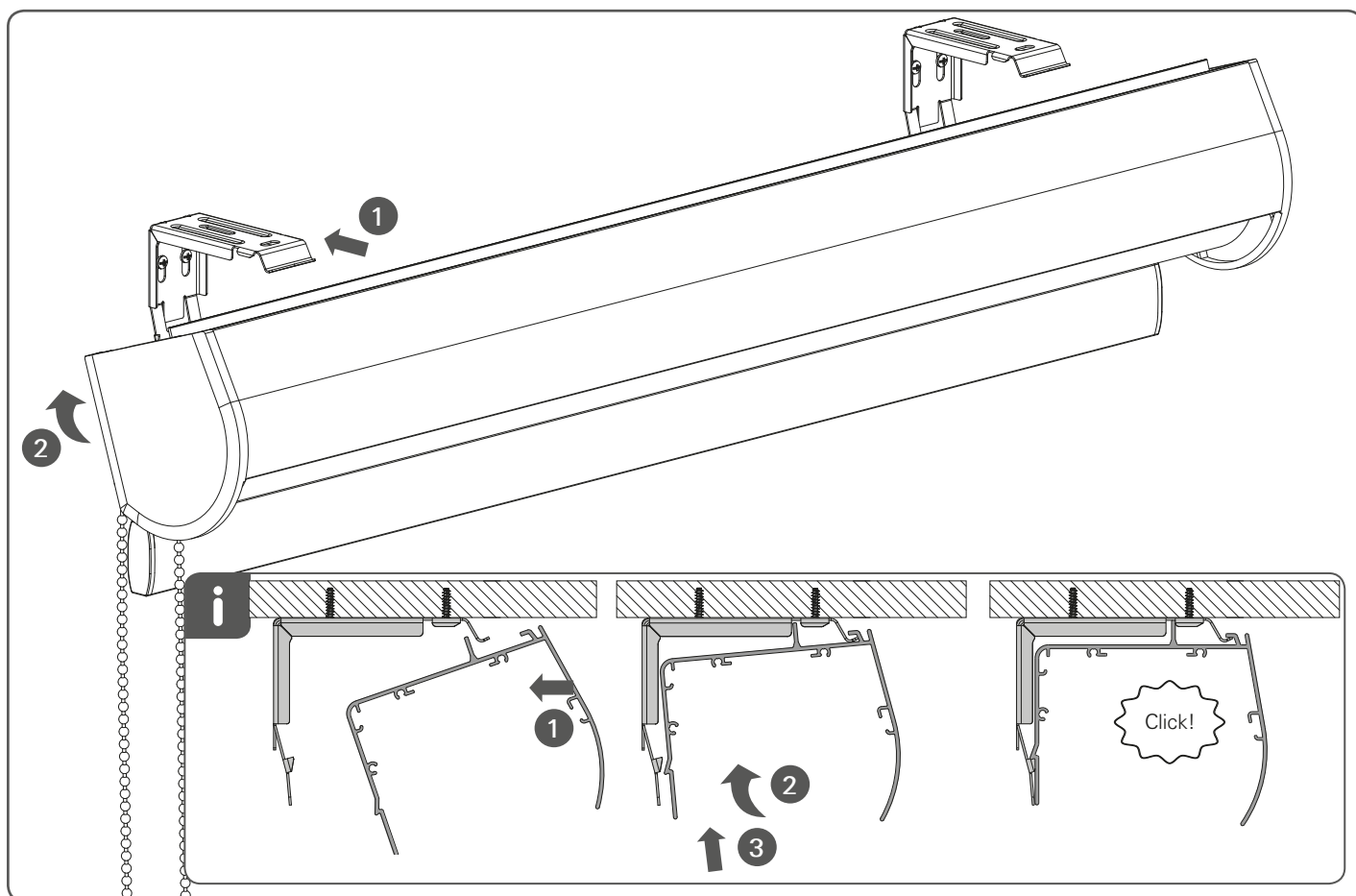


QR



rtube.nl/red235





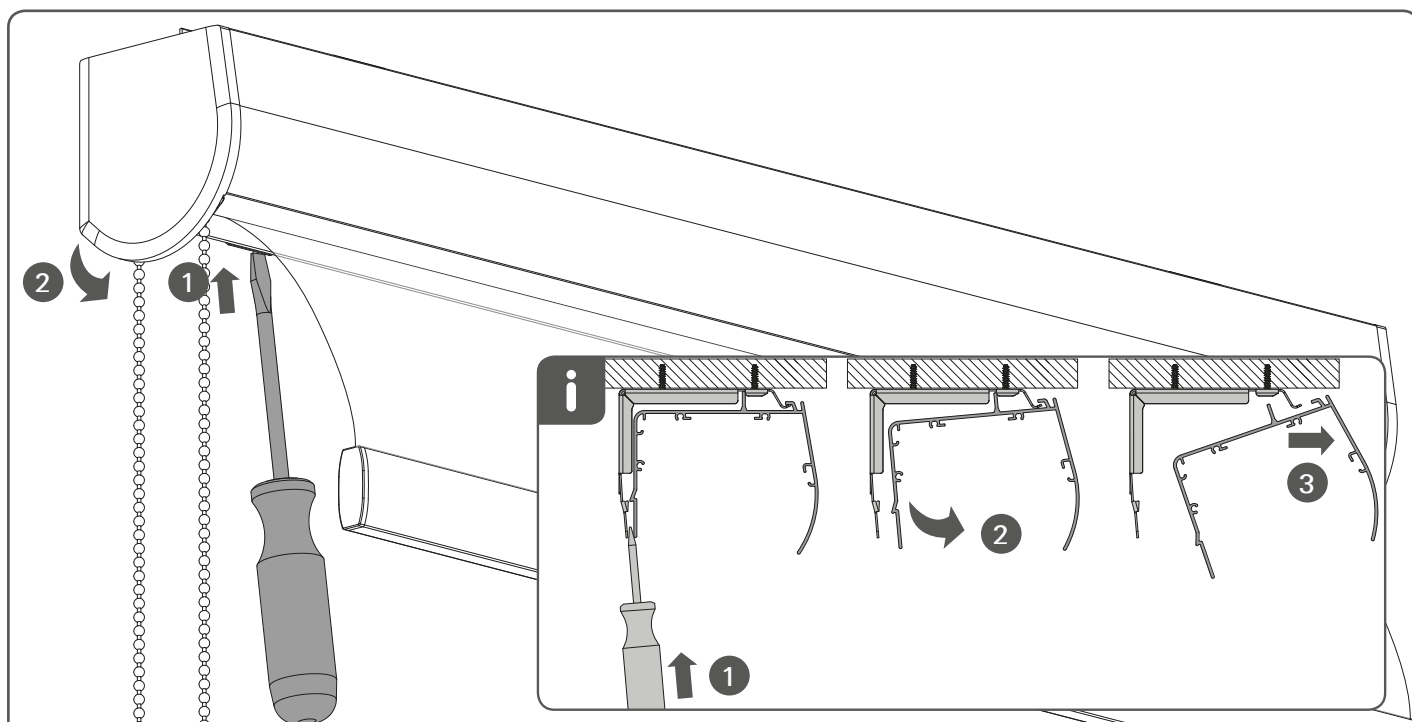
Wall mounted only

⚠ WARNING

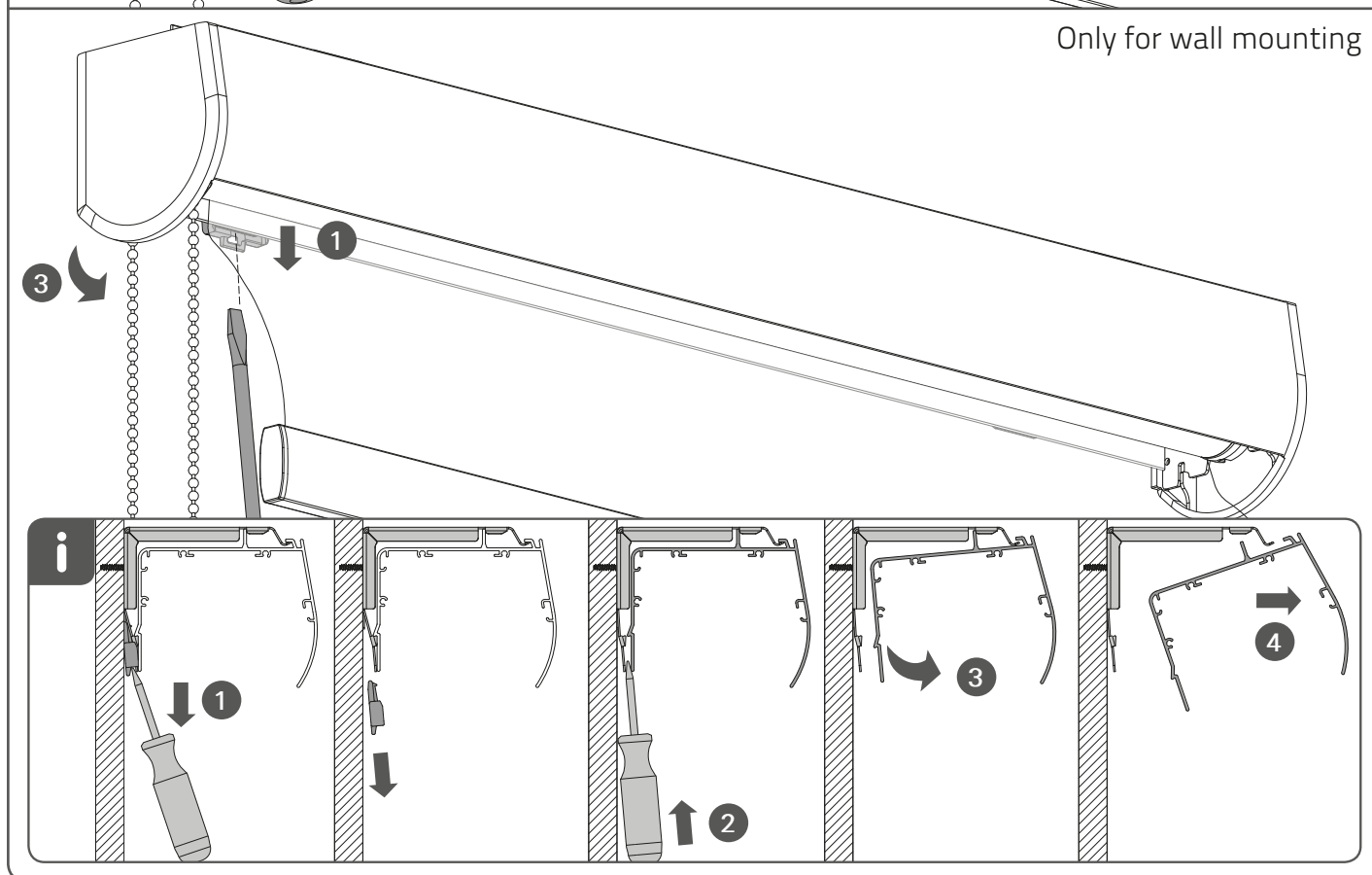
Install the child safety device as specified in the childsafe manual.



Removal



Only for wall mounting



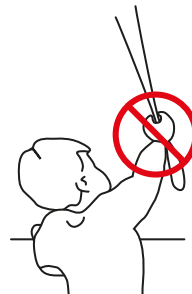
INSTALLATION INSTRUCTIONS - STANDARD BRACKETS

Installation

Read the instructions carefully before assembling and using the product.
Assembling process can be completed by non-professionals. For indoor use only.

WARNING

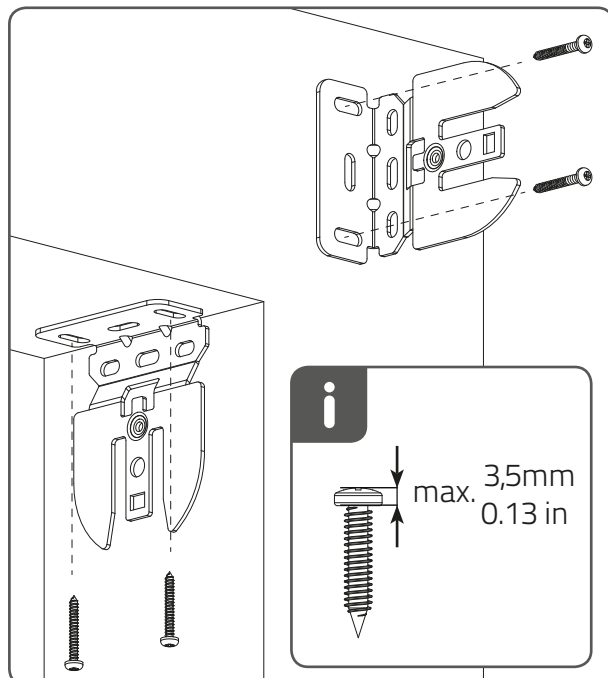
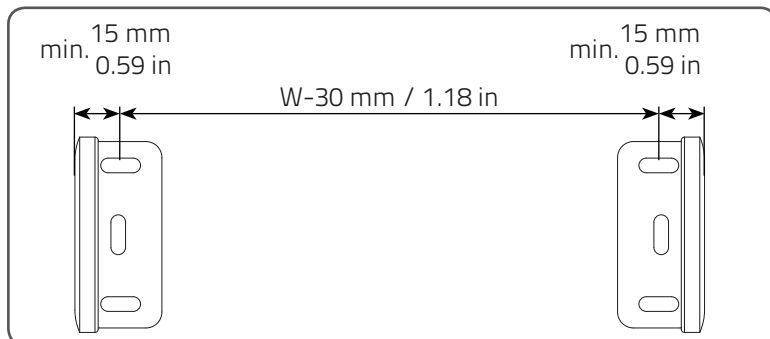
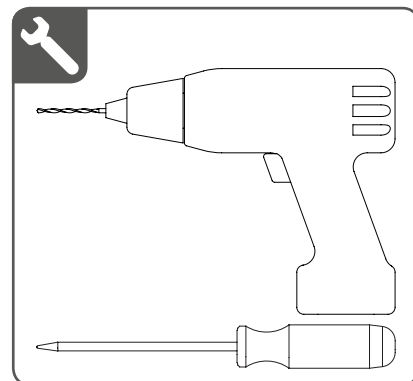
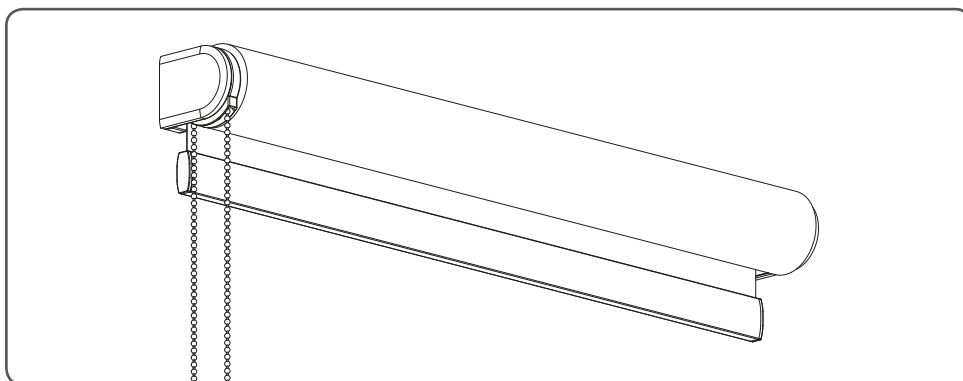
- Young children can strangle in the loop of pull cords, chains and tapes, and cords that operate window coverings.
 - To avoid strangulation and entanglement, keep cords out of the reach of young children. Cords may become wrapped around a child's neck
 - Move beds, cots and furniture away from window covering cords.
 - Do not tie cords together.
- Make sure cords do not twist together and form a loop.

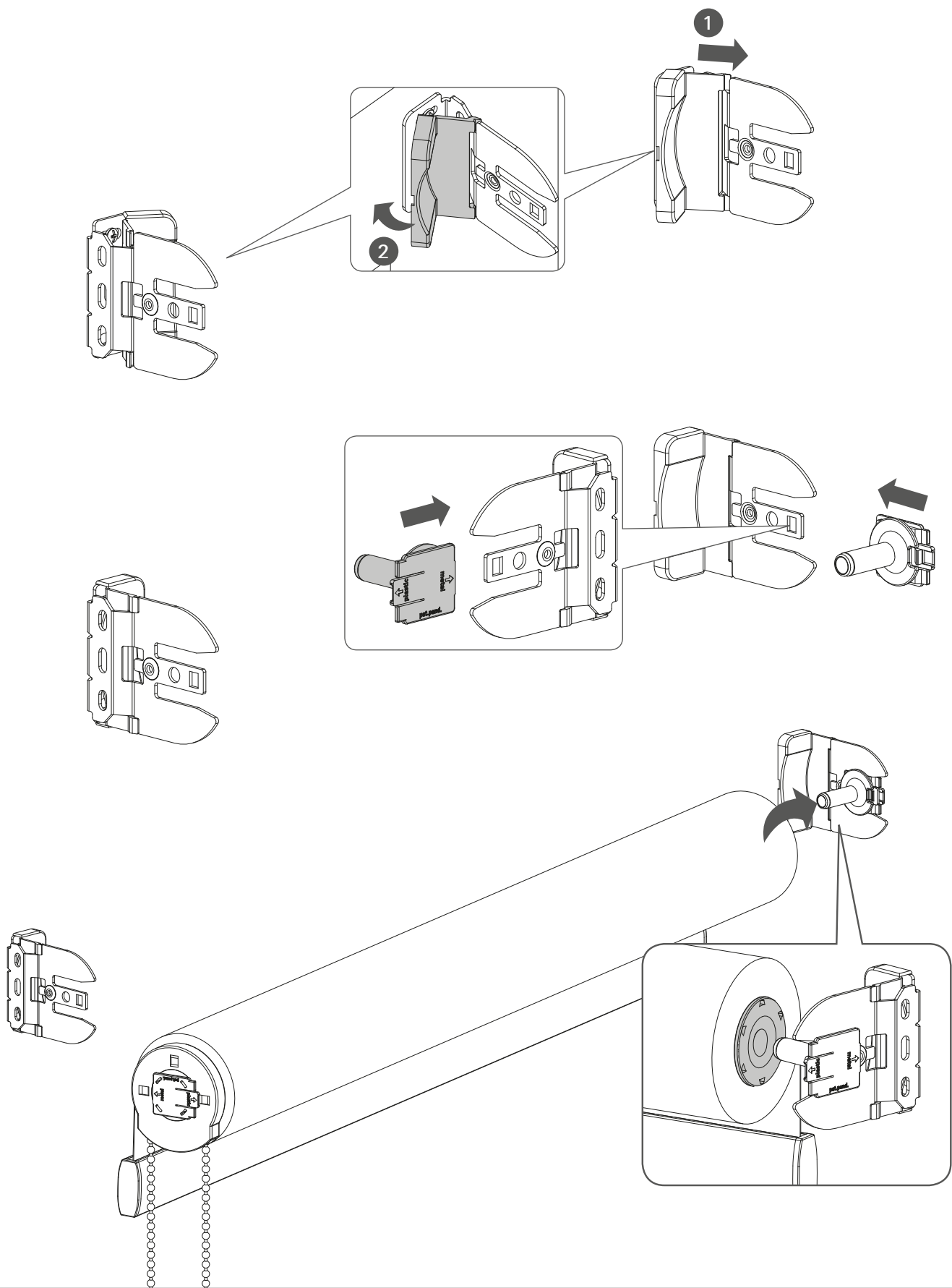


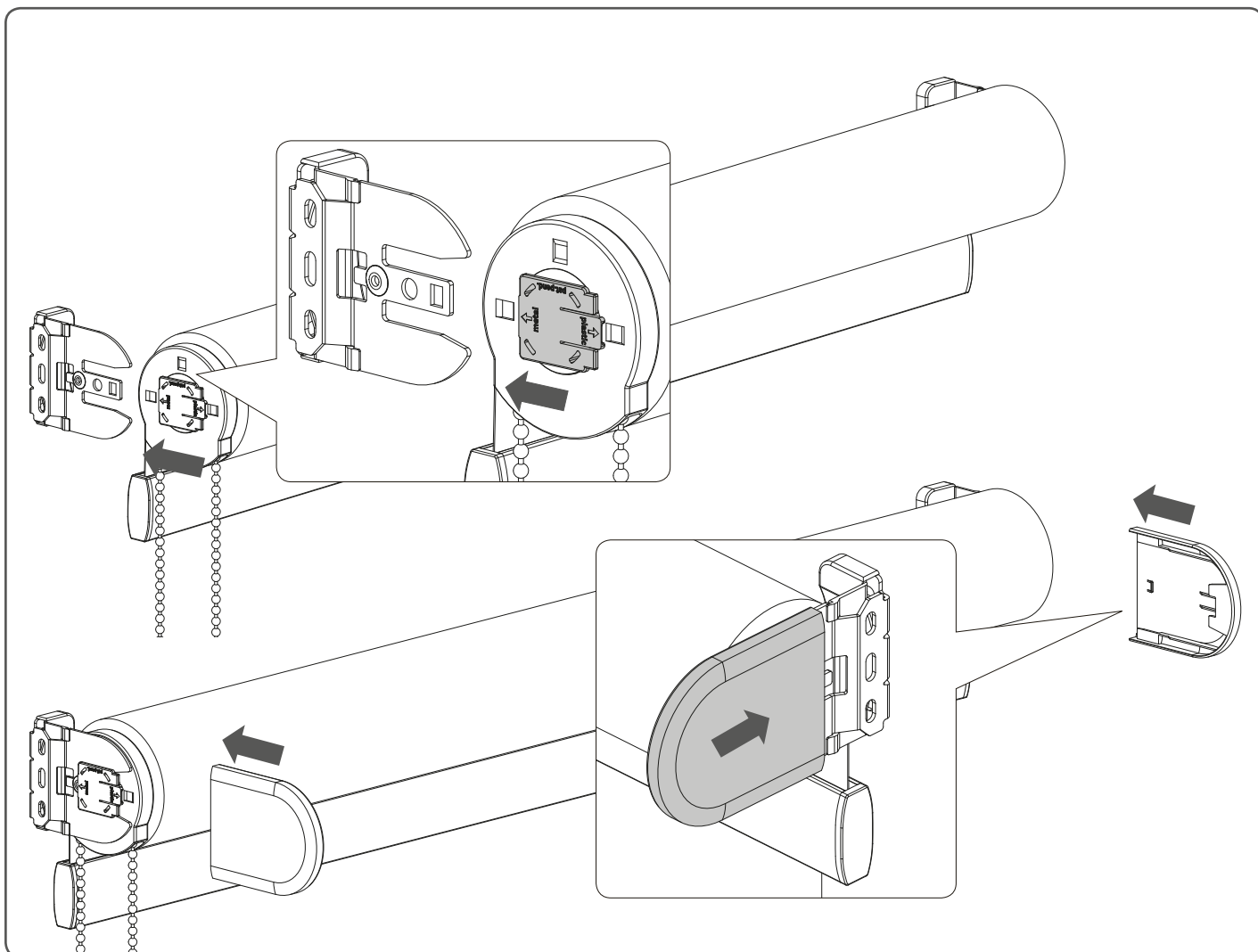
QR



rtube.nl/red233





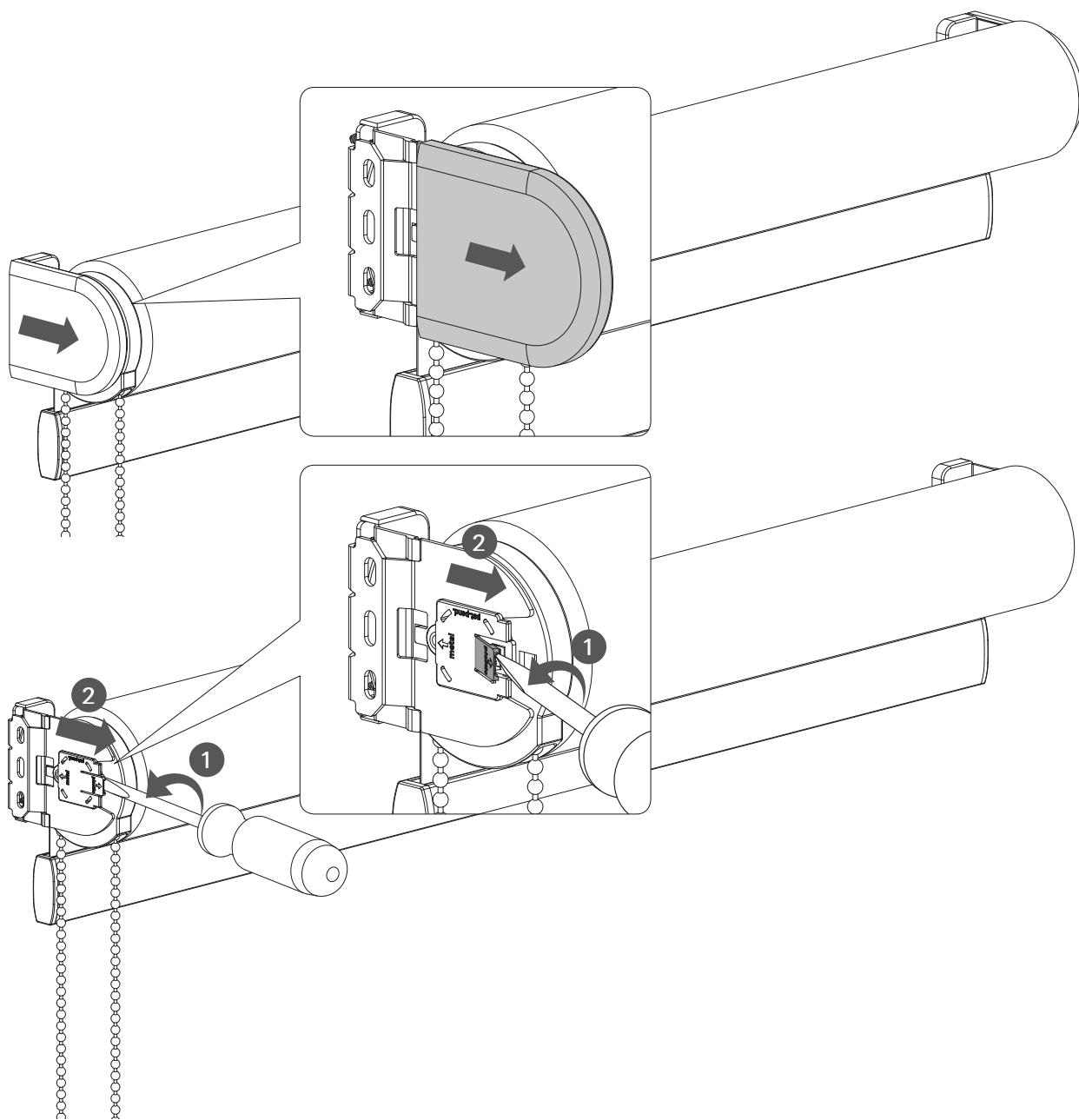


⚠ WARNING

Install the child safety device as specified in the childsafe manual.



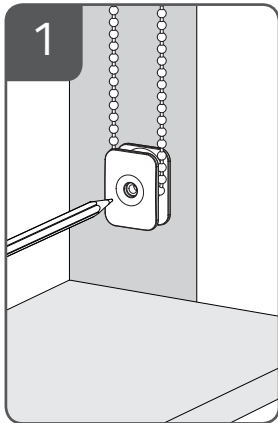
Removal



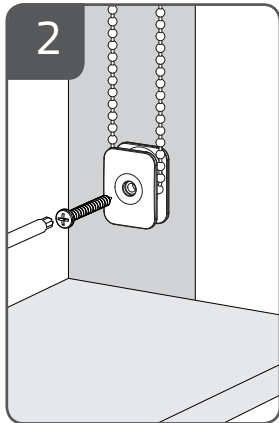
WARNING

The Safety Device is a fixed tension device for operating ball-chains that form a continuous loop. This device must be applied in chain loops that do not have a breakaway design. The safety device prevents free-hanging loops in operating chains. Install the safety device at the maximum distance possible from the control mechanism to prevent slack in the loop. Upon delivery to the end user, the device must be attached to the chain. The tensioning device is provided with fasteners for installation to wooden wall substrates. Please read the following information when installing the tensioning device. For other wall types please use appropriate screws that are suitable for your wall.

A: Inside Mount: Fully recessed shade and safety device

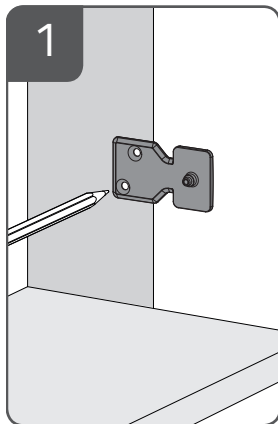


Position so there is no slack within the loop.

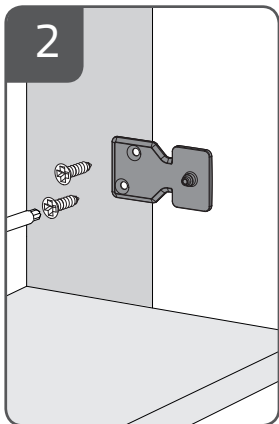


Mount the safety device.

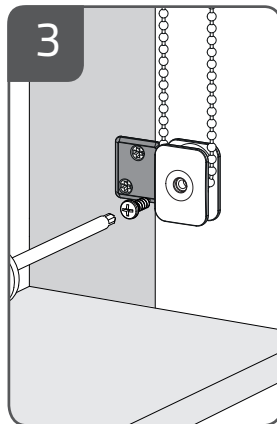
B: Inside Mount: Partially recessed shade and safety device



Position so there is no slack within the loop.

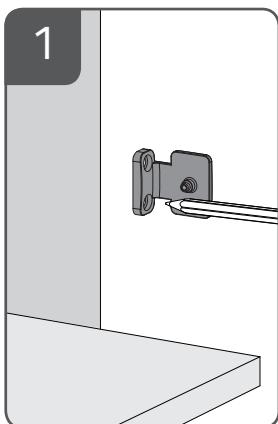


Secure mounting bracket.

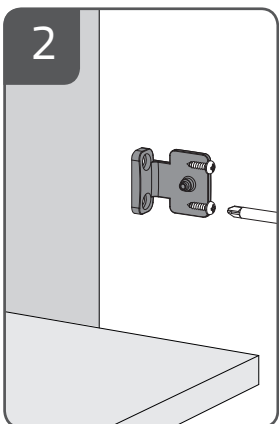


Mount safety device to the mounting bracket.

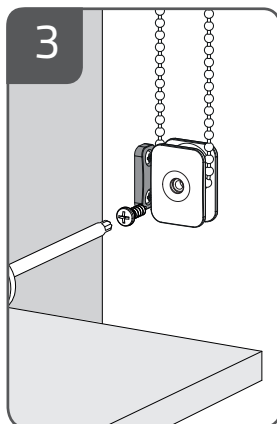
C: Outside Mount: Shade and safety device outside window



Position so there is no slack within the loop.

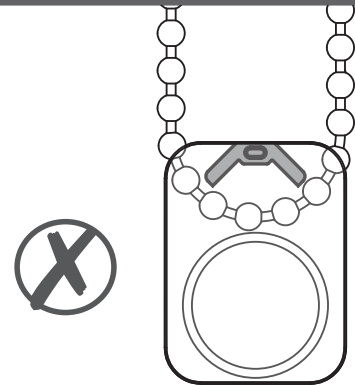


Secure mounting bracket.

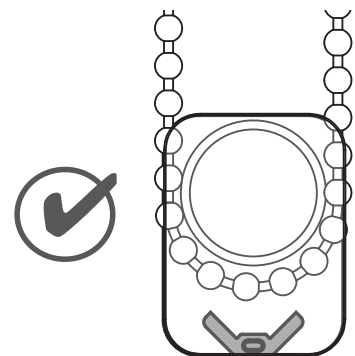


Mount safety device to the mounting bracket.

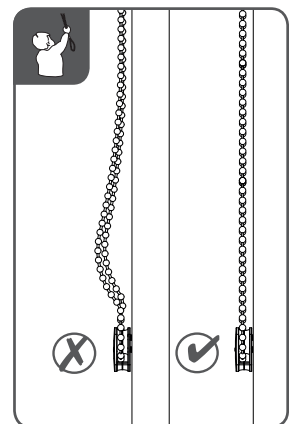
INSTALLATION TIPS



Shade will not operate if safety device is upside down.



Position the chain around the circular side of the safety device before installing.



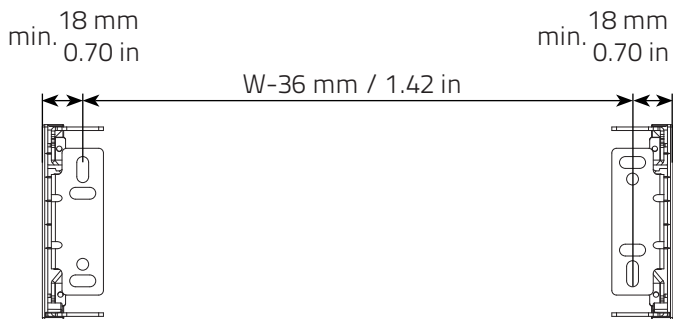
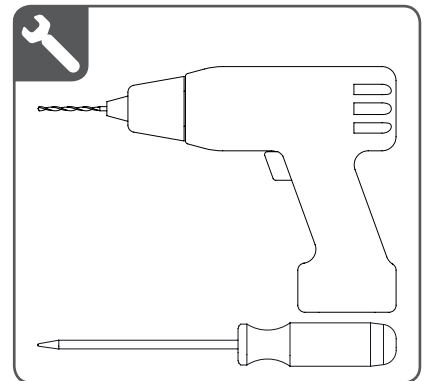
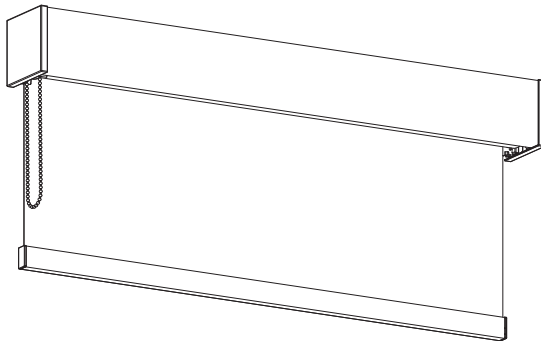
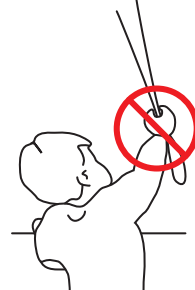
Install the safety device so there is no slack in the chain loop.

Installation - Fascia

Read the instructions carefully before assembling and using the product.
Assembling process can be completed by non-professionals. For indoor use only.

WARNING

- Young children can strangle in the loop of pull cords, chains and tapes, and cords that operate window coverings.
- To avoid strangulation and entanglement, keep cords out of the reach of young children. Cords may become wrapped around a child's neck
- Move beds, cots and furniture away from window covering cords.
- Do not tie cords together.
Make sure cords do not twist together and form a loop.



Step One:

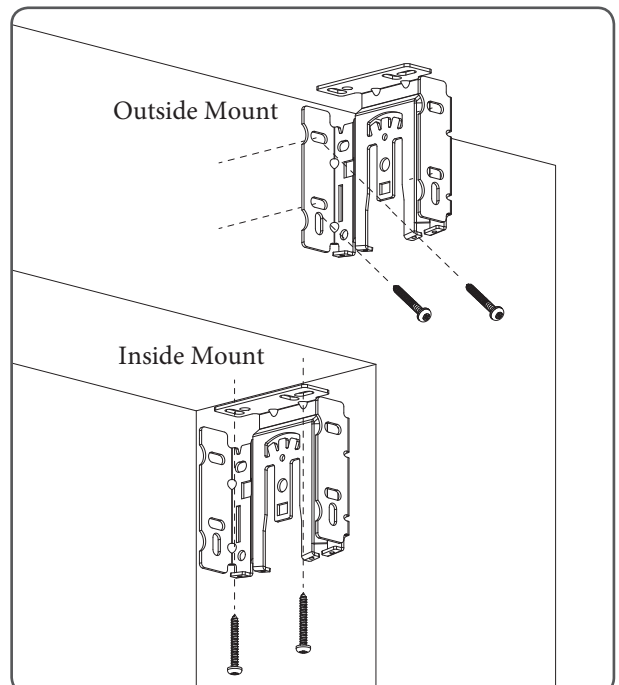
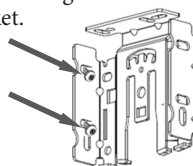
- Use the brackets to mark the screw locations
- On outside mount, make your marks so the distance from the outside edge of the bracket to the outside edge of the other bracket equals your ordered width

Note: Brackets must be level to each other for the shade to operate properly (for both inside mount and outside mount)

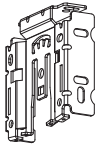
Step Two:

- Recommend you pre-drill the screw holes using a 5/64" drill bit where you marked the screw locations
- Mount the brackets using 2 screws for each bracket

Note: On outside mount, the screws will be installed on an angle. This is normal and the screws may not be flat against the bracket.

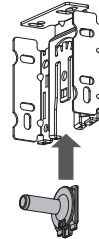


Installation



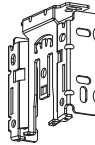
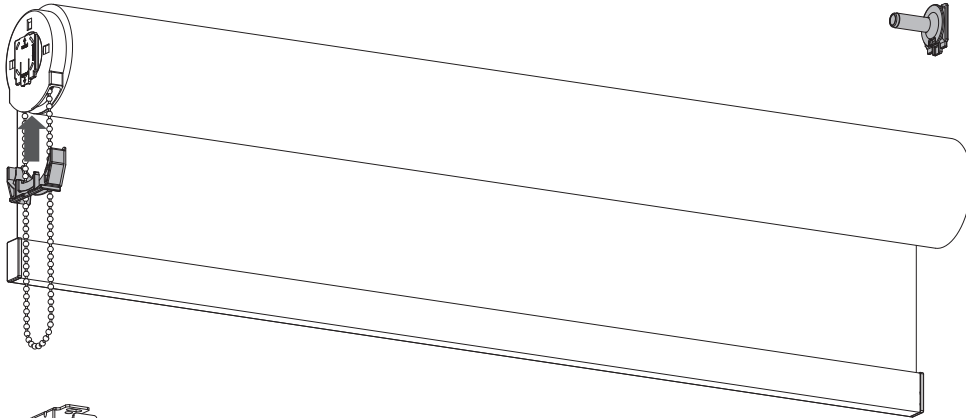
Step Three:

- The idle side attachment should be on the opposite side of the chain (simply click into the bracket if it is not already attached)



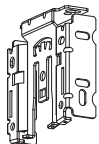
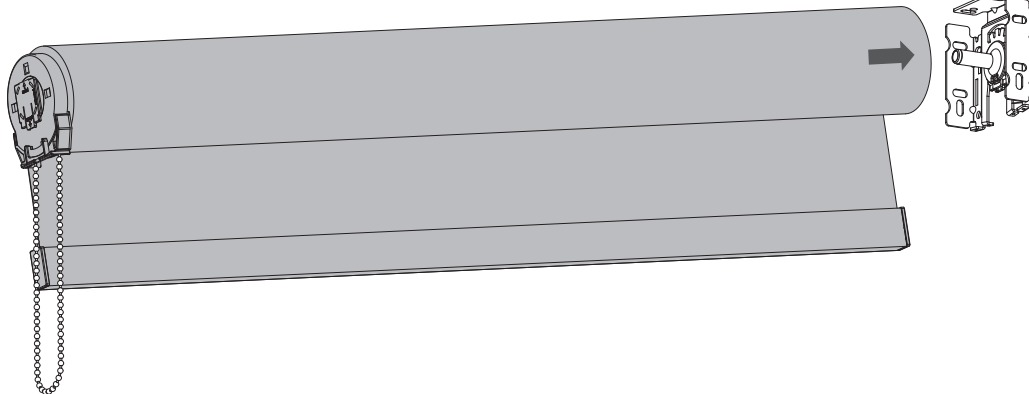
Step Four:

- Slide the chain guide onto the clutch



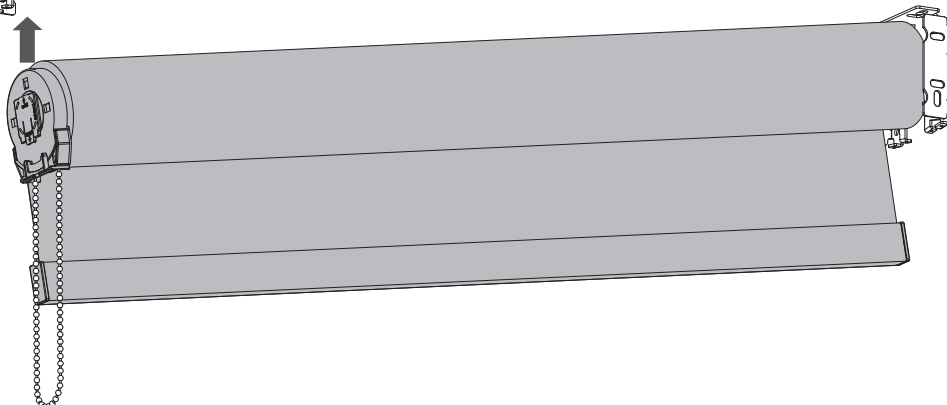
Step Five:

- Slide the idle side of the shade on to the idle side connector



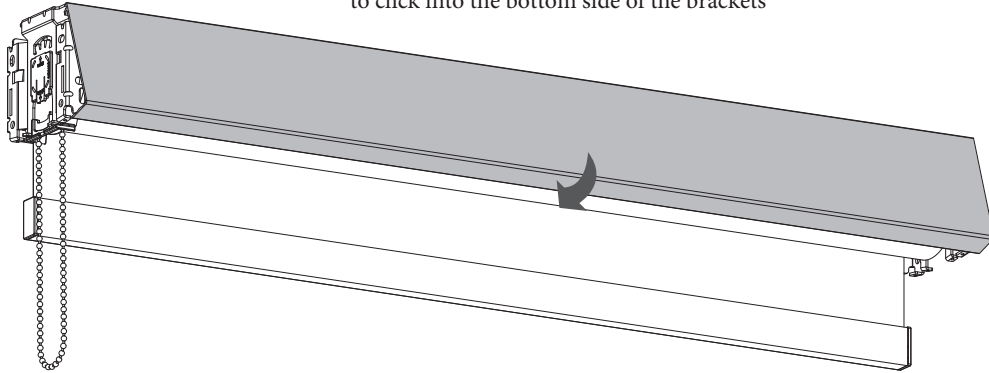
Step Six:

- Click the control side of the shade the bracket



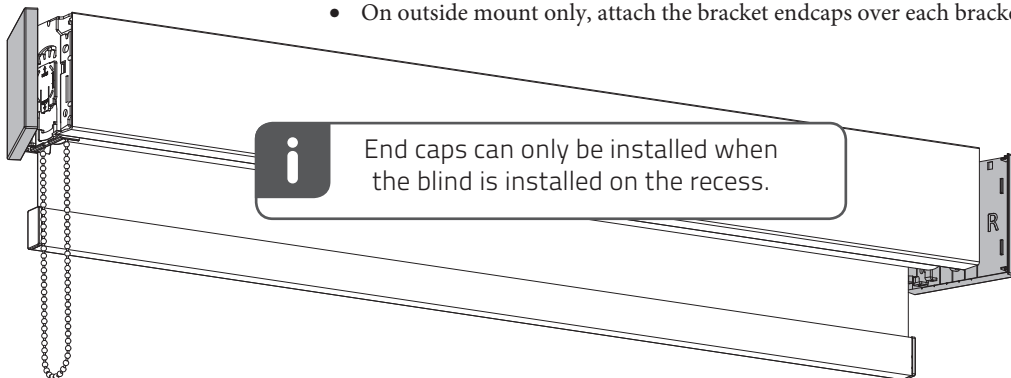
Step Seven:

- Connect the fascia to the top of the brackets and rotate it down to click into the bottom side of the brackets



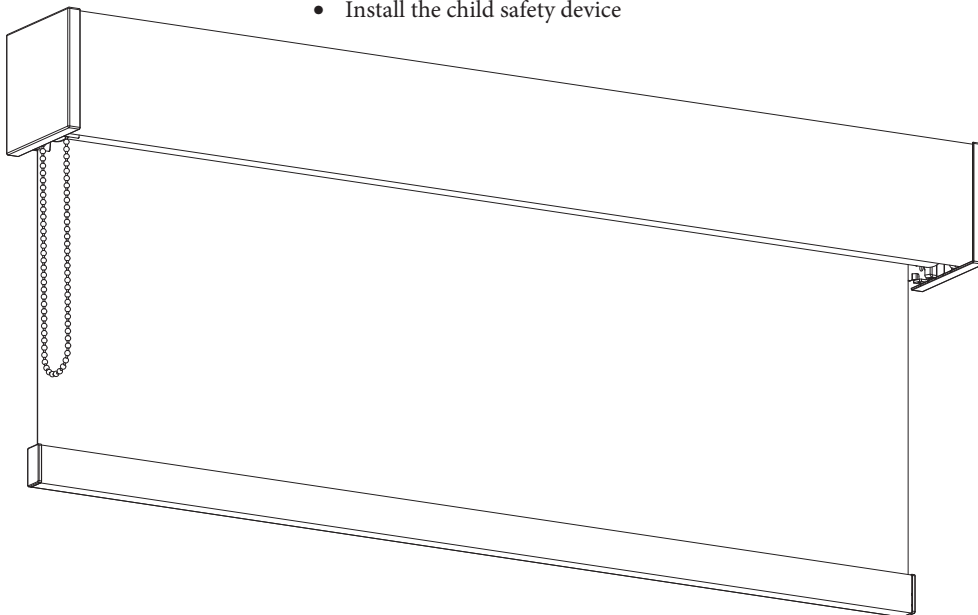
Step Eight:

- On outside mount only, attach the bracket endcaps over each bracket



Final Step:

- Install the child safety device



CORNICE INSTALLATION INSIDE MOUNT

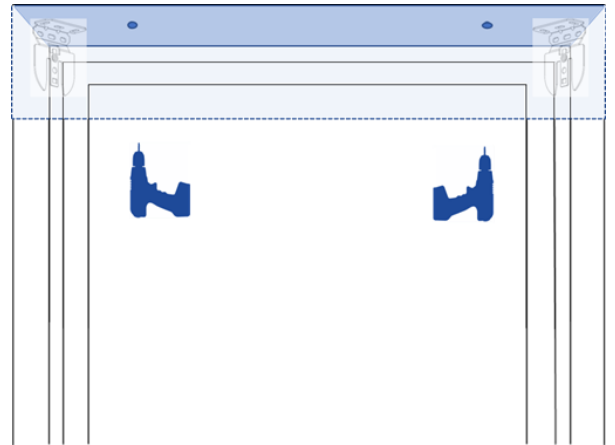
NOTE:

Your cornice will have pre-drilled holes.

The brackets for your shade will come installed on the cornice (if the cornice and shade are ordered together).

Install cornice before installing the shade.

1. Hold the cornice to the top of your window frame and set it back until it is flush with your wall or until it is touching the back of the window opening. Be sure the cornice is centered in the opening.
2. Pre-drill holes for your screws through each pre-drilled hole in your cornice.
3. Secure your cornice to the window by screwing through each pre-drilled hole.
4. Once the cornice is mounted, you can then install the shade.



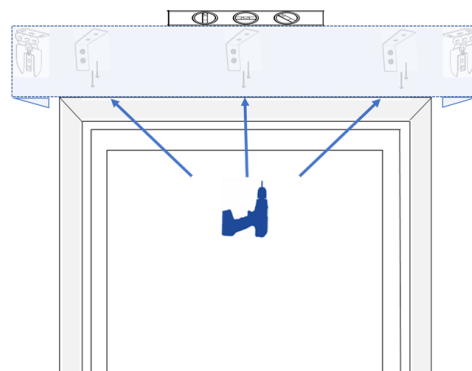
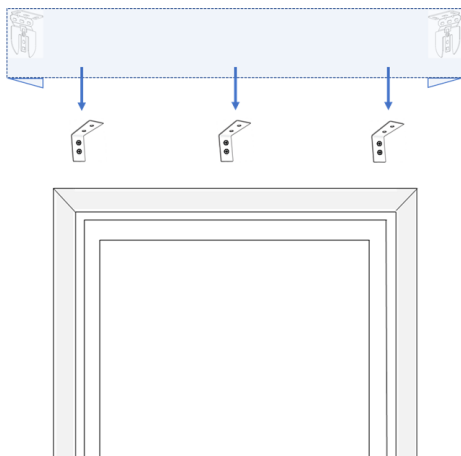
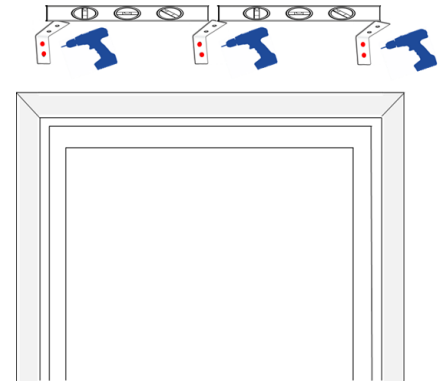
CORNICE INSTALLATION OUTSIDE MOUNT

NOTE:

The brackets for your shade will come installed on the cornice (if the cornice and shade are ordered together).

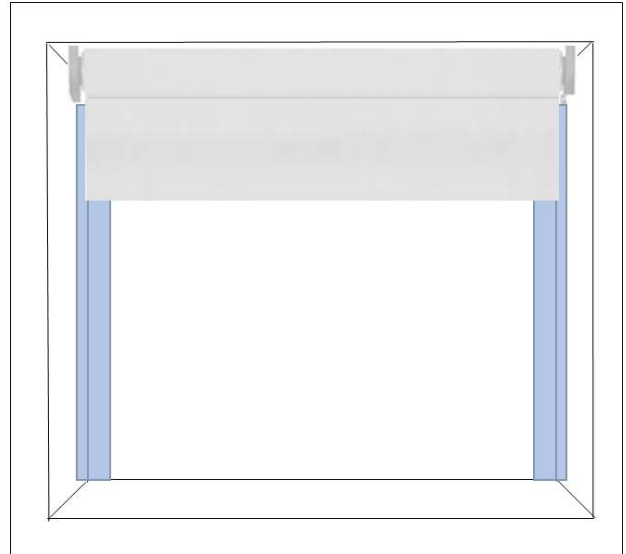
Install cornice before installing the shade.

1. Make sure the surface you intend to install your cornice hardware is sturdy enough to support the brackets. You will need to screw into wood studs that are strong enough to securely bond with the included screws or you will need to use fasteners to securely support the brackets. Please note secure fasteners are not included.
2. Center the cornice over the window opening at your desired height. Mark the position of the ends of the cornice on the wall. Measure in 6" from each end and using the cornice bracket mark the screw holes with a pencil. If you have additional cornice brackets, space them evenly between the outer brackets. Make sure all the mounting brackets are level with one another.
3. Pre-drill the holes for each cornice bracket and then secure the brackets to your mounting surface.
4. Place the cornice on top of the brackets and center it to the window. Check again that the cornice is level. Hold the cornice in place and screw through the top of each bracket into the cornice.
5. Once the cornice is secured to each bracket, then you can install the shade.



SIDE TRACKS

- 1) Install the shade first
- 2) Place Side Track into the window opening to determine if any access needs to be trimmed off
- 3) Side Tracks should fit from the windowsill up to the installed shade brackets
- 4) Remove the tape and press the Side Track against the side of the window opening
- 5) Recommend having the shade operate in front of the Side Tracks



TOP VIEW

