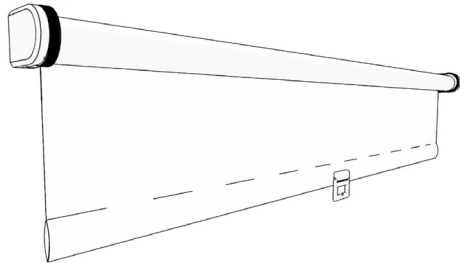


# INSTALLATION INSTRUCTIONS

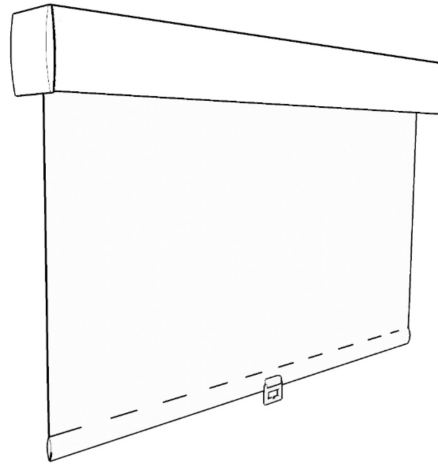
## Lifestyle Roller Shades

Cordless

### Open Roll

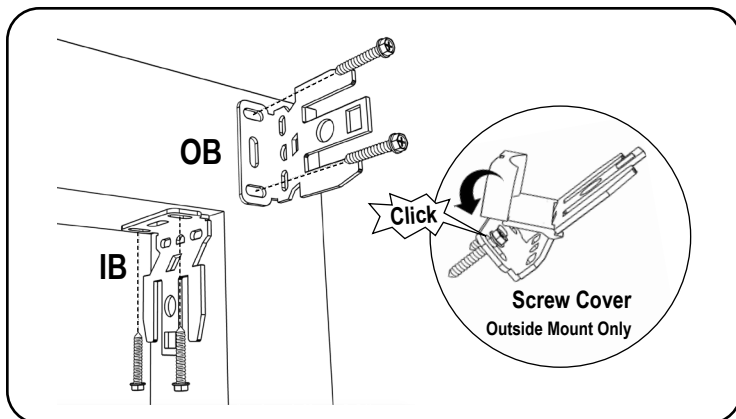


### Deco Fascia



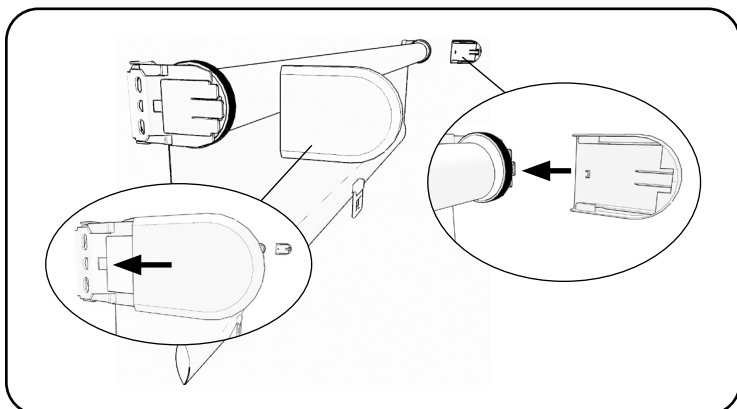
## Cordless Operated with Open Roll

### 1. Install the Brackets

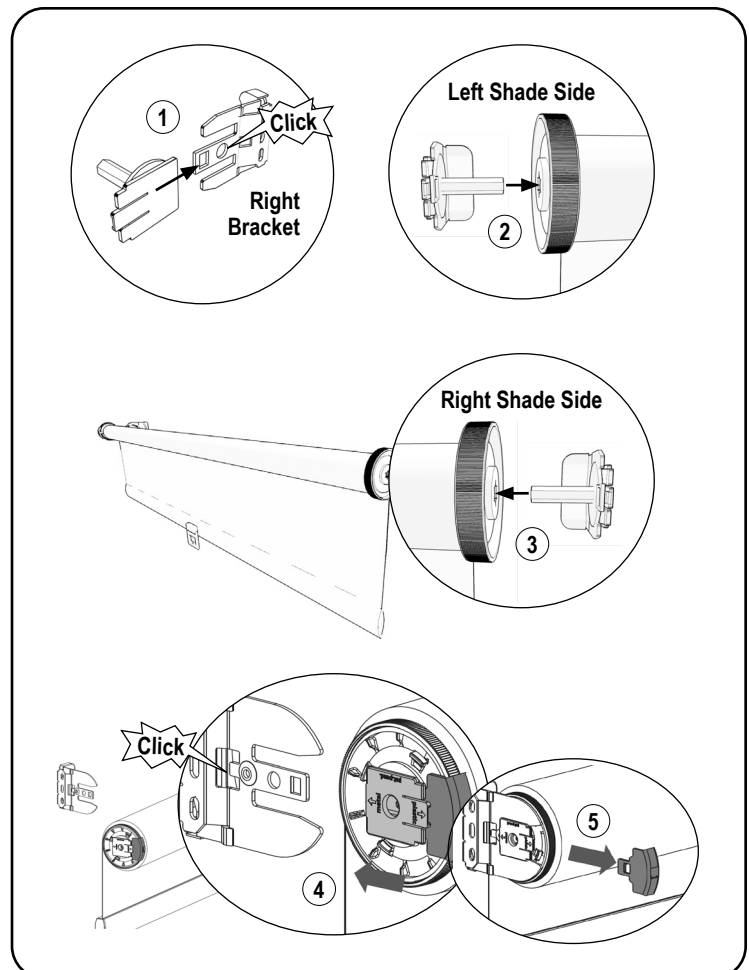


Secure the roller shade installation brackets with the supplied screws. If shade was ordered as outside mount (OB), attach the supplied screw covers on to the bracket for a finished look.

### 3. Install the Bracket Covers (if applicable)



### 2. Install the Shade

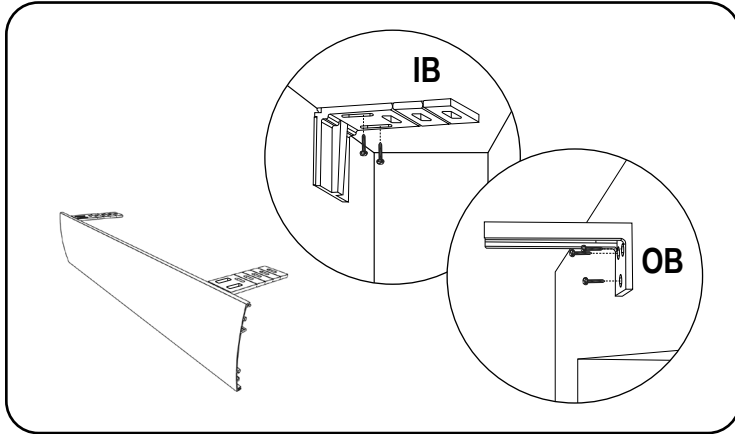


**DO NOT REMOVE THE RED PLASTIC CLIP. IT WILL DISENGAGE ONCE THE BRACKET HAS BEEN INSTALLED.**

# INSTALLATION INSTRUCTIONS

## Cordless Operated with Deco Fascia

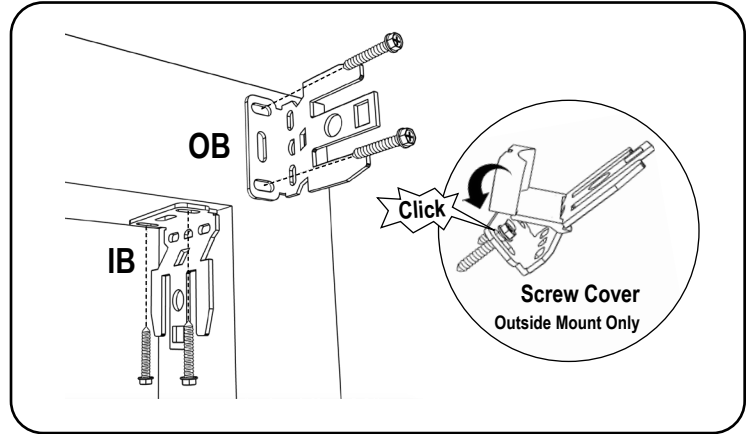
### 1. Install the Fascia Brackets



Outside mount (OB) requires a T-Bracket installation. Space brackets evenly.

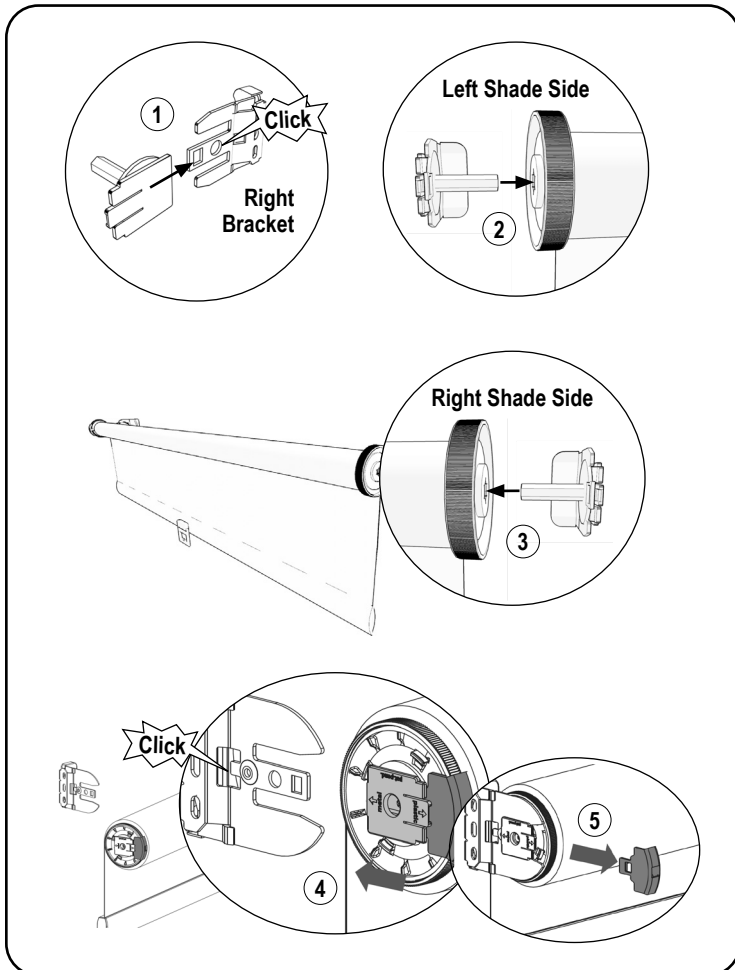
**Note:** Do not attach the Deco Fascia until the shade has been installed.

### 2. Install the Brackets



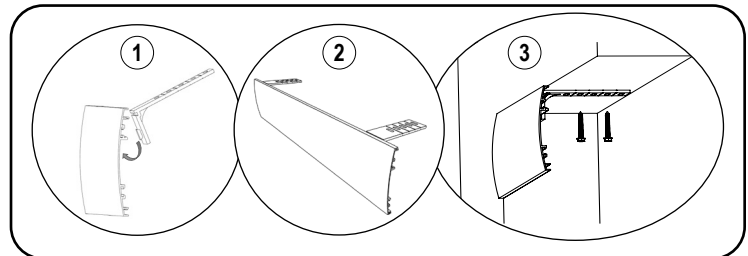
Secure the roller shade installation brackets with the supplied screws. If shade was ordered as outside mount (OB), attach the supplied screw covers on to the bracket for a finished look.

### 3. Install the Shade

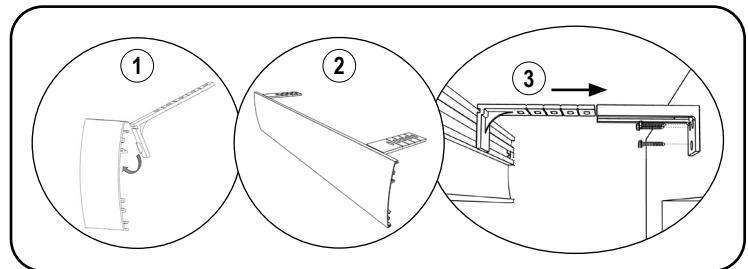


**DO NOT REMOVE THE RED PLASTIC CLIP. IT WILL DISENGAGE ONCE THE BRACKET HAS BEEN INSTALLED.**

### 4. Install the Deco Fascia

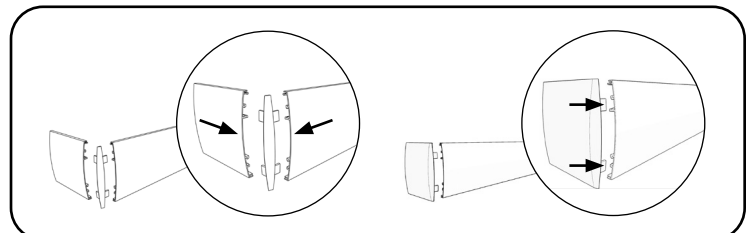


Inside Mount (IB)



Outside Mount (OB)

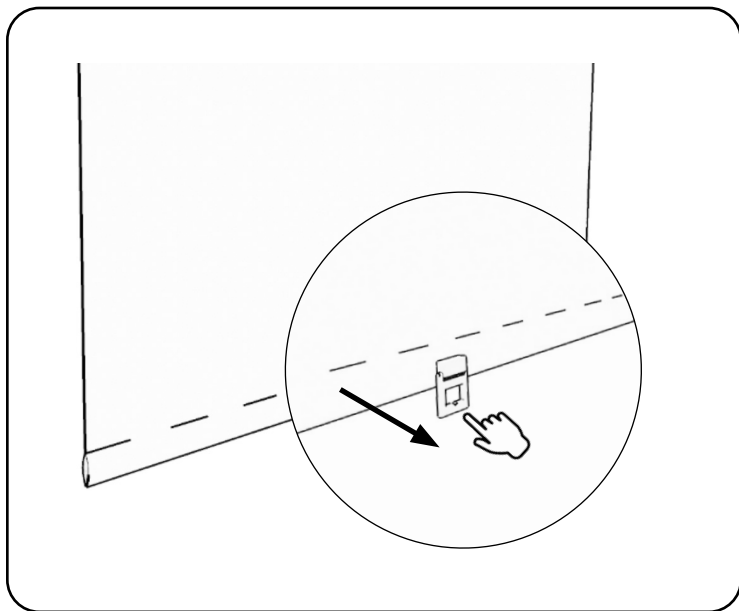
### 5. Install the Returns (Optional)



Metal returns (Outside mount only) include a plastic corner connector. Plastic returns (Inside mount with Outside Mounted fascia) snap on the end of the fascia.

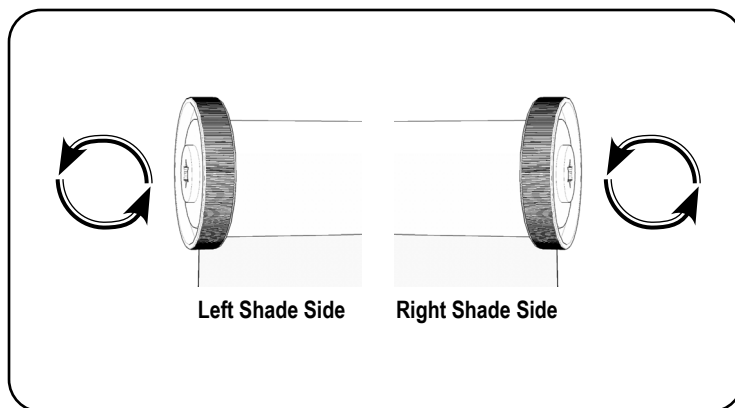
## INSTALLATION INSTRUCTIONS

### Operate the Cordless Shade



Pull the bottom handle and let go to lock it into the desired length.

### Adjust the Tensioner



To **lower tension or speed**, turn the left side wheel towards the back of the shade. To **add tension or speed**, turn the left side wheel towards the front of the shade while holding the bottomrail.

To **shorten the length** of the shade, turn the right side wheel towards the front of the shade. To **lengthen the shade**, turn the right side wheel towards the back of the shade.

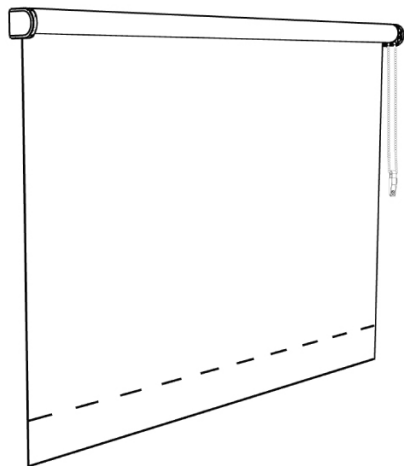


# INSTALLATION INSTRUCTIONS

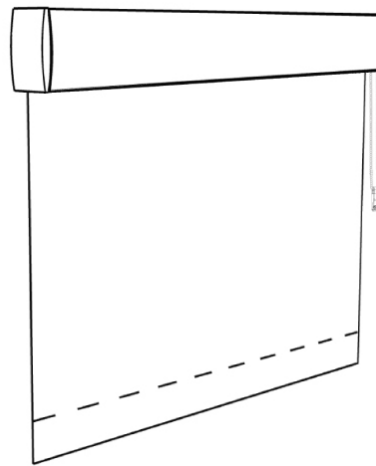
## Lifestyle Roller Shades

Cordless

### Open Roll

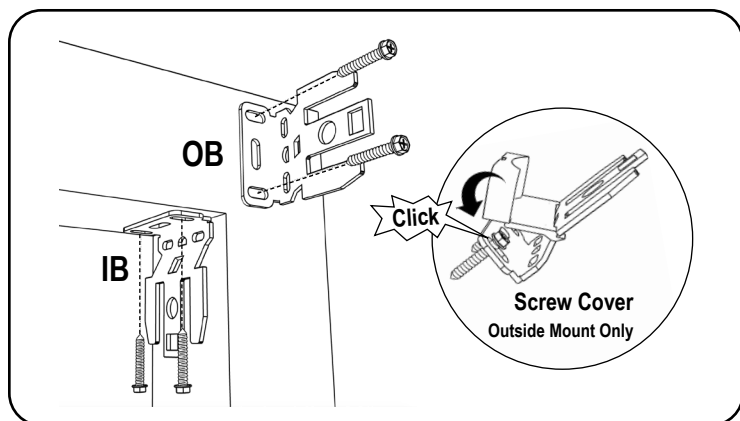


### Deco Fascia



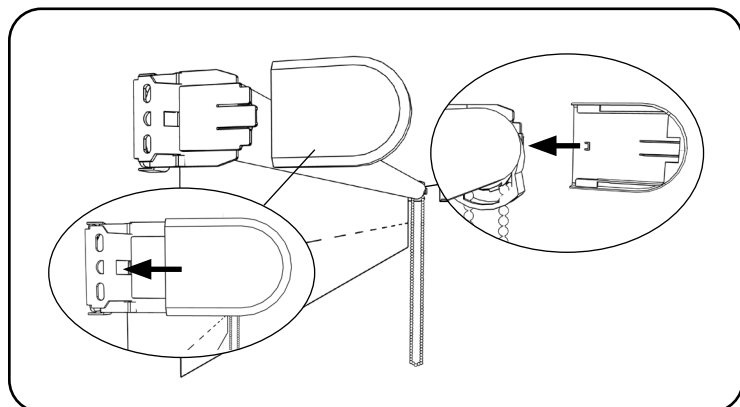
### Clutch Operated with Open Roll

#### 1. Install the Brackets

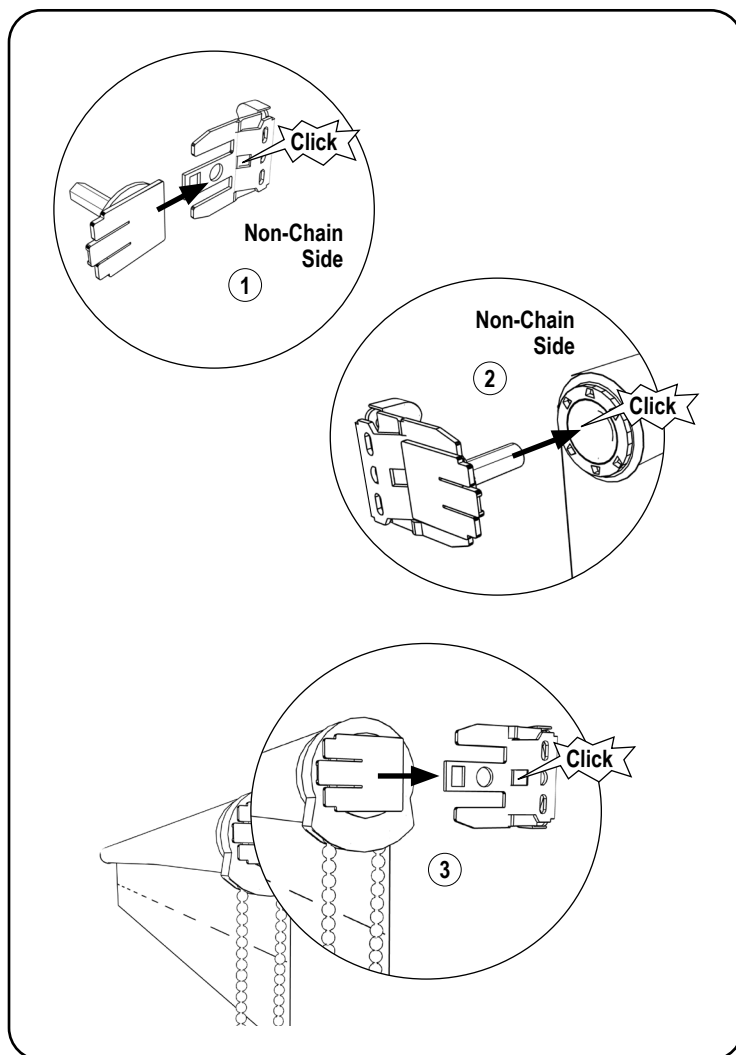


Secure the roller shade installation brackets with the supplied screws. If shade was ordered as outside mount (OB), attach the supplied screw covers on to the bracket for a finished look.

#### 3. Install the Bracket Covers (if applicable)



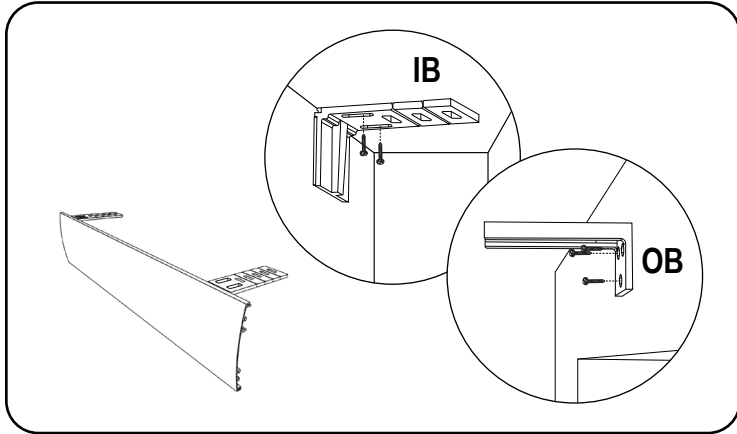
#### 2. Install the Shade



# INSTALLATION INSTRUCTIONS

## Clutch Operated with Deco Fascia

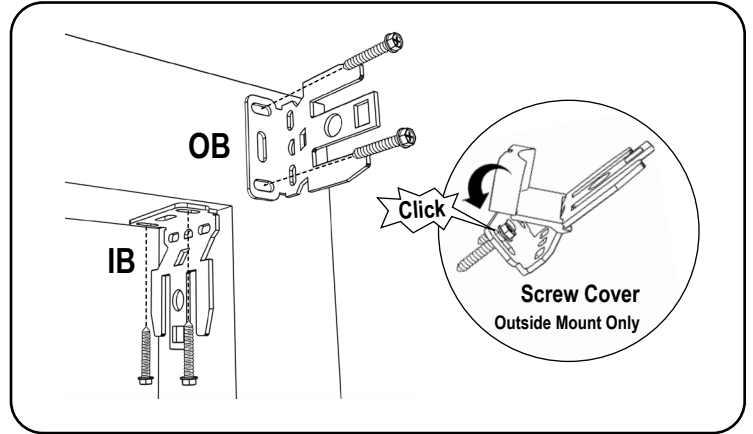
### 1. Install the Fascia Brackets



Outside mount (OB) requires a T-Bracket installation. Space brackets evenly.

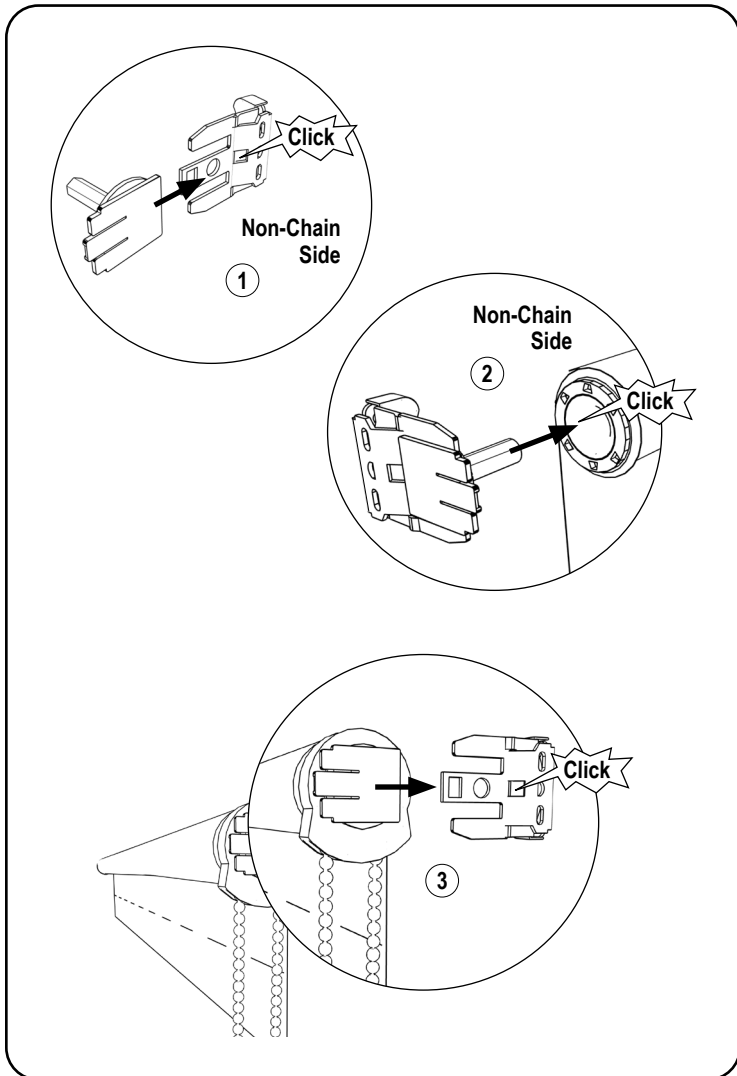
**Note:** Do not attach the Deco Fascia until the shade has been installed.

### 2. Install the Brackets

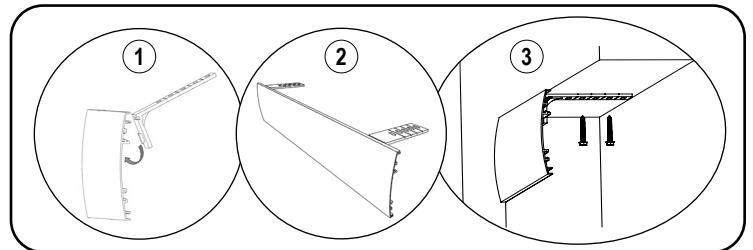


Secure the roller shade installation brackets with the supplied screws. If shade was ordered as outside mount (OB), attach the supplied screw covers on to the bracket for a finished look.

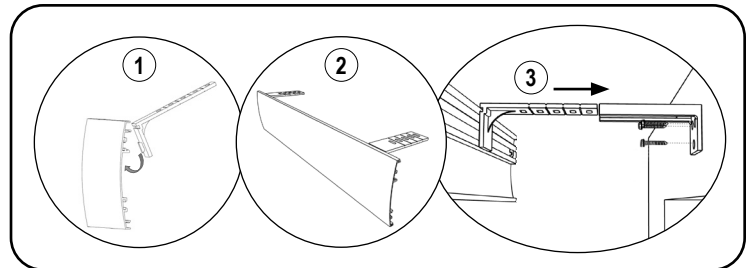
### 3. Install the Shade



### 4. Install the Deco Fascia

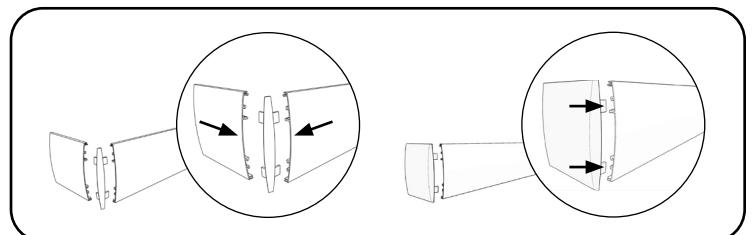


Inside Mount (IB)



Outside Mount (OB)

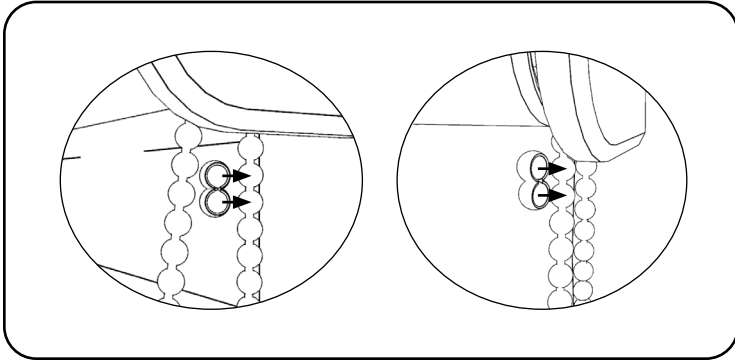
### 5. Install the Returns (Optional)



**Metal returns** (Outside mount only) include a plastic corner connector. **Plastic returns** (Inside mount with Outside Mounted fascia) snap on the end of the fascia.

## INSTALLATION INSTRUCTIONS

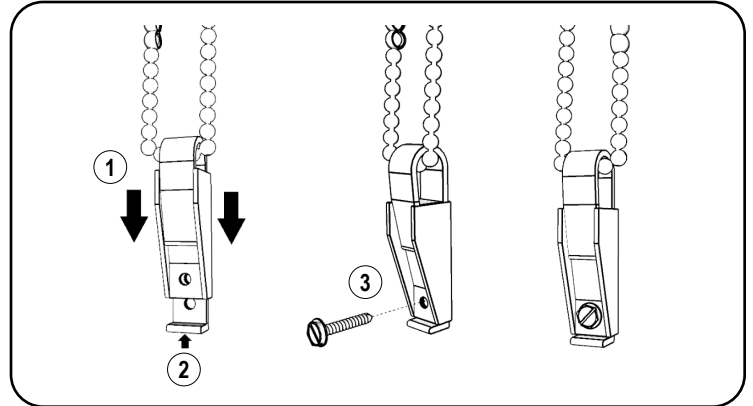
### Set the Limits



**Upper Limit**, pull the back chain until the desired upper position. Then, snap the chain stop to the bead just below the clutch.

**Lower Limit**, pull the front chain until the desired lower position. Then, snap the chain stop to the bead just below the clutch.

### Install the Safety Tension Device



Slide device down to the bottom of the bead chain and pull down until the chain is taut on both sides. Mark the screw hole and install the device with the screws provided.

## Child Safety

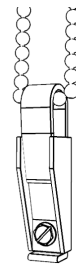
Young children can **STRANGLE** in cord loops and in the loop above the cord stop. They can also wrap cords around their necks and **STRANGLE**.

- Always keep cords out of children's reach.
- Move cribs, playpens and other furniture away from cords.  
Children can climb furniture to get to cords.
- Do not tie cords together.
- Make sure cords do not twist together and create a loop.

<b>WARNING/ADVERTENCIA</b>	
5.1.3	Rev. 5/18 Print 5/18
	Window Blind Cord Can <b>STRANGLE</b> Your Child. To prevent strangulation, purchase cordless products or products with inaccessible cords.
	La cuerda de la persiana puede <b>ESTRANGULAR</b> a su niño. Para evitar el estrangulamiento, compre alternativas cuerda o productos con cuerdas inaccesibles.

### Beaded Cord Loop Shades

- Attach the tensioner to the wall or window casement. See Install the Safety Tension Device. This can prevent children from pulling cord loops around their necks.
- A tensioner installation kit with instructions for attaching the tensioner is provided. For the shade to operate properly, the tensioner must be correctly mounted and secured. See tensioner instructions provided for details.
- Only the supplied tensioner(s) and hardware should be used.

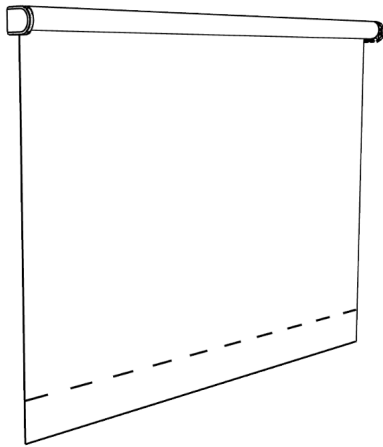


# INSTALLATION INSTRUCTIONS

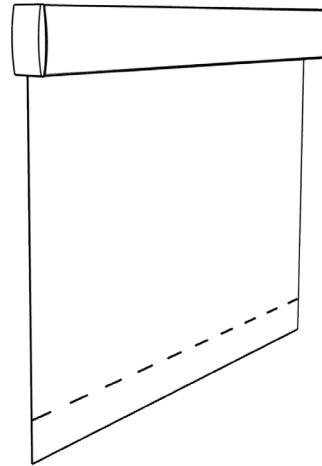
## Lifestyle Roller Shades

Motorized

### Open Roll



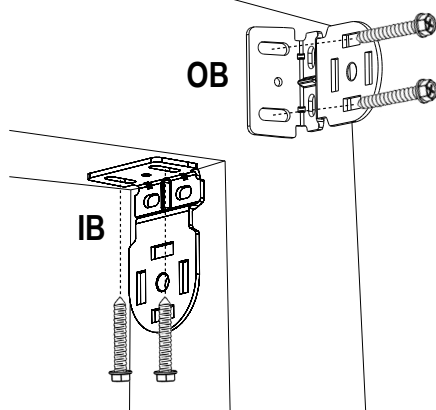
### Deco Fascia



**Important:** Prior to installing the shade, pair the remote using the instructions included with the remote. Do not set the upper and lower limits until the shade is installed.

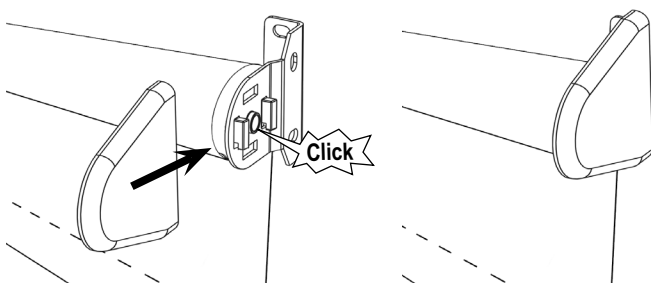
## Motorized with Open Roll

### 1. Install the Brackets

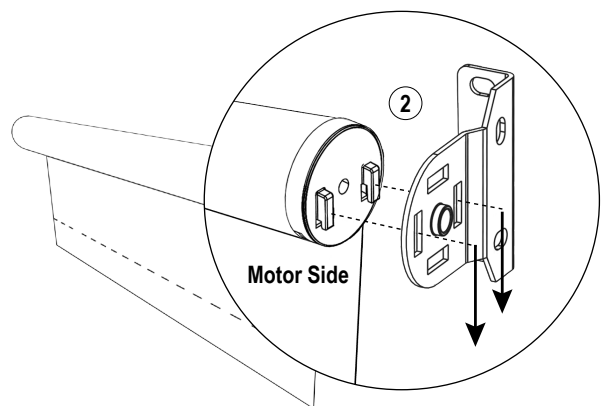
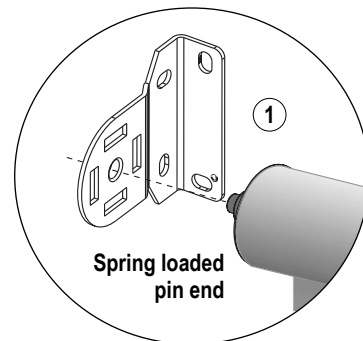


Secure the roller shade installation brackets with the supplied screws. If shade was ordered as outside mount (OB), attach the supplied screw covers on to the bracket for a finished look.

### 3. Install the Bracket Covers (if applicable)



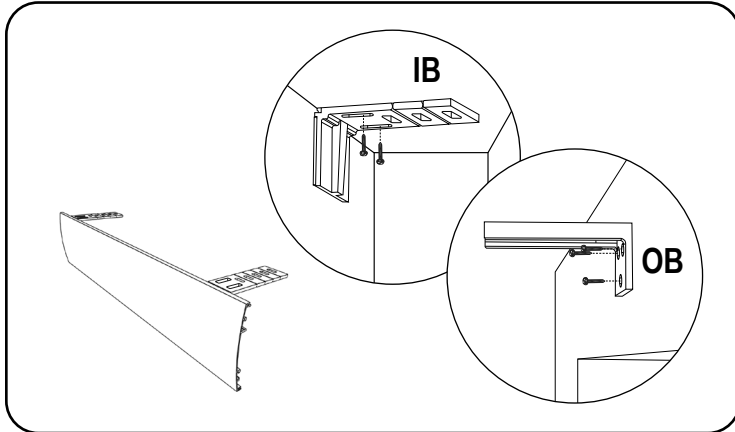
### 2. Install the Shade



# INSTALLATION INSTRUCTIONS

## Motorized with Deco Fascia

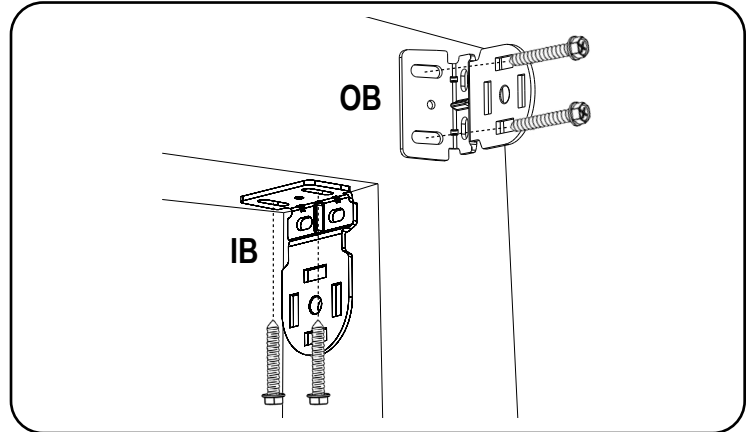
### 1. Install the Fascia Brackets



Outside mount (OB) requires a T-Bracket installation. Space brackets evenly.

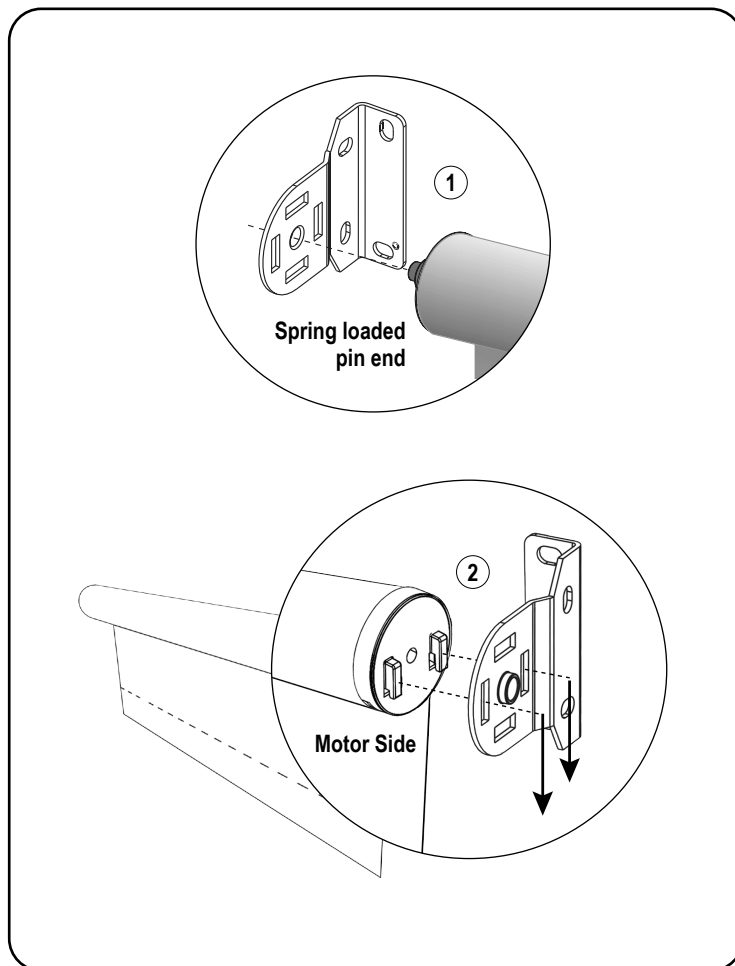
**Note:** Do not attach the Deco Fascia until the shade has been installed.

### 2. Install the Brackets

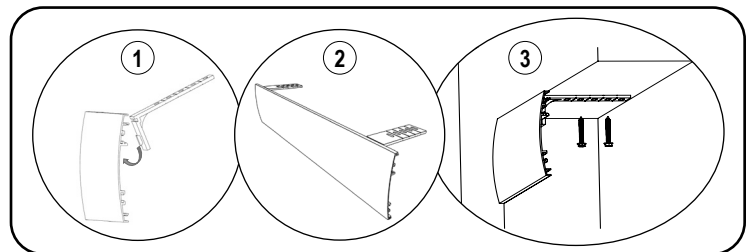


Secure the roller shade installation brackets with the supplied screws. If shade was ordered as outside mount (OB), attach the supplied screw covers on to the bracket for a finished look.

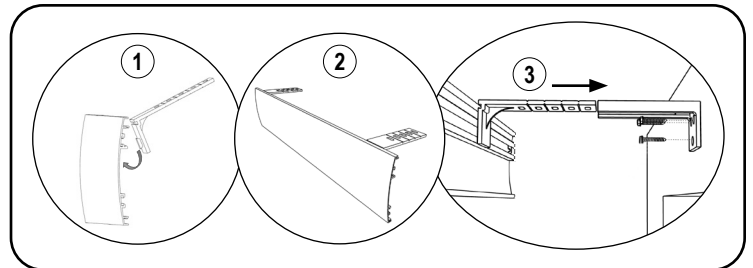
### 3. Install the Shade



### 4. Install the Deco Fascia

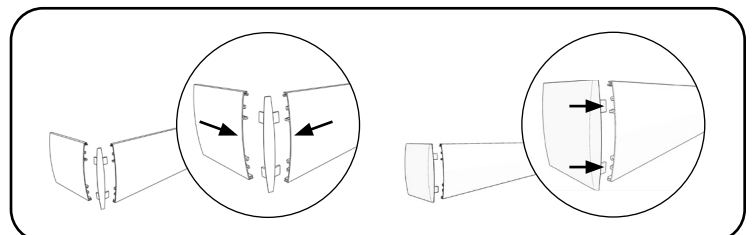


Inside Mount (IB)



Outside Mount (OB)

### 5. Install the Returns (Optional)



**Metal returns** (Outside mount only) include a plastic corner connector. **Plastic returns** (Inside mount with Outside Mounted fascia) snap on the end of the fascia.