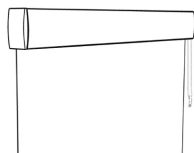
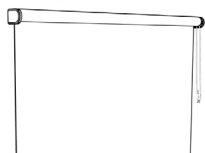
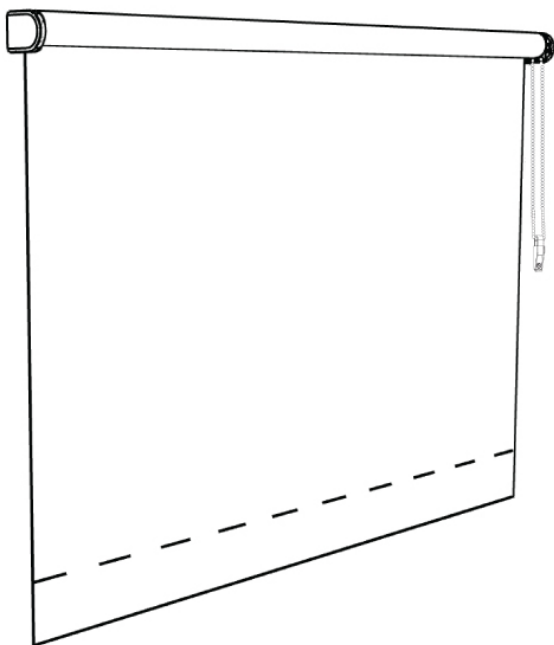




## LIFESTYLE ROLLER SHADES

### Clutch Control

### Installation Instructions



Section 1 - Clutch Control Open Roll  
Section 2 - Clutch Control with Deco Fascia

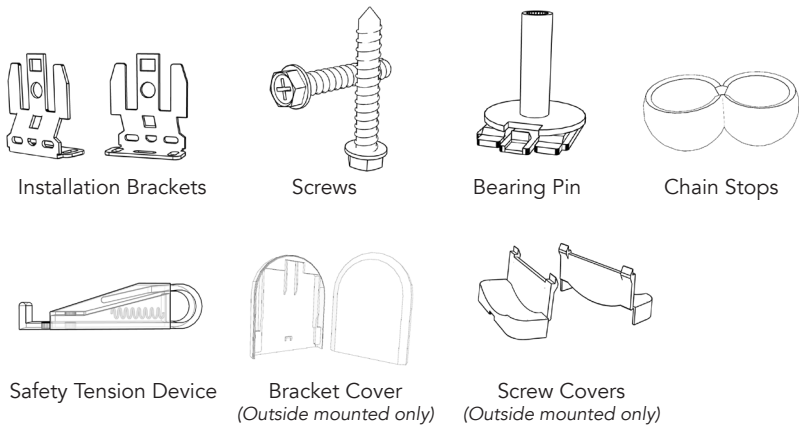
# GETTING STARTED

Make sure you have all of the parts and tools required to install your shades.

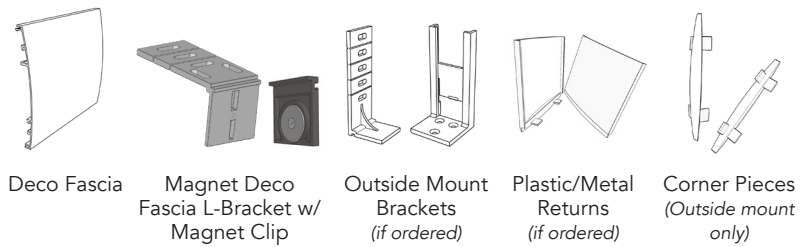
## Tools:

- Measuring Tape
- Power Drill
- #2 Phillips Screwdriver or
- 1/4" Hex Head

## General Parts to Install Your Shade:



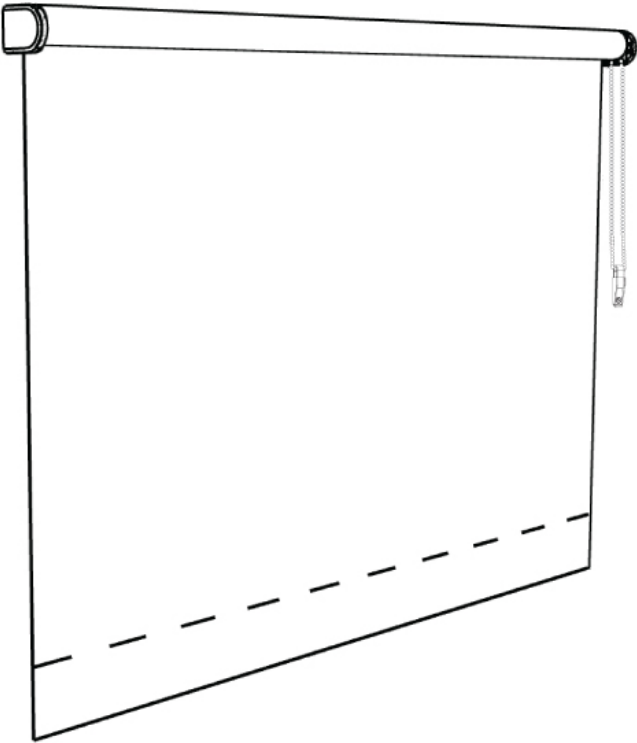
## Deco Fascia Installation Parts (supplied if Deco Fascia was ordered):



Note: Deco Fascia will arrive with Magnet Clip pre-attached to the backside

---

**SECTION 1**  
**CLUTCH CONTROL SHADE - OPEN ROLL**



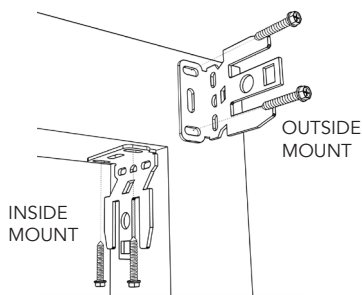
If your shades were ordered with Deco Fascia, proceed to Section 2

## STEP 1

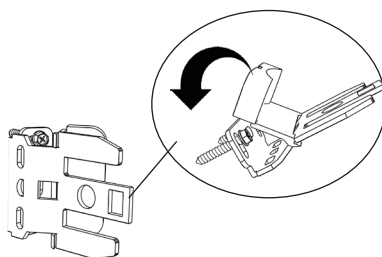
### INSTALLATION BRACKET PLACEMENT

Using the Drill, secure the roller shade installation brackets with the supplied screws (as shown).

Be sure to check that they are level.



If shade was ordered as Outside Mount, attach the supplied screw covers on to the bracket for a finished look.



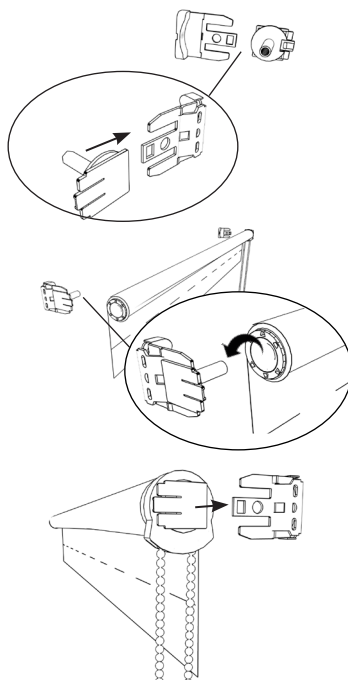
## STEP 2

### SHADE PLACEMENT

Once the brackets are secured and level, locate the Bearing Pin from the parts sent with your shade. Insert the Bearing Pin on to the non-chain side bracket (as shown). You should hear a click once it is securely installed.

Grab the roller shade and insert the non-chain side of the shade into the Bearing Pin (as shown)

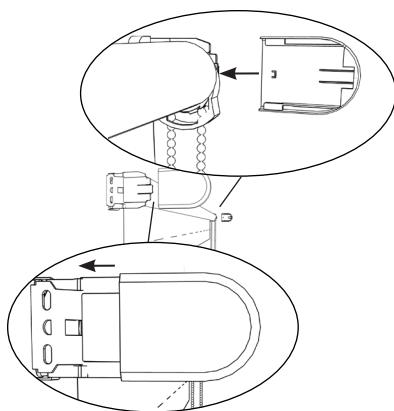
Insert the opposite end of the shade onto the bracket as shown.



### STEP 3

## ADDITIONAL ITEMS

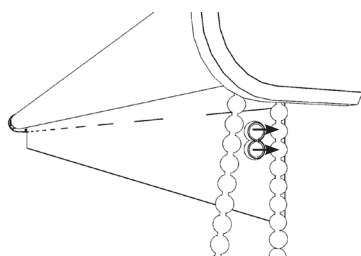
If your shade was ordered as Outside Mount, locate the bracket covers and install them onto the installation brackets as shown.



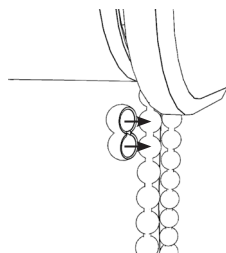
### STEP 4

## SET THE LIMITS

To set the Upper Limit of the shade, simply pull the back chain until the desired up position is reached. Snap the Chain Stop to the bead just below the clutch as shown.



To set the Lower Limit of the shade, simply pull the front chain until the desired lowered position is reached. Snap the Chain Stop to the bead just below the clutch as shown.

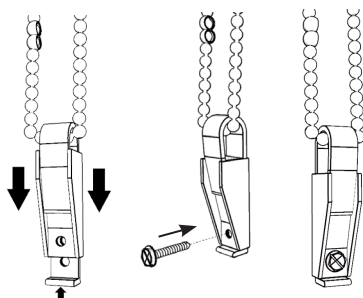


### STEP 5

## SAFETY TENSION DEVICE

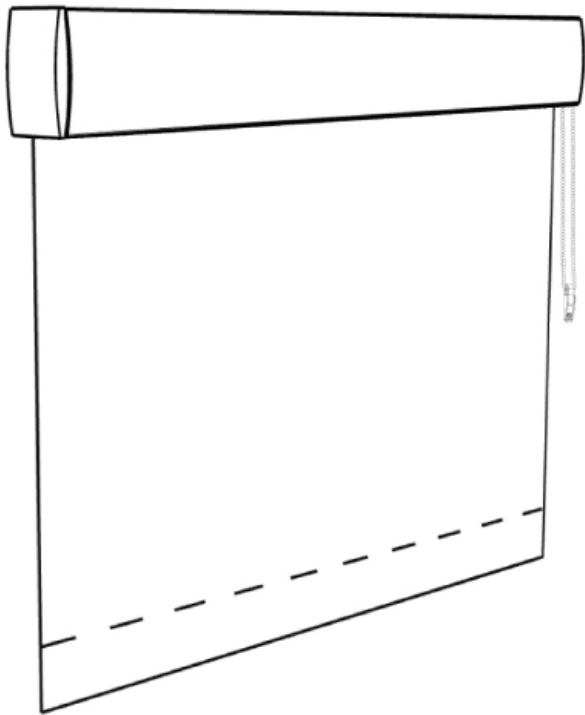
Your roller shade was produced with an ANSI compliant safety tension device attached to the bead chain. This device must be securely mounted before the shade will operate properly.

- Slide the device to the bottom of the bead chain.
- Pull the device down until the bead chain is fully tensioned.
- Mark the screw hole location and secure in place.



SECTION 2

CLUTCH CONTROL SHADE - WITH DECO FASCIA



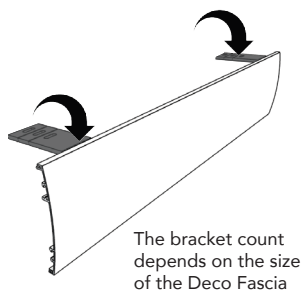
If your shades were ordered Open Roll, refer back to Section 1

## STEP 1

# DECO FASCIA BRACKET INSTALLATION

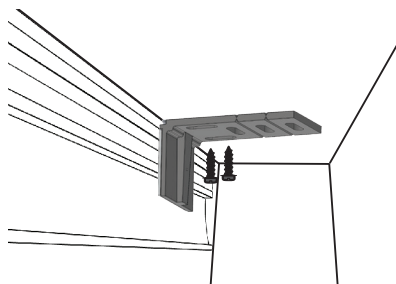
## INSIDE MOUNT

*(Typical installation)*



Locate the deco fascia L-brackets and attach them to the magnet clips located on the backside of the deco fascia.

The magnet clips arrive preattached and evenly spaced but can be adjusted if they have shifted during shipping.



Place the deco fascia in the opening positioning it so it is flush with the frontside of the window frame.

Using a drill, secure the deco fascia L-brackets with the supplied screws.

Be sure to check that they are level.

Remove the deco fascia from the opening and move on to shade bracket installation.

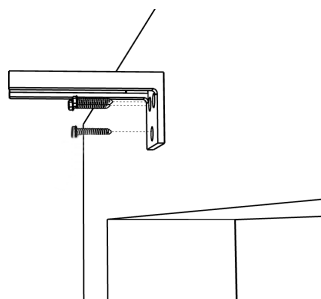
## OUTSIDE MOUNT

*(Requires T-Bracket Installation)*

Using the magnet clips attached to the backside of the deco fascia as your guide, mark where the magnet deco fascia T-bracket will need to be installed.

Using a drill secure the white plastic outside mount T-bracket (shown) to the opening. Be sure to check that they are level.

Move on to shade bracket installation.



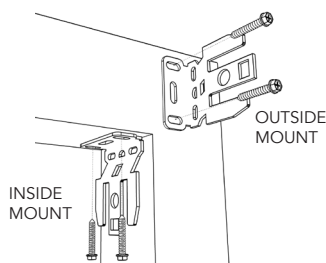
## STEP 2

### SHADE BRACKET INSTALLATION

Using the Drill, secure the roller shade installation brackets with the supplied screws (as shown).

Be sure to check that they are level.

If shade was ordered as Outside Mount, attach the screw covers on to the bracket for a finished look.



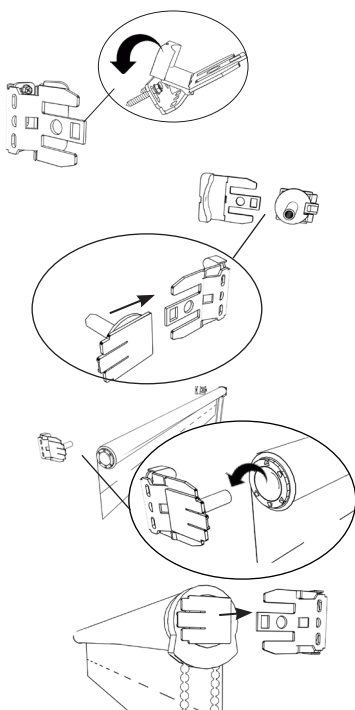
## STEP 3

### SHADE PLACEMENT

Once the brackets are secured and level, locate the Bearing Pin from the parts sent with your shade. Insert the Bearing Pin on to the non-chain side bracket (as shown). You should hear a click once it is securely installed.

Grab the roller shade and insert the non-chain side of the shade into the Bearing Pin (as shown).

Insert the opposite end of the shade onto the bracket as shown.

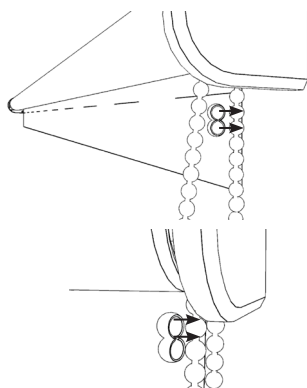


## STEP 4

### SET THE LIMITS

To set the Upper Limit of the shade, pull the back chain until the desired up position is reached. Snap the Chain Stop to the bead just below the clutch as shown.

To set the Lower Limit of the shade, pull the front chain until the desired lowered position is reached. Snap the Chain Stop to the bead just below the clutch as shown.



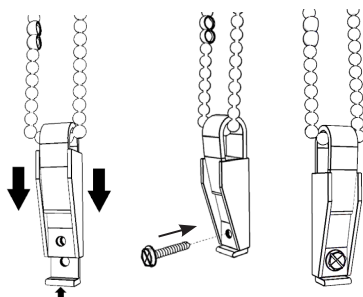


## STEP 5

### SAFETY TENSION DEVICE

Your roller shade was produced with an ANSI compliant safety tension device attached to the bead chain. This device must be securely mounted before the shade will operate properly.

- Slide the device to the bottom of the bead chain.
- Pull the device down until the bead chain is fully tensioned.
- Mark the screw hole location and secure in place.

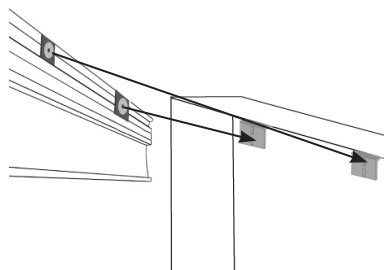


## STEP 6

### DECO FASCIA INSTALLATION

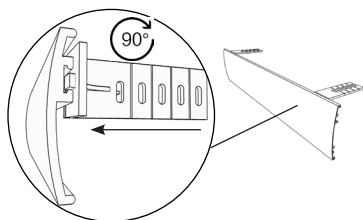
#### INSIDE MOUNT

Re-attach the deco fascia onto the magnet catch plate on the already installed. Adjust for light gaps if needed.



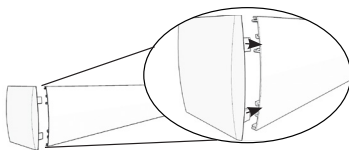
#### OUTSIDE MOUNT (if ordered)

Use the white plastic L-Bracket (shown) and insert at the top of the fascia (as shown). Push in lightly to turn the Installation Bracket on a 90° angle until is secured (facing up as shown). Slide the L bracket on to the already installed T-Bracket.



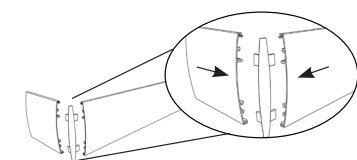
#### OUTSIDE MOUNT (if ordered)

Attach the return with the supplied connector.



Plastic return installation

- Plastic returns simply snap on the end of the fascia (inside mount shade with outside mounted fascia)
- Metal returns will include a plastic corner connector (outside mount only)



Metal return installation

---

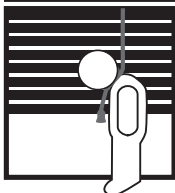
## TROUBLESHOOTING

Shade is rolling up on tube unevenly or tracks:

If you notice the material winds unevenly and begins to track or telescope to one side check to ensure that the shade is level. If the shade is not level, remove it from the mounting brackets and shim or reinstall the brackets, as necessary.

**IMPORTANT NOTE:** Operating a shade that is not level will result in damage to the material. Damage caused by operating an unlevel shade is not covered under our normal warranty.

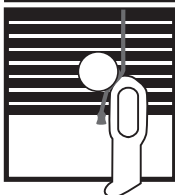
## **⚠ WARNING**



### **Window Blind Cord Can STRANGLE Your Child**

To prevent strangulation, purchase  
cordless products or products with  
inaccessible cords

## **⚠ ADVERTENCIA**



La cuerda ciega de la ventana  
puede **ESTRANGULAR** su niño  
Para evitar el estrangulamiento, compre  
alternativas inalámbricas o productos  
con cables inaccesibles

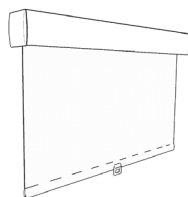
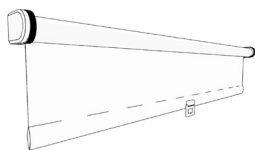
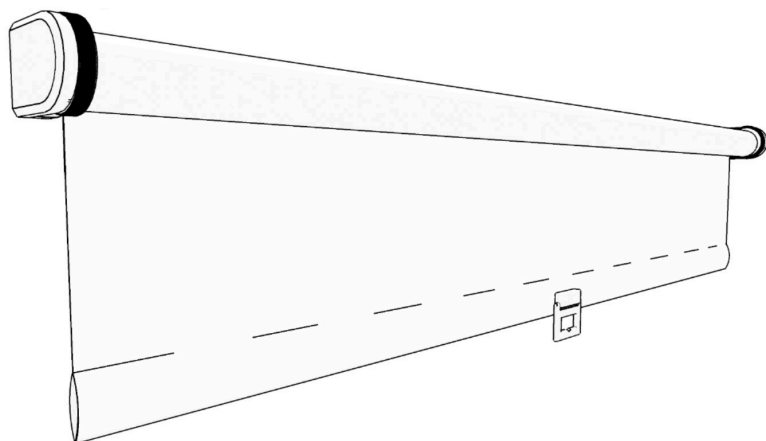




## LIFESTYLE ROLLER SHADES

### Cordless Operated Shade

### Installation Instructions



Section 1 - Cordless Operated Open Roll  
Section 2 - Cordless Operated with Deco Fascia

# GETTING STARTED

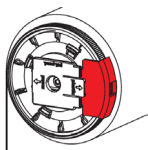
Make sure you have all of the parts and tools required to install your shades.

Tools:

- Measuring Tape
- Power Drill
- #2 Phillips Screwdriver or
- 1/4" Hex Head



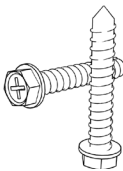
General Parts to Install Your Shade:



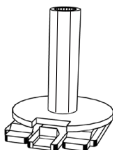
DO NOT REMOVE  
Red Clip



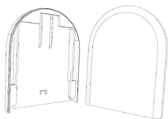
Installation Brackets



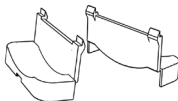
Screws



Bearing Pin (Hex)



Bracket Cover  
(Outside mounted only)

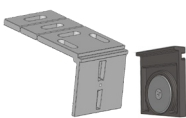


Screw Covers  
(Outside mounted only)

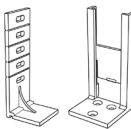
Deco Fascia Installation Parts (supplied if Deco Fascia was ordered):



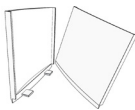
Deco Fascia



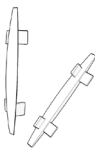
Magnet Deco  
Fascia L-Bracket w/  
Magnet Clip



Outside Mount  
Brackets  
(if ordered)



Plastic/Metal  
Returns  
(if ordered)



Corner Pieces  
(Outside mount  
only)

Note: Deco Fascia will arrive with Magnet Clip pre-attached to the backside

Contoured Valance Installation Parts (supplied only if optional items were ordered):



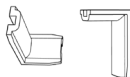
Contoured  
Valance



Installation Brackets



Outside Mount  
Brackets (if ordered)

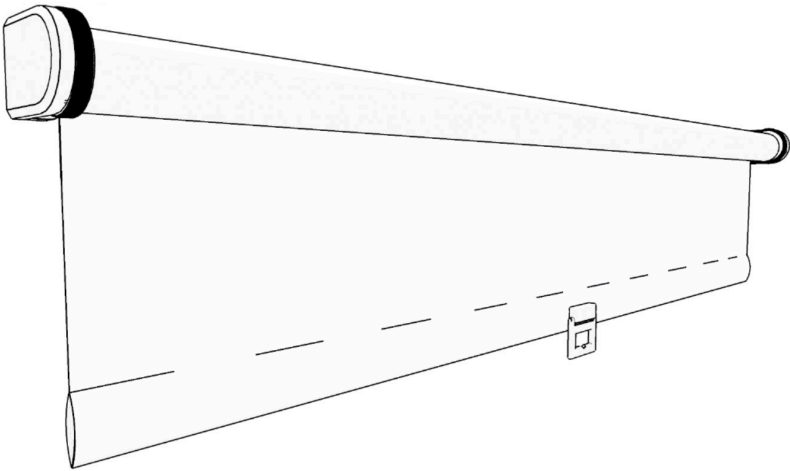


Corner Connectors  
(if ordered)

---

**SECTION 1**

**CORDLESS OPERATED SHADE - OPEN ROLL**



If your shades were ordered with Deco Fascia, proceed to Section 2

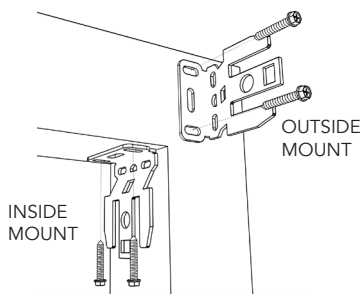
## STEP 1

### INSTALLATION BRACKET PLACEMENT

Using the drill, secure the roller shade installation brackets with the supplied screws (as shown).

Be sure to check that they are level.

If shade was ordered as outside mount, attach the supplied screw covers on to the bracket for a finished look.



## STEP 2

### SHADE PLACEMENT

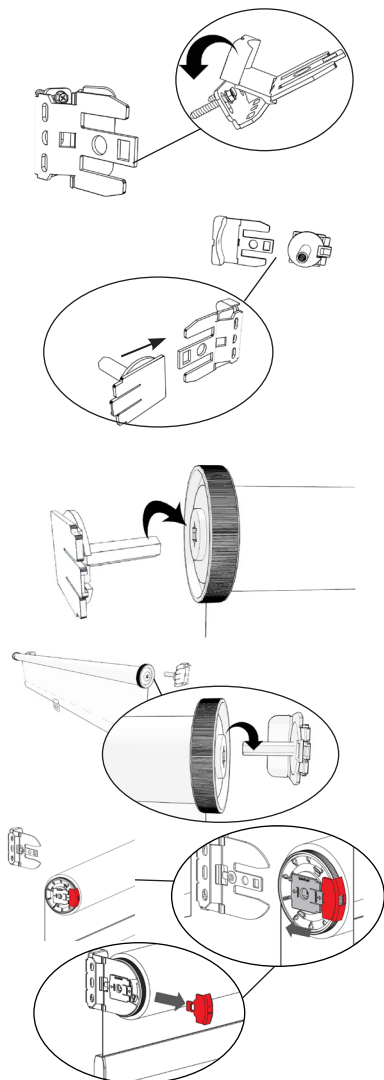
Once the brackets are secured and level, locate the bearing pin from the parts sent with your shade. Insert the bearing pin on to the right side installation bracket (as shown). You should hear a click once it is securely installed.

Grab the second bearing pin and insert onto left side clutch opening (as shown).

Grab the roller shade and insert the right side of the shade into the bearing pin (as shown)

Insert the opposite end of the shade onto the bracket as shown.

**THE RED PLASTIC TENSION HOLDER WILL DISENGAGE ONCE THE BRACKET HAS BEEN INSTALLED.**

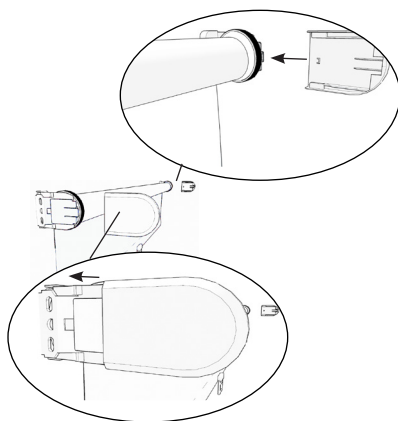




### STEP 3

## ADDITIONAL ITEMS

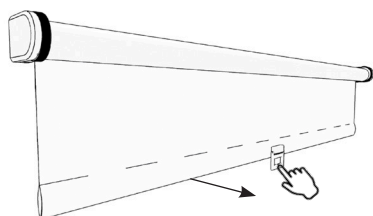
If your shade was ordered as outside mount, locate the bracket covers and install them onto the installation brackets as shown.



### STEP 4

## OPERATING INSTRUCTIONS

Pull the shade from the bottom handle and let go to lock it into the desired length.

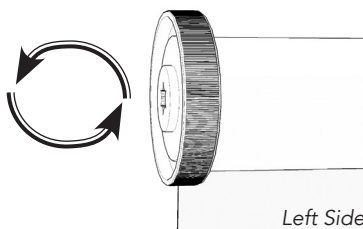


### STEP 5

## ADJUSTING TENSION

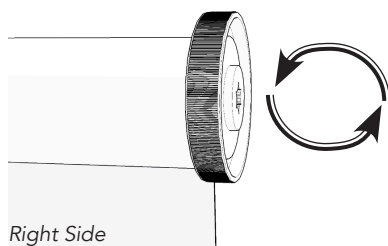
Your cordless shade was produced with the limits already set. If you need to change or adjust this at any time, please follow the steps below:

To lower tension or speed, turn the left side wheel towards the back of the shade.



To add tension or speed, turn the left side wheel towards the front of the shade while holding the bottomrail

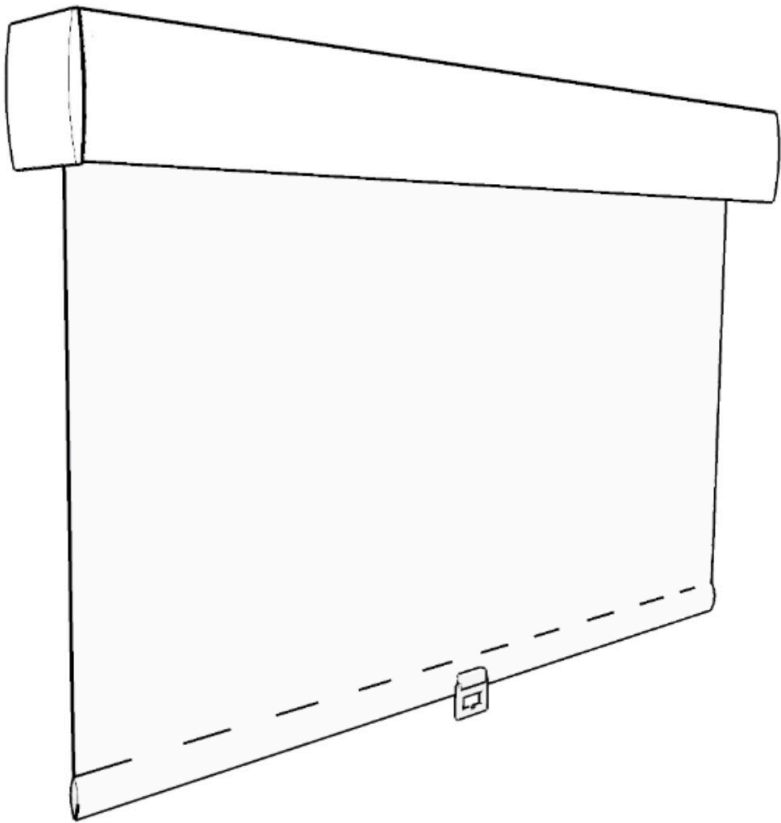
To shorten the length of the shade, turn the right side wheel towards the front of the shade.



To lengthed the shade, turn the right side wheel towards the back of the shade.

---

**SECTION 2**  
**CORDLESS OPERATED SHADE - WITH DECO FASCIA**



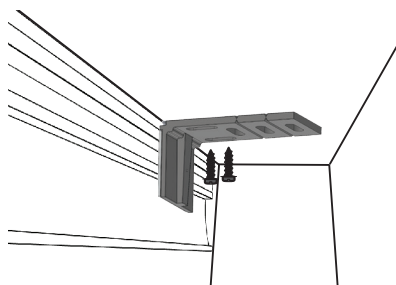
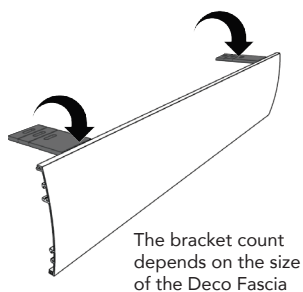
If your shades were ordered Open Roll, refer back to Section 1

## STEP 1

# DECO FASCIA BRACKET INSTALLATION

## INSIDE MOUNT

*(Typical installation)*



Locate the deco fascia L-brackets and attach them to the magnet clips located on the backside of the deco fascia.

The magnet clips arrive preattached and evenly spaced but can be adjusted if they have shifted during shipping.

Place the deco fascia in the opening positioning it so it is flush with the frontside of the window frame.

Using a drill, secure the deco fascia L-brackets with the supplied screws.

Be sure to check that they are level.

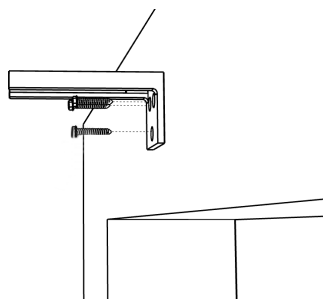
Remove the deco fascia from the opening and move on to shade bracket installation.

## OUTSIDE MOUNT

*(Requires T-Bracket Installation)*

Using the magnet clips attached to the backside of the deco fascia as your guide, mark where the magnet deco fascia T-bracket will need to be installed.

Using a drill secure the white plastic outside mount T-bracket (shown) to the opening. Be sure to check that they are level.



Move on to shade bracket installation.

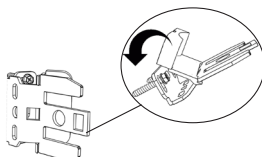
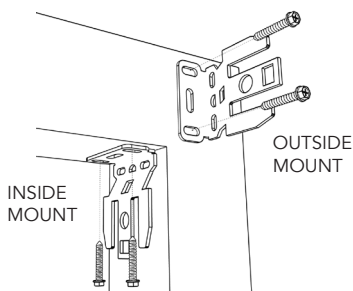
## STEP 2

### INSTALLATION BRACKET PLACEMENT

Using the drill, secure the roller shade installation brackets with the supplied screws (as shown).

Be sure to check that they are level.

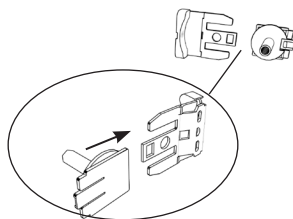
If shade was ordered as Outside Mount, attach the supplied screw covers on to the bracket for a finished look.



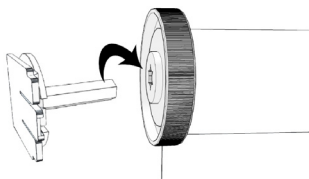
## STEP 3

### SHADE PLACEMENT

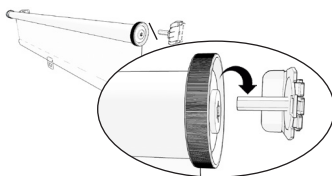
Once the brackets are secured and level, locate the bearing pin from the parts sent with your shade. Insert the bearing pin on to the right side installation bracket (as shown). You should hear a click once it is securely installed.



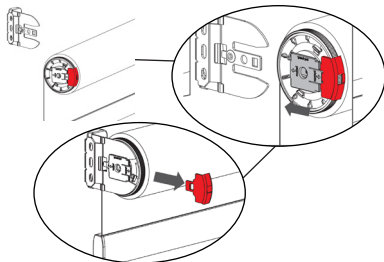
Grab the second bearing pin and insert onto left side clutch opening (as shown).



Grab the roller shade and insert the right side of the shade into the bearing pin (as shown).



Insert the opposite end of the shade onto the bracket as shown.

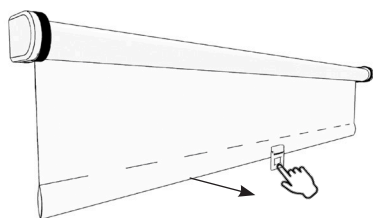


**THE RED PLASTIC TENSION HOLDER WILL DISENGAGE ONCE THE BRACKET HAS BEEN INSTALLED.**

#### STEP 4

### OPERATING INSTRUCTIONS

Pull the shade from the bottom handle and let go to lock it into the desired length.

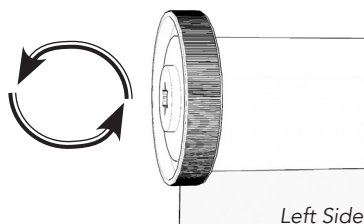


#### STEP 5

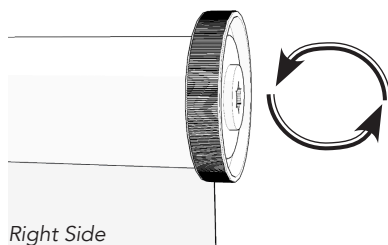
### ADJUSTING TENSION

Your cordless shade was produced with the limits already set. If you need to change or adjust this at any time, please follow the steps below:

To lower tension or speed, turn the left side wheel towards the back of the shade.



To add tension or speed, turn the left side wheel towards the front of the shade while holding the bottomrail



To shorten the length of the shade, turn the right side wheel towards the front of the shade.

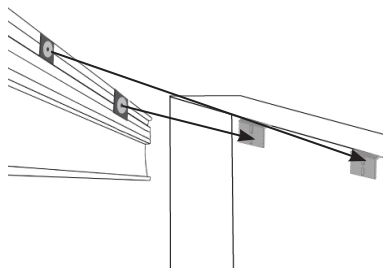
To lengthed the shade, turn the right side wheel towards the back of the shade.

## STEP 6

# DECO FASCIA INSTALLATION

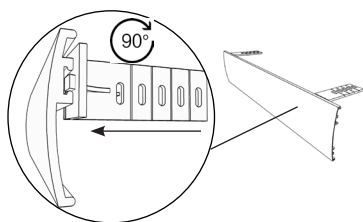
### INSIDE MOUNT

Inside mounted deco fascia can be installed by placing the magnet receiver (already attached) onto the magnet catch plates on the front of the installed brackets.



### OUTSIDE MOUNT *(if ordered)*

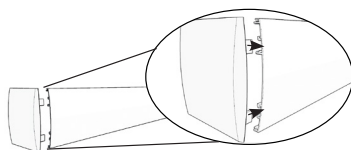
Use the white plastic L-bracket (shown) and insert at the top of the fascia (as shown). Push in lightly to turn the installation bracket on a 90° angle until it is secured (facing up as shown). Slide the L-bracket on to the already installed T-bracket.



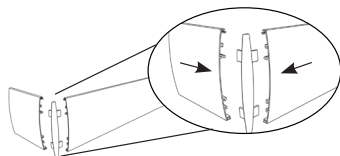
### OUTSIDE MOUNT *(if ordered)*

Attach the return with the supplied connector.

- Plastic returns simply snap on the end of the fascia  
*(inside mount shade with outside mounted fascia)*
- Metal returns will include a plastic corner connector  
*(outside mount only)*



Plastic return installation



Metal return installation

---

## TROUBLESHOOTING

Shade is rolling up on tube unevenly or tracks:

If you notice the material winds unevenly and begins to track or telescope to one side check to ensure that the shade is level. If the shade is not level, remove it from the mounting brackets and shim or reinstall the brackets, as necessary.

**IMPORTANT NOTE:** Operating a shade that is not level will result in damage to the material. Damage caused by operating an unlevel shade is not covered under our normal warranty.



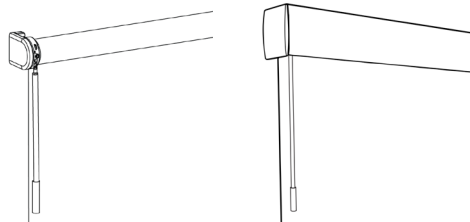
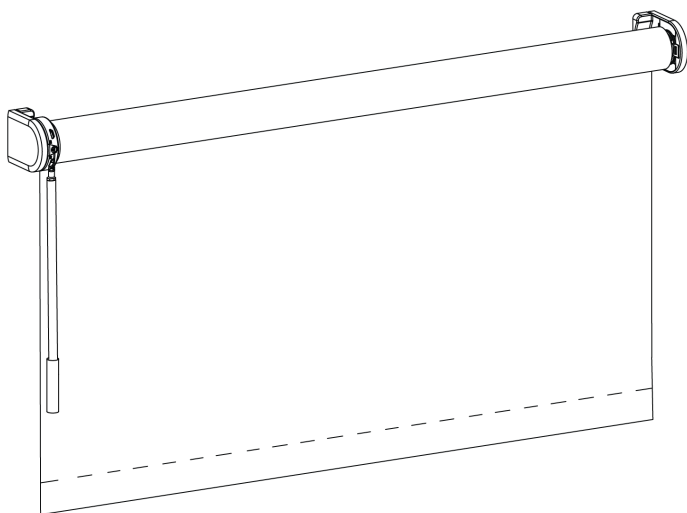




## LIFESTYLE ROLLER SHADES

### Wand Motor Operated

### Installation Instructions



Section 1 - Wand Motor Operated Open Roll  
Section 2 - Wand Motor Operated with Deco Fascia

---

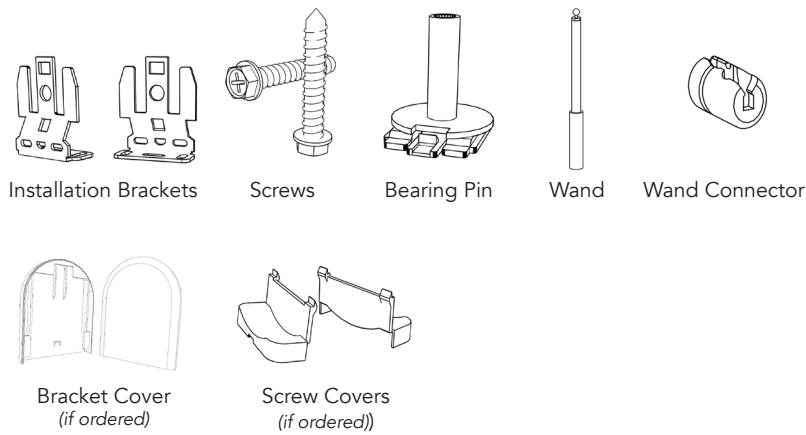
# GETTING STARTED

Make sure you have all of the parts and tools required to install your shades.

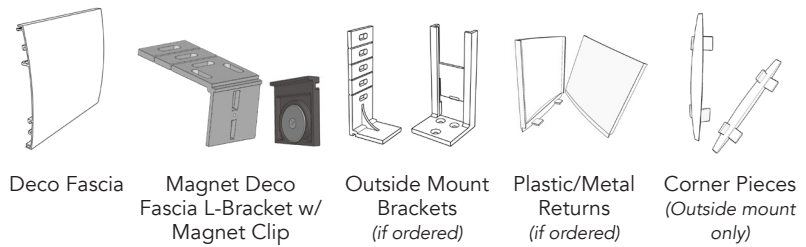
**Tools:**

- Measuring Tape
- Power Drill
- #2 Phillips Screwdriver or
- 1/4" Hex Head

**General Parts to Install Your Shade:**



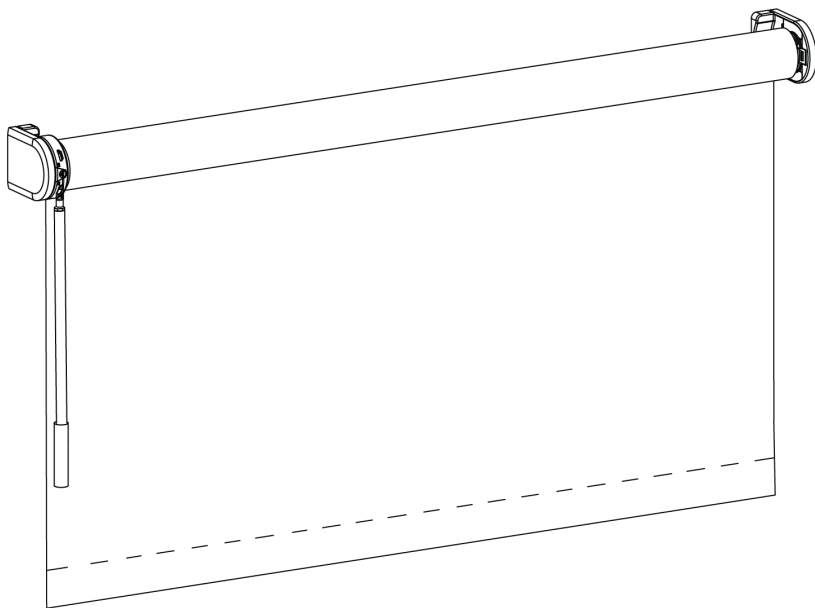
**Deco Fascia Installation Parts (supplied if Deco Fascia was ordered):**



**Note:** Deco Fascia will arrive with Magnet Clip pre-attached to the backside

---

**SECTION 1**  
**WAND MOTOR OPERATED SHADE - OPEN ROLL**



If your shades were ordered with Deco Fascia, proceed to Section 2

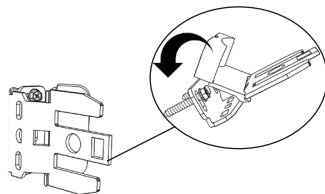
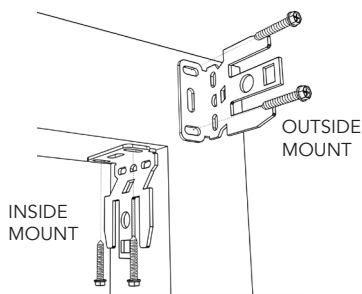
## STEP 1

### INSTALLATION BRACKET PLACEMENT

Using the Drill, secure the roller shade installation brackets with the supplied screws (as shown).

Be sure to check that they are level.

If shade was ordered as Outside Mount, attach the supplied screw covers on to the bracket for a finished look.



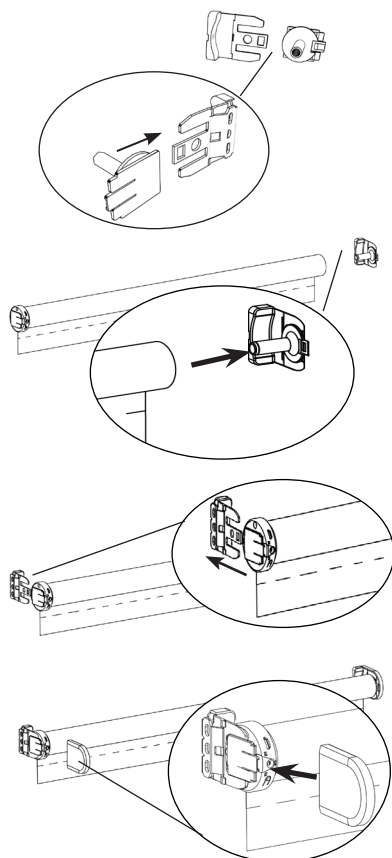
## STEP 2

### SHADE PLACEMENT

Once the brackets are secured and level, locate the Bearing Pin from the parts sent with your shade. Insert the Bearing Pin on to the non-control side installation bracket (as shown). You should hear a click once it is securely installed.

Grab the roller shade and insert the non-control side of the shade into the Bearing Pin (as shown).

Insert the opposite end of the shade onto the installation bracket (as shown).



## STEP 3

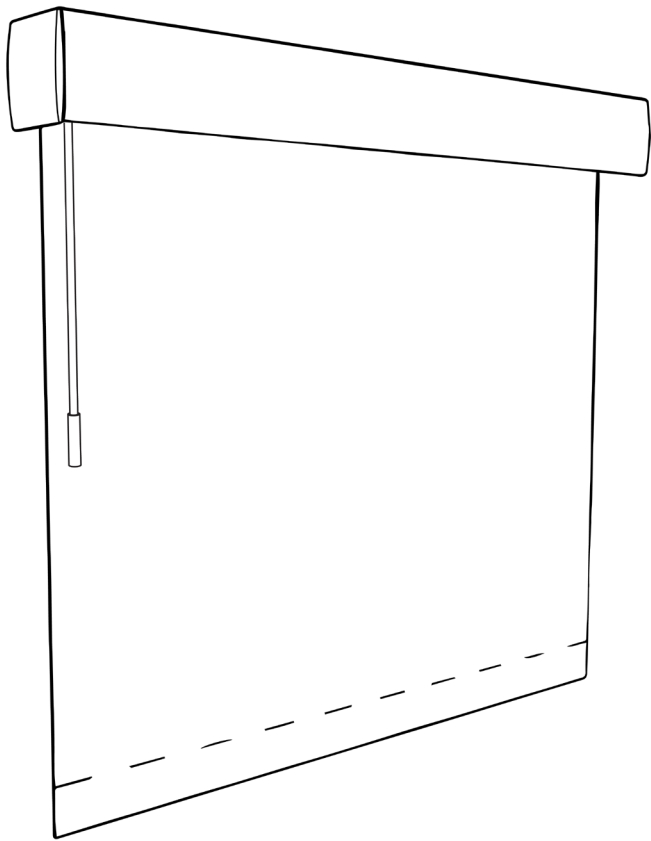
### ADDITIONAL ITEMS

If your shade was ordered as Outside Mount, locate the bracket covers and install them onto the installation brackets as shown.

Proceed to Programming Instructions at the end of this guide

SECTION 2

WAND MOTOR OPERATED SHADE  
WITH DECO FASCIA



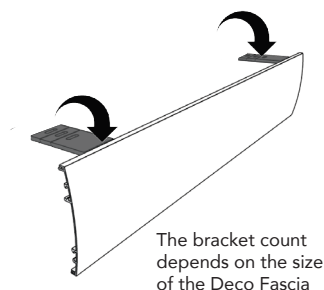
If your shades were ordered Open Roll, refer back to Section 1

## STEP 1

# DECO FASCIA BRACKET INSTALLATION

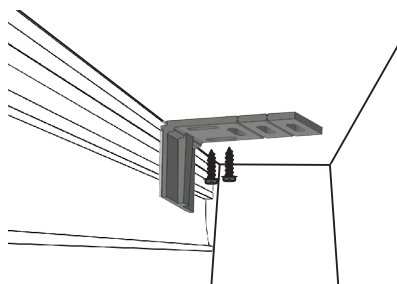
## INSIDE MOUNT

*(Typical installation)*



Locate the deco fascia L-brackets and attach them to the magnet clips located on the backside of the deco fascia.

The magnet clips arrive preattached and evenly spaced but can be adjusted if they have shifted during shipping.



Place the deco fascia in the opening positioning it so it is flush with the frontside of the window frame.

Using a drill, secure the deco fascia L-brackets with the supplied screws.

Be sure to check that they are level.

Remove the deco fascia from the opening and move on to shade bracket installation.

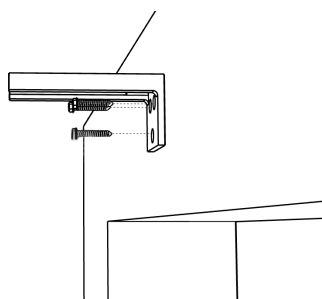
## OUTSIDE MOUNT

*(Requires T-Bracket Installation)*

Using the magnet clips attached to the backside of the deco fascia as your guide, mark where the magnet deco fascia T-bracket will need to be installed.

Using a drill secure the white plastic outside mount T-bracket (shown) to the opening. Be sure to check that they are level.

Move on to shade bracket installation.



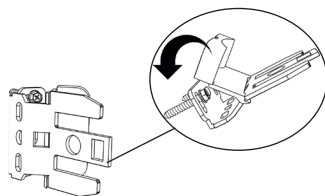
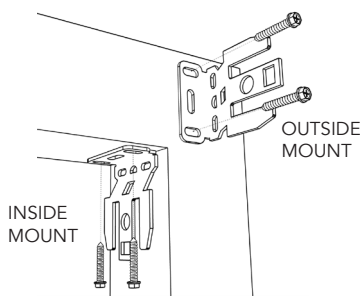
## STEP 2

### INSTALLATION BRACKET PLACEMENT

Using the drill, secure the roller shade installation brackets with the supplied screws (as shown).

Be sure to check that they are level.

If shade was ordered as Outside Mount, attach the supplied screw covers on to the bracket for a finished look.



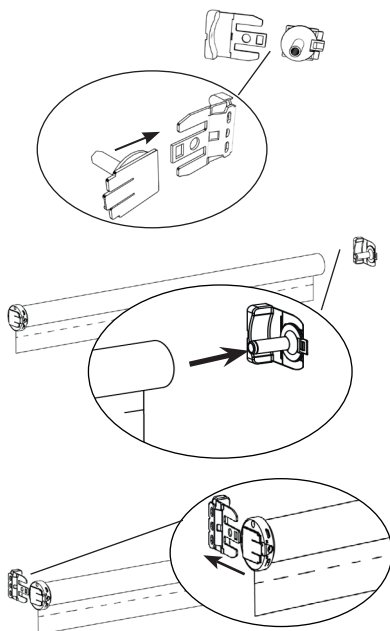
## STEP 3

### SHADE PLACEMENT

Once the brackets are secured and level, locate the Bearing Pin from the parts sent with your shade. Insert the Bearing Pin on to the non-control side installation bracket (as shown). You should hear a click once it is securely installed.

Grab the roller shade and insert the non-control side of the shade into the Bearing Pin (as shown).

Insert the opposite end of the shade onto the installation bracket (as shown).

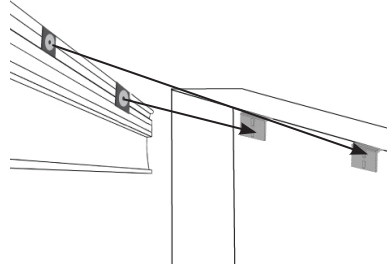


#### STEP 4

## DECO FASCIA INSTALLATION

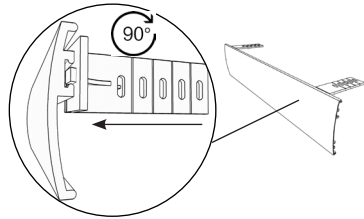
### INSIDE MOUNT

Inside mounted deco fascia can be installed by placing the magnet receiver (already attached) onto the magnet catch plates on the front of the installed brackets.



### OUTSIDE MOUNT *(if ordered)*

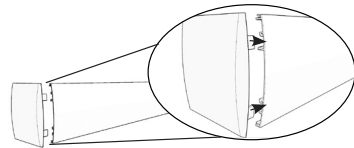
Use the white plastic L-bracket (shown) and insert at the top of the fascia (as shown). Push in lightly to turn the installation bracket on a 90° angle until it is secured (facing up as shown). Slide the L-bracket on to the already installed T-bracket.



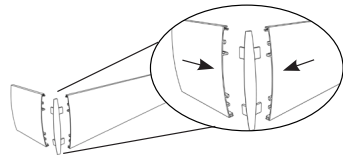
### OUTSIDE MOUNT *(if ordered)*

Attach the return with the supplied connector.

- Plastic returns simply snap on the end of the fascia  
*(inside mount shade with outside mounted fascia)*
- Metal returns will include a plastic corner connector  
*(outside mount only)*



Plastic return installation



Metal return installation



---

## PROGRAMMING INSTRUCTIONS

Your motorized shade has come to you with limit sets. If you need to change/adjust the limits, please use the following instructions.

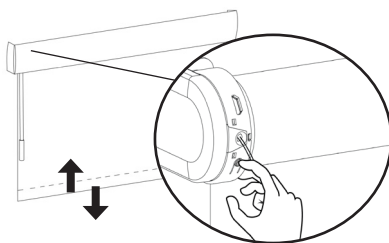
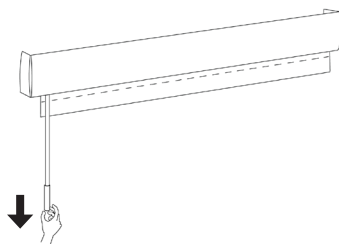
### SETTING LOWER LIMIT:

Pull and hold the wand until the shade has reached the bottom limit. If the shade moves in the opposite direction release the wand and pull and hold again.

Adjust until the desired bottom limit has been reached.

Save the position by pushing the button until the shade moves up and down.

THE LOWER LIMIT IS NOW SET.  
*Continue to next page.*



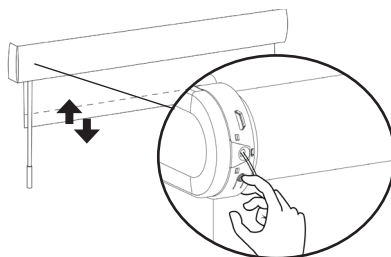
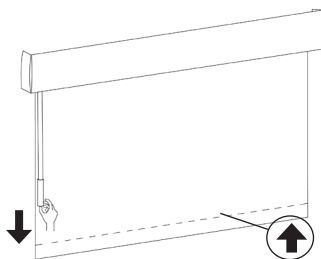
### SETTING UPPER LIMIT:

Pull and hold the wand until the shade has reached the upper limit. If the shade moves in the opposite direction release the wand and pull and hold again.

Adjust until the desired upper limit has been reached.

Save the position by pushing the button until the shade moves up and down.

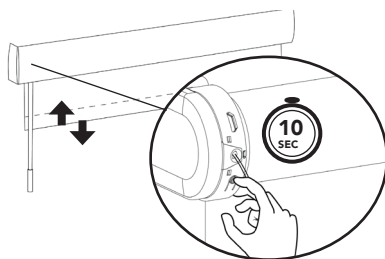
THE UPPER LIMIT IS NOW SET.



## DELETE END LIMITS:

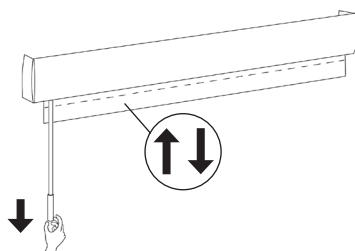
Hold the button for approximately 10 seconds, after 5 seconds the shade will move up and down. Keep pushing the button until the shade moves up and down again.

Repeat steps above to save new end limits.



## OPERATING INSTRUCTIONS

Pull the wand slightly to start or stop the shade.



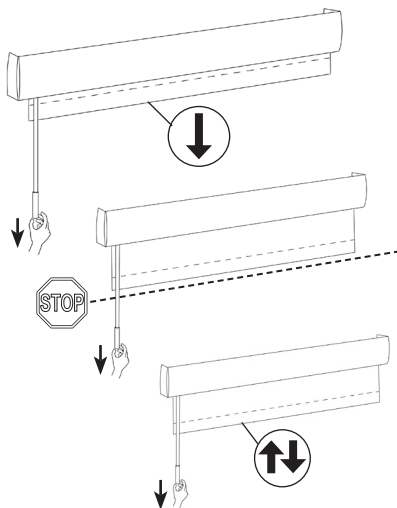
## OPTIONAL: FAVORITE POSITION

### SET THE FAVORITE POSITION

Pull the wand slightly to start or stop the shade.

Pull and hold the chain for approximately 7 seconds until the shade moves up and down.

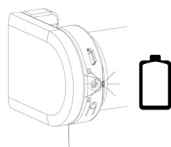
Go to any position other than the saved favorite position.



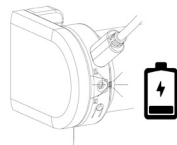
---

## RECHARGE BATTERY

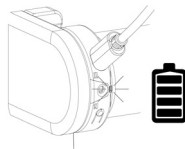
Blinking red during operation;  
Charge the battery.



Blinking green; Battery is charging.



Continuously green; Battery is fully  
charged.



## TROUBLESHOOTING

Shade is rolling up on tube unevenly or tracks:

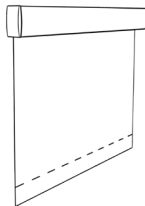
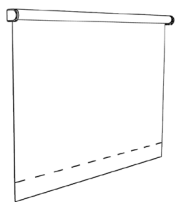
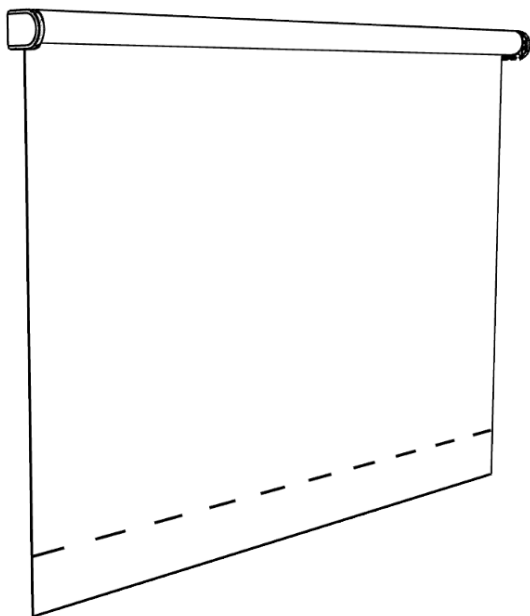
If you notice the material winds unevenly and begins to track or telescope to one side check to ensure that the shade is level. If the shade is not level, remove it from the mounting brackets and shim or reinstall the brackets, as necessary.

**IMPORTANT NOTE:** Operating a shade that is not level will result in damage to the material. Damage caused by operating an unlevel shade is not covered under our normal warranty.





LIFESTYLE ROLLER SHADES  
Motorized Operated  
Installation Instructions



Section 1 - Motorized Operated Open Roll  
Section 2 - Motorized Operated with Deco Fascia

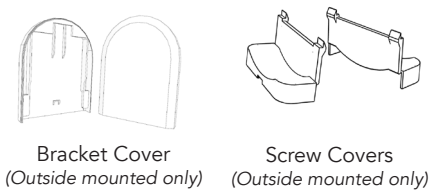
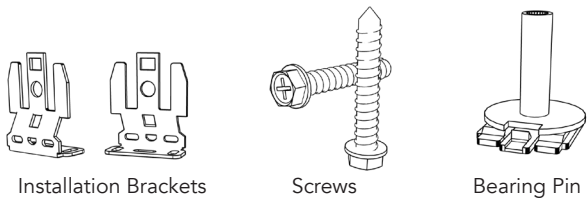
# GETTING STARTED

Make sure you have all of the parts and tools required to install your shades.

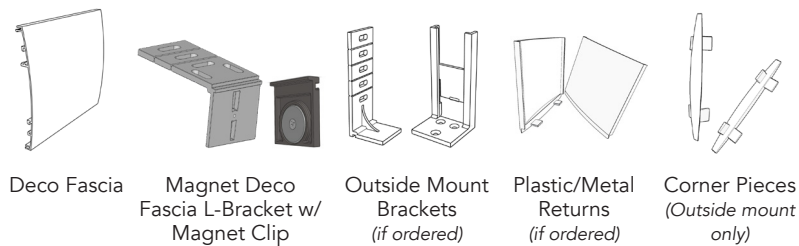
**Tools:**

- Measuring Tape
- Power Drill
- #2 Phillips Screwdriver or
- ¼" Hex Head

**General Parts to Install Your Shade:**

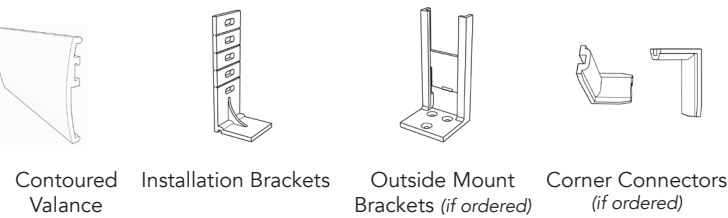


**Deco Fascia Installation Parts (supplied if Deco Fascia was ordered):**



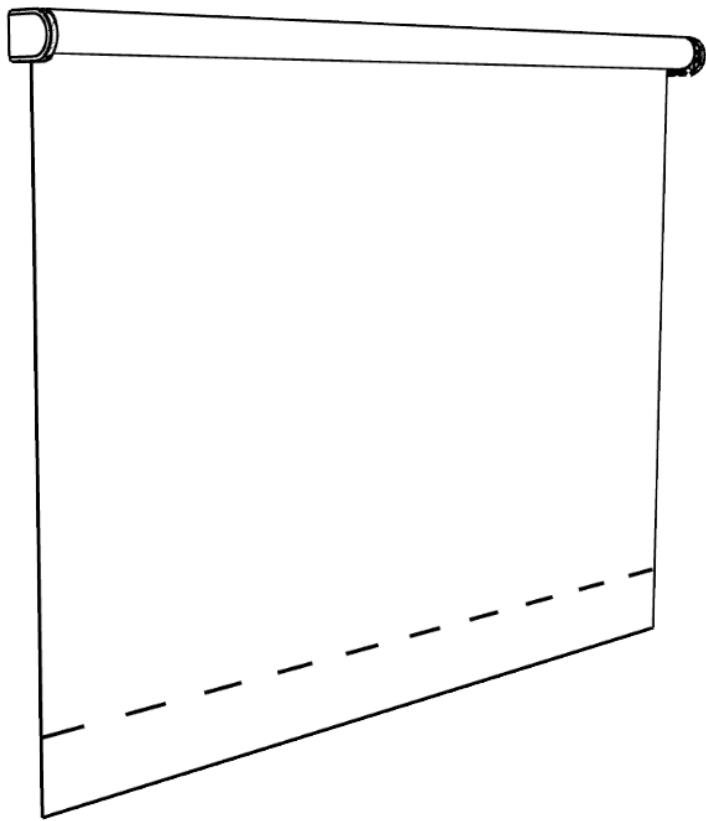
Note: Deco Fascia will arrive with Magnet Clip pre-attached to the backside

**Contoured Valance Installation Parts (supplied only if optional items were ordered):**



SECTION 1

MOTORIZED OPERATED - OPEN ROLL



If your shades were ordered with Deco Fascia, proceed to Section 2

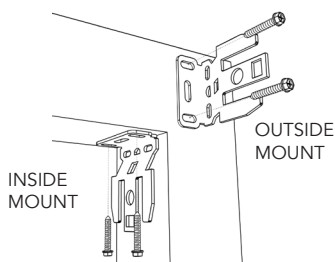
## STEP 1

# INSTALLATION BRACKET PLACEMENT

Using the Drill, secure the roller shade installation brackets with the supplied screws (as shown).

Be sure to check that they are level.

If shade was ordered as Outside Mount, attach the supplied screw covers on to the bracket for a finished look.



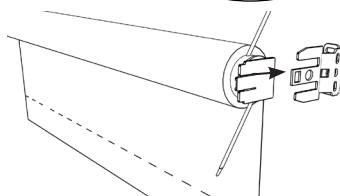
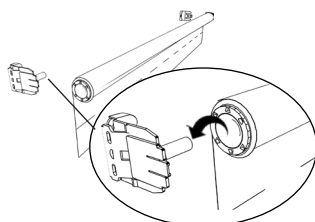
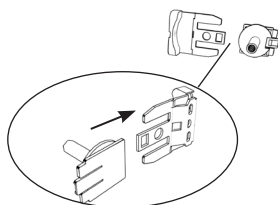
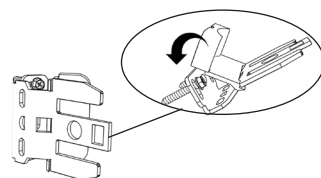
## STEP 2

# SHADE PLACEMENT

Once the brackets are secured and level, locate the Bearing Pin from the parts sent with your shade. Insert the Bearing Pin on to the left side bracket (as shown). You should hear a click once it is securely installed.

Grab the roller shade and insert the left side of the shade into the Bearing Pin (as shown).

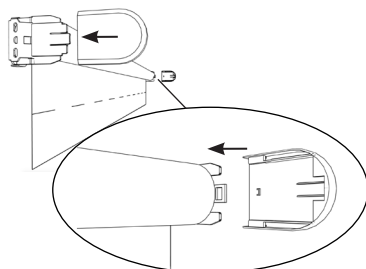
Insert the opposite end of the shade onto the bracket as shown.



## STEP 3

# ADDITIONAL ITEMS

If your shade was ordered as Outside Mount, locate the bracket covers and install them onto the installation brackets as shown.

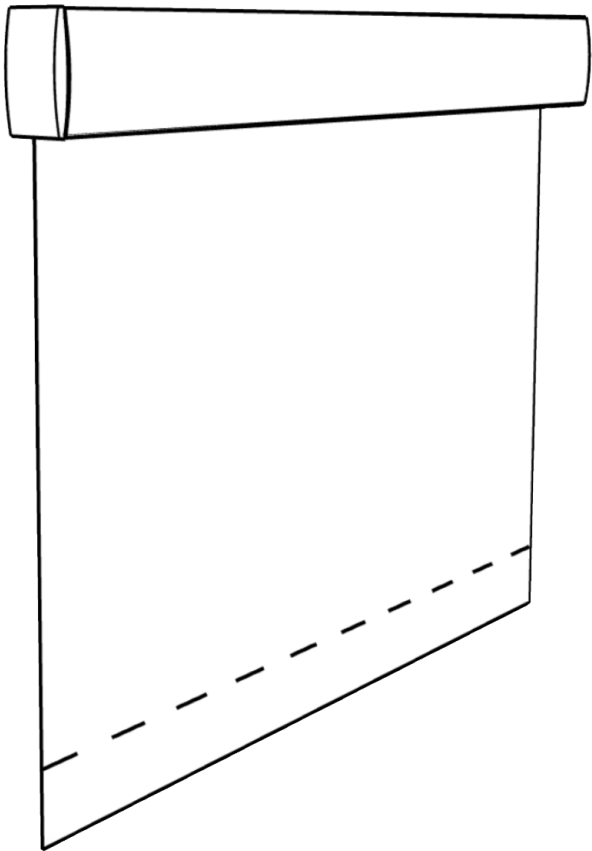


Proceed to Programming Instructions included with your order.  
QR codes to online guides can be found at the end of this guide.



SECTION 2

MOTORIZED OPERATED - WITH DECO FASCIA



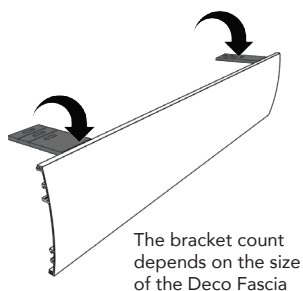
If your shades were ordered Open Roll, refer back to Section 1

## STEP 1

# DECO FASCIA BRACKET INSTALLATION

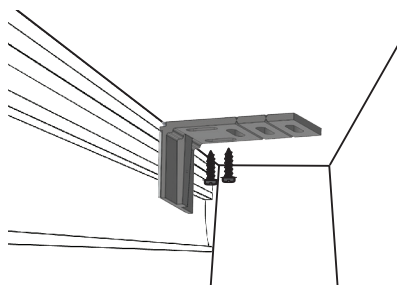
## INSIDE MOUNT

*(Typical installation)*



Locate the deco fascia L-brackets and attach them to the magnet clips located on the backside of the deco fascia.

The magnet clips arrive preattached and evenly spaced but can be adjusted if they have shifted during shipping.



Place the deco fascia in the opening positioning it so it is flush with the frontside of the window frame.

Using a drill, secure the deco fascia L-brackets with the supplied screws.

Be sure to check that they are level.

Remove the deco fascia from the opening and move on to shade bracket installation.

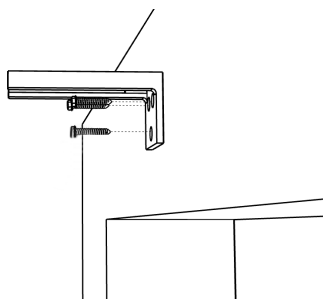
## OUTSIDE MOUNT

*(Requires T-Bracket Installation)*

Using the magnet clips attached to the backside of the deco fascia as your guide, mark where the magnet deco fascia T-bracket will need to be installed.

Using a drill secure the white plastic outside mount T-bracket (shown) to the opening. Be sure to check that they are level.

Move on to shade bracket installation.



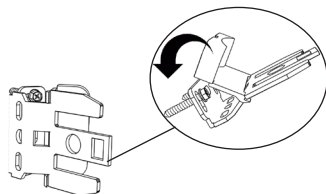
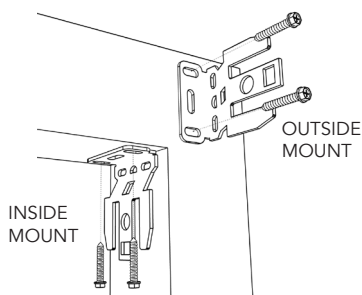
## STEP 2

### INSTALLATION BRACKET PLACEMENT

Using the drill, secure the roller shade installation brackets with the supplied screws (as shown).

Be sure to check that they are level.

If shade was ordered as Outside Mount, attach the supplied screw covers on to the bracket for a finished look.

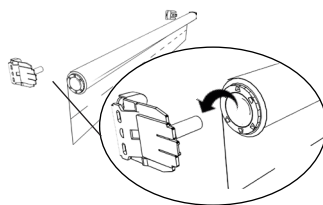
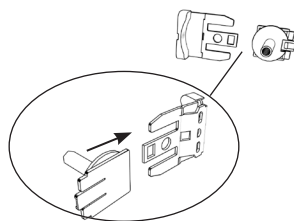


## STEP 3

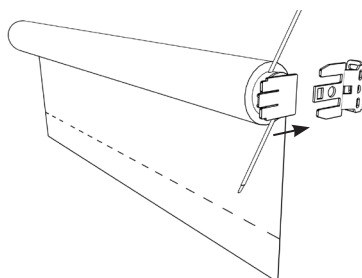
### SHADE PLACEMENT

Once the brackets are secured and level, locate the Bearing Pin from the parts sent with your shade. Insert the Bearing Pin on to the left side bracket (as shown). You should hear a click once it is securely installed.

Grab the roller shade and insert the left side of the shade into the Bearing Pin (as shown).



Insert the opposite end of the shade onto the bracket as shown.

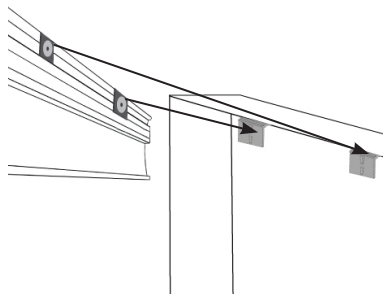


#### STEP 4

## DECO FASCIA INSTALLATION

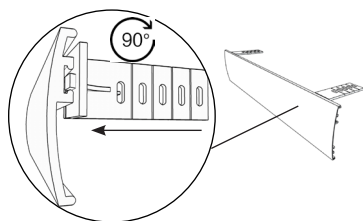
### INSIDE MOUNT

Inside mounted deco fascia can be installed by placing the magnet receiver (already attached) onto the magnet catch plates on the front of the installed brackets.



### OUTSIDE MOUNT *(if ordered)*

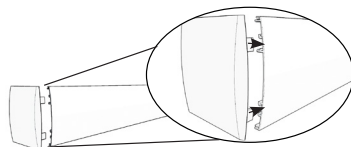
Use the white plastic L-bracket (shown) and insert at the top of the fascia (as shown). Push in lightly to turn the installation bracket on a 90° angle until is secured (facing up as shown). Slide the L-bracket on to the already installed T-bracket.



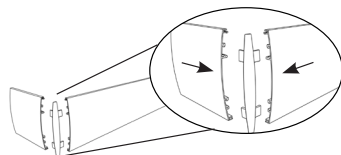
### OUTSIDE MOUNT *(if ordered)*

Attach the return with the supplied connector.

- Metal returns will include a plastic corner connector *(outside mount only)*
- Plastic returns simply snap on the end of the fascia *(inside mount shade with outside mounted fascia)*



Plastic return installation



Metal return installation

Proceed to Programming Instructions included with your order. QR codes to online guides can be found at the end of this guide.

---

## TROUBLESHOOTING

Shade is rolling up on tube unevenly or tracks:

If you notice the material winds unevenly and begins to track or telescope to one side check to ensure that the shade is level. If the shade is not level, remove it from the mounting brackets and shim or reinstall the brackets, as necessary.

**IMPORTANT NOTE:** Operating a shade that is not level will result in damage to the material. Damage caused by operating an unlevel shade is not covered under our normal warranty.

---

# PROGRAMING INSTRUCTIONS

Refer to programing instructions included with your order. Online guides can be located using the QR codes below.

## HOW TO GUIDES



Remote  
Control Guide



Otto Recharge  
Motor Guide



Otto 30/DC2  
Motor Guide



App Set Up  
Guide



Wifi Bridge  
Set Up Guide



Recharge  
Battery Pack

---

# ADDITIONAL VIDEO GUIDES

Refer to programing instructions included with your order. Online videos can be located using the QR codes below.

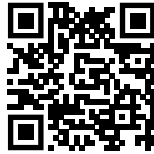
## VIDEOS



Pairing and  
Waking the  
Motor



Setting &  
Adjusting  
Limits



Setting the  
Favorite  
Position



Locking &  
Unlocking the  
Remote



Group Shades  
with P1 Button  
on Motor

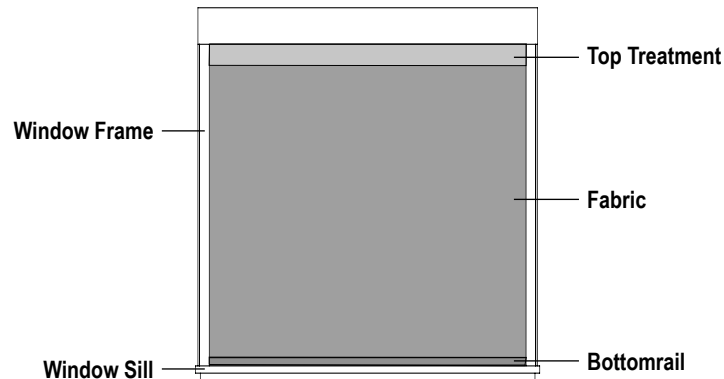


Group Shades  
with P2 Button  
on Remote



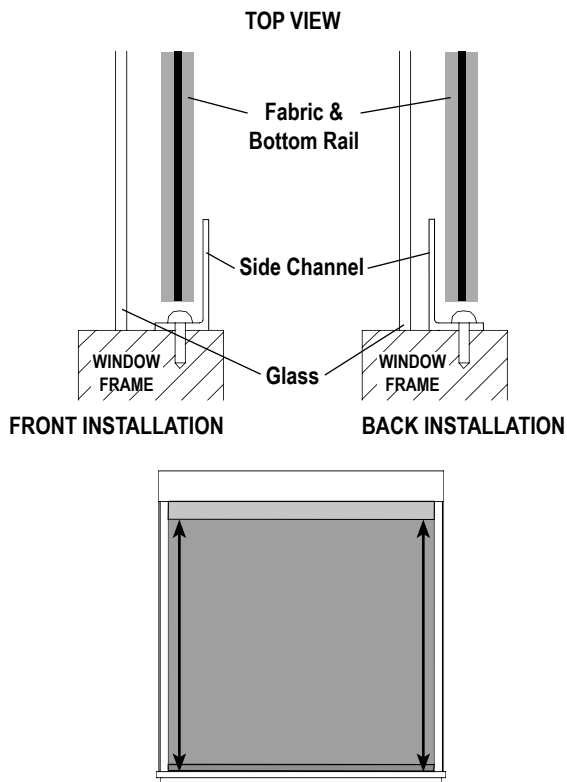


## 1. Install the Shade and Lower the Shade



**Note:** For instructions on how to install the shade – refer to the provided *Roller Shades Installation instructions*. Once the shade has been installed, lower the shade to rest on the window sill.

## 2. Prepare the Privacy Strips

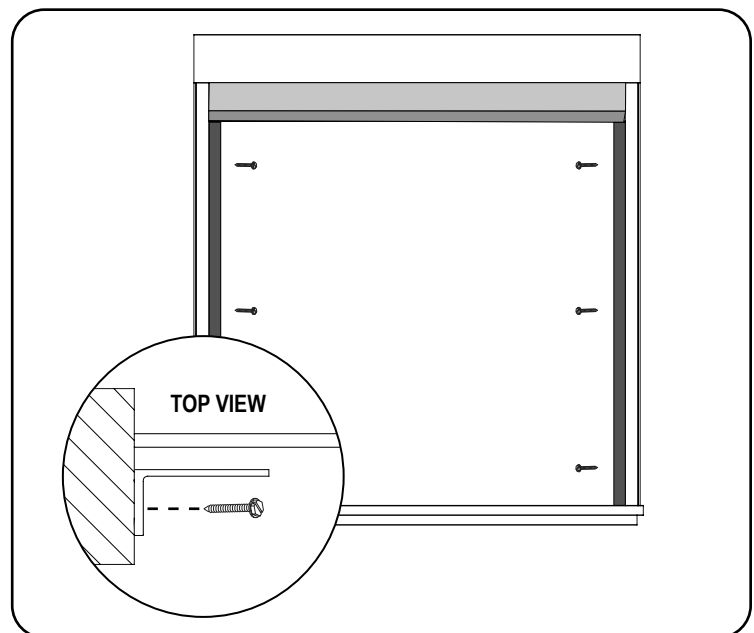


**Note:** Before installing your privacy strips, determine if you will be mounting the product in front or behind the material.

First, Measure the height of the opening where side channel is to be installed and verify that each piece fits in the intended space. Adjust with a saw if needed.

**Important:** For Cassettes, Fascias and Pocket installations, measure from the bottom of the top treatment to the window sill.

## 3. Install the Privacy Strip



Once mounting locations is determinated, install your privacy strips with the provided installation screws, evenly spaced.

**Note:** Raise the shade as needed, as to not damage the fabric.

## Child Safety

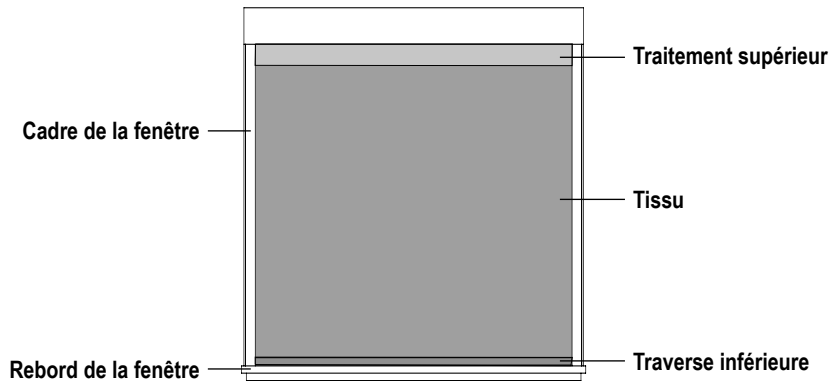
**WARNING/ADVERTENCIA**

5.1.3 Rev. 5/18 Print 5/18

Window Blind Cord Can **STRANGLE** Your Child. To prevent strangulation, purchase cordless products or products with inaccessible cords.

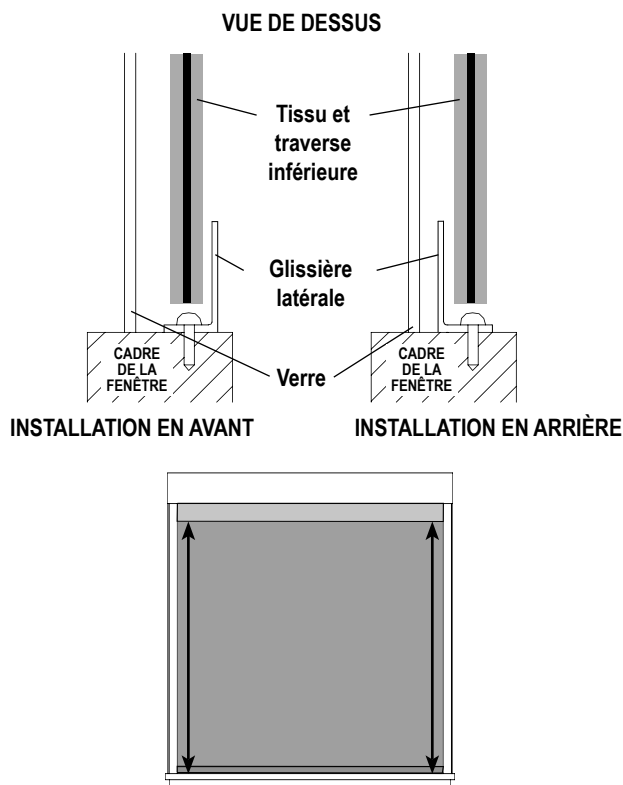
La cuerda de la persiana puede **ESTRANGULAR** a su niño. Para evitar el estrangulamiento, compre alternativas cuerda o productos con cuerdas inaccesibles.

## 1. Installer le store et abaisser le store



**Remarque :** Pour les instructions pour installer le store - référez aux instructions fournies *Instructions d'installation pour stores à enrouleur*. Lorsque le store est installé, abaissez le store pour qu'il repose sur le rebord de la fenêtre.

## 2. Préparer les glissières

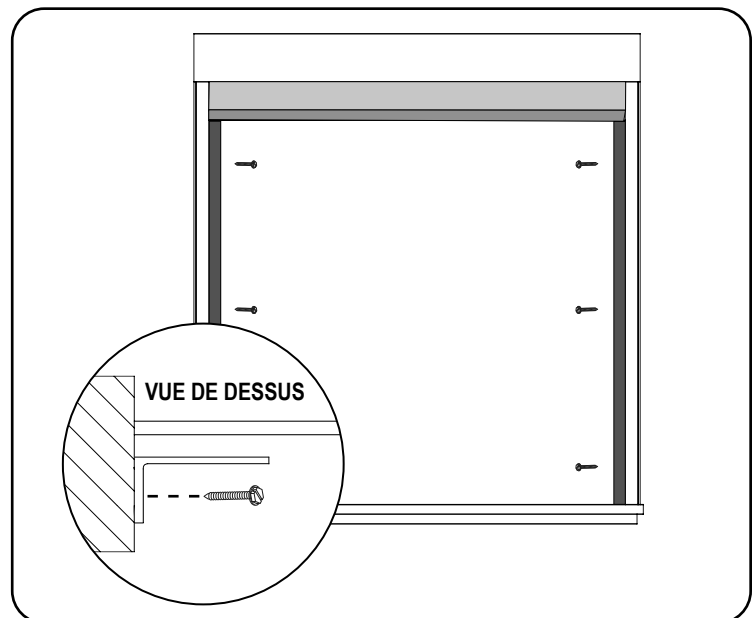


**Remarque :** Avant d'installer vos glissières, déterminez si vous allez monter le produit en avant ou en arrière le matériel.

Premièrement, mesurez la hauteur de l'ouverture où la glissière latérale sera installée et vérifiez que chaque pièce correspond avec l'espace prévu. Ajustez avec une scie si nécessaire.

**Important :** Pour les installations avec une cassette, bordure ou caisson, mesurez à partir du bas du traitement supérieur au rebord de la fenêtre.

## 3. Installer les glissières



Lorsque les endroits de montage sont déterminés, installez vos glissières avec les vis d'installation fournies, en espaces uniformes.

**Remarque :** Soulevez le store comme nécessaire, pour ne pas endommager le tissu.

## Sécurité des enfants

**⚠ WARNING** STRANGULATION HAZARD – Young children can be strangled by cords. Immediately remove this product if a cord longer than 22 cm or a loop exceeding 44 cm around becomes accessible. Rev 7/21 Print 7/21

**⚠ MISE EN GARDE** RISQUE D'ÉTRANGLEMENT – Les enfants en bas âge peuvent s'étrangler avec des cordes. Enlevez immédiatement ce produit si une corde mesurant plus de 22 cm devient accessible ou si le contour d'une boucle de plus de 44 cm devient accessible.

