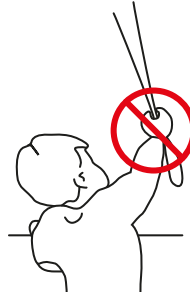


Installation Instructions - Cassette

Read the instructions carefully before assembling and using the product. Assembling process can be completed by non-professionals. For indoor use only.

WARNING

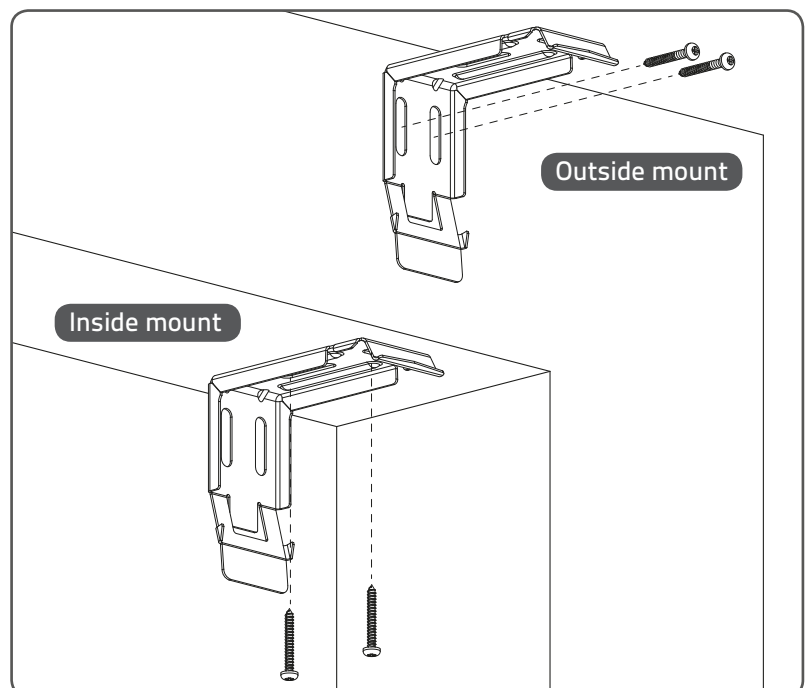
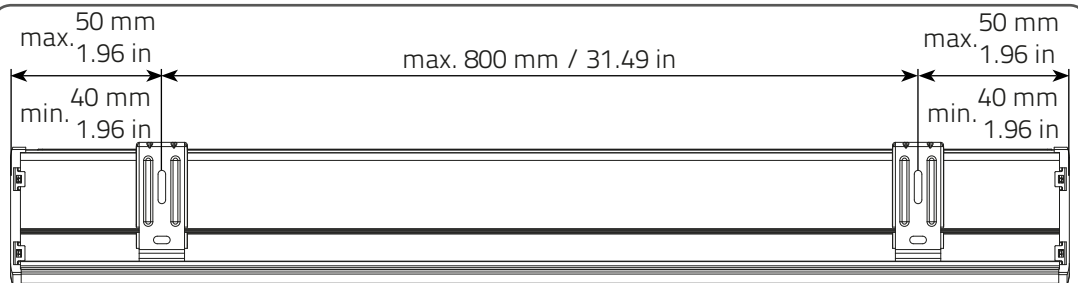
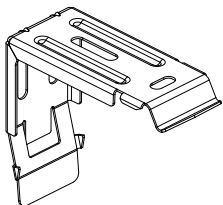
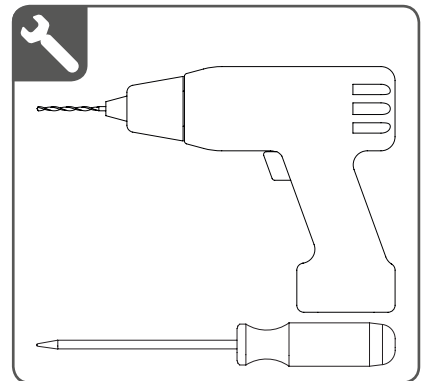
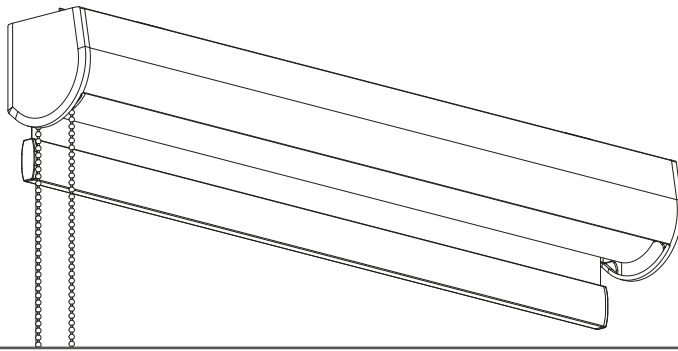
- Young children can strangle in the loop of pull cords, chains and tapes, and cords that operate window coverings.
 - To avoid strangulation and entanglement, keep cords out of the reach of young children. Cords may become wrapped around a child's neck
 - Move beds, cots and furniture away from window covering cords.
 - Do not tie cords together.
- Make sure cords do not twist together and form a loop.

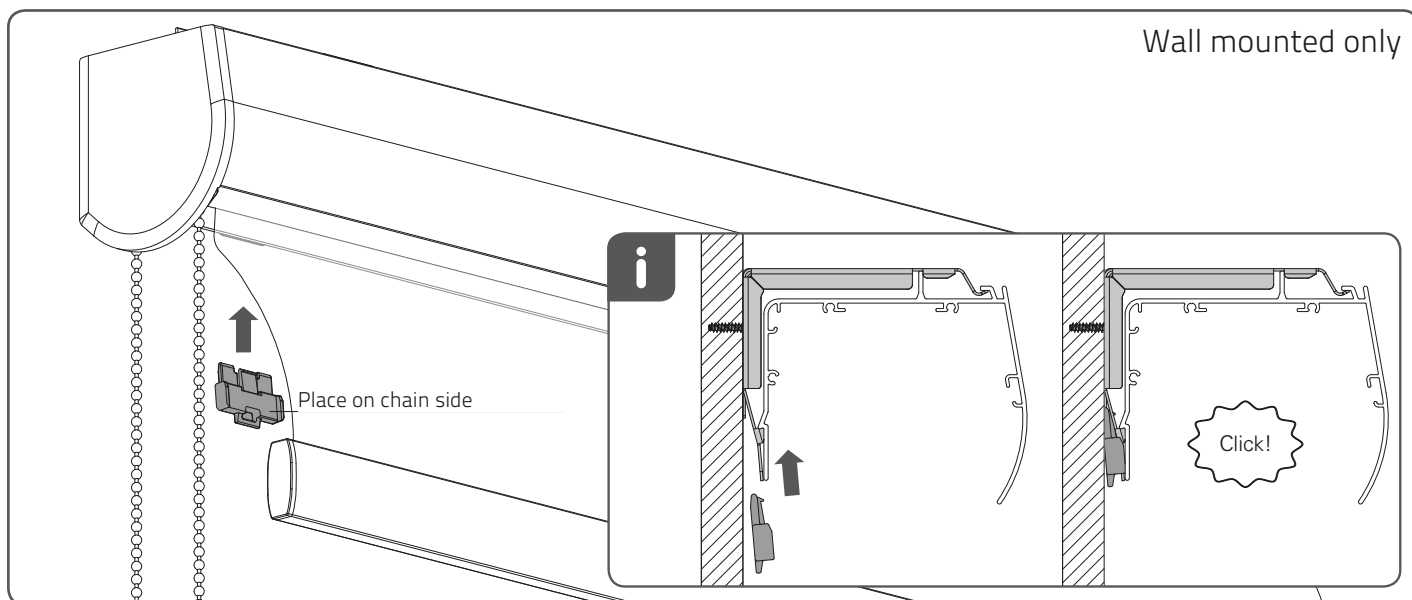
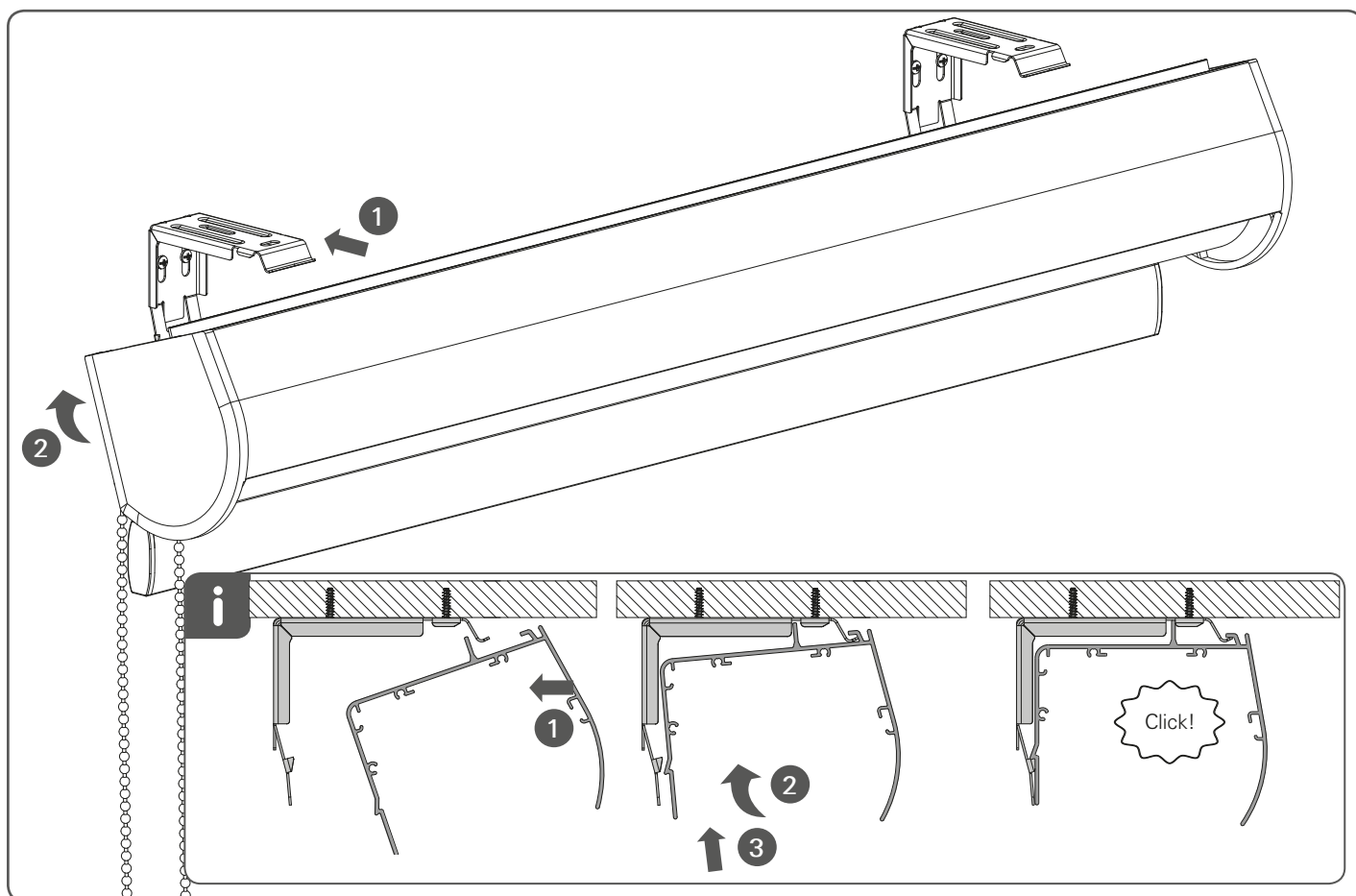


QR



rtube.nl/red235



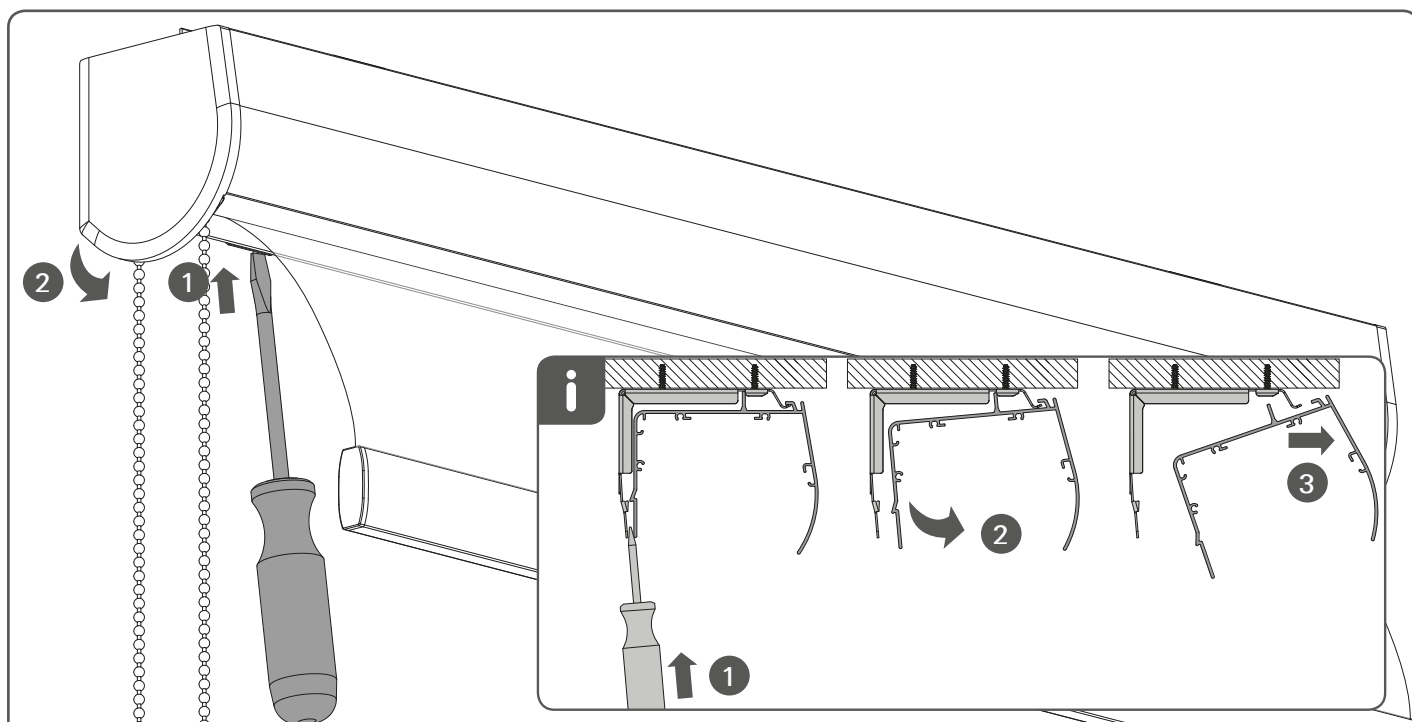


⚠ WARNING

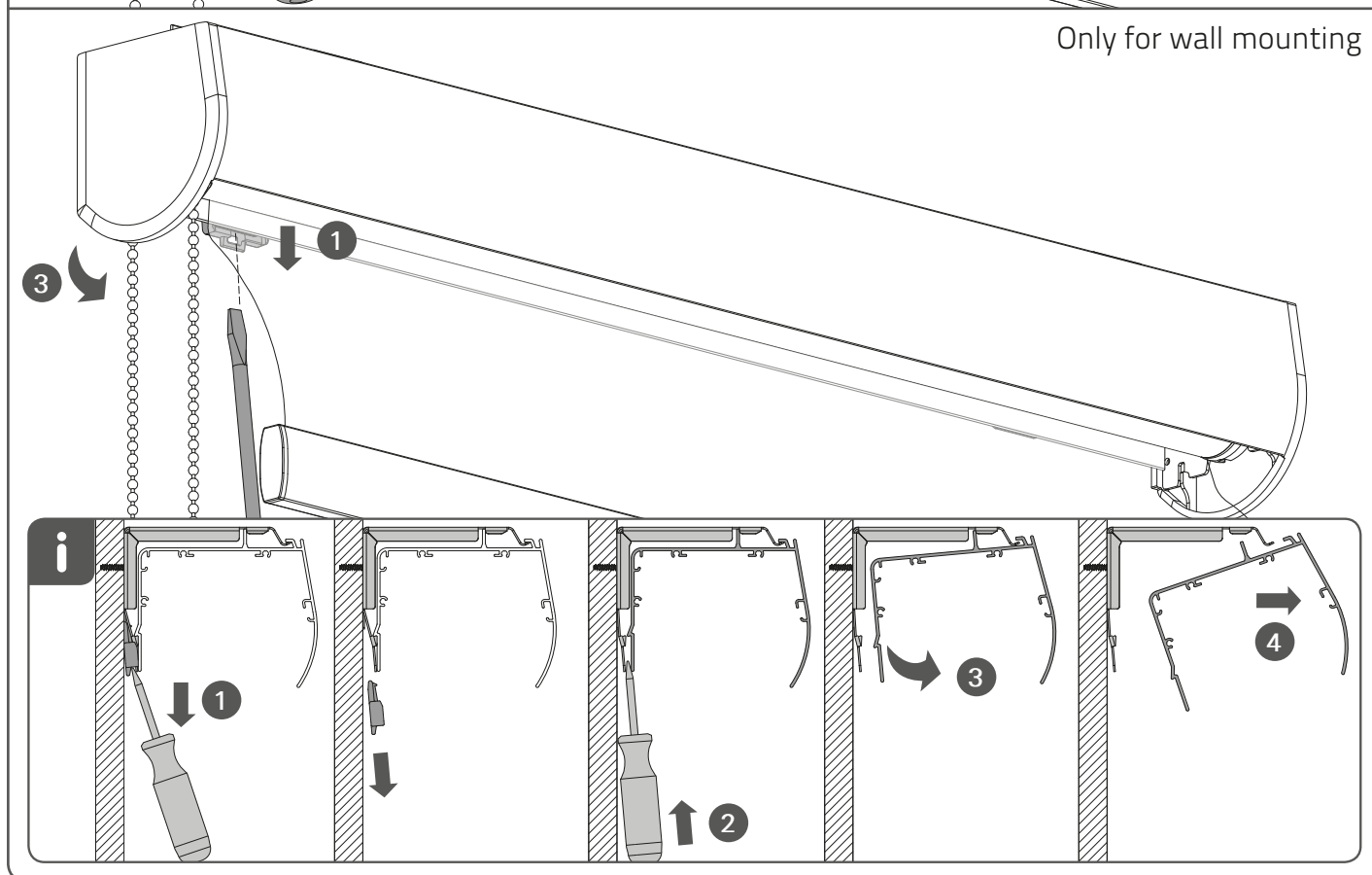
Install the child safety device as specified in the childsafe manual.



Removal



Only for wall mounting



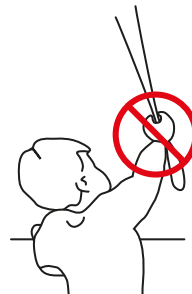
INSTALLATION INSTRUCTIONS - STANDARD BRACKETS

Installation

Read the instructions carefully before assembling and using the product.
Assembling process can be completed by non-professionals. For indoor use only.

WARNING

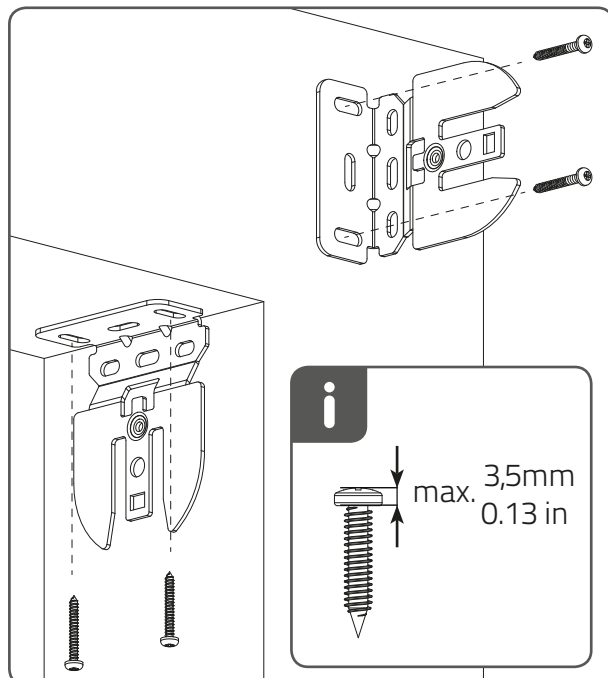
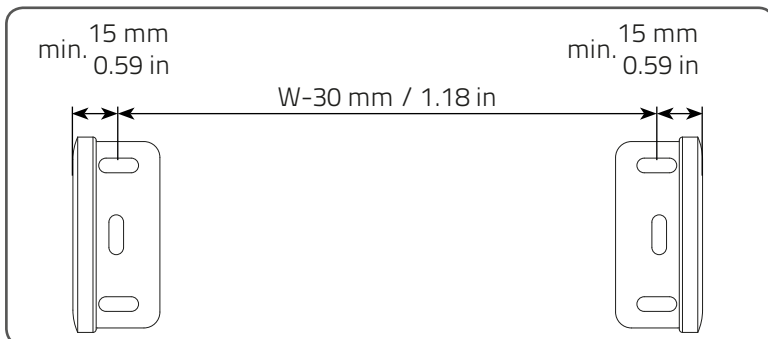
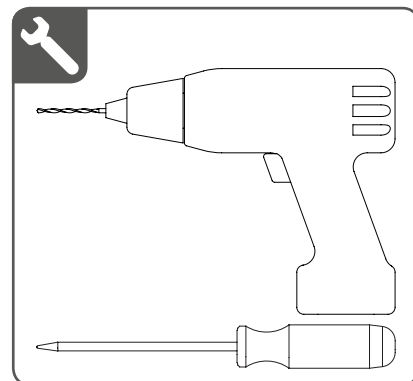
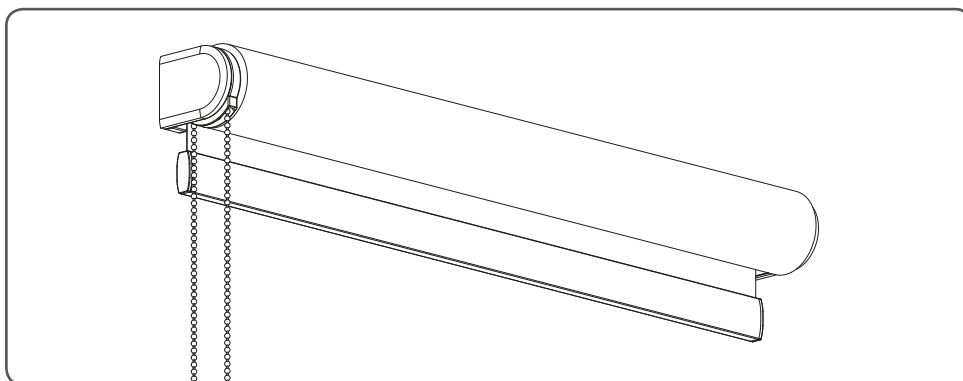
- Young children can strangle in the loop of pull cords, chains and tapes, and cords that operate window coverings.
 - To avoid strangulation and entanglement, keep cords out of the reach of young children. Cords may become wrapped around a child's neck
 - Move beds, cots and furniture away from window covering cords.
 - Do not tie cords together.
- Make sure cords do not twist together and form a loop.

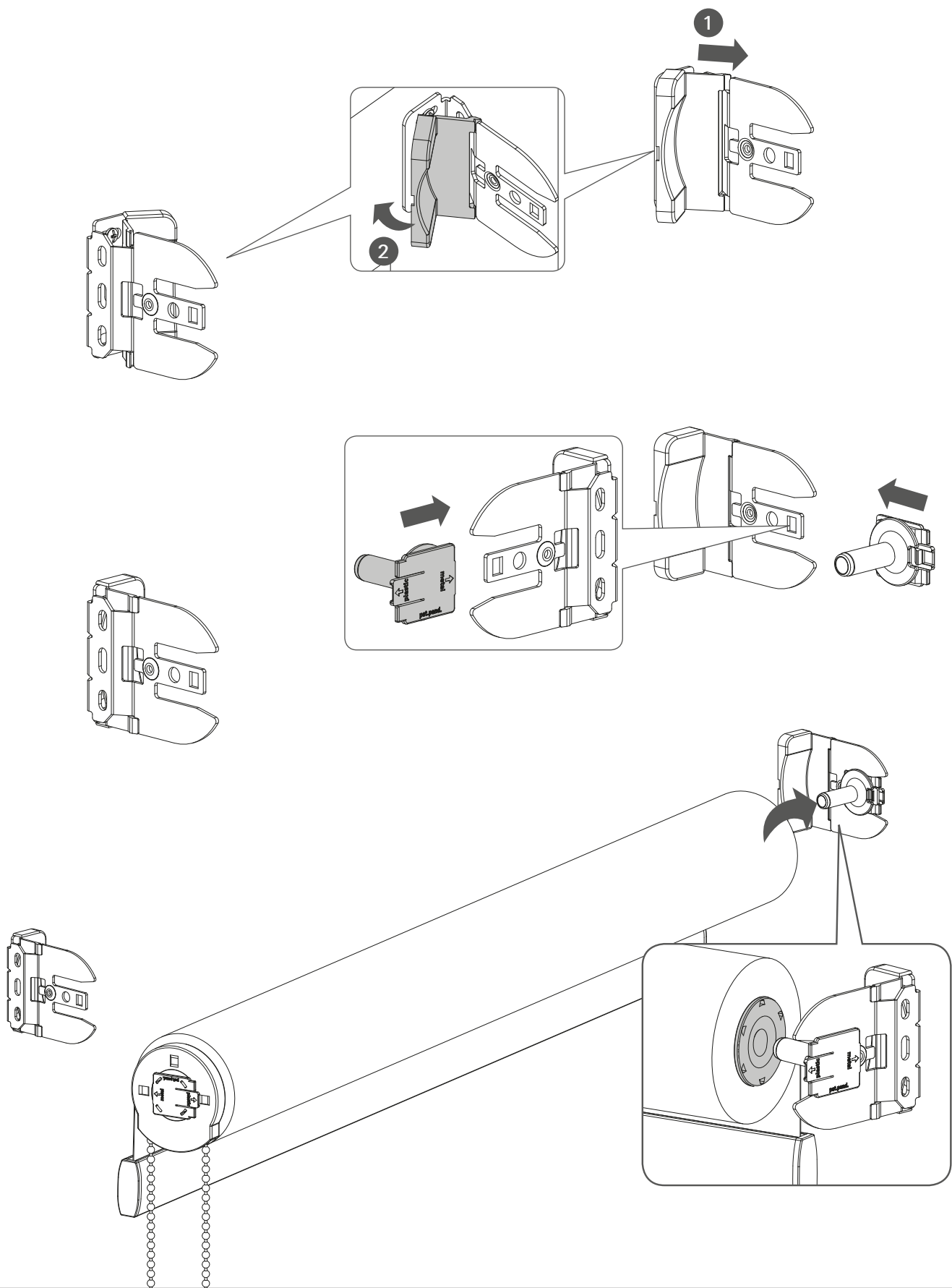


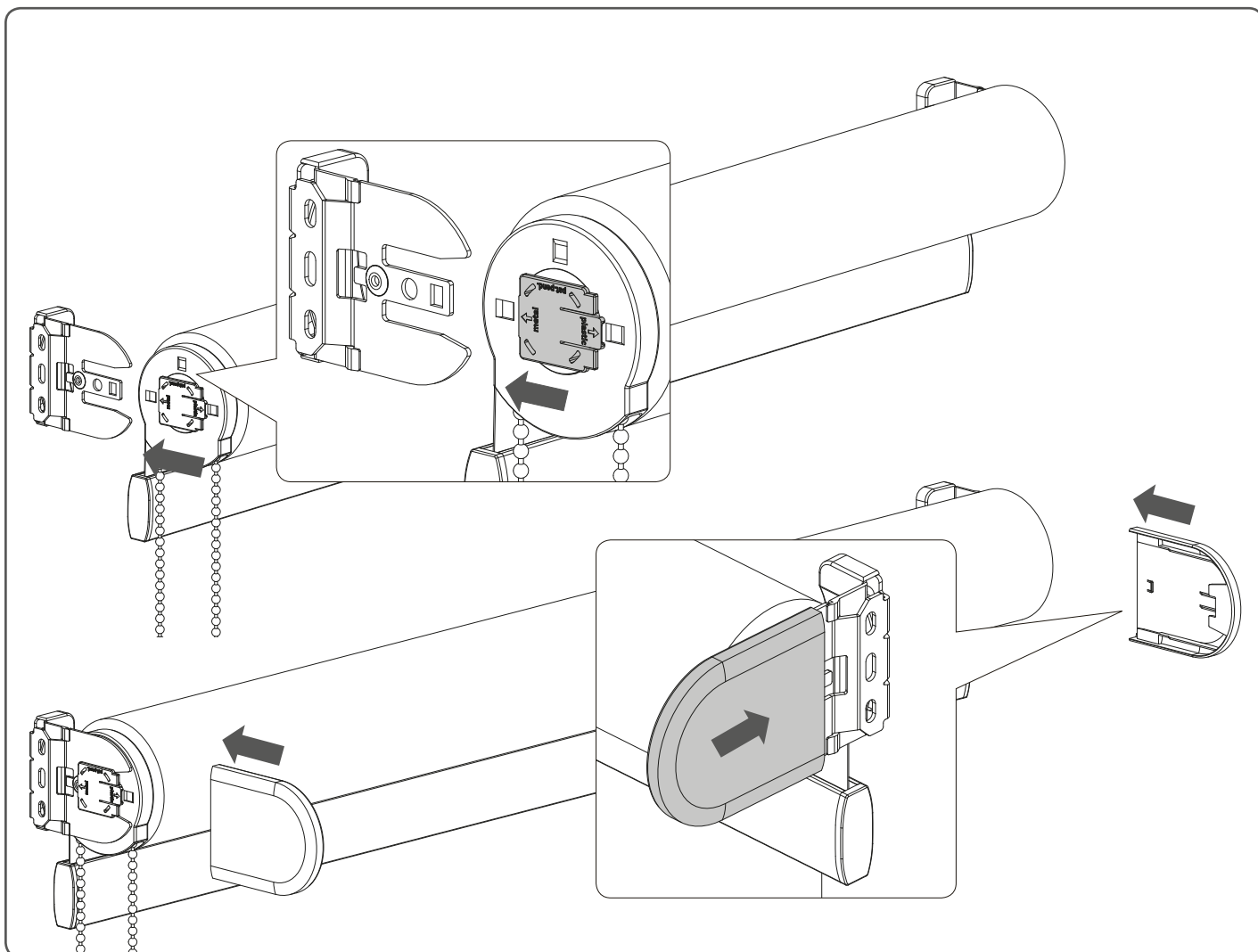
QR



rtube.nl/red233





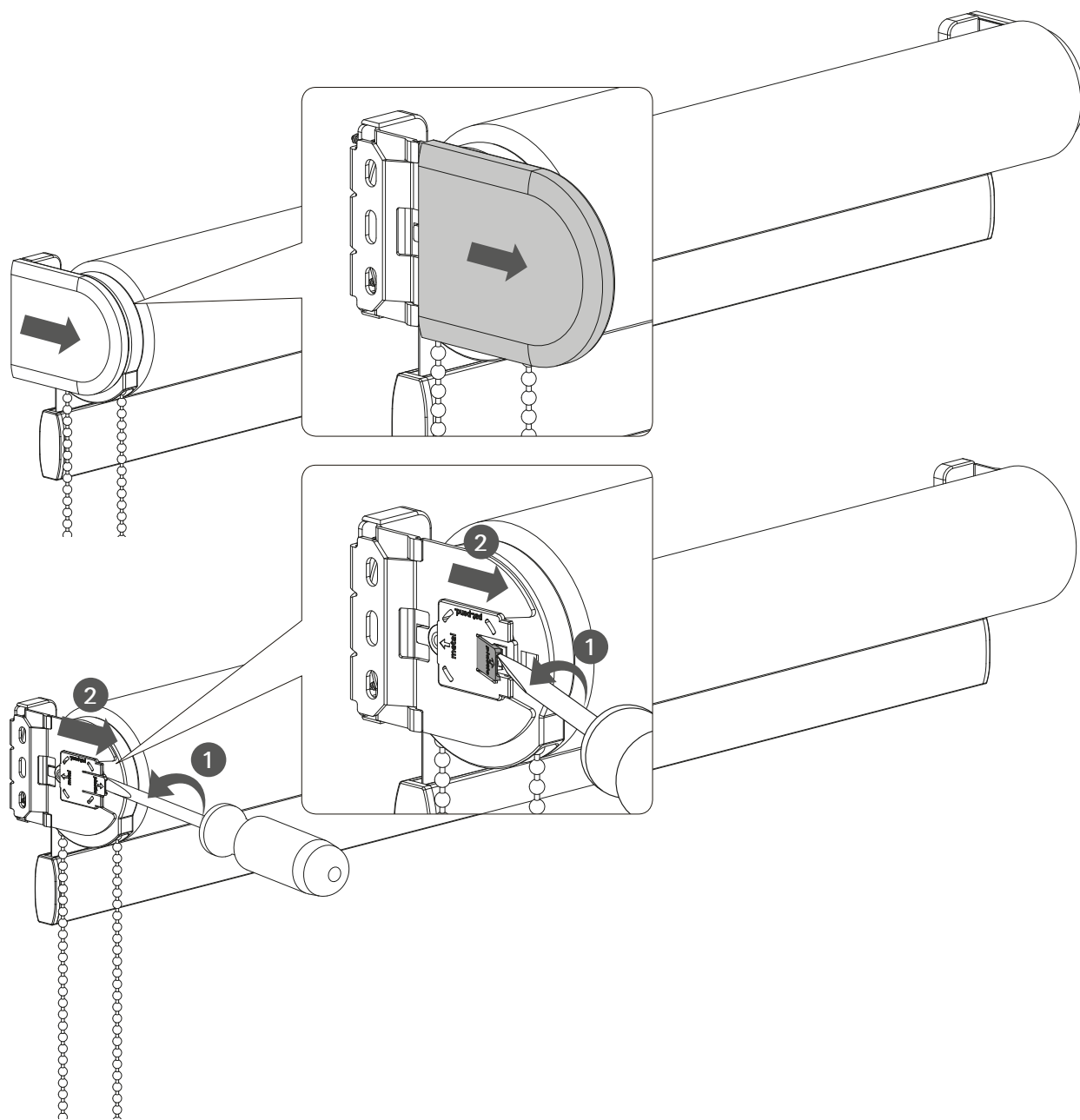


WARNING

Install the child safety device as specified in the childsafe manual.

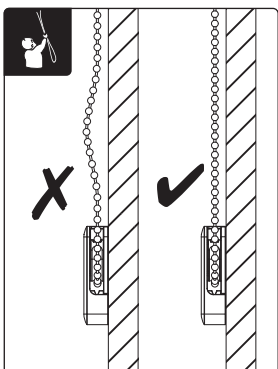
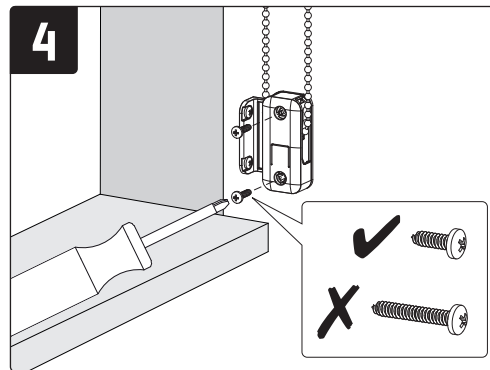
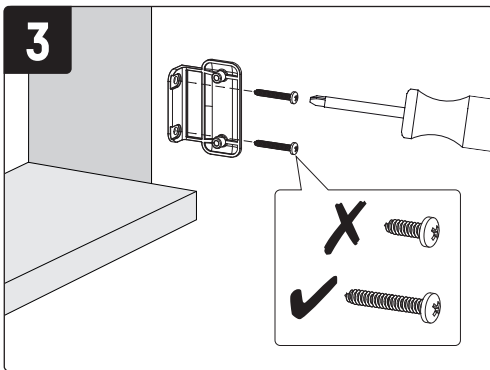
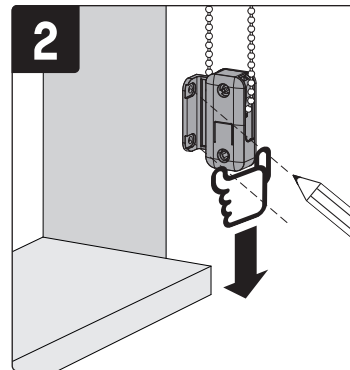
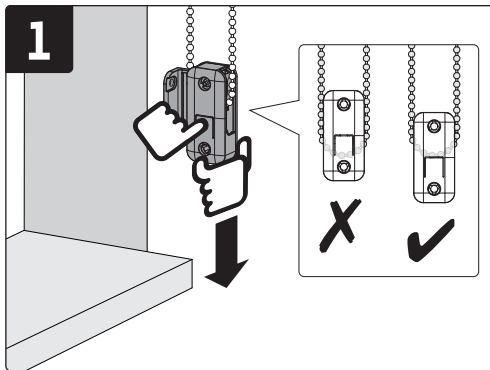
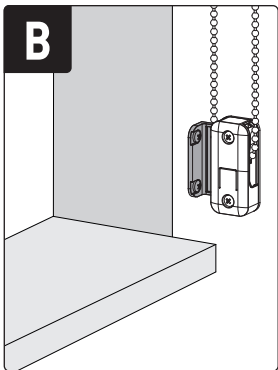
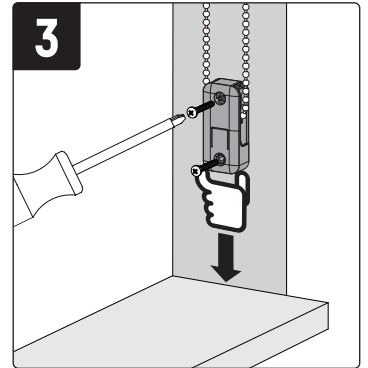
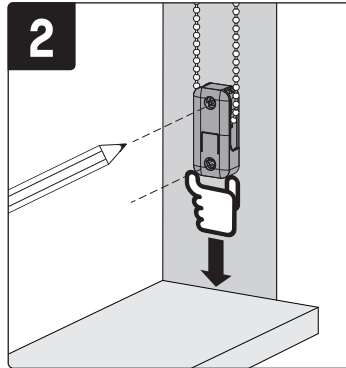
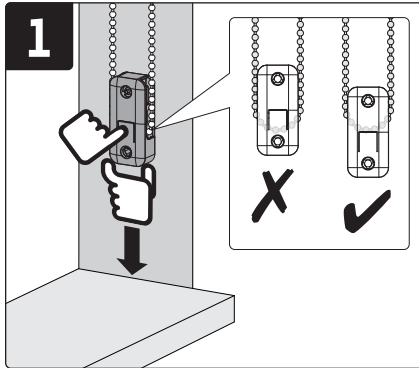
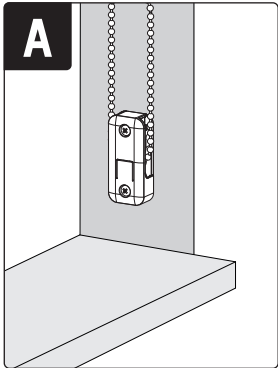
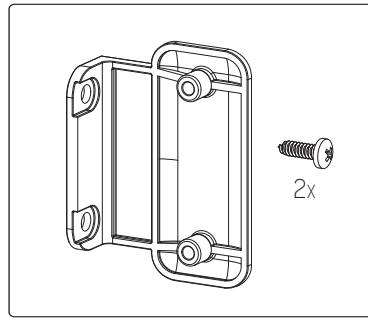
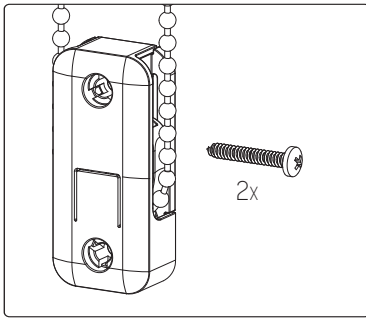


Removal



WARNING

The safety device must be applied on chain loops and prevents free-hanging loops in operating chains.
Install the safety device at the maximum distance possible from the control mechanism to prevent slack in the loop.

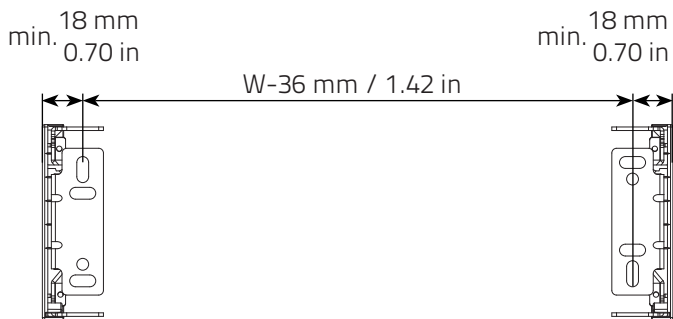
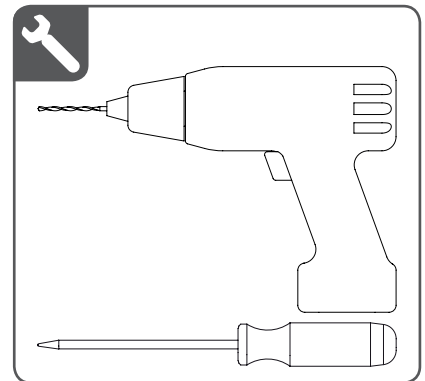
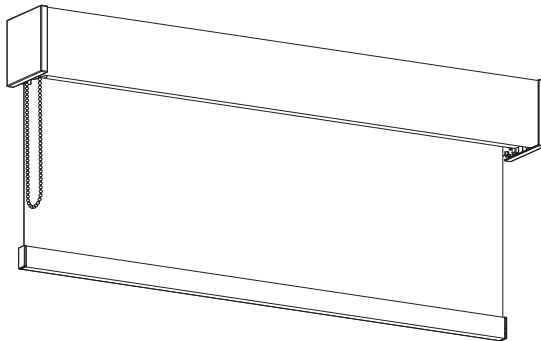
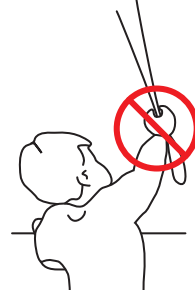


Installation - Fascia

Read the instructions carefully before assembling and using the product.
Assembling process can be completed by non-professionals. For indoor use only.

WARNING

- Young children can strangle in the loop of pull cords, chains and tapes, and cords that operate window coverings.
- To avoid strangulation and entanglement, keep cords out of the reach of young children. Cords may become wrapped around a child's neck
- Move beds, cots and furniture away from window covering cords.
- Do not tie cords together.
Make sure cords do not twist together and form a loop.



Outside Mount

Inside Mount

Step One:

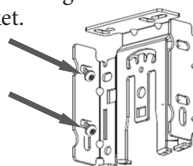
- Use the brackets to mark the screw locations
- On outside mount, make your marks so the distance from the outside edge of the bracket to the outside edge of the other bracket equals your ordered width

Note: Brackets must be level to each other for the shade to operate properly (for both inside mount and outside mount)

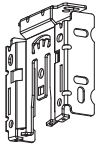
Step Two:

- Recommend you pre-drill the screw holes using a 5/64" drill bit where you marked the screw locations
- Mount the brackets using 2 screws for each bracket

Note: On outside mount, the screws will be installed on an angle. This is normal and the screws may not be flat against the bracket.

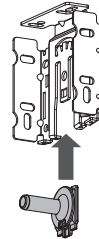


Installation



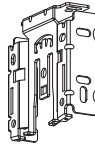
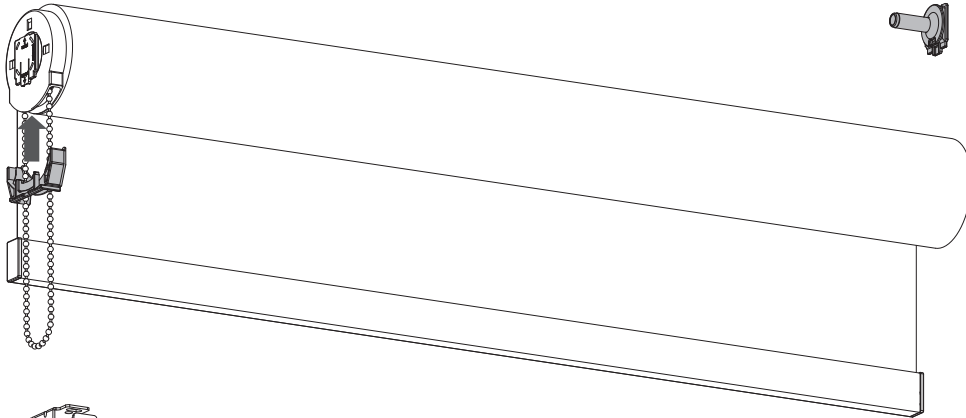
Step Three:

- The idle side attachment should be on the opposite side of the chain (simply click into the bracket if it is not already attached)



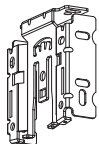
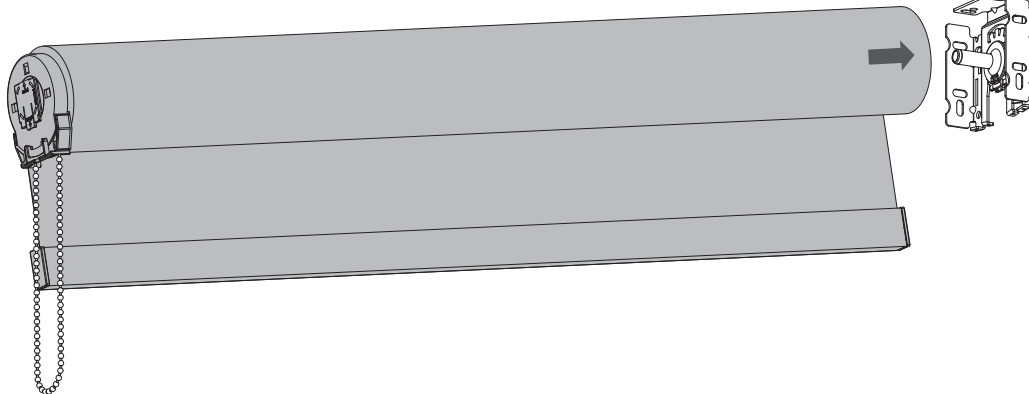
Step Four:

- Slide the chain guide onto the clutch



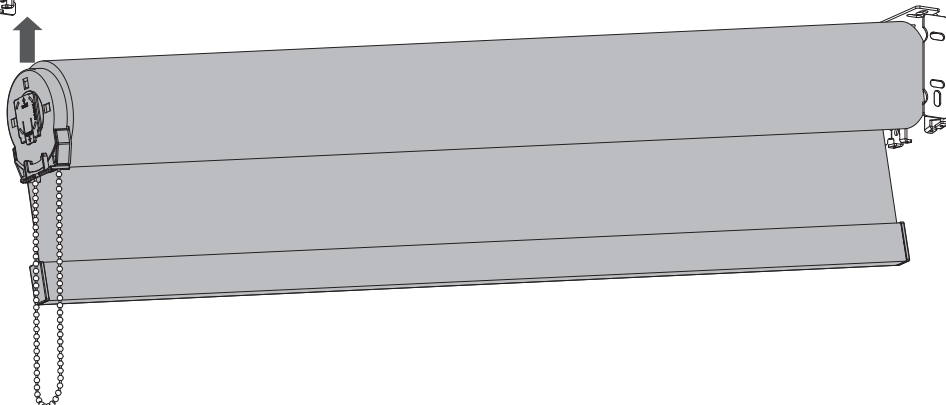
Step Five:

- Slide the idle side of the shade on to the idle side connector



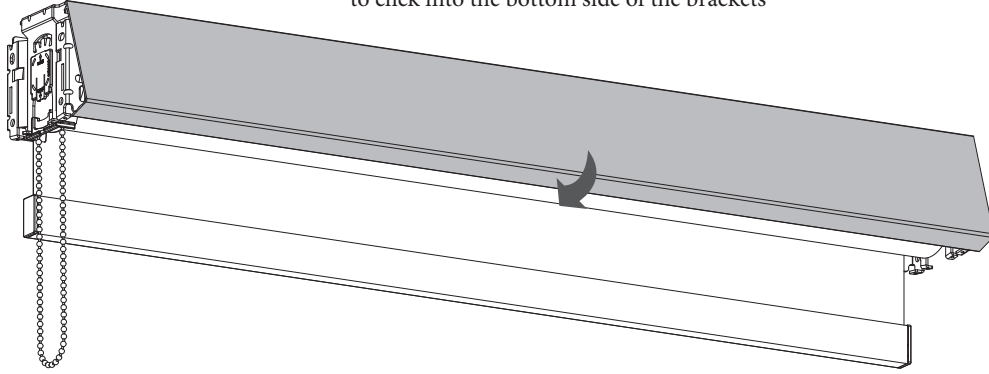
Step Six:

- Click the control side of the shade the bracket



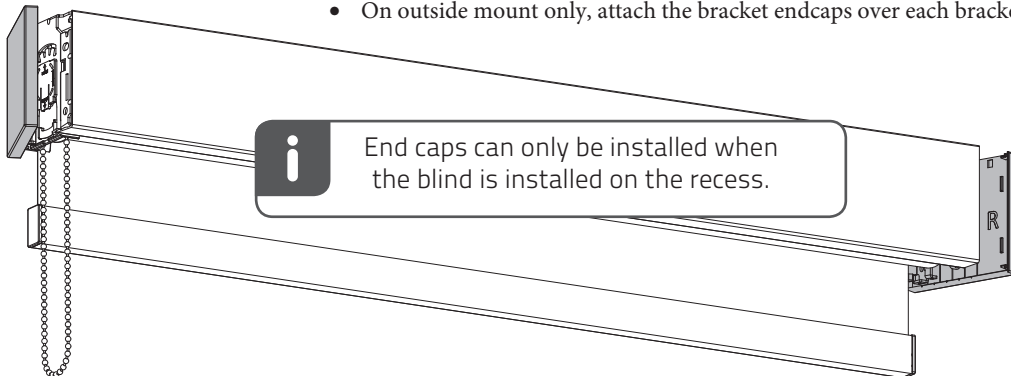
Step Seven:

- Connect the fascia to the top of the brackets and rotate it down to click into the bottom side of the brackets



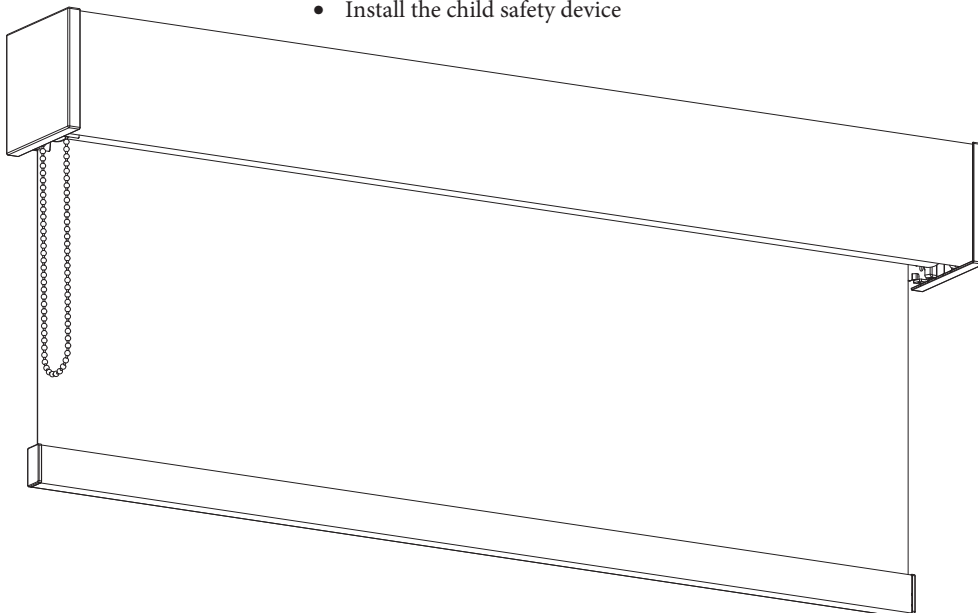
Step Eight:

- On outside mount only, attach the bracket endcaps over each bracket



Final Step:

- Install the child safety device

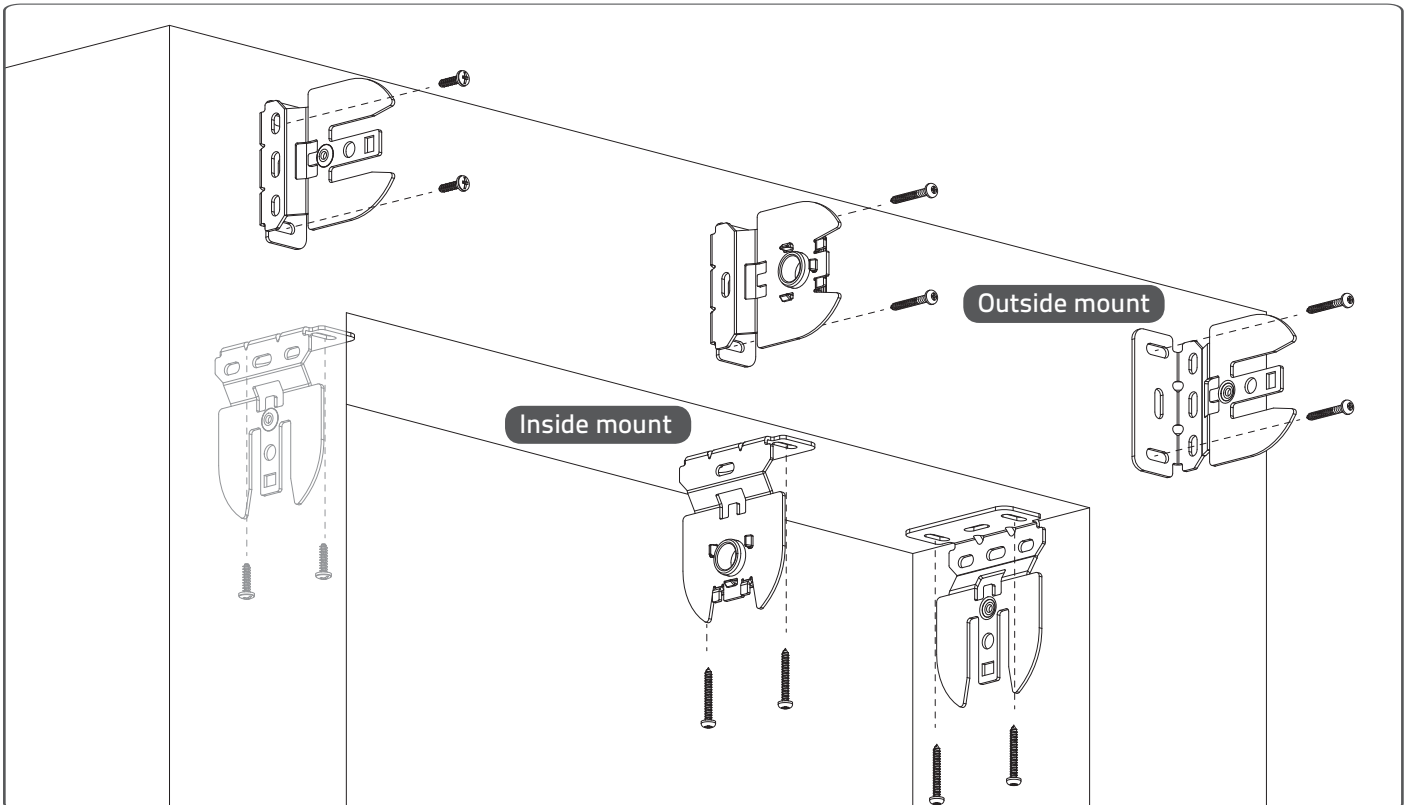
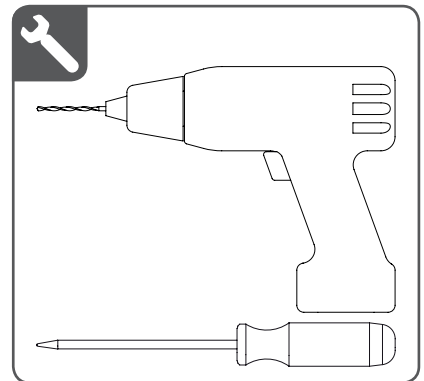
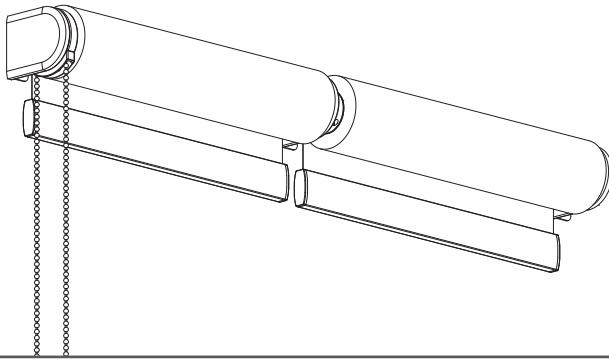
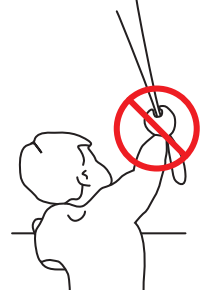


Installation - 2-on-1 Open Roll with a single control

Read the instructions carefully before assembling and using the product.
Assembling process can be completed by non-professionals. For indoor use only.

WARNING

- Young children can strangle in the loop of pull cords, chains and tapes, and cords that operate window coverings.
- To avoid strangulation and entanglement, keep cords out of the reach of young children. Cords may become wrapped around a child's neck
- Move beds, cots and furniture away from window covering cords.
- Do not tie cords together. Make sure cords do not twist together and form a loop.

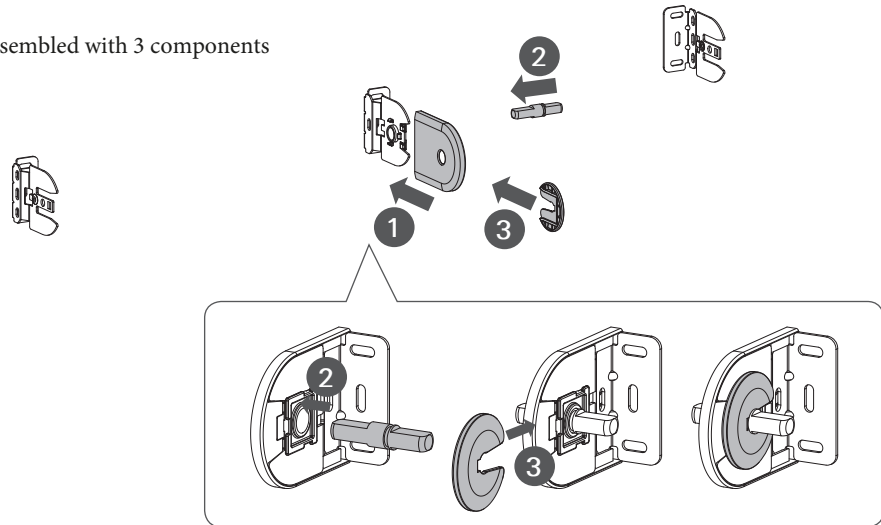


Step One:

- Use the brackets to help mark the screw locations
- On outside mount, make your marks so the distance from the outside edge of the left bracket to the outside edge of the right bracket equals your ordered width and the intermediate bracket is exactly in the middle of those brackets
- **Brackets must be installed level to each other for the shade to operate properly (for both inside mount and outside mount)**

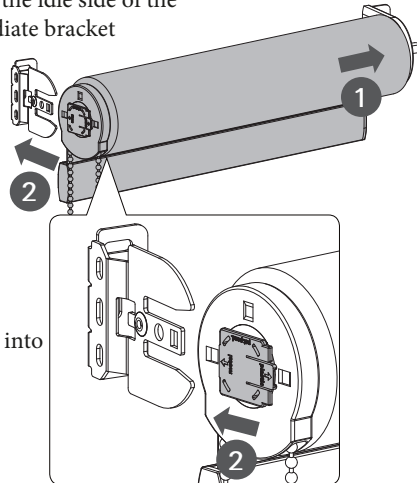
Step Two:

- Intermediate bracket will come assembled with 3 components



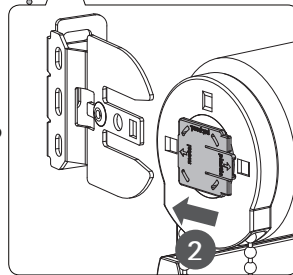
Step Three:

- Start with the left shade by sliding the idle side of the shade onto the pin of the intermediate bracket



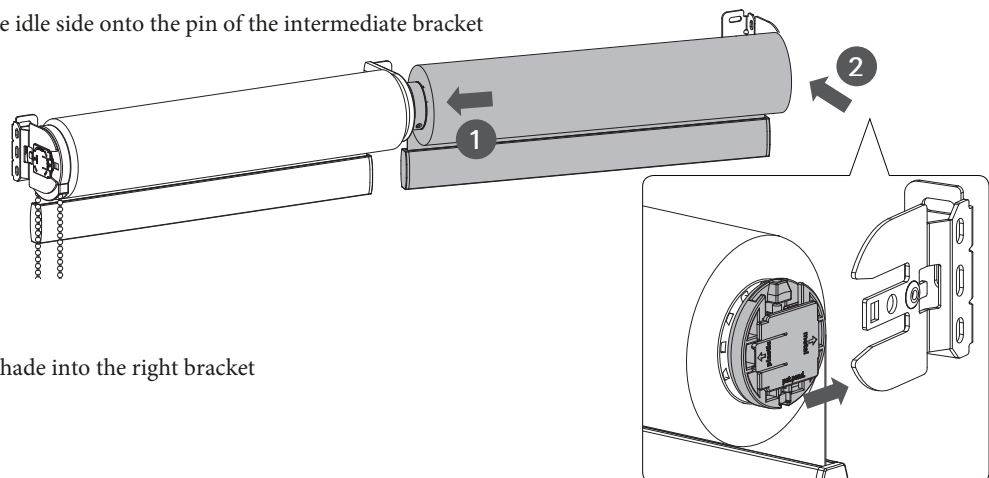
Step Four:

- Click the control side of the shade into the left bracket



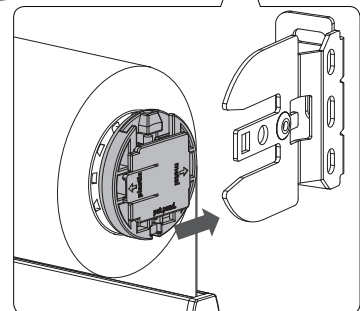
Step Five:

- With the right shade, slide the idle side onto the pin of the intermediate bracket



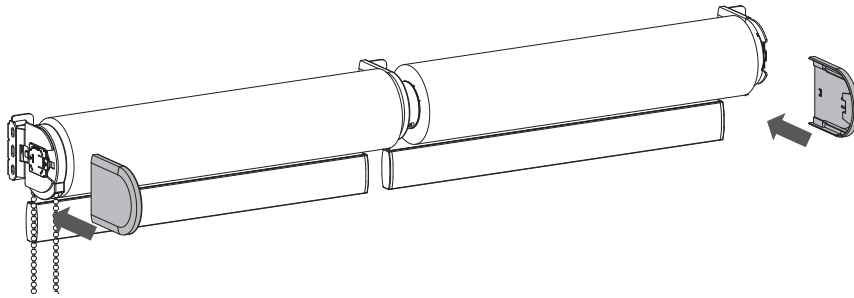
Step Six:

- Click the control side of the shade into the right bracket



Step Seven:

- Slide the bracket cover on the left and right bracket



Final Step:

- Install the child safety device

⚠ WARNING

Install the child safety device as specified in the childsafe manual.

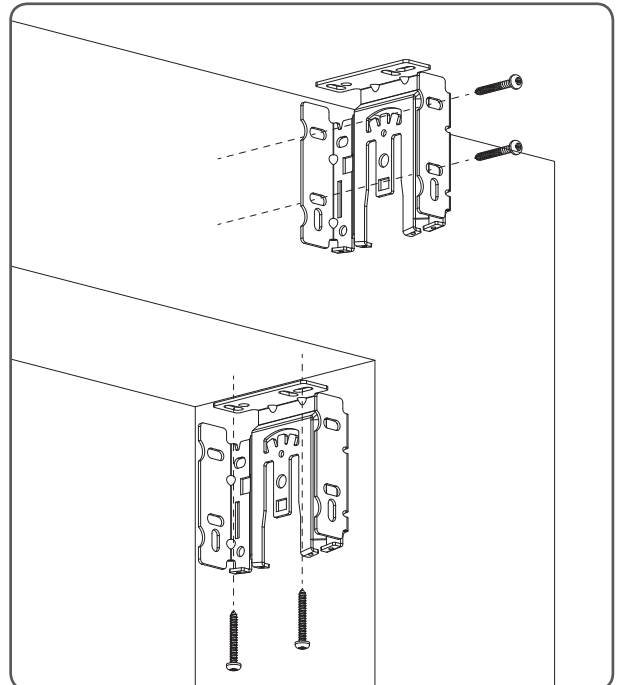
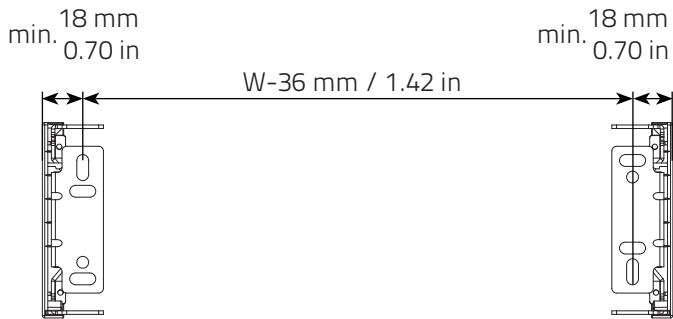
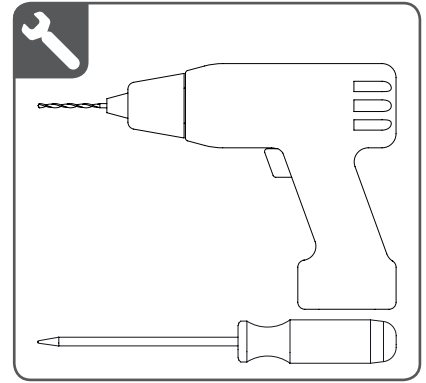
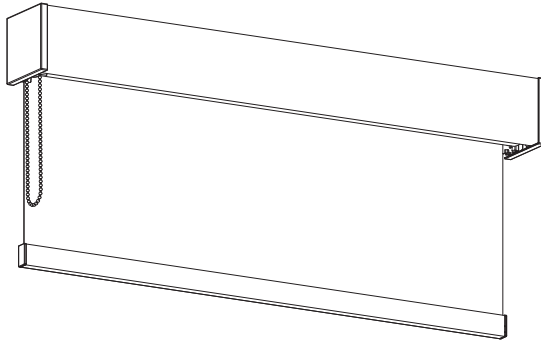
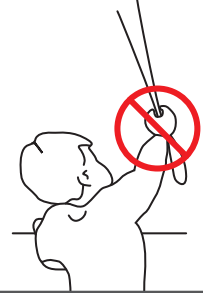


Installation - Fascia: 2-on-1 with Continuous Chain

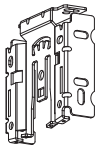
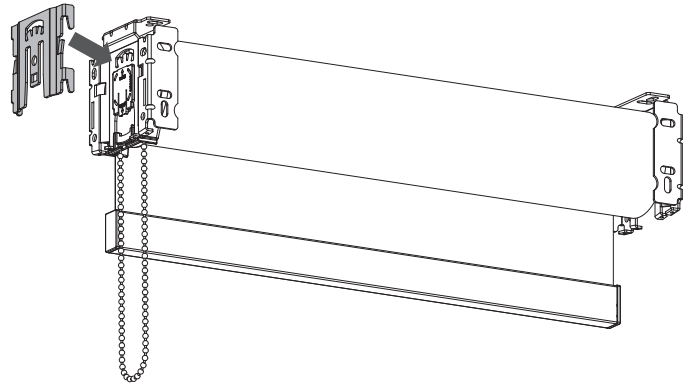
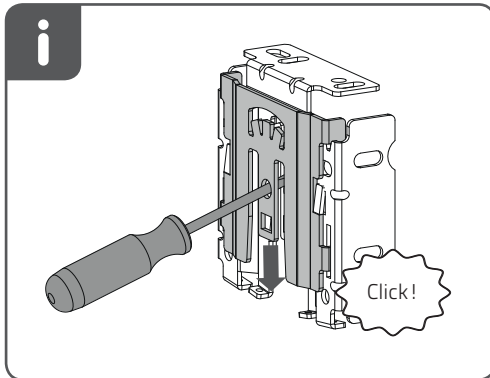
Read the instructions carefully before assembling and using the product.
Assembling process can be completed by non-professionals. For indoor use only.

WARNING

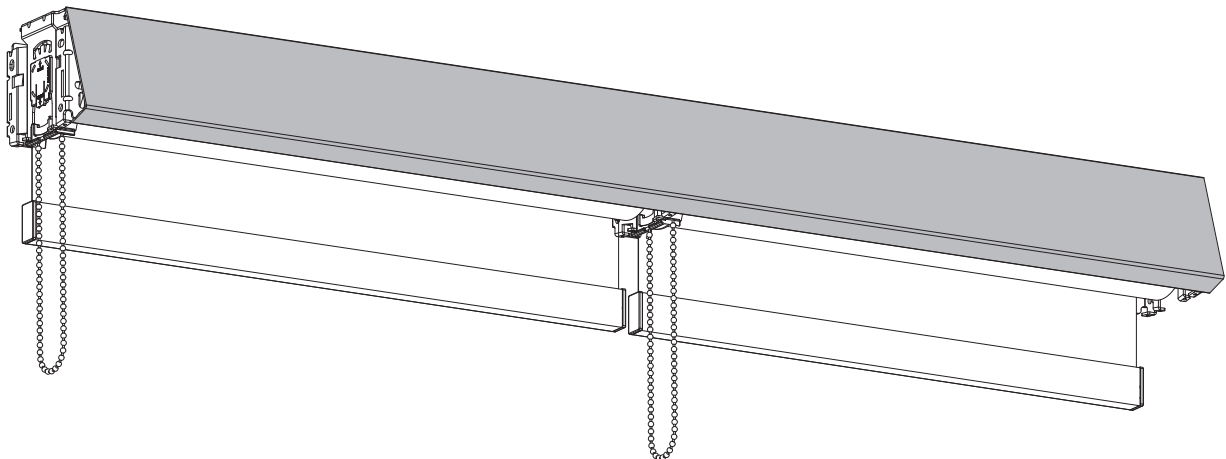
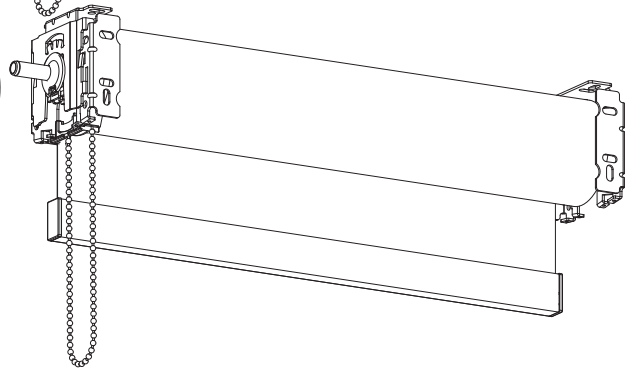
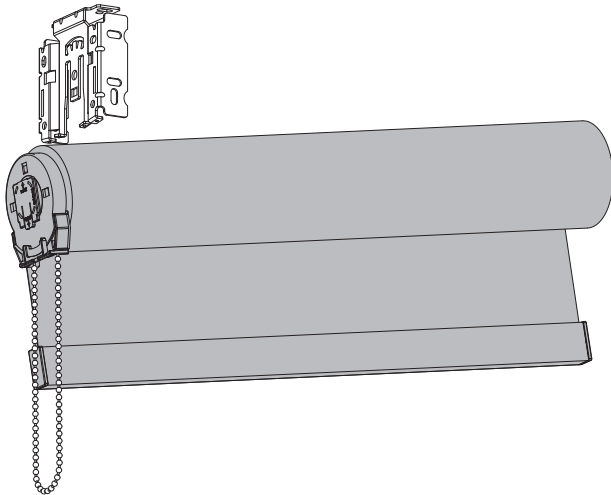
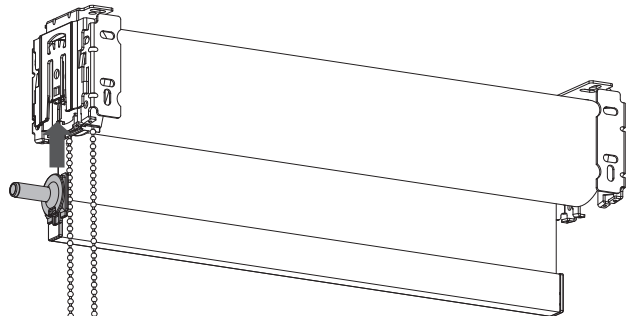
- Young children can strangle in the loop of pull cords, chains and tapes, and cords that operate window coverings.
- To avoid strangulation and entanglement, keep cords out of the reach of young children. Cords may become wrapped around a child's neck
- Move beds, cots and furniture away from window covering cords.
- Do not tie cords together.
Make sure cords do not twist together and form a loop.

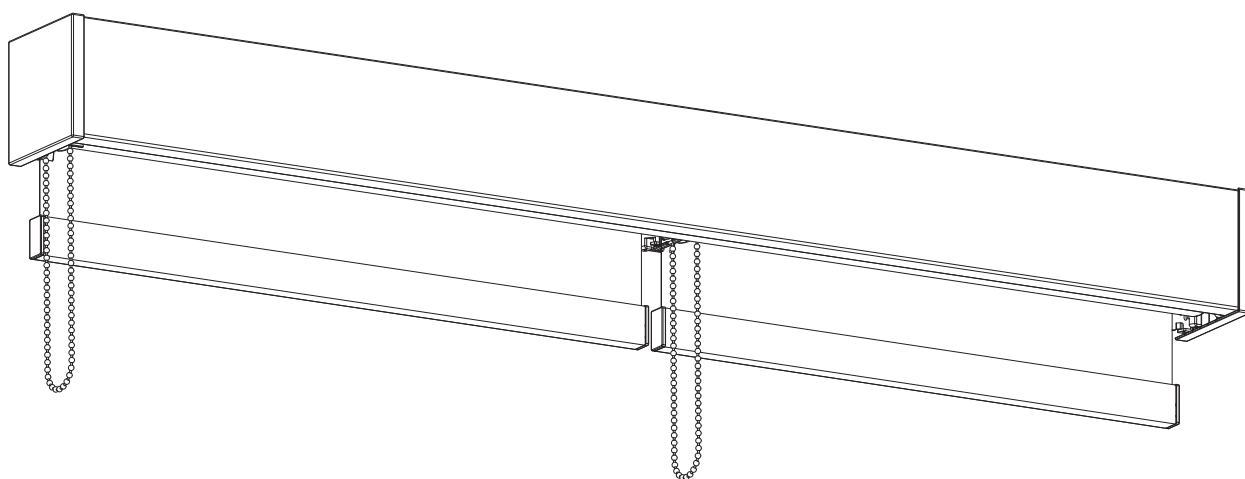
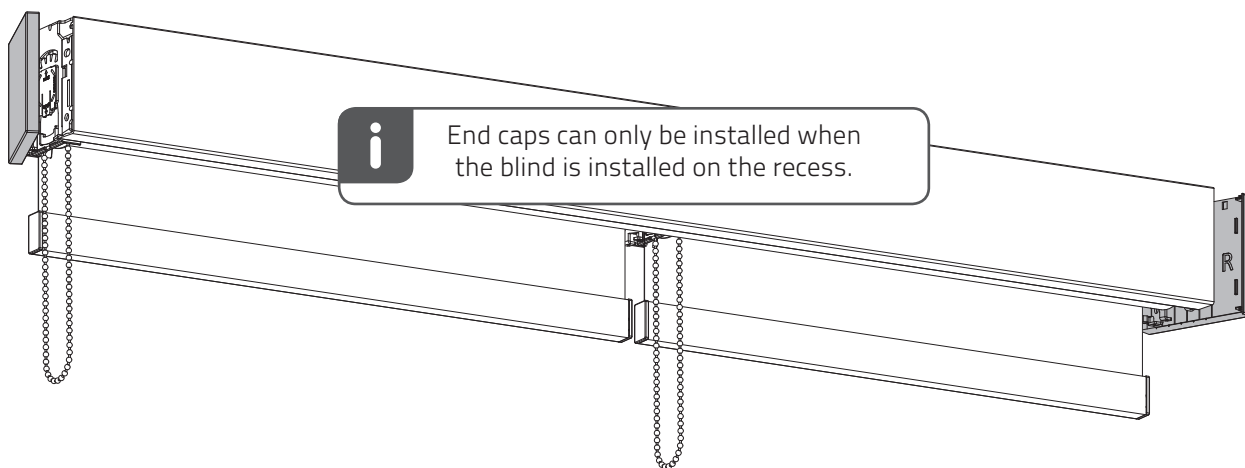


Fascia 2-on-1 (Intermediate) Installation



i Mechanism can be placed at both sides.





CORNICE INSTALLATION INSIDE MOUNT

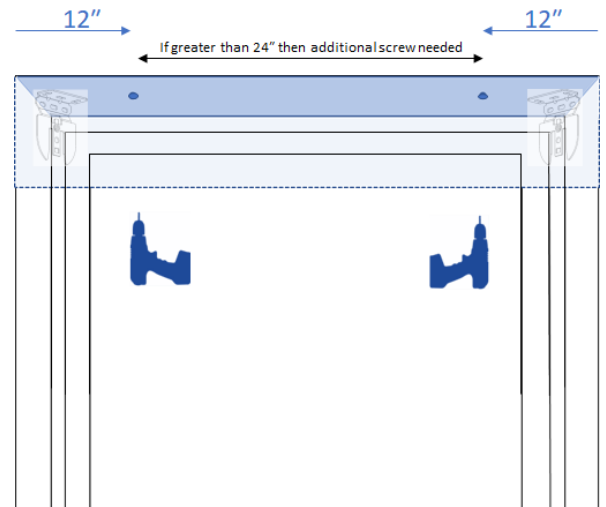
NOTE:

The brackets for your shade will come installed on the cornice (if the cornice and shade are ordered together).

Install cornice before installing the shade.

Inside Mount cornices are made 1/8" less than the ordered width of the shade.

1. Hold the cornice to the top of your window frame and set it back until it is flush with your wall or until it is touching the back of the window opening. Be sure the cornice is centered in the opening.
2. Predrill holes through the cornice for your screws:
 - a. 12" maximum from each side
 - b. Space between screws should not exceed 24"
3. Secure your cornice to the window by screwing through each hole you predrilled.
4. Once the cornice is mounted, you can then install the shade.



CORNICE INSTALLATION OUTSIDE MOUNT

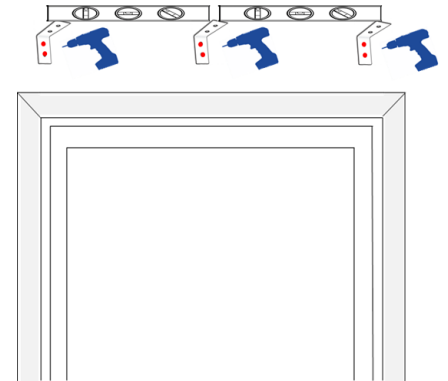
NOTE:

The brackets for your shade will come installed on the cornice (if the cornice and shade are ordered together).

Install cornice before installing the shade.

Outside Mount cornices are made 1" wider than the ordered width of the shade.

1. Make sure the surface you intend to install your cornice hardware is sturdy enough to support the brackets. You will need to screw into wood studs that are strong enough to securely bond with the included screws or you will need to use fasteners to securely support the brackets. Please note secure fasteners are not included.
2. Center the cornice over the window opening at your desired height. Mark the position of the ends of the cornice on the wall. Measure in 6" from each end and using the cornice bracket mark the screw holes with a pencil. If you have additional cornice brackets, space them evenly between the outer brackets. Make sure all the mounting brackets are level with one another.
3. Pre-drill the holes for each cornice bracket and then secure the brackets to your mounting surface.



4. Place the cornice on top of the brackets and center it to the window. Check again that the cornice is level. Hold the cornice in place and screw through the top of each bracket into the cornice.
5. Once the cornice is secured to each bracket, then you can install the shade.

