

# SelectBlinds®

## Installation Guide: Roman Shades

Cordless Lift

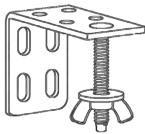


Installation  
Inside Mount



Installation  
Outside Mount

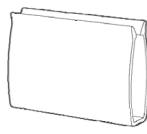
### HARDWARE AND PARTS INCLUDED



BRACKET WITH WINGNUT



SCREWS



CORDLESS HANDLE



WALL ANCHORS\*

\*Recommended if mounting into hollow drywall.

### TOOLS REQUIRED



PENCIL



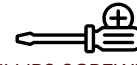
TAPE MEASURE



POWER DRILL



5/64" DRILL BIT



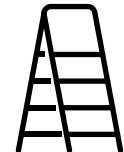
PHILLIPS SCREWDRIVER



PHILLIPS DRILL BIT



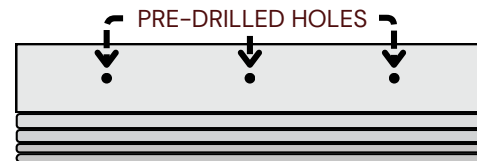
LEVEL



STEP LADDER

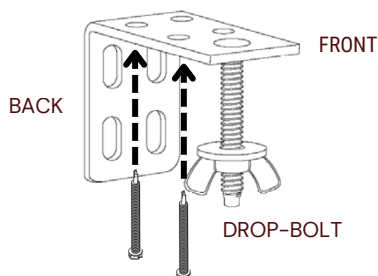
### Quick pointers

- 1 Cordless shades have pre-drilled holes in the top of the headrail. You will use these holes as a guide for your bracket placement.
- 2 If you use your own screws instead of those provided, be sure to pre-drill a small hole with a 5/64" drill bit before the final screws go in to attach brackets.
- 3 If you're using wall anchors, pre-drill with a 1/4" drill bit instead, then tap the wall anchors in place before drilling in the screws.



LEVEL 1 INSTALLATION

## INSIDE MOUNT



1

Hold the shade up to the top of the window and line the front up to make it flush with the wall. Hold the shade in place and make a mark through each hole in the headrail. Set the shade aside.

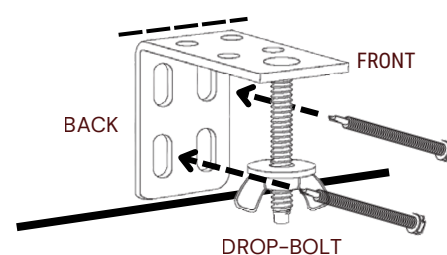
2

Take a bracket and center the drop-bolt over each mark. Use the holes in the top of the bracket to mark screw placement.

3

Align the brackets with the holes, and use a Phillips drill bit to install the screws.

## OUTSIDE MOUNT



1

Center and hold the headrail at least two inches above the window. While keeping the shade level, make a small line with your pencil just above each of the pre-drilled holes in the headrail. Set the shade aside.

2

Align the top edge of a bracket along each mark, and use the holes in the back of the bracket to mark screw placement.

3

Align the brackets with the holes, and use a Phillips drill bit to install the screws.

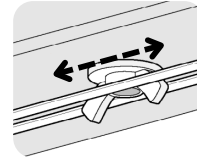
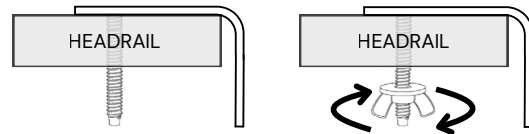
## ATTACHING THE SHADE

1

Remove the wingnuts from the brackets if you haven't done so already.

2

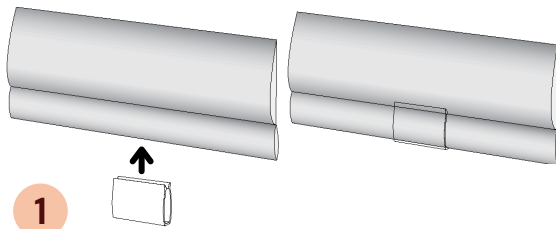
With the front of the shade facing you, fit the pre-drilled holes of the headrail to each of the drop-bolts on the brackets. While holding the headrail to the brackets with one hand, use your other hand to attach each of the wingnuts to the drop-bolts. Tighten the wingnuts until the shade is firmly held in place.



The cords running along the underside of the headrail must be able to move freely.

**To avoid tangling or damage to the cords, make sure the "wings" of the wingnut are facing the sides of the window.**

## ATTACHING THE HANDLE



1

At the bottom pleat of the roman shade, locate the sewn-in hem bar.

2

Clip the handle to the center of the bottom hem bar.

3

To operate, grab the handle with your hand, and gently lift or lower the hem bar; the shade will stay in place when released.

Cordless roman shades come with a clear plastic handle to help protect the fabric over multiple uses.

## CLEANING INSTRUCTIONS

1

For regular maintenance, use a duster or a vacuum with a brush attachment and run it over the front and back of the shade.

2

To spot clean stains, use a damp rag with a very mild, gentle detergent or soap. Dab at the affected spots; **DO NOT RUB!** Let the dampened area air dry and repeat as necessary.

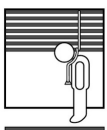
3

If your roman shade has wrinkles, you can use a basic steamer to remove them. Hold the steamer roughly six inches away from the fabric and wave the steamer back and forth over the wrinkled areas.

All fabrics are different and some may be easier to clean than others. We recommend cleaning your shades as often as once a month.



## CHILD SAFETY WARNING



Corded window blinds and shades can be a strangulation risk or cause serious injury to young children and pets. When using corded window treatments, use the following tips to keep them safe:

- NEVER place a crib by a window!
- Move furniture that children can climb on away from the window.
- Secure child-safe tensioners for continuous cord loop chains to the wall or window encasement.
- Always use cord cleats with corded products.
- Keep cords up and away from your child's reach.

# Installation Guide: Roman Shades

Continuous Cord Loop | Motorization

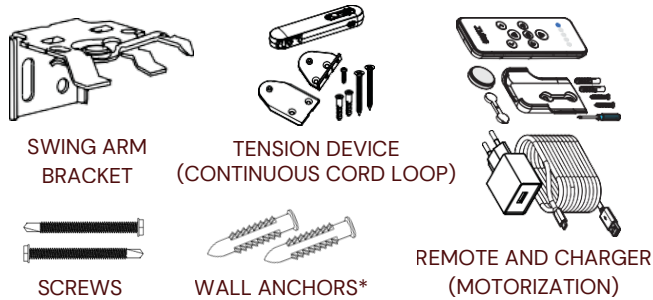


Installation  
Inside Mount



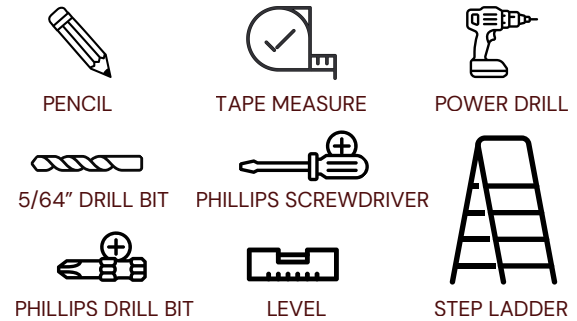
Installation  
Outside Mount

## HARDWARE AND PARTS INCLUDED



\*Recommended if mounting into hollow drywall.

## TOOLS REQUIRED



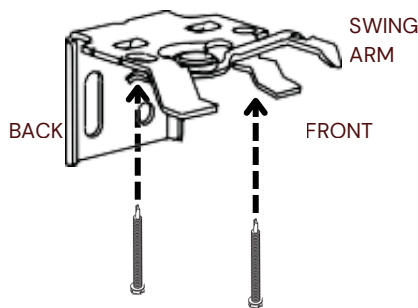
### Quick pointers

- 1 If you use your own screws instead of those provided, be sure to pre-drill a small hole with a 5/64" drill bit before the final screws go in to attach brackets.
- 2 If you're using wall anchors, pre-drill with a 1/4" drill bit instead, then tap the wall anchors in place before drilling in the screws.



LEVEL 1 INSTALLATION

## INSIDE MOUNT



1

Measure 2"-4" from each end of the window frame. Make a mark where the edge of the bracket will be. Position the bracket with the back hanging down like in the image above. Center the bracket over this mark.

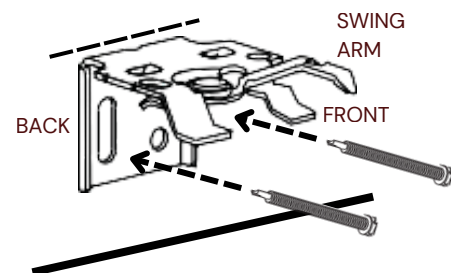
2

Mark through the top hole of the bracket.

3

Align the bracket holes over the marks, and use a Phillips drill bit to install the screws.

## OUTSIDE MOUNT



1

Measure 2"-4" from each side of the window and 2" above the window opening. Mark this as the center point of the bracket. Position the bracket with the back hanging down like in the image above. Center the bracket over this mark.

2

Align the top edge of a bracket centered on the mark. Then mark through the holes on the back of the bracket.

3

Align the brackets over the holes, and use a Phillips drill bit to install the screws.

## ATTACHING THE SHADE

1

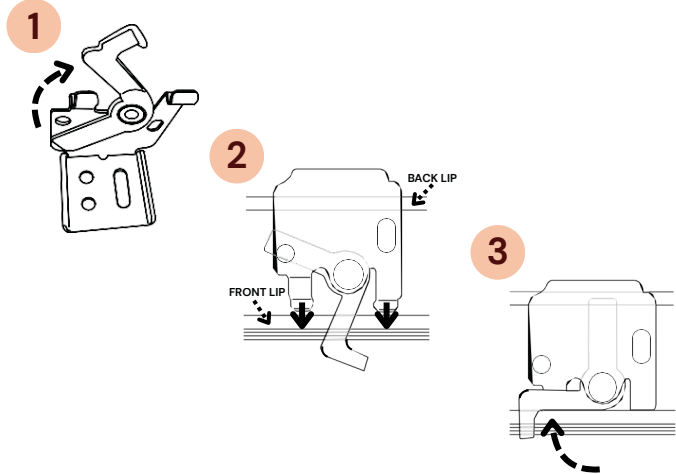
Slide the swing-arm on the brackets to the right.

2

Slide the front lip of the headrail onto the front hooks of the bracket. Tilt the back of the headrail up.

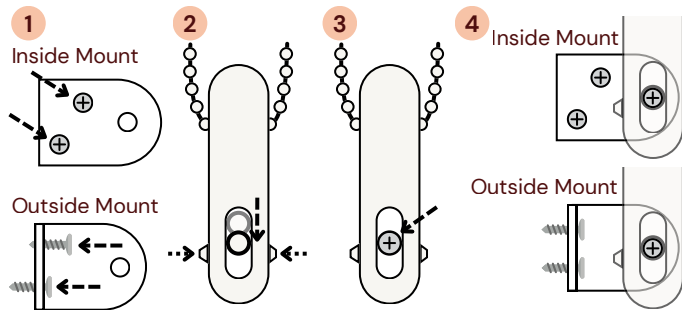
3

Holding the headrail in position, swing the bracket to the left to latch the shade in place.



## INSTALLING THE TENSIONER

Continuous Cord Loop Only



1

First install the bracket to the side of the window opening for Inside mount, or to the wall just outside of the window for Outside Mount.

2

Press the two buttons on the outside of the tension device, then pull down the screw hole lock using a pencil or pen.

3

With the screw hole lock moved down, place a screw in the hole.

4

Line the screw up with the "nub" on the bracket (on the rounded side of the bracket) and then insert the screw and tighten it. Test to ensure the cord is loose enough for operation, but tight enough for safety.

## CLEANING INSTRUCTIONS

1

For regular maintenance, use a duster or a vacuum with a brush attachment and run it over the front and back of the shade.

2

To spot clean stains, use a damp rag with a very mild, gentle detergent or soap. Dab at the affected spots; DO NOT RUB! Let the dampened area air dry and repeat as necessary.

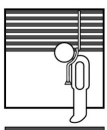
3

If your roman shade has wrinkles, you can use a basic steamer to remove them. Hold the steamer roughly six inches away from the fabric and wave the steamer back and forth over the wrinkled areas.

All fabrics are different and some may be easier to clean than others. We recommend cleaning your shades as often as once a month.



## CHILD SAFETY WARNING



Corded window blinds and shades can be a strangulation risk or cause serious injury to young children and pets. When using corded window treatments, use the following tips to keep them safe:

- NEVER place a crib by a window!
- Move furniture that children can climb on away from the window.
- Secure child-safe tensioners for continuous cord loop chains to the wall or window encasement.
- Always use cord cleats with corded products.
- Keep cords up and away from your child's reach.

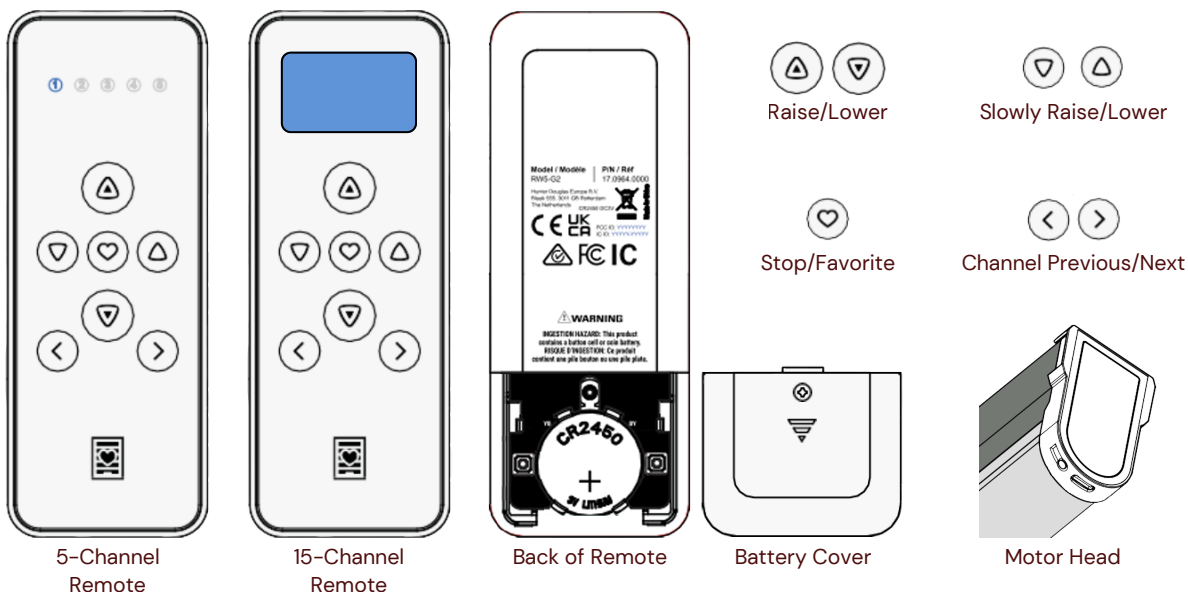
# PROGRAMMING AND USING THE REMOTE

## Motorization Only

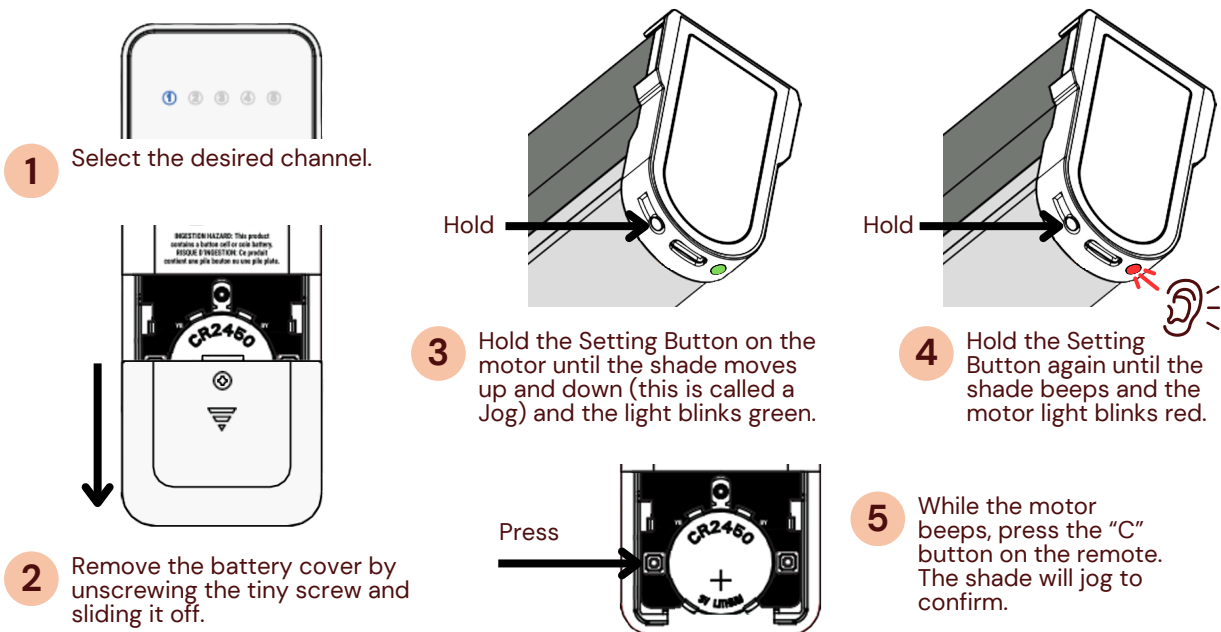
### Quick pointers

The Motorized Shades are pre-programmed and arrive in Sleep Mode. Please wake the motor before attempting pairing and operation. These also will arrive with only 30% charge for safety reasons, so you may need to charge the product fully before first use.

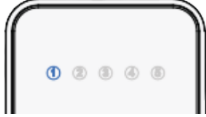
Press and Hold the Setting Button for 6 Seconds until you hear the motor move and the lights on it flash red 4 times.

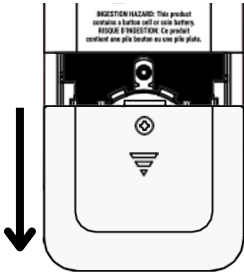


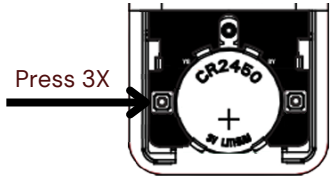
## PAIRING THE REMOTE



## REMOVING A SHADE FROM A CHANNEL

- 

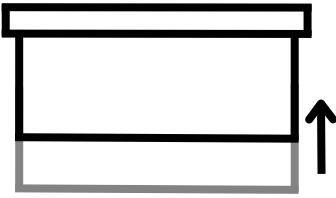
1 Select the desired channel.
- 

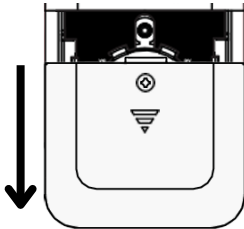
2 Remove the battery cover by unscrewing the tiny screw and sliding it off.
- 

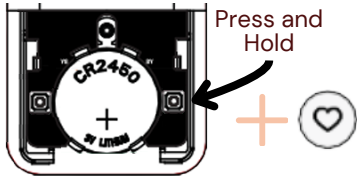
3 Press the "C" button quickly 3 times. The shade will jog and blink green to confirm.

## SETTING AND REMOVING THE FAVORITE POSITION

### Setting the Favorite

- 

1 Set the shade to the desired Favorite Position.
- 


2 Remove the battery cover by unscrewing the tiny screw and sliding it off.
- 

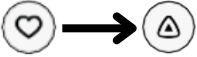
3 Press and hold the "L" Button, then quickly press and hold the Heart Button. The shade will beep and blink green to confirm.


### Removing the Favorite

- 1 Press the Heart button to move the shade to the Favorite Position.
- 2 Follow steps 2-3 above to remove the shade's favorite.
- 3 Repeat steps for setting the Favorite Position above to set the new Favorite Position.

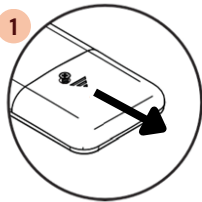
### Change Motor Speed

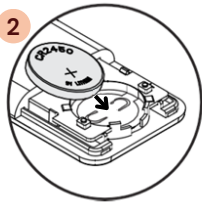
- 

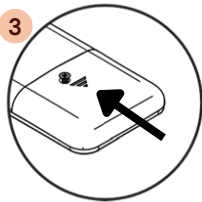
1 Ensure the remote is on the channel desired.
  - 

2 Hold the Heart button, then press the Up Button quickly. The Green light on the shade will blink confirmation.
-   
 3 Speeds: Standard, Comfort and Slow.

### Changing the Battery

- 

1 Unscrew the small screw on the back battery cover and slide it off.
- 

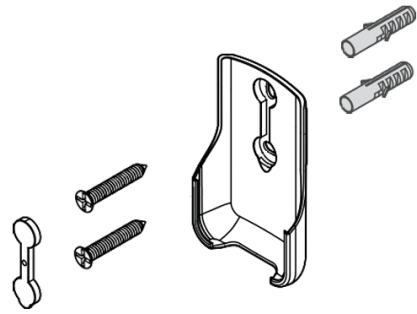
2 Remove the old battery, and then install the new one with the Numbers and + sign facing up. Make sure it clips into the socket.
- 

3 Slide the battery cover back on and tighten the screw to secure it.

## INSTALLING THE REMOTE'S WALL MOUNT

### Optional

- 1 Find a spot where you would like to place the remote mount.
- 2 Mark where you will drill the screws and install the optional anchors. Screw the screws through the holes.
- 3 After they're installed, insert the cap over the screws.



## TUISS SMARTVIEW APP

### Downloading and Accessing the App

- 1 Search for the Tuiss SmartView app in the App Store or Google Play Store or Scan the QR code on the front of the swing label attached to your shades.
- 2 Open the app and follow the steps to Create an Account.
- 3 Tap Continue. When you open the app for the first time, you'll be asked by SmartView to use your phone's Bluetooth. Enable this and then continue.

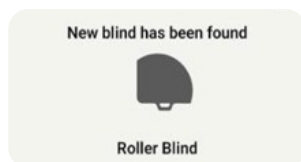


### Quick pointers

### Waking the Shade

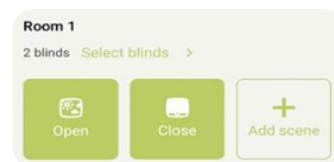
Wake the motor up by pressing and holding the Setting Button on the motor for 6 seconds. The light will flash 4 times. If you've already woken the motor to add the remote, you can skip this step.

### Adding the Shade



- 1 Select "Add my first Blind". Scan the QR code on the Back of the swing label.
- 2 The blind will jog or move up and down briefly to acknowledge pairing.
- 3 Press "Found it!" and it will jog to confirm pairing.
- 4 Press Save, then Done if you have no further shades. If you want to add another, select "Add new Blind"

### Operation



Selecting Open will move the shade to the top limit and Close to the bottom limit.

All shades assigned to the same room will move simultaneously.

To move individual shades, press the "Select blinds" option and then tick the box for the shade you'd like to use.

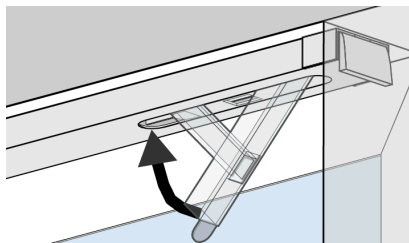
Drag the shade up or down to precisely position your shade.



# CLICK2FIT INSTALLATION

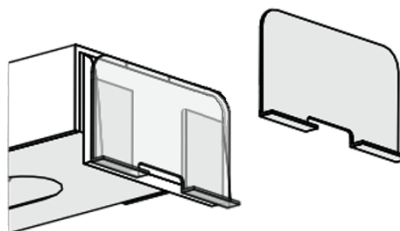
## Installation and Removal

- 1 Hold the Click2Fit up against the top of window opening and make it flush with the window opening. Push the lever upwards until you hear the rail click in place.
- 2 Should you need to remove the Click2Fit headrail, uninstall the shade from the headrail. Use a flat-head screwdriver to unlatch the lever. Make sure to hold the headrail while unlatching the lever and cushion the lever as it unlatches. This will prevent damage to the window and headrail.



## Optional Metal Plate

- 1 Uninstall the shade from the Click2Fit headrail. Pull the lever from below to retract the tension block.
- 2 Peel the adhesive tape off of the back of the metal strip and attach it with the tabs at the bottom.



# BUILT-IN CLICK2FIT INSTALLATION

## Quick pointers

The Built-In Click2Fit will already be attached inside the product. Please don't attempt to remove it to ensure the product operates correctly.

- 1 Hold the shade's headrail up to the top of the window opening and make it flush with the window. Push the lever up until it snaps in place.
- 2 To remove the shade, use a flat-head screwdriver to unlatch the lever. Make sure to hold the headrail in place when unlatching the lever; this will protect the window and shade.

