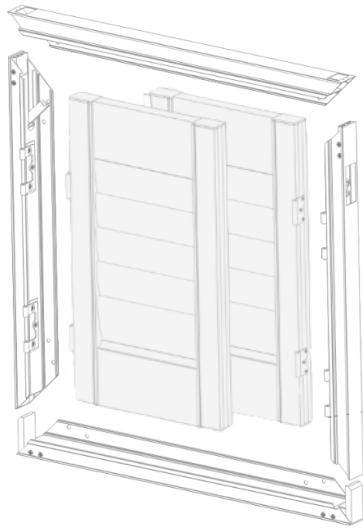


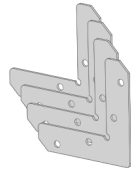
Click2Fit No-Drill Shutters

Install Guide

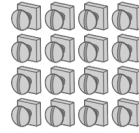
PARTS INCLUDED



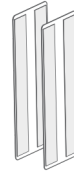
Panels, Frames, and
Frame Covers



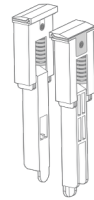
Corner Plates



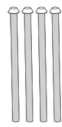
Corner
Plate Bolts



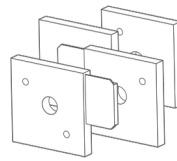
Cutout
Covers



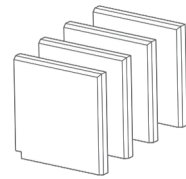
Click2Fit
Boot



Pins



Corner Cover
Base Plates



Corner Covers



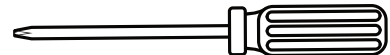
This is a Level 2 Install.

Optional



Additional
Person for Help

TOOLS NEEDED



Philips Screwdriver

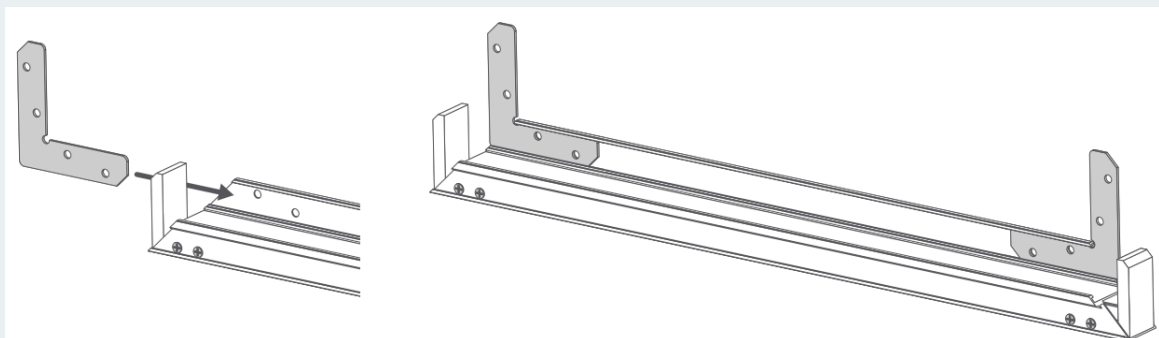


Flathead Screwdriver

Installation

Frame Assembly

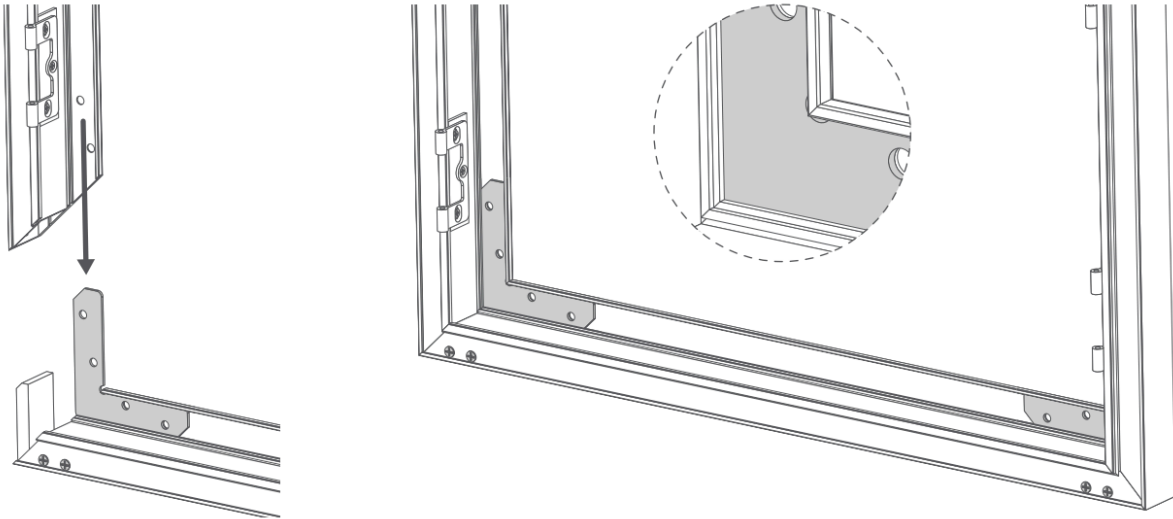
Slot 2 Corner Brackets into the bottom frame piece (this one has a preexisting corner connector on each side). These will slide into the channels on the Left and Right Frame Pieces.



Click2Fit No-Drill Shutters

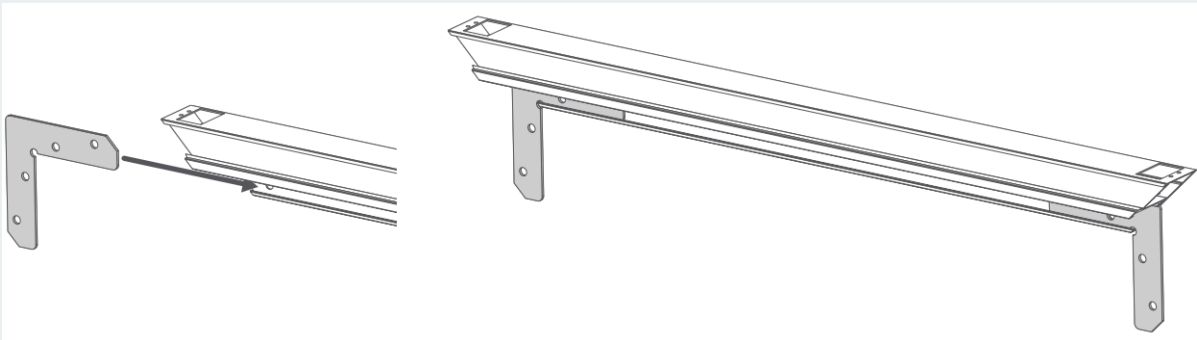
Install Guide - Frame Assembly Cont.

Slide the Left and Right Frame Pieces into the same channel that the Corner Plates were installed.

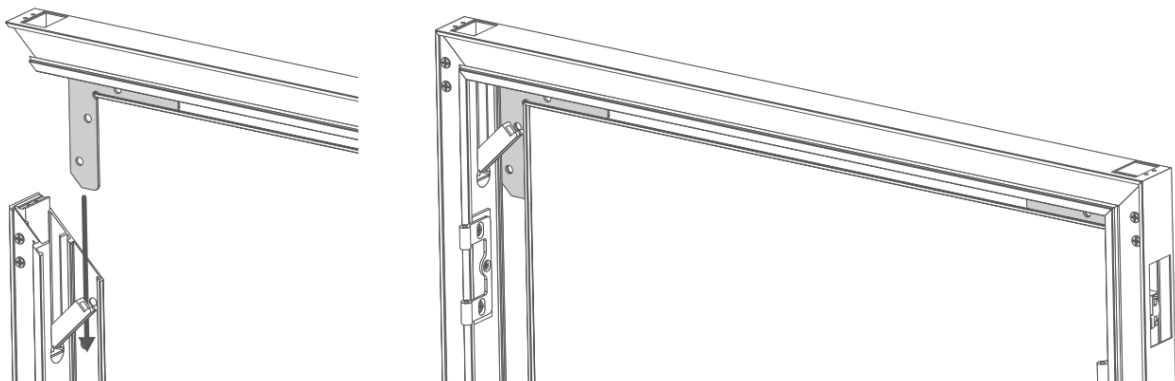


The Left and Right Panels should slide down to fit onto the preinstalled corner connector.

Slide the other 2 Corner Plates into the Top Frame Piece (this should have a hole in the top left and right).



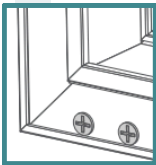
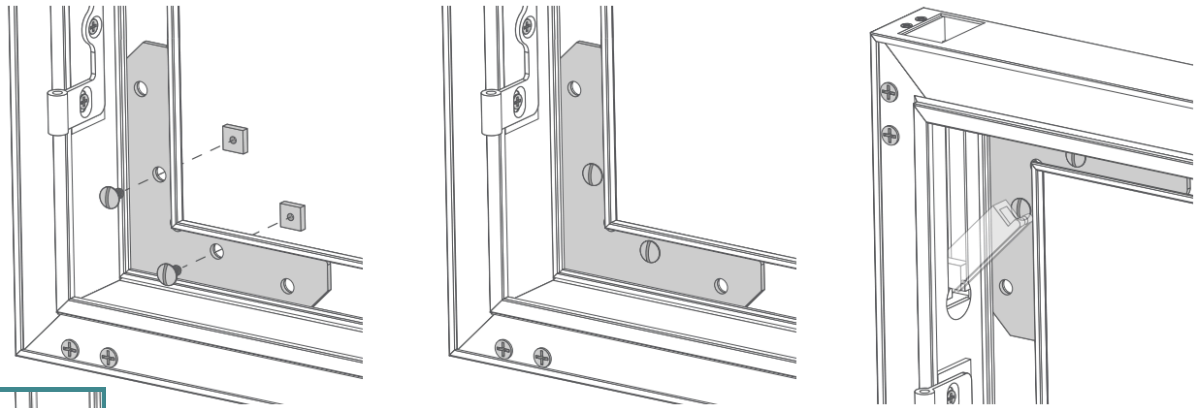
Slot the Top Frame into the top of the Left and Right Frame Pieces.



Click2Fit No-Drill Shutters

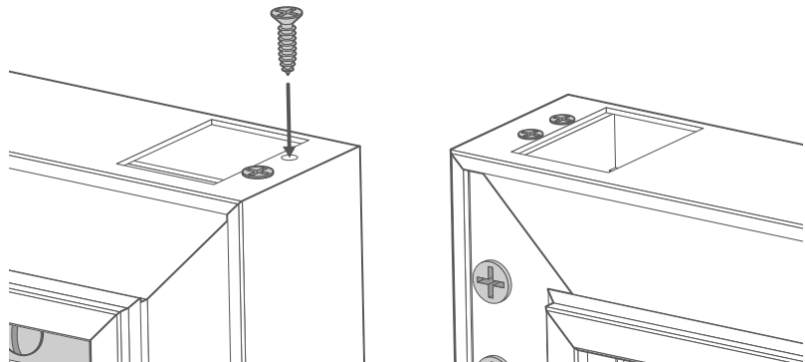
Install Guide - Frame Assembly Cont.

Use the Corner Plate Bolts to fully secure the Corner Plates with the predrilled holes. Only 2 Bolts are required per plate, however if you want a more secure fit, use all 4 bolts.

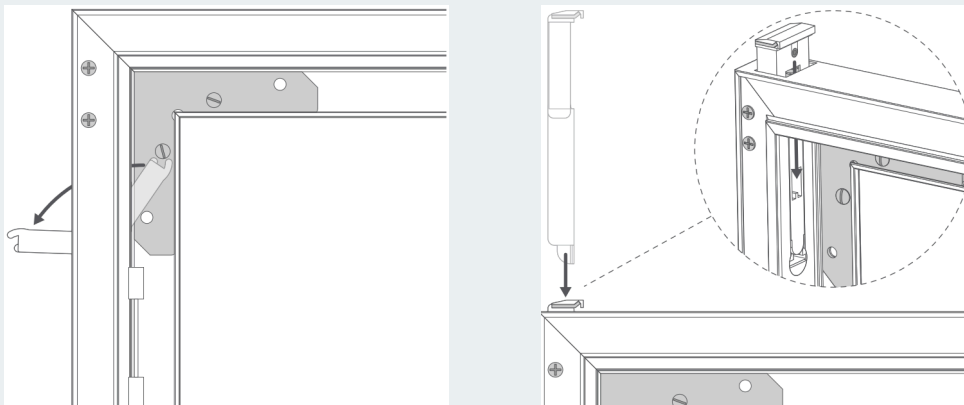


While tightening the bolts, hold the frames in place to ensure they are square.

Screw the top corners in place using the Philips Screws.



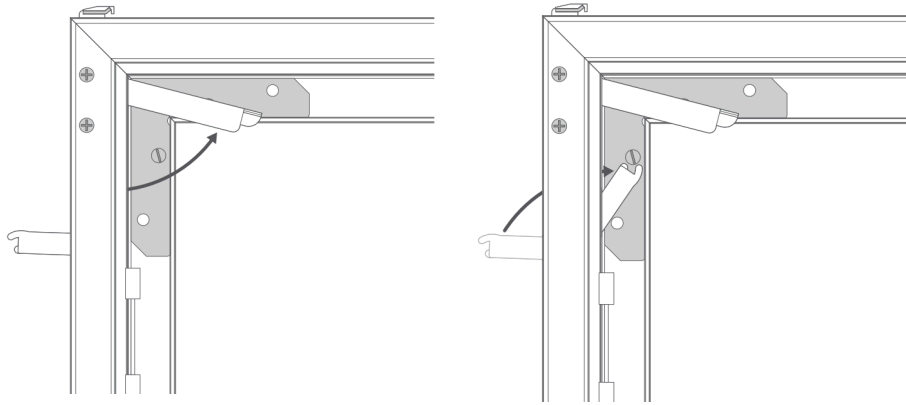
Installing the Click2Fit Boot



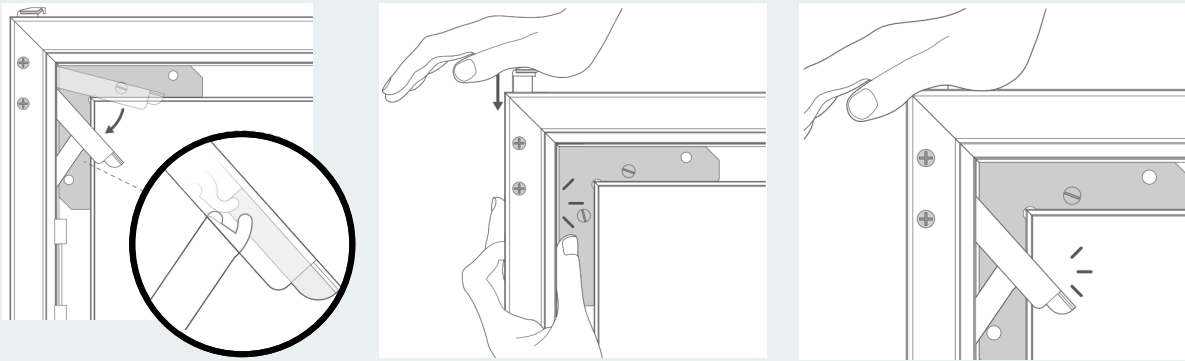
Push the lever arm out away from the center of the frame. Then slide the Click2Fit Boot down into the channel on the top of the frame.

Click2Fit No-Drill Shutters

Install Guide - Frame Assembly Cont.



Swing the Click2Fit Boot lever inward towards the inside of the frame. Then swing the lever arm from the outside of the frame inward towards the inside of the frame.

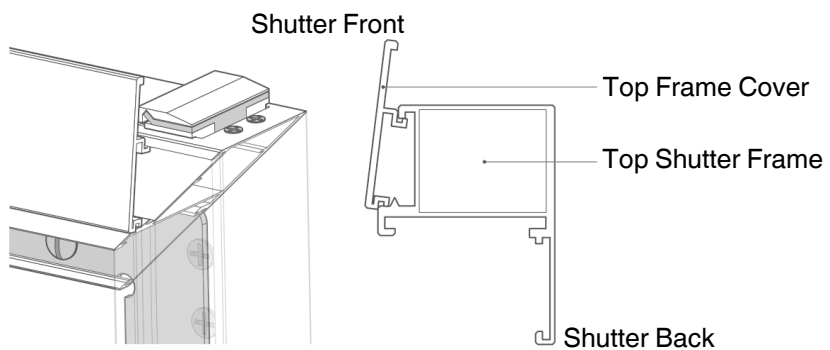


Join the Click2Fit Boot to the lever with the Boot Lever on top of the Frame Lever. Push the lever inward toward the frame so that it snaps in place. Then push the lever back inside the frame (you may need to push the boot down to help pop the lever back out).

If you pull the lever arm and Frame Lever dislodges, try the above steps again to connect them.

Attach the Frame Covers

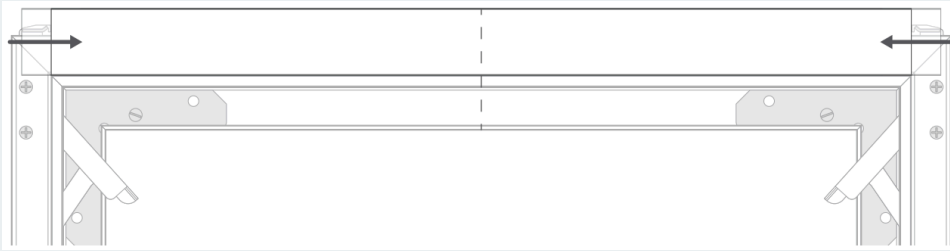
Take the top Frame Cover and hook the upper lip on the back of the frame cover under the matching lip on the frame. See the diagram to the right.



Note - Each of the Frame Covers is Labeled: Top, Left, Right, and Bottom.

Click2Fit No-Drill Shutters

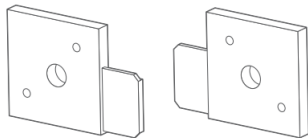
Install Guide - Frame Assembly Cont.



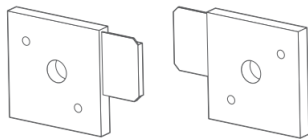
Adjust the cover left or right to center it on the frame.

Continue to do this step to the Left, Right, and Bottom Frame Pieces.

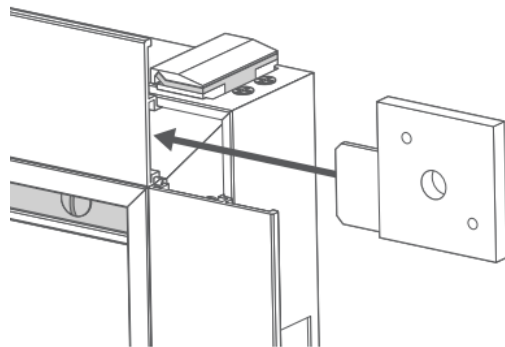
Top Left Top Right



Bottom Left Bottom Right

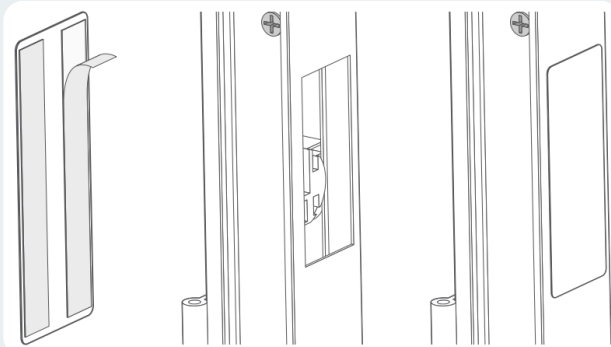


Use the Frame Corner Plates (seen above).



Insert a Corner Plate into each Frame Cover for each respective corner.

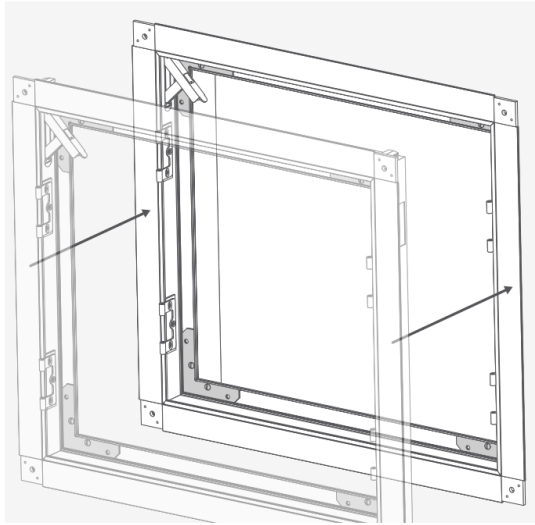
Optional



Peel the adhesive off of the Cutout Cover and install it over the hole. This is usually hidden against the wall when installed, so this is optional.

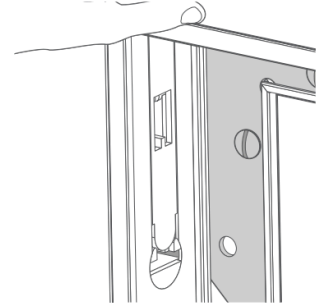
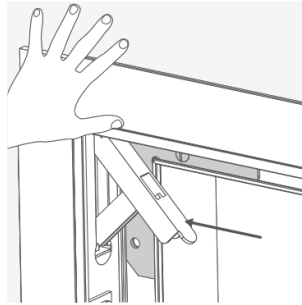
Click2Fit No-Drill Shutters

Install Guide - Installing the Frame & Panels



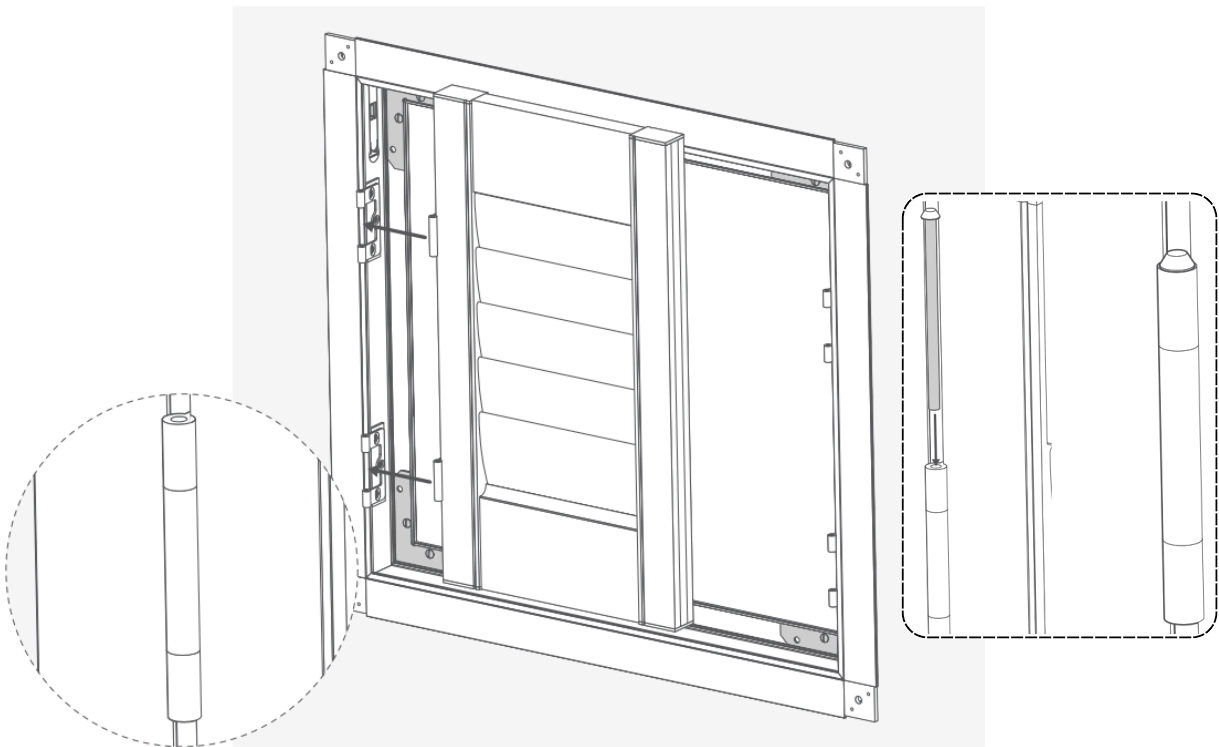
Slide the Frame into the window opening.

While holding the Frame in place against the window edge, press the lever down and lock it in place. Do this on each side.



Note - Make sure to have the levers open before sliding the frame into the opening. This may be the point where you would need a second set of hands.

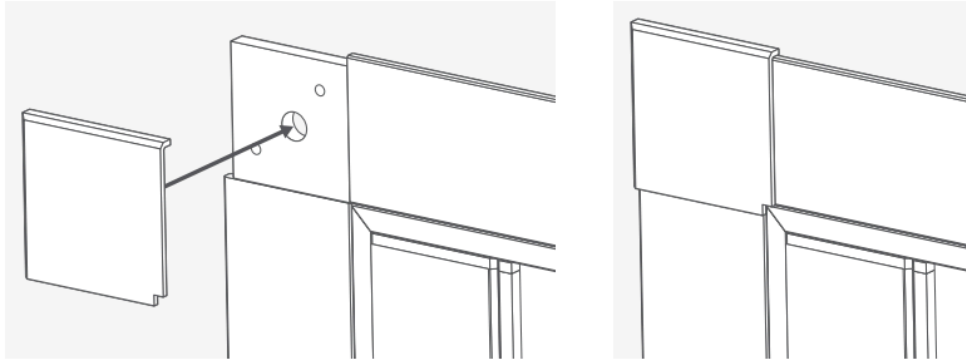
Installing the Panels



With the hinges sticking out towards you, slide a panel into the frame so that the hinges align (the panel hinge should slide into the frame hinge). Slide the Hinge Pins into the hinges to lock them in place.

Click2Fit No-Drill Shutters

Install Guide - Installing the Frame & Panels



Peel the adhesive strip from the back of each Corner Cover.
Put one over each Corner Cover Base Plate of the frame.

Test out operation from there. Congratulations! You've installed your Click2Fit No-Drill Shutters!

Cleaning: The panels and frames can be wiped clean with a damp sponge.