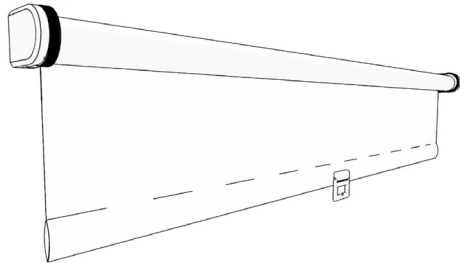


INSTALLATION INSTRUCTIONS

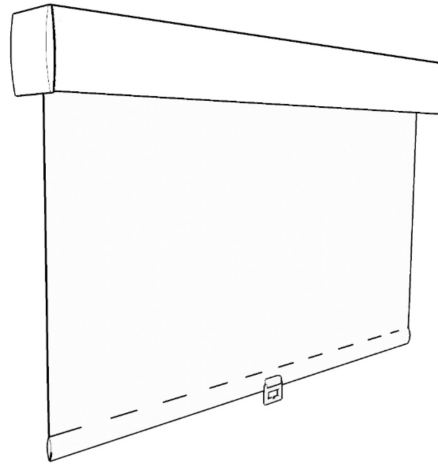
Lifestyle SolarShades

Cordless

Open Roll

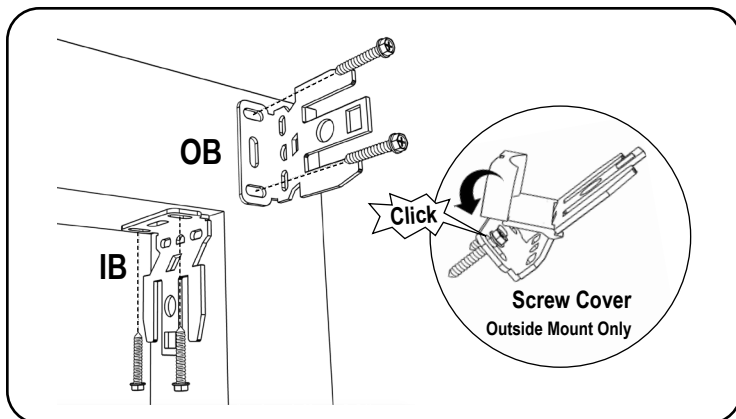


Deco Fascia



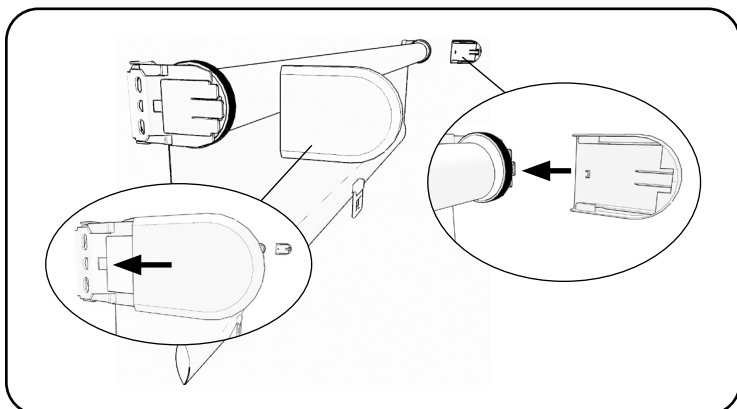
Cordless Operated with Open Roll

1. Install the Brackets

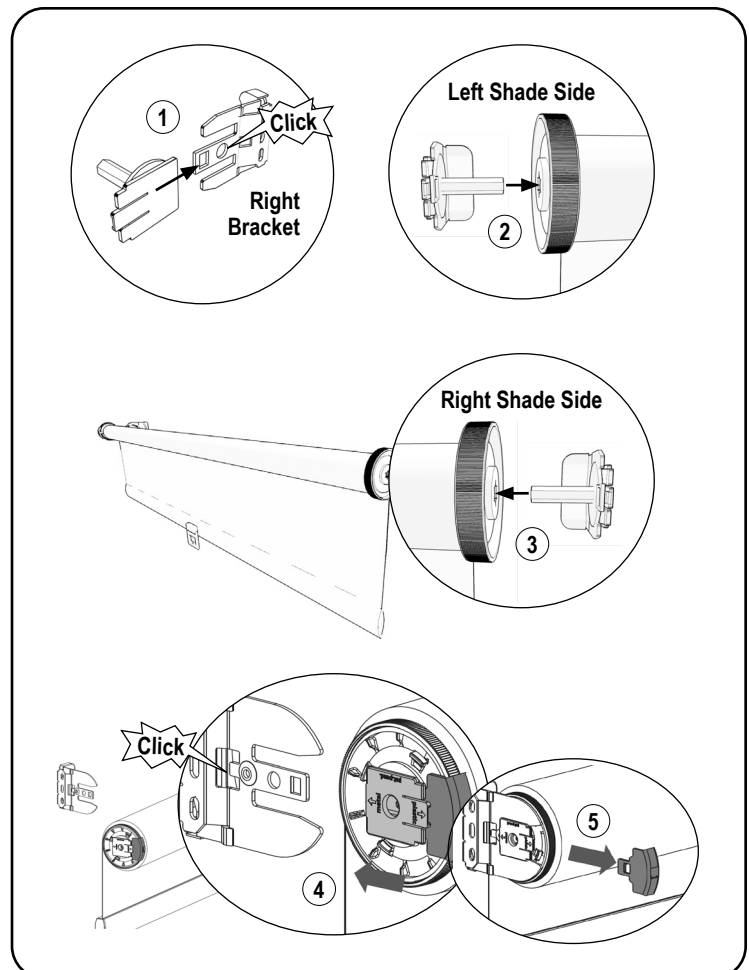


Secure the roller shade installation brackets with the supplied screws. If shade was ordered as outside mount (OB), attach the supplied screw covers on to the bracket for a finished look.

3. Install the Bracket Covers (if applicable)



2. Install the Shade

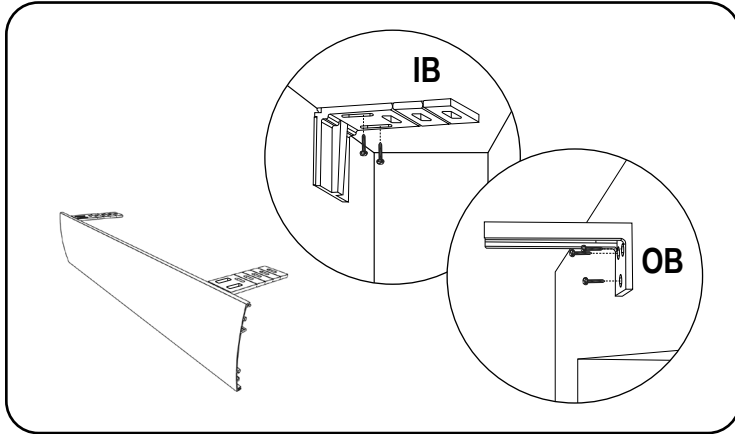


DO NOT REMOVE THE RED PLASTIC CLIP. IT WILL DISENGAGE ONCE THE BRACKET HAS BEEN INSTALLED.

INSTALLATION INSTRUCTIONS

Cordless Operated with Deco Fascia

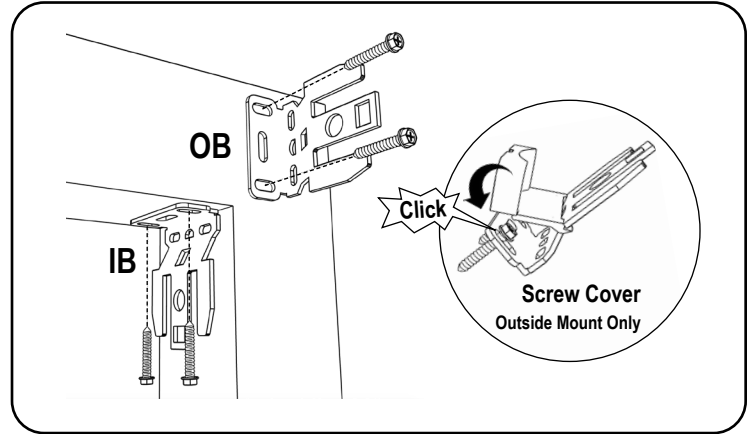
1. Install the Fascia Brackets



Outside mount (OB) requires a T-Bracket installation. Space brackets evenly.

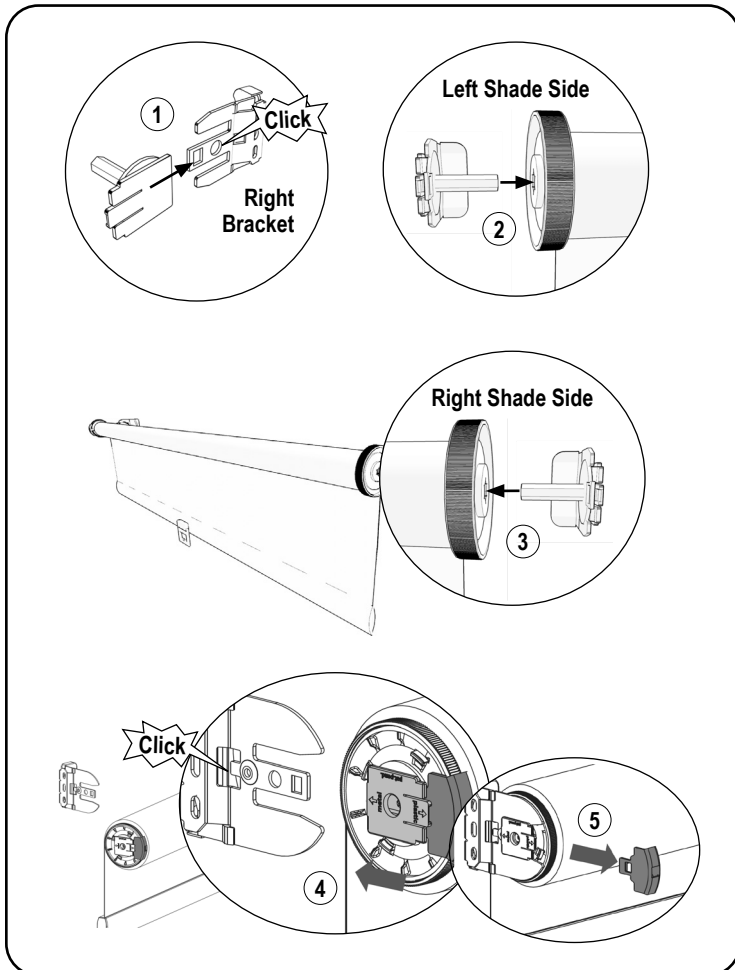
Note: Do not attach the Deco Fascia until the shade has been installed.

2. Install the Brackets



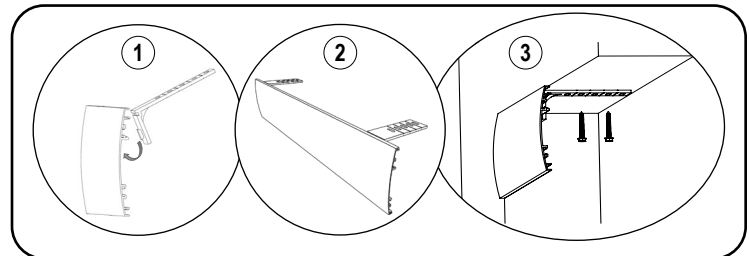
Secure the roller shade installation brackets with the supplied screws. If shade was ordered as outside mount (OB), attach the supplied screw covers on to the bracket for a finished look.

3. Install the Shade

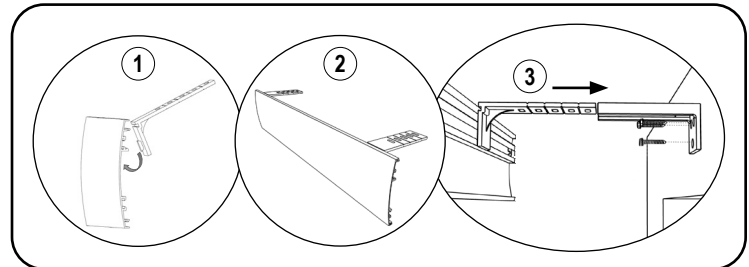


DO NOT REMOVE THE RED PLASTIC CLIP. IT WILL DISENGAGE ONCE THE BRACKET HAS BEEN INSTALLED.

4. Install the Deco Fascia

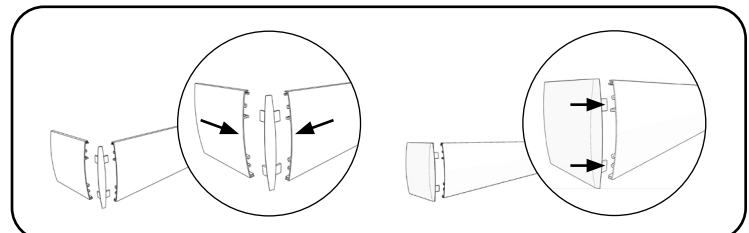


Inside Mount (IB)



Outside Mount (OB)

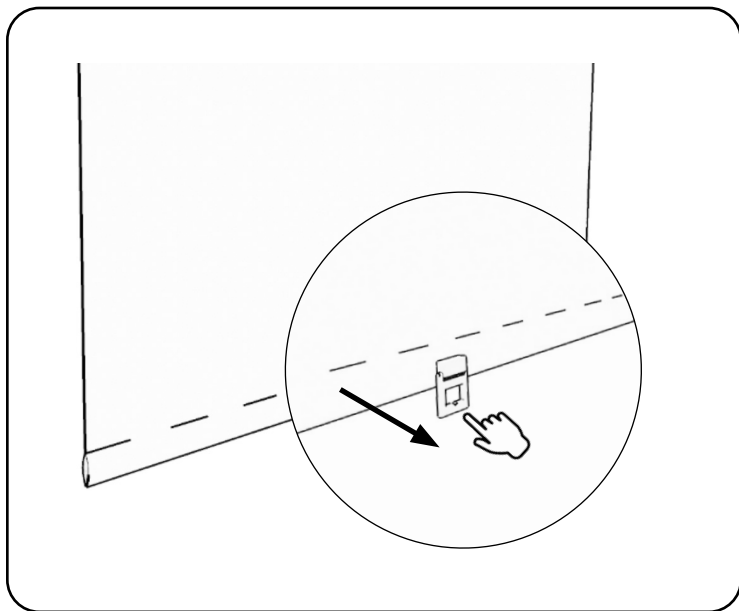
5. Install the Returns (Optional)



Metal returns (Outside mount only) include a plastic corner connector. Plastic returns (Inside mount with Outside Mounted fascia) snap on the end of the fascia.

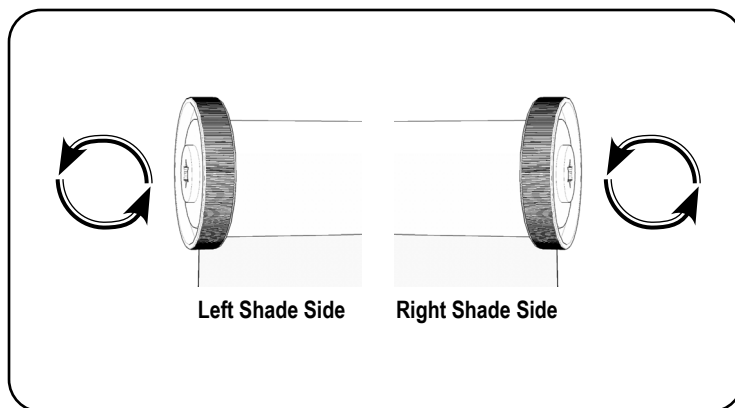
INSTALLATION INSTRUCTIONS

Operate the Cordless Shade



Pull the bottom handle and let go to lock it into the desired length.

Adjust the Tensioner



To **lower tension or speed**, turn the left side wheel towards the back of the shade. To **add tension or speed**, turn the left side wheel towards the front of the shade while holding the bottomrail.

To **shorten the length** of the shade, turn the right side wheel towards the front of the shade. To **lengthen the shade**, turn the right side wheel towards the back of the shade.

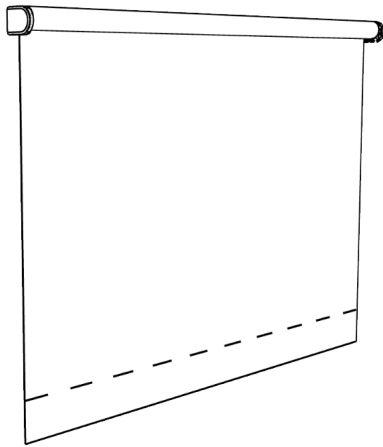


INSTALLATION INSTRUCTIONS

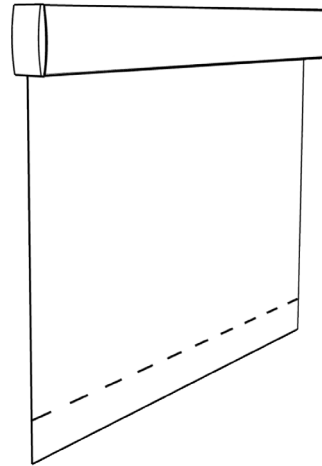
Lifestyle Solar Shades

Motorized

Open Roll



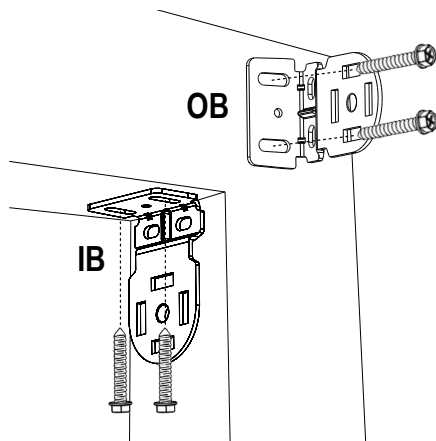
Deco Fascia



Important: Prior to installing the shade, pair the remote using the instructions included with the remote. Do not set the upper and lower limits until the shade is installed.

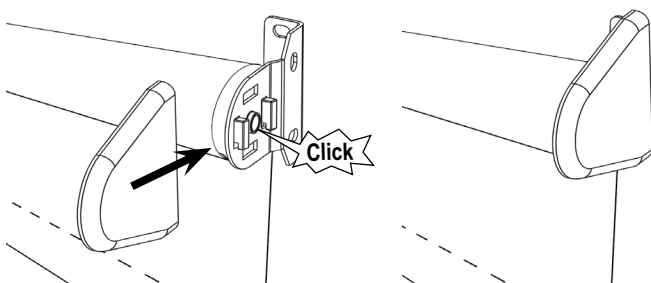
Motorized with Open Roll

1. Install the Brackets

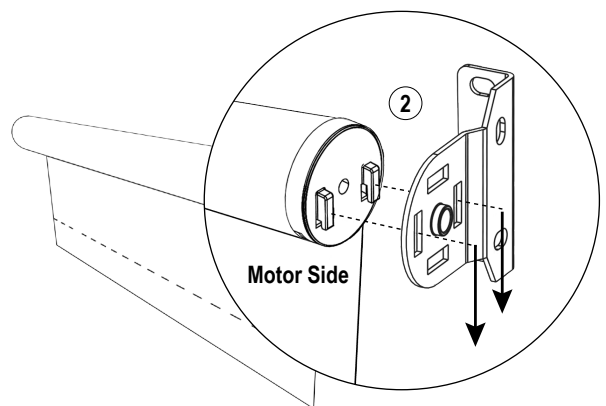
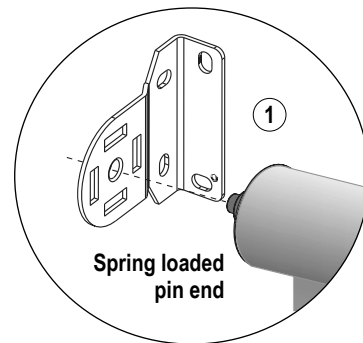


Secure the roller shade installation brackets with the supplied screws. If shade was ordered as outside mount (OB), attach the supplied screw covers on to the bracket for a finished look.

3. Install the Bracket Covers (if applicable)



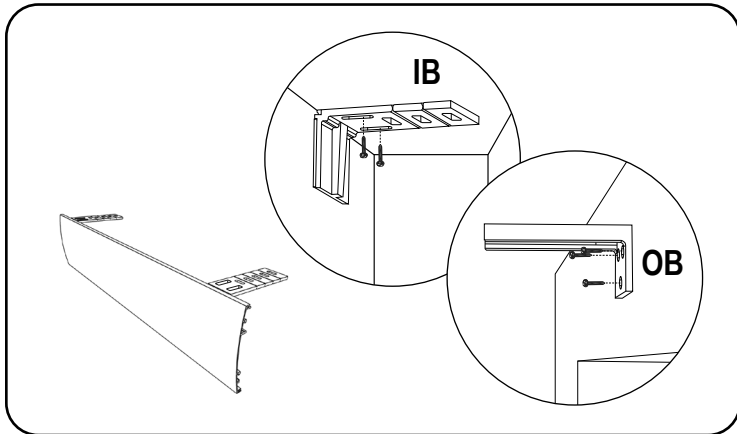
2. Install the Shade



INSTALLATION INSTRUCTIONS

Motorized with Deco Fascia

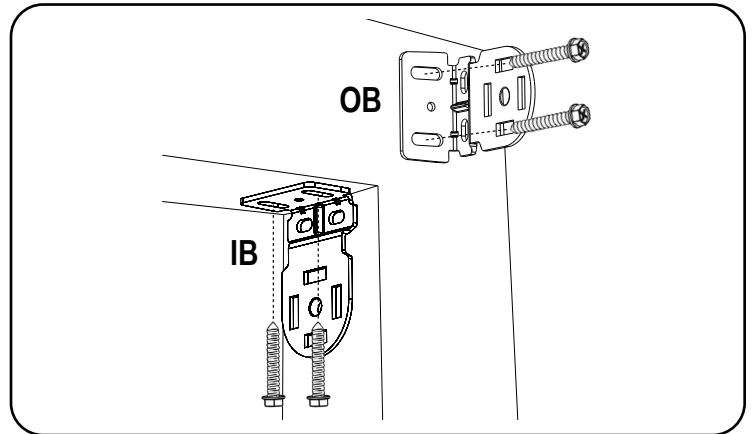
1. Install the Fascia Brackets



Outside mount (OB) requires a T-Bracket installation. Space brackets evenly.

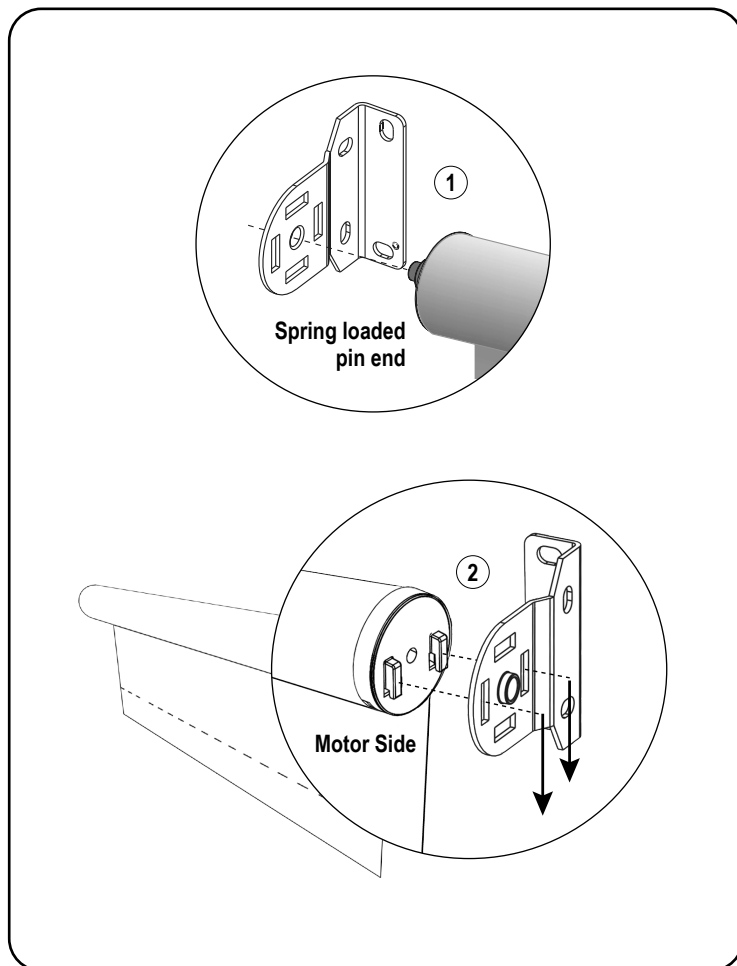
Note: Do not attach the Deco Fascia until the shade has been installed.

2. Install the Brackets

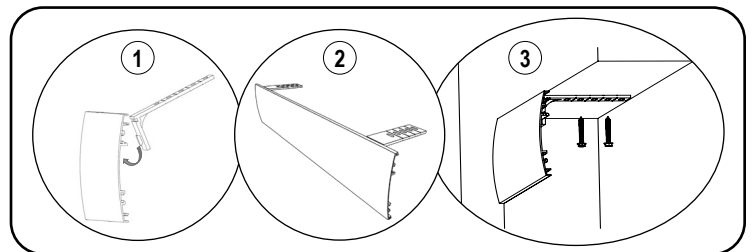


Secure the roller shade installation brackets with the supplied screws. If shade was ordered as outside mount (OB), attach the supplied screw covers on to the bracket for a finished look.

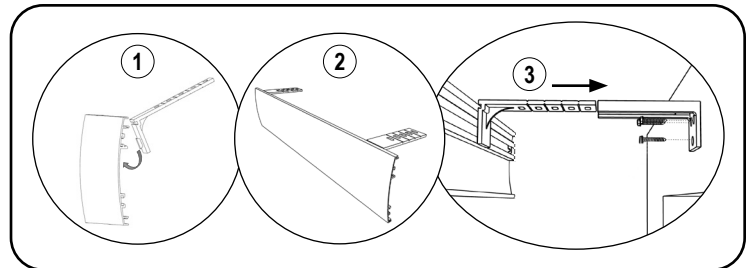
3. Install the Shade



4. Install the Deco Fascia

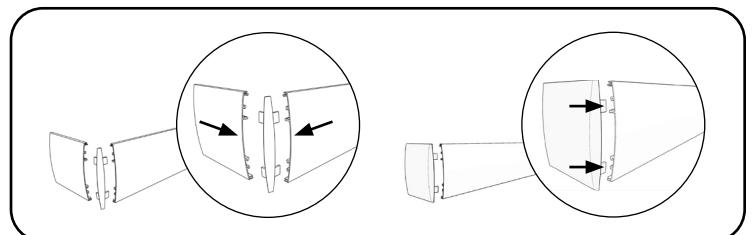


Inside Mount (IB)



Outside Mount (OB)

5. Install the Returns (Optional)



Metal returns (Outside mount only) include a plastic corner connector. **Plastic returns** (Inside mount with Outside Mounted fascia) snap on the end of the fascia.