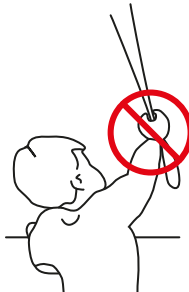


Installation Instructions - Cassette

Read the instructions carefully before assembling and using the product. Assembling process can be completed by non-professionals. For indoor use only.

WARNING

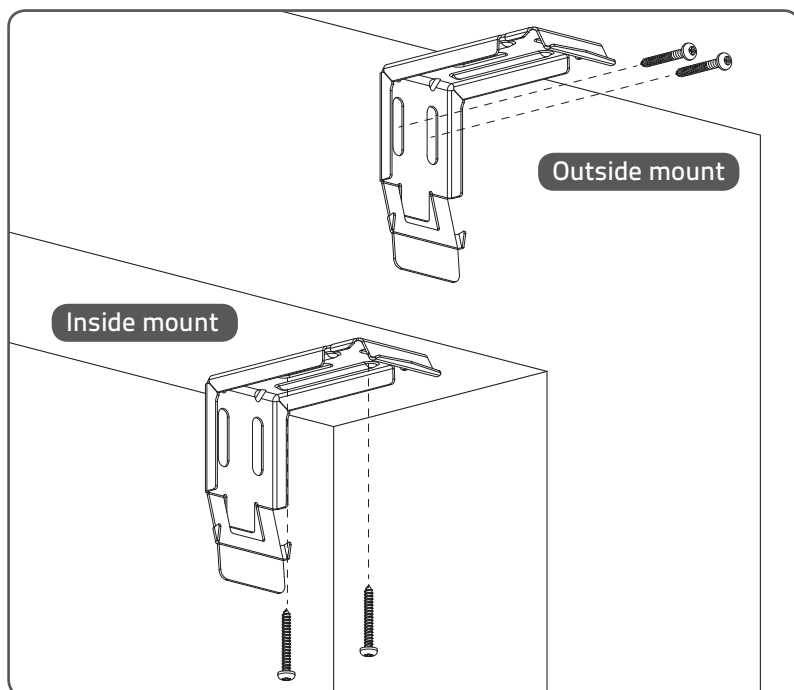
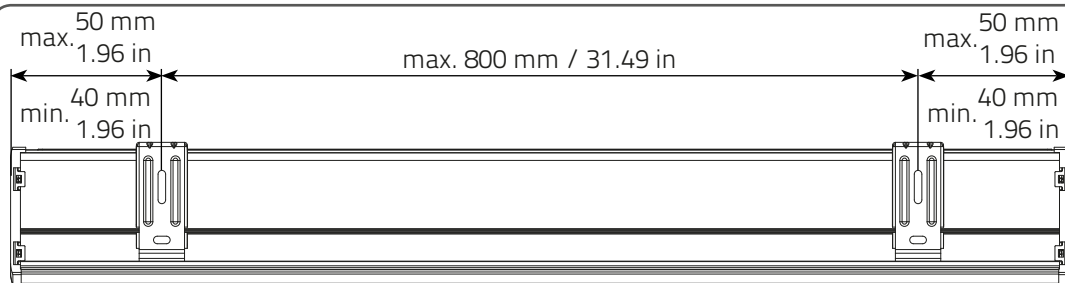
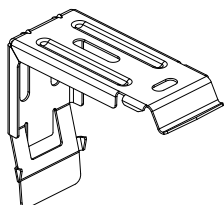
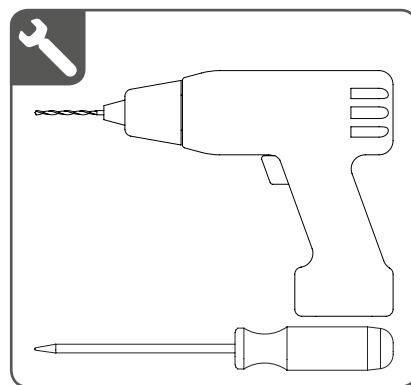
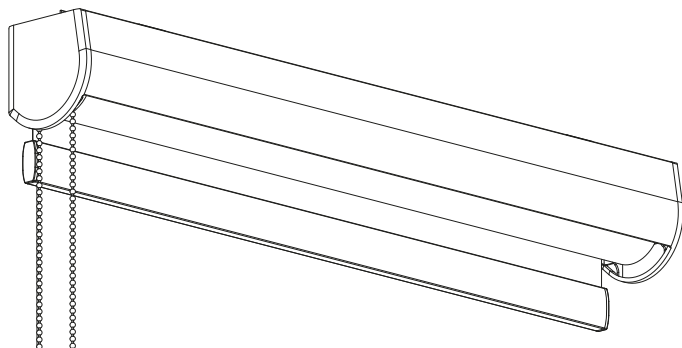
- Young children can strangle in the loop of pull cords, chains and tapes, and cords that operate window coverings.
 - To avoid strangulation and entanglement, keep cords out of the reach of young children. Cords may become wrapped around a child's neck.
 - Move beds, cots and furniture away from window covering cords.
 - Do not tie cords together.
- Make sure cords do not twist together and form a loop.

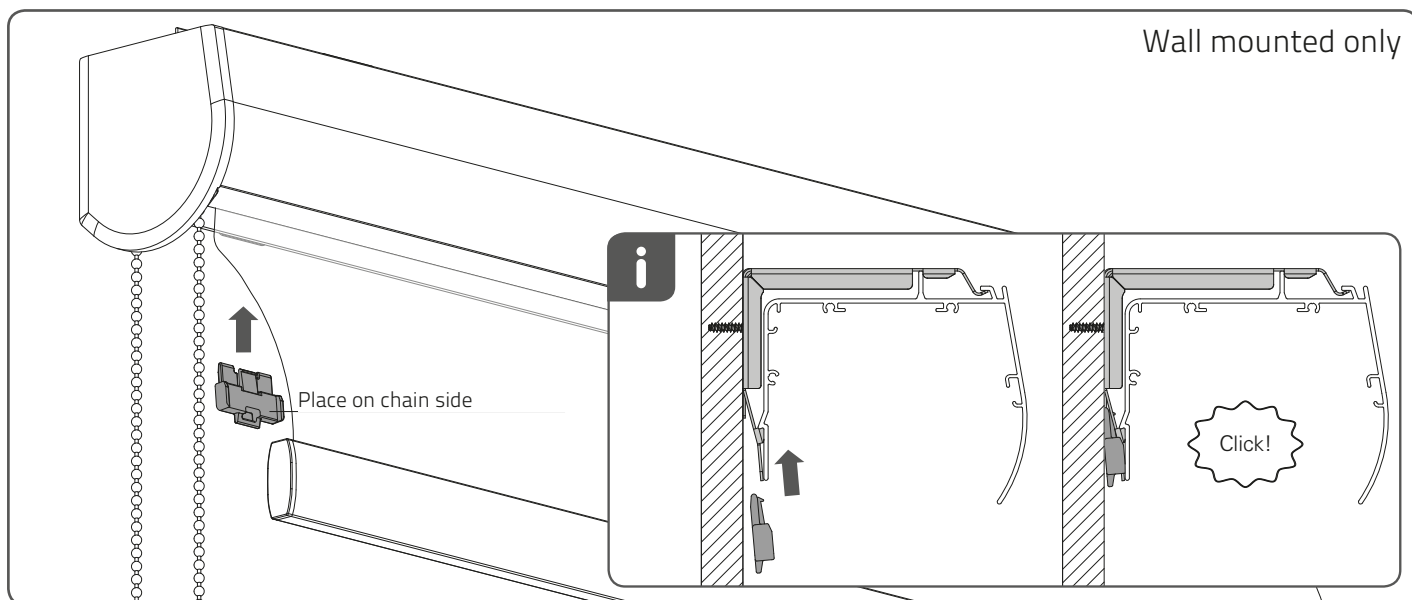
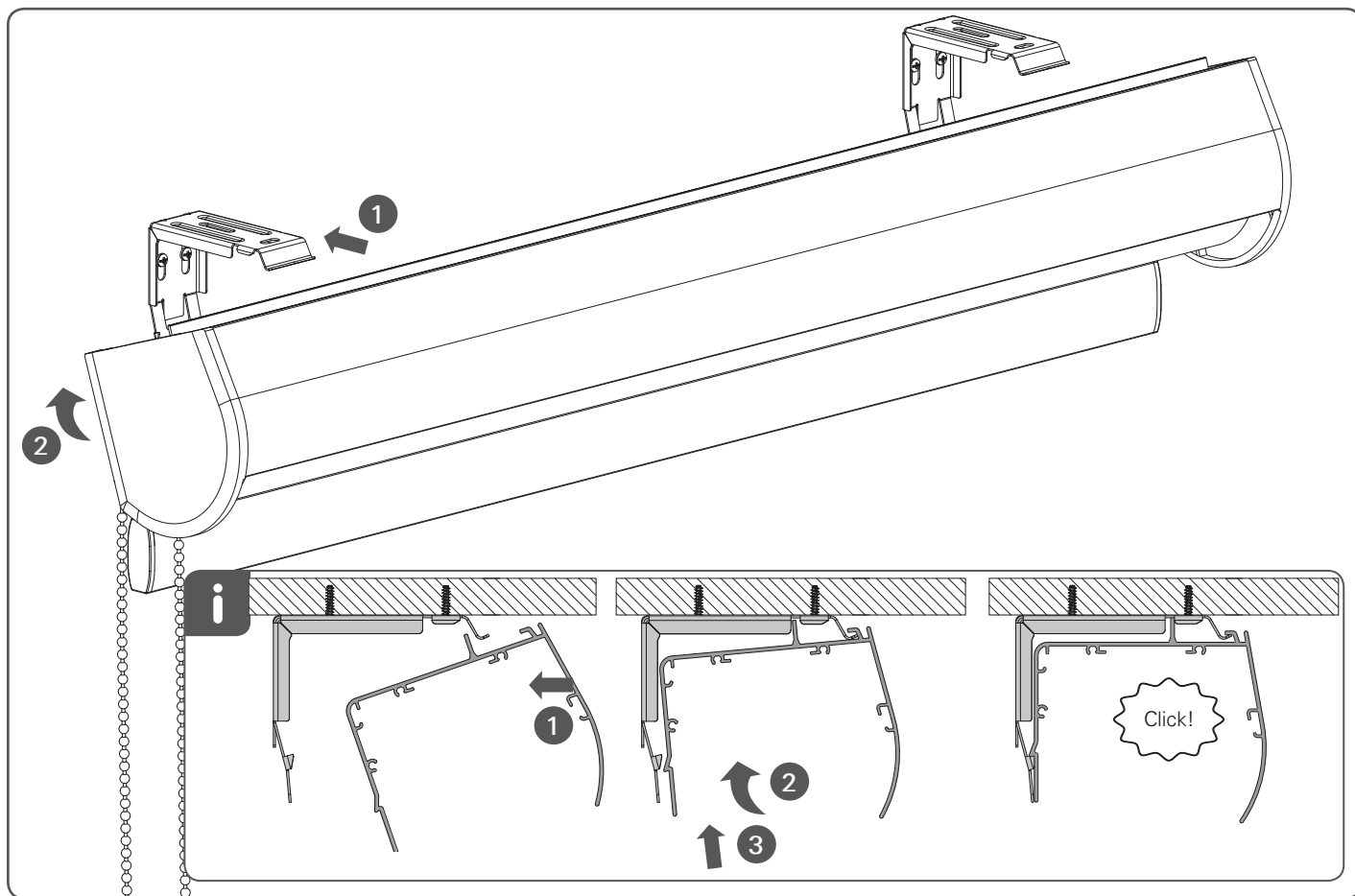


QR



rtube.nl/red235



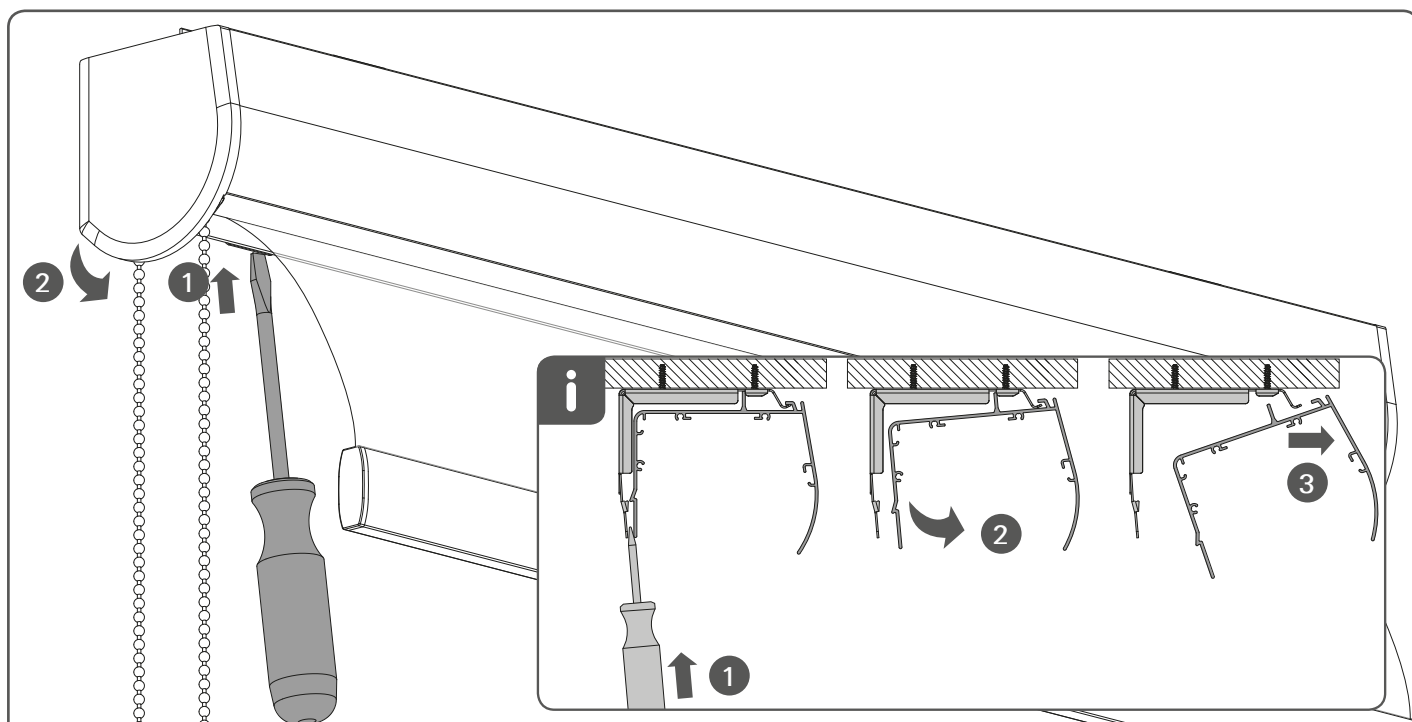


⚠ WARNING

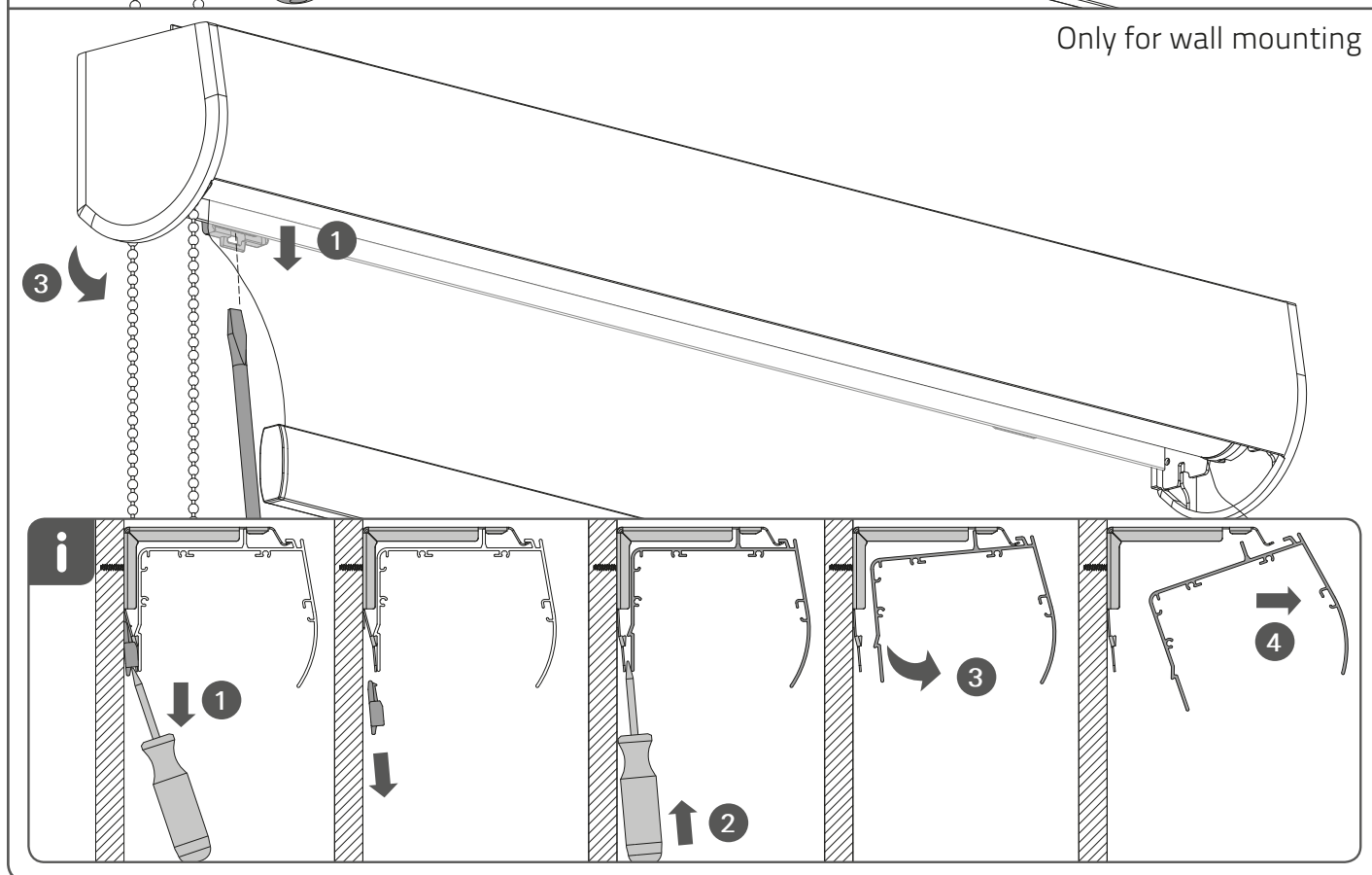
Install the child safety device as specified in the chilsafe manual.



Removal



Only for wall mounting



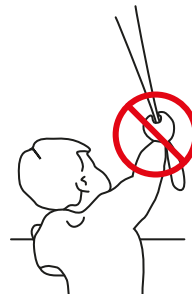
INSTALLATION INSTRUCTIONS - STANDARD BRACKETS

Installation

Read the instructions carefully before assembling and using the product.
Assembling process can be completed by non-professionals. For indoor use only.

WARNING

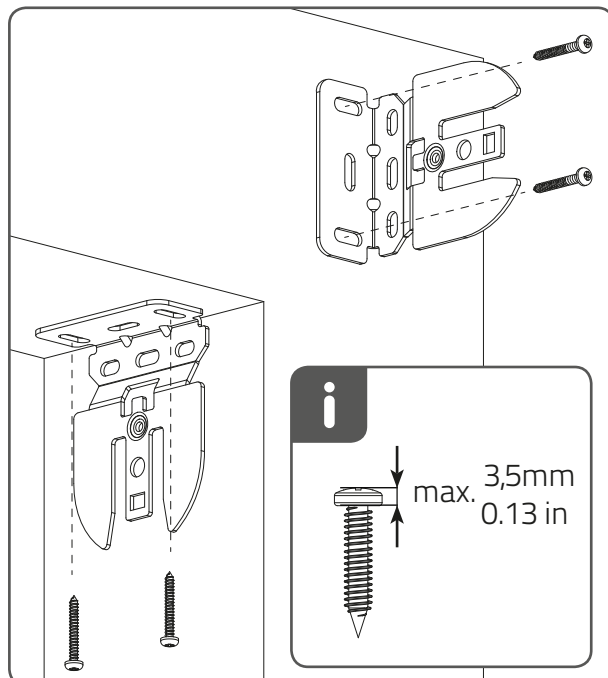
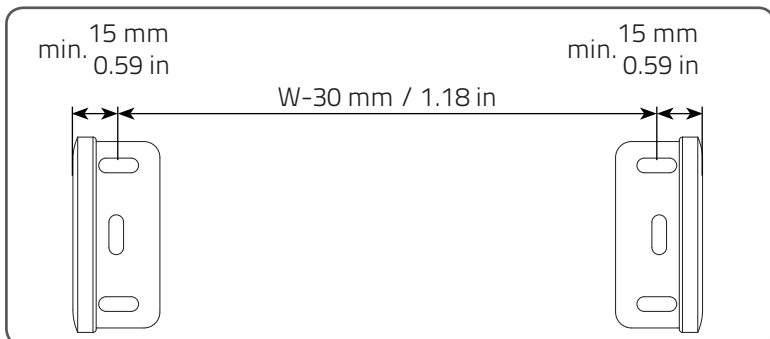
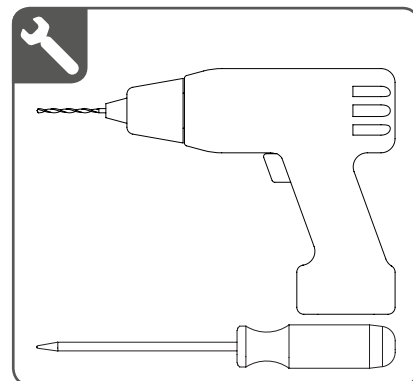
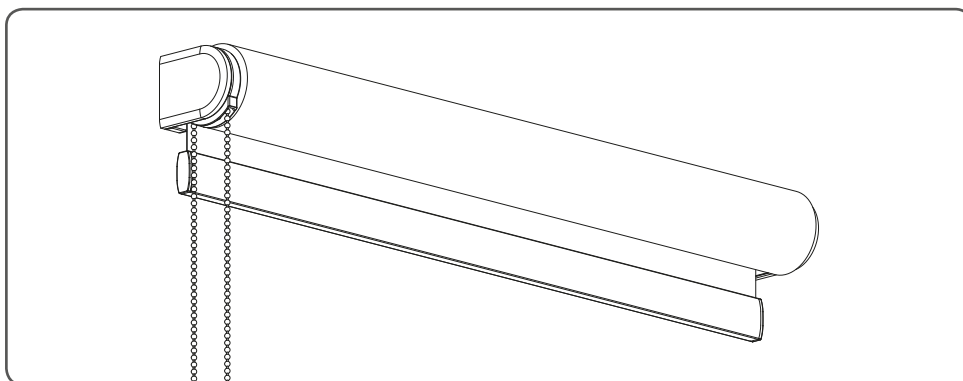
- Young children can strangle in the loop of pull cords, chains and tapes, and cords that operate window coverings.
 - To avoid strangulation and entanglement, keep cords out of the reach of young children. Cords may become wrapped around a child's neck
 - Move beds, cots and furniture away from window covering cords.
 - Do not tie cords together.
- Make sure cords do not twist together and form a loop.

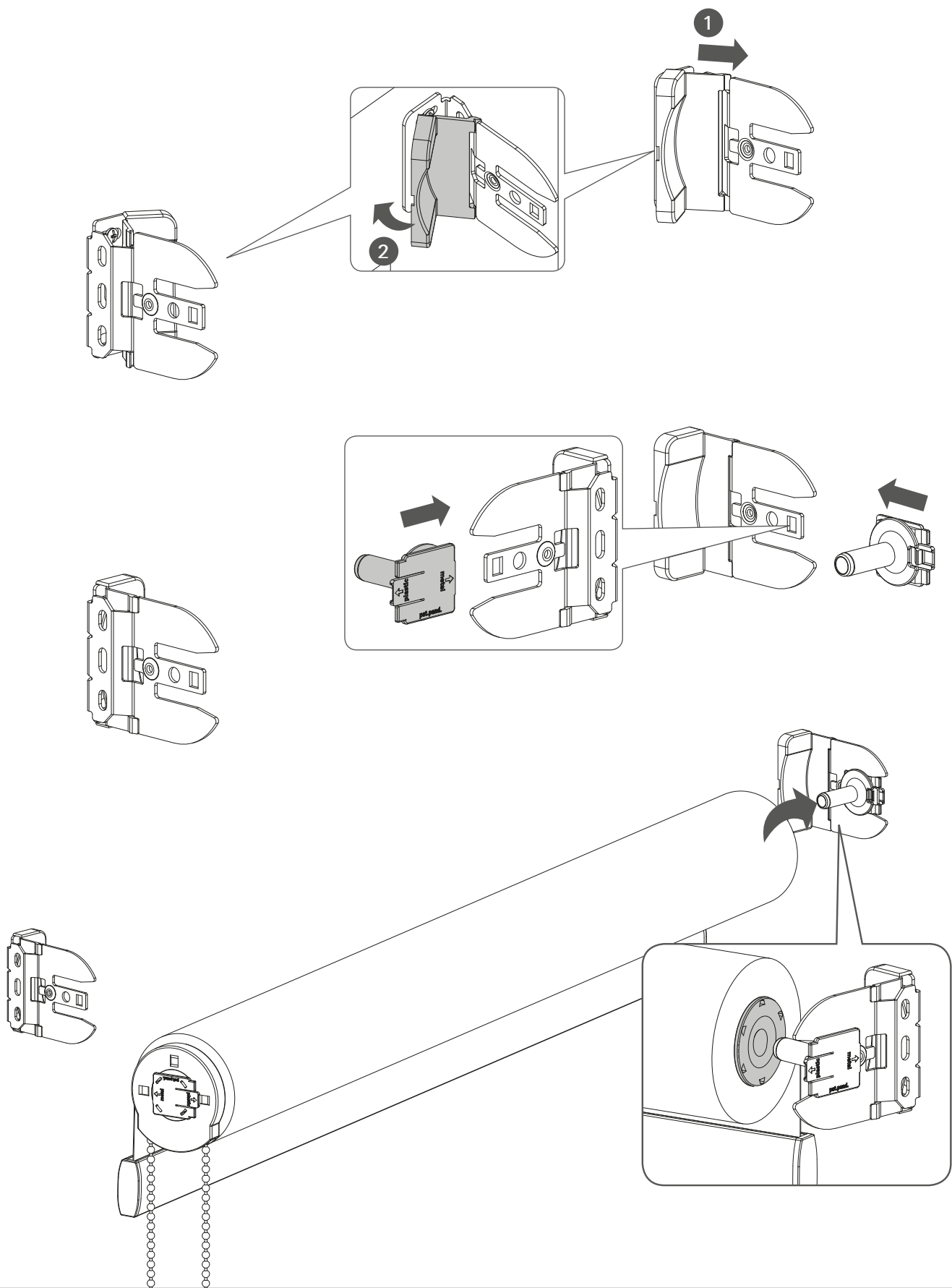


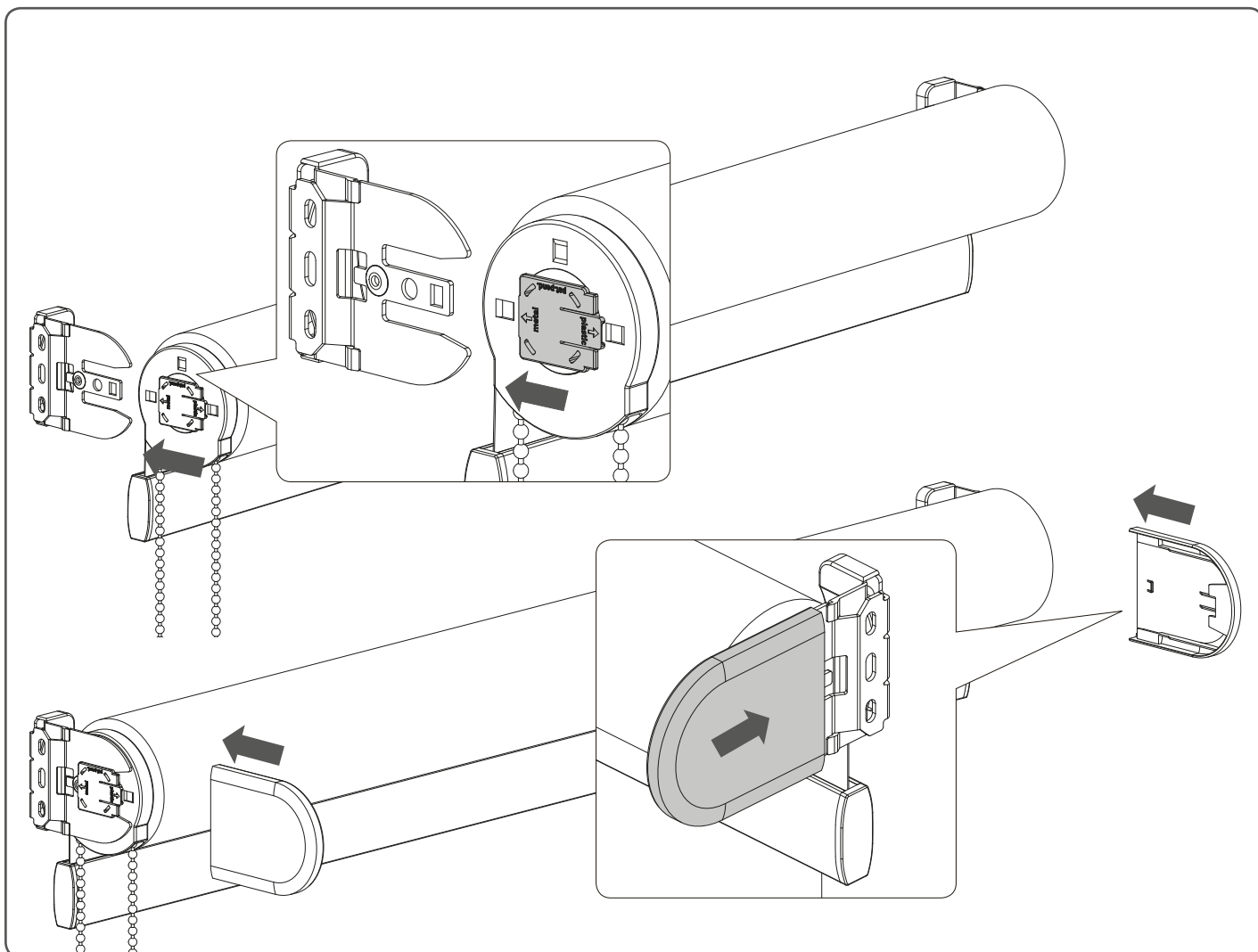
QR



rtube.nl/red233





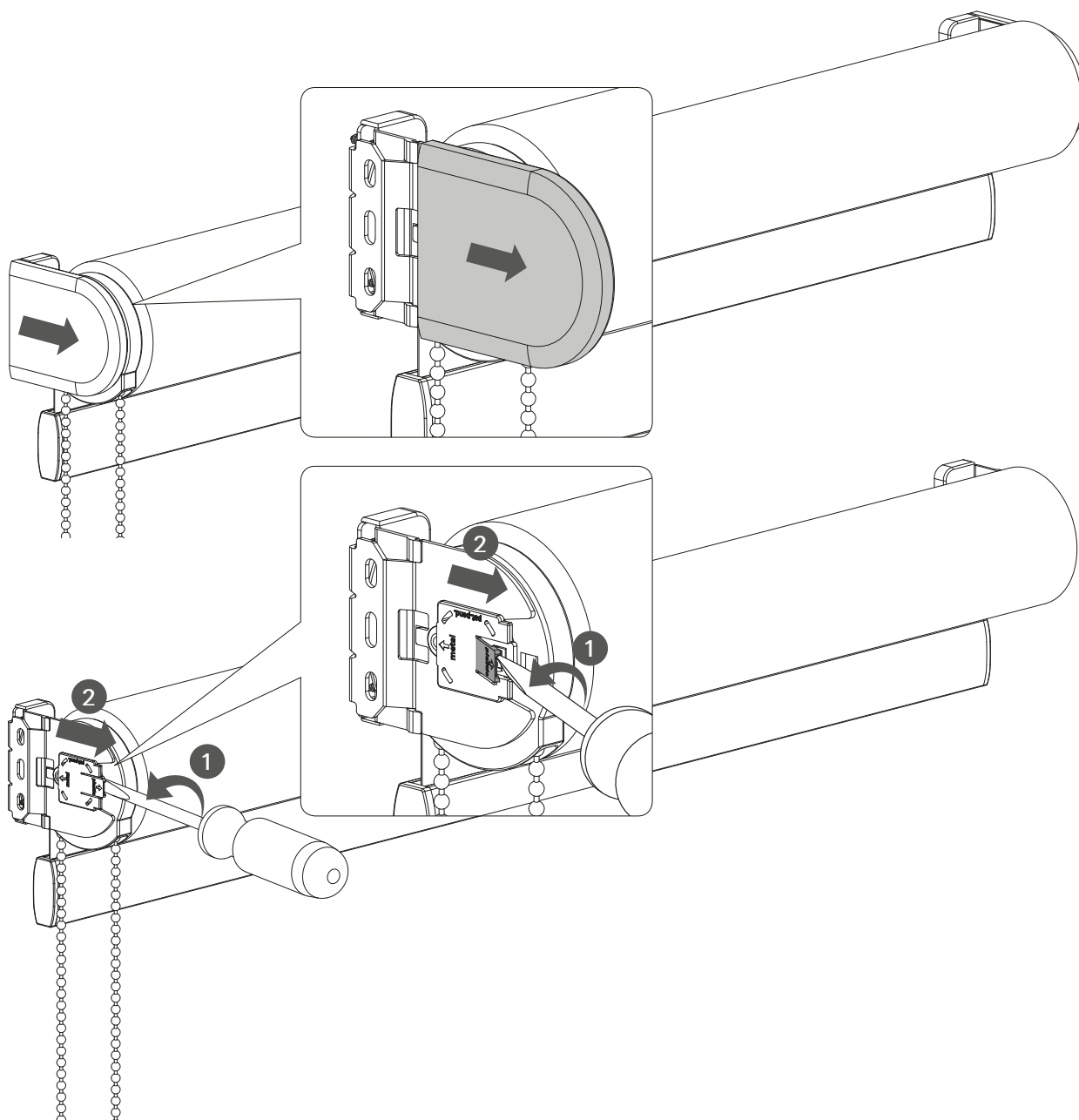


⚠ WARNING

Install the child safety device as specified in the childsafe manual.



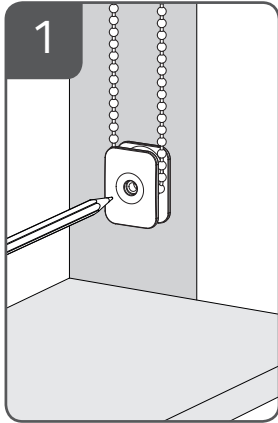
Removal



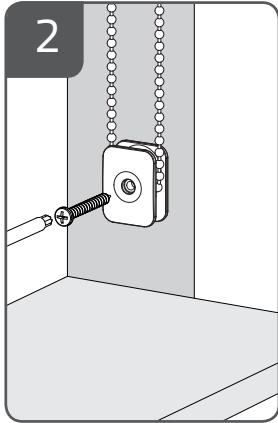
WARNING

The Safety Device is a fixed tension device for operating ball-chains that form a continuous loop. This device must be applied in chain loops that do not have a breakaway design. The safety device prevents free-hanging loops in operating chains. Install the safety device at the maximum distance possible from the control mechanism to prevent slack in the loop. Upon delivery to the end user, the device must be attached to the chain. The tensioning device is provided with fasteners for installation to wooden wall substrates. Please read the following information when installing the tensioning device. For other wall types please use appropriate screws that are suitable for your wall.

A: Inside Mount: Fully recessed shade and safety device

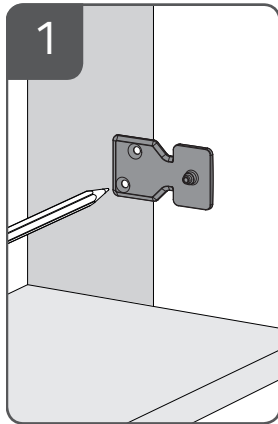


Position so there is no slack within the loop.

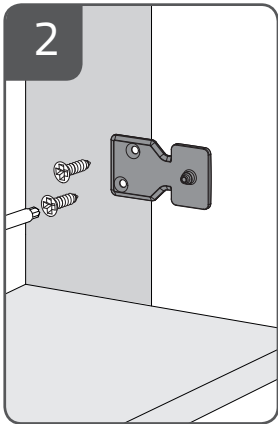


Mount the safety device.

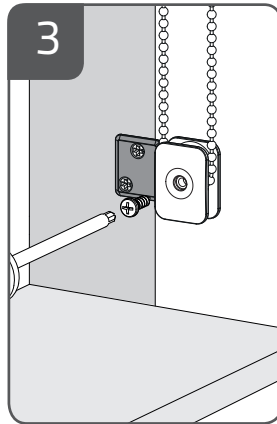
B: Inside Mount: Partially recessed shade and safety device



Position so there is no slack within the loop.

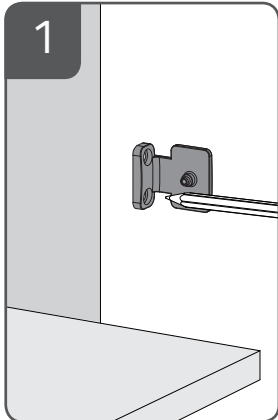


Secure mounting bracket.

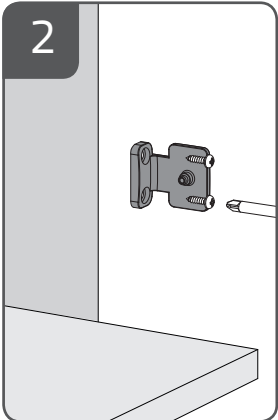


Mount safety device to the mounting bracket.

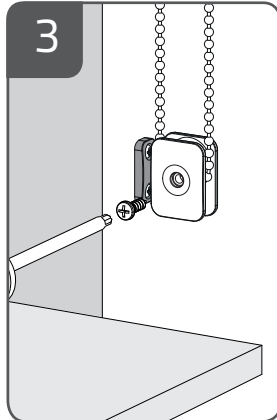
C: Outside Mount: Shade and safety device outside window



Position so there is no slack within the loop.

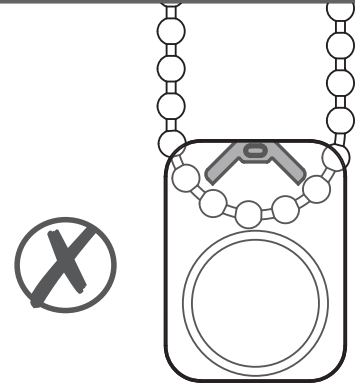


Secure mounting bracket.

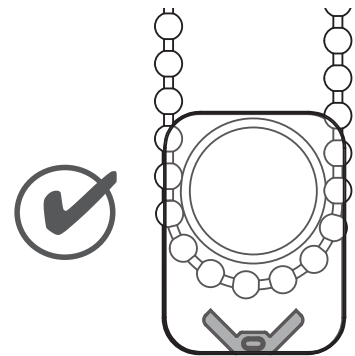


Mount safety device to the mounting bracket.

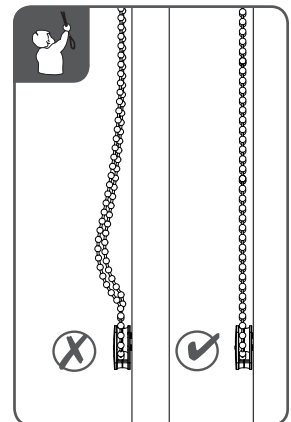
INSTALLATION TIPS



Shade will not operate if safety device is upside down.



Position the chain around the circular side of the safety device before installing.



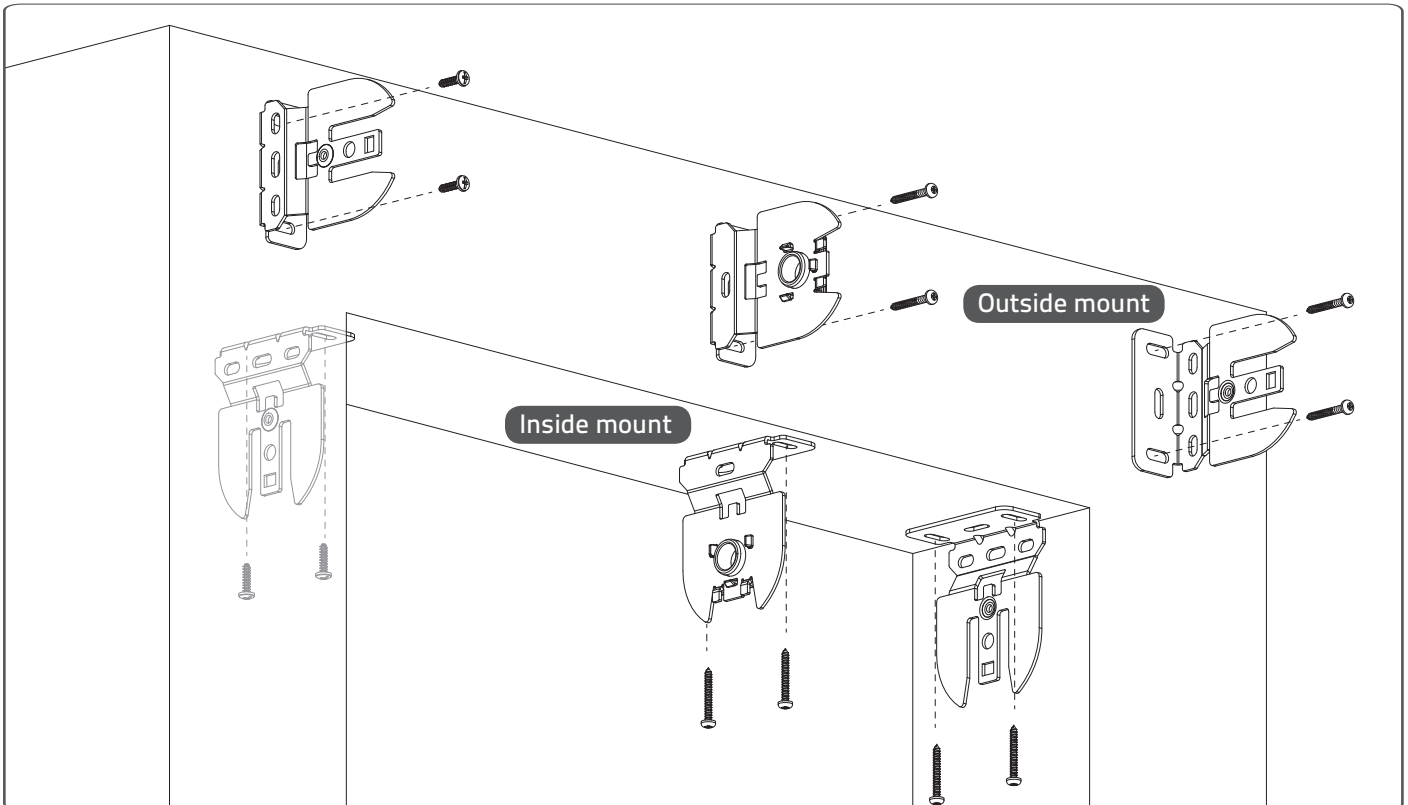
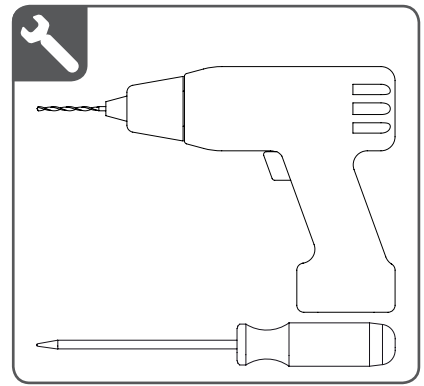
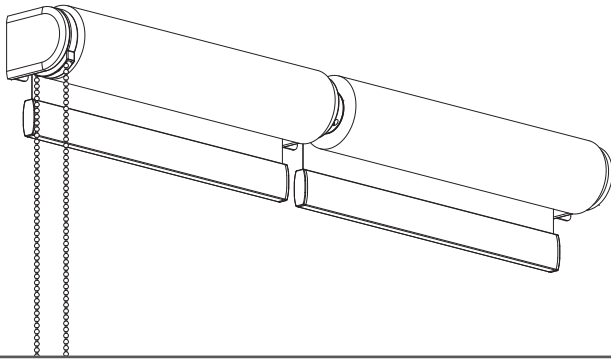
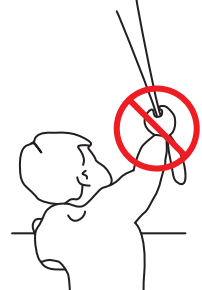
Install the safety device so there is no slack in the chain loop.

Installation - 2-on-1 Open Roll with a single control

Read the instructions carefully before assembling and using the product.
Assembling process can be completed by non-professionals. For indoor use only.

WARNING

- Young children can strangle in the loop of pull cords, chains and tapes, and cords that operate window coverings.
- To avoid strangulation and entanglement, keep cords out of the reach of young children. Cords may become wrapped around a child's neck
- Move beds, cots and furniture away from window covering cords.
- Do not tie cords together. Make sure cords do not twist together and form a loop.

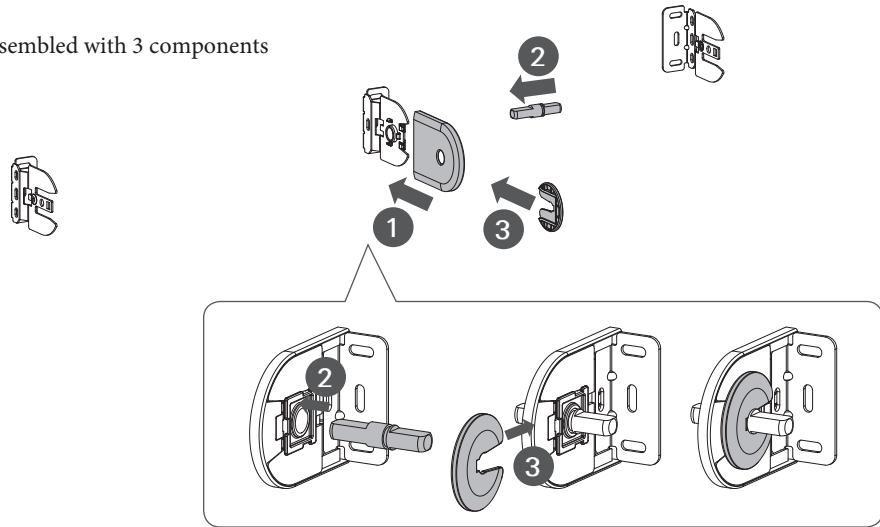


Step One:

- Use the brackets to help mark the screw locations
- On outside mount, make your marks so the distance from the outside edge of the left bracket to the outside edge of the right bracket equals your ordered width and the intermediate bracket is exactly in the middle of those brackets
- **Brackets must be installed level to each other for the shade to operate properly (for both inside mount and outside mount)**

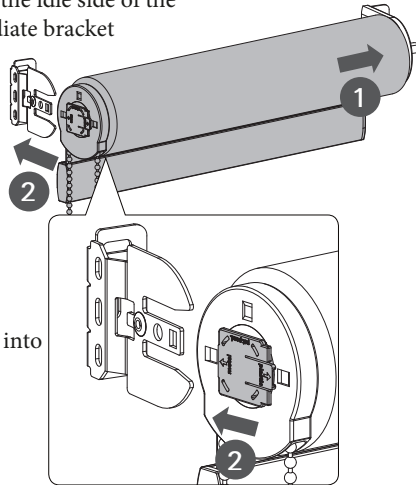
Step Two:

- Intermediate bracket will come assembled with 3 components



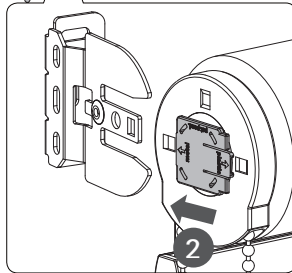
Step Three:

- Start with the left shade by sliding the idle side of the shade onto the pin of the intermediate bracket



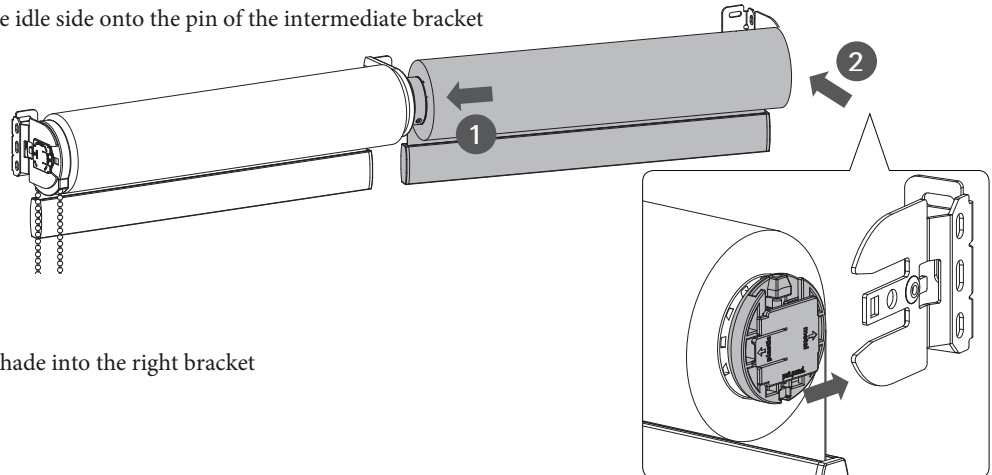
Step Four:

- Click the control side of the shade into the left bracket



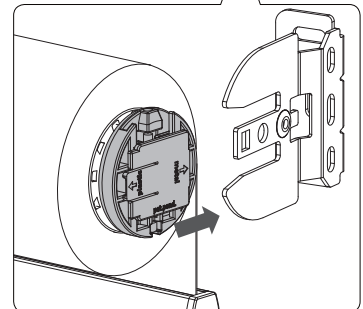
Step Five:

- With the right shade, slide the idle side onto the pin of the intermediate bracket



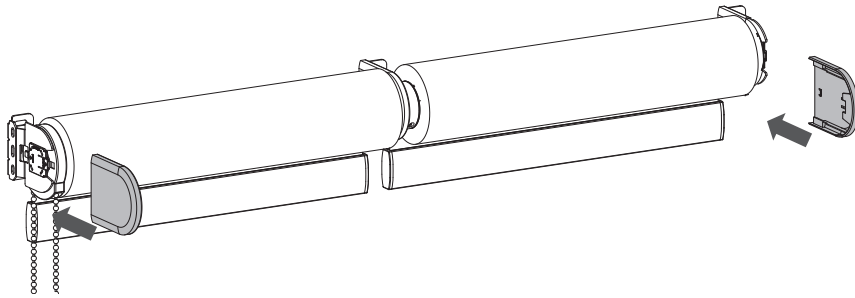
Step Six:

- Click the control side of the shade into the right bracket



Step Seven:

- Slide the bracket cover on the left and right bracket



Final Step:

- Install the child safety device

WARNING

Install the child safety device as specified in the childsafe manual.

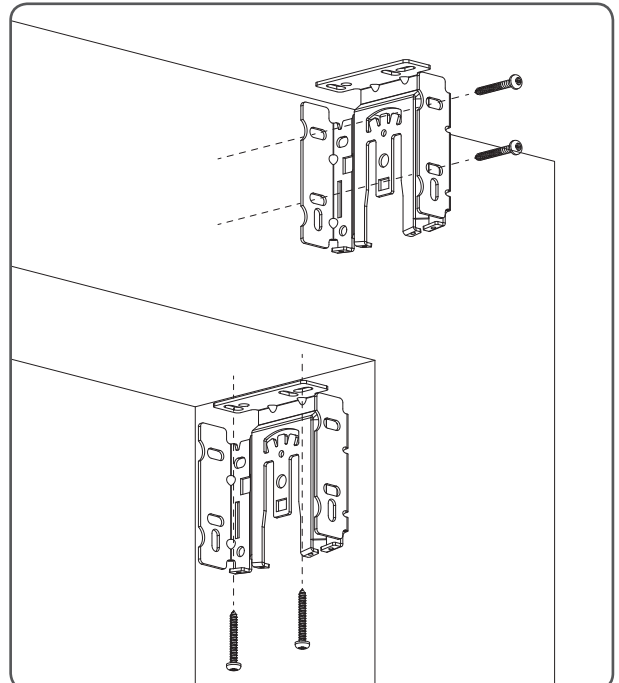
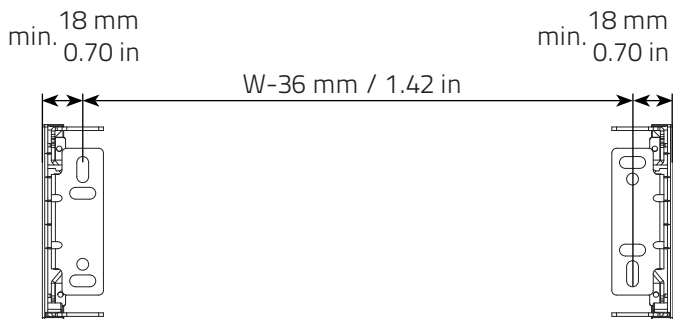
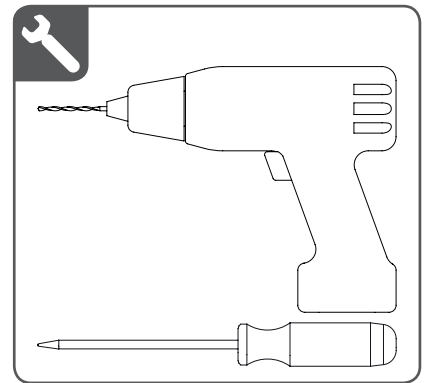
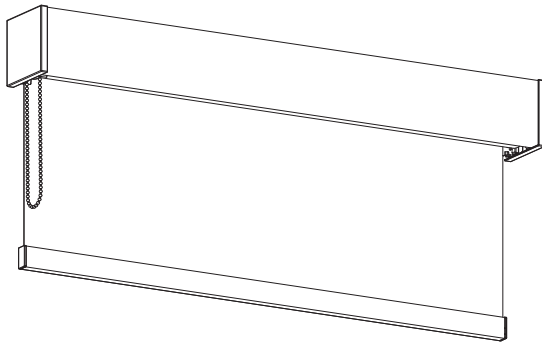
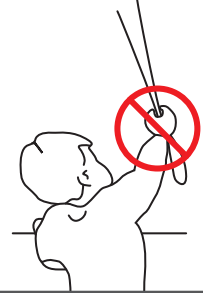


Installation - Fascia: 2-on-1 with Continuous Chain

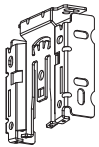
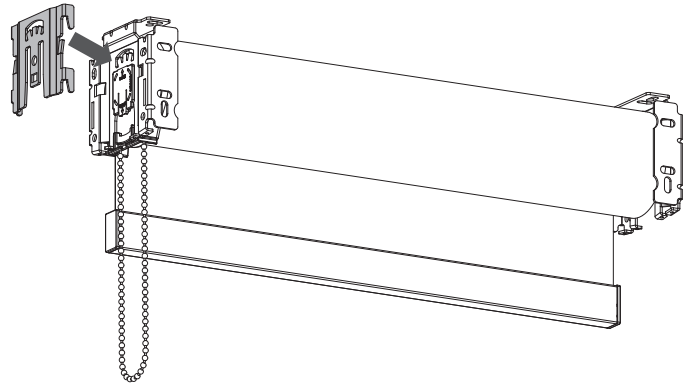
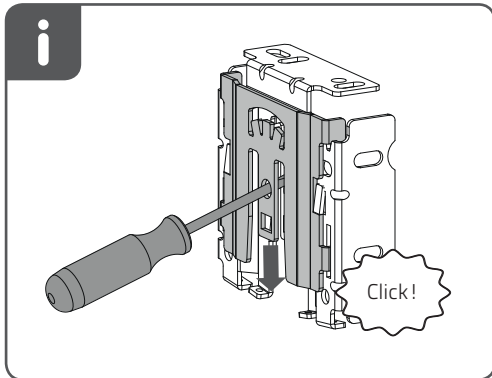
Read the instructions carefully before assembling and using the product.
Assembling process can be completed by non-professionals. For indoor use only.

WARNING

- Young children can strangle in the loop of pull cords, chains and tapes, and cords that operate window coverings.
- To avoid strangulation and entanglement, keep cords out of the reach of young children. Cords may become wrapped around a child's neck
- Move beds, cots and furniture away from window covering cords.
- Do not tie cords together.
Make sure cords do not twist together and form a loop.



Fascia 2-on-1 (Intermediate) Installation



i Mechanism can be placed at both sides.

