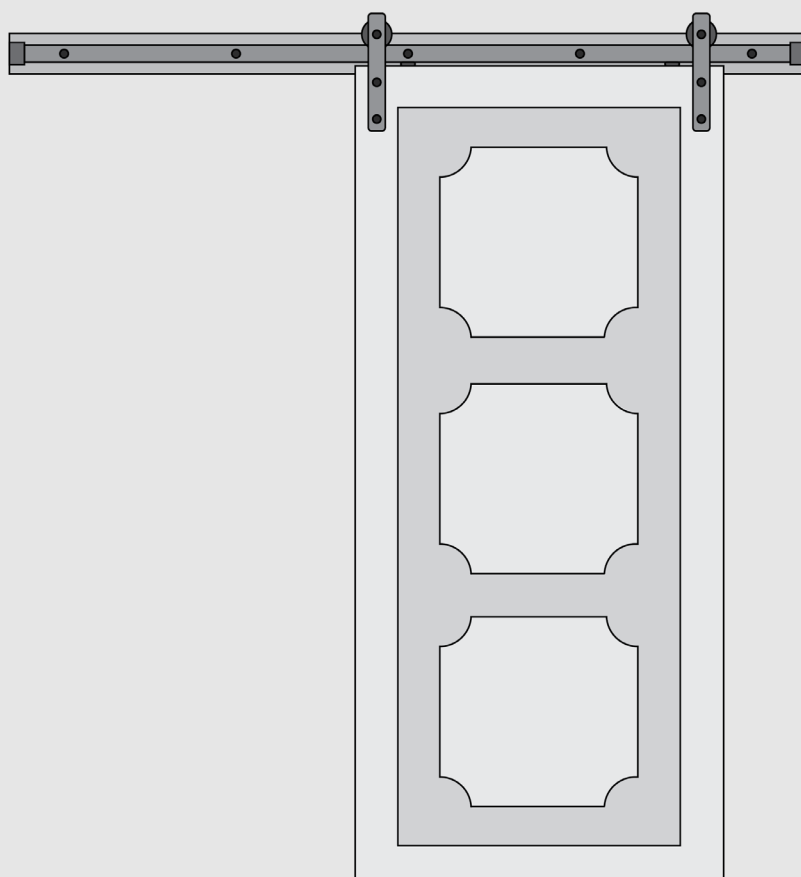




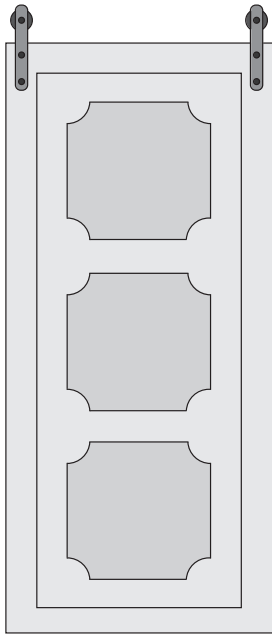
BARN DOOR INSTALLATION GUIDE



Complete instructions for
installing custom barn doors.

BARN DOOR INSTALLATION GUIDE

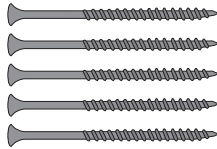
WHAT'S INCLUDED?



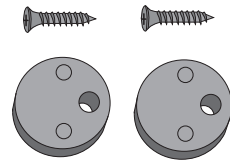
1x Barn door



1x Header board w/ Rail attached



5x 3" Wood screws



2x Safety stops and screws

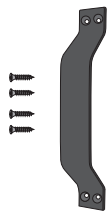


5x Screw head covers



1x Hex key

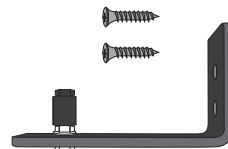
OPTIONAL BONUS PARTS



1x Handle
4x Screws



1x Handle install guide



1x Floor guide
2x Screws

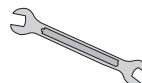
TOOLS NEEDED



Pencil



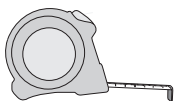
Power drill



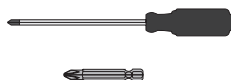
Wrench



Stud finder



Tape measure



Phillips screwdriver or drill bit

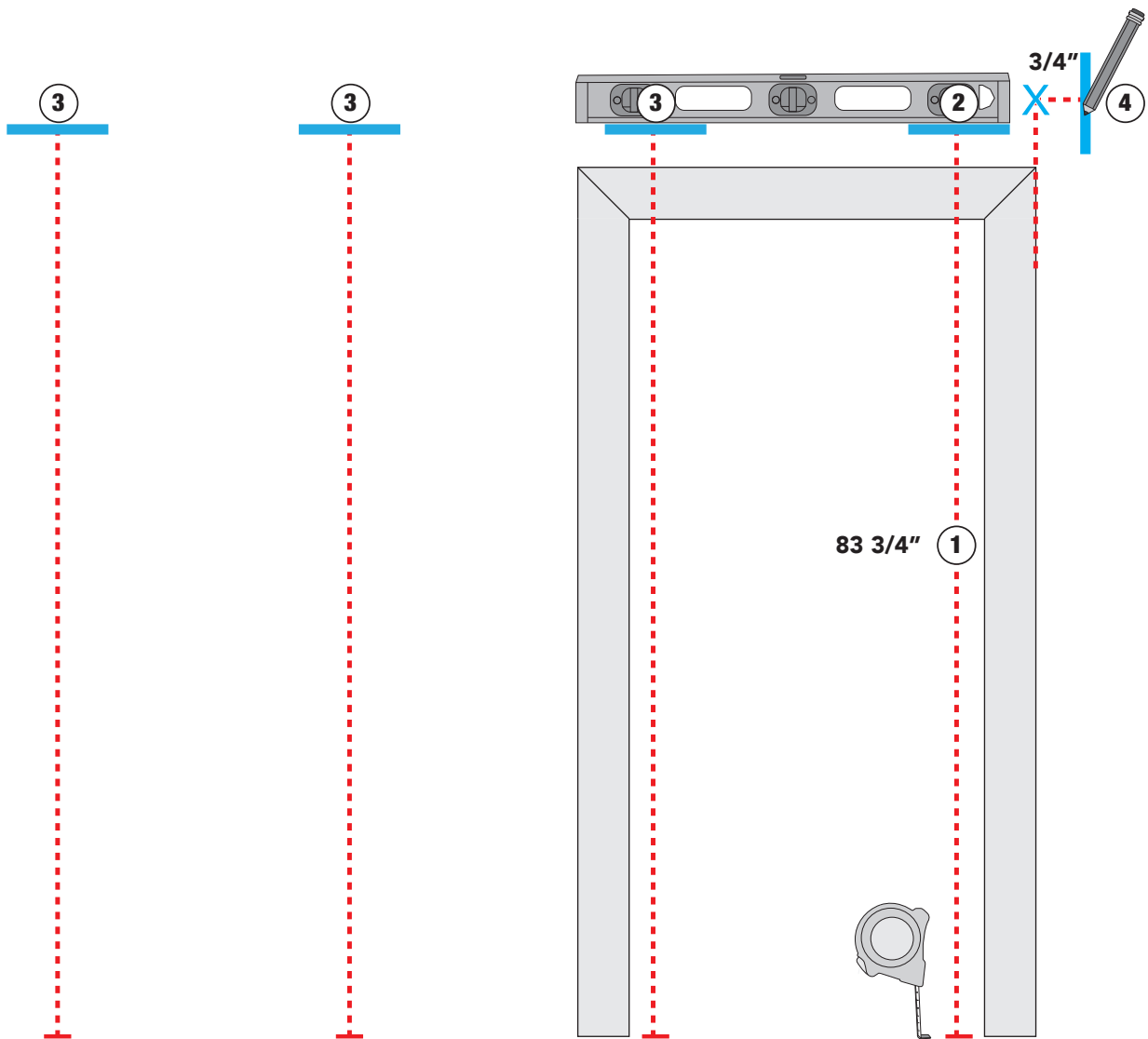


36" to 48" Level



Step ladder

MEASURE & MARK



1. Using a measuring tape, measure up 83 3/4 inches from the floor.



2. Mark this spot with a pencil.

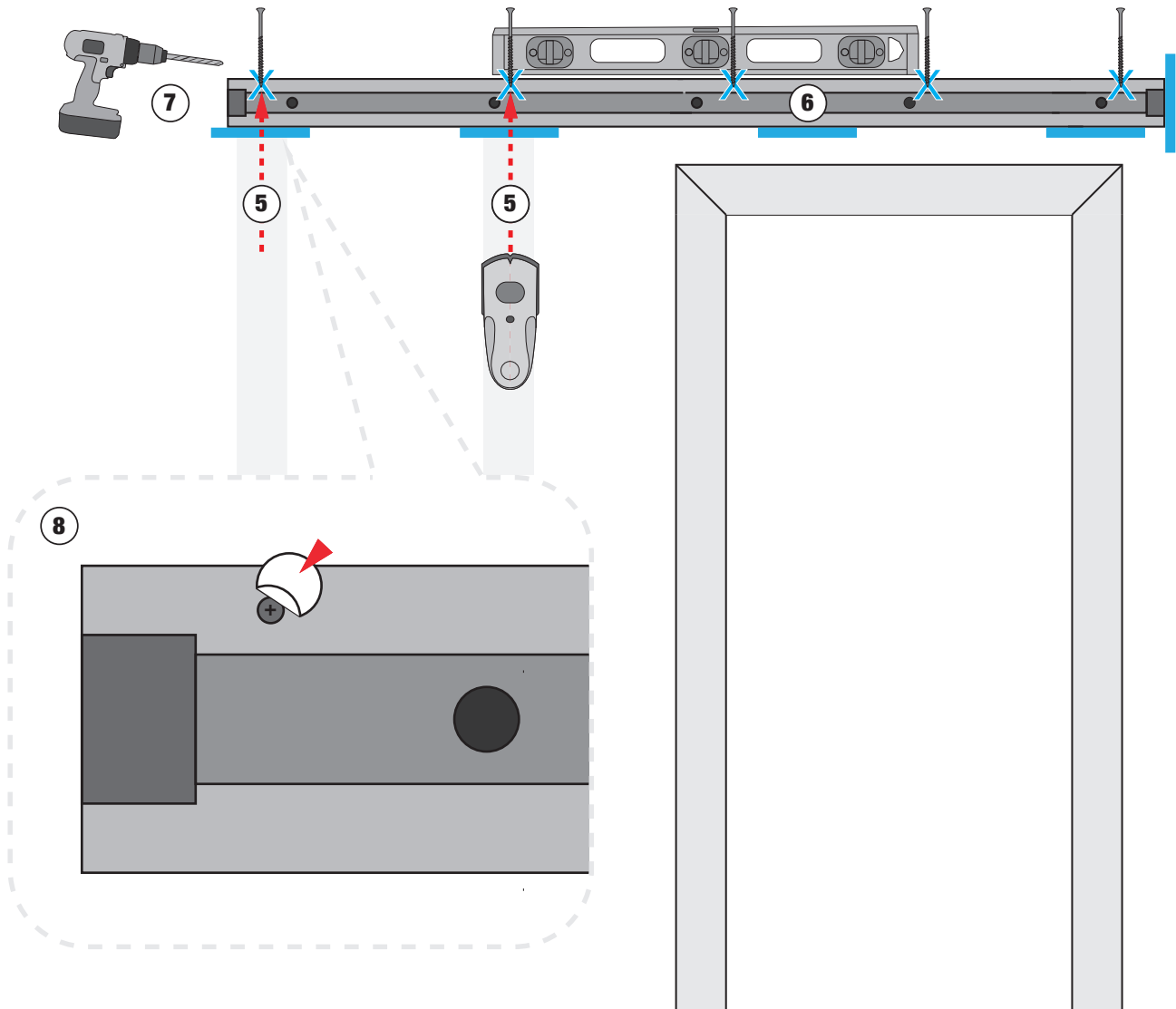


3. Place level on the marked spot, and draw a line over the doorway opening and extending to the side the door will slide.



4. Mark the edge of the doorway with an X, then measure out 3/4 inch from the edge of the doorway, and draw a vertical line to help align the header board.

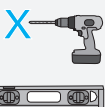
MOUNT THE HEADER BOARD



5. Locate the studs along the marked line. **X** marks the spot! The other 3 wood screws will be used above the opening where you will be drilling into solid wood.



6. A helper may be needed for the next part. Lift the header board, and line up the bottom of the board with your horizontal marked line.



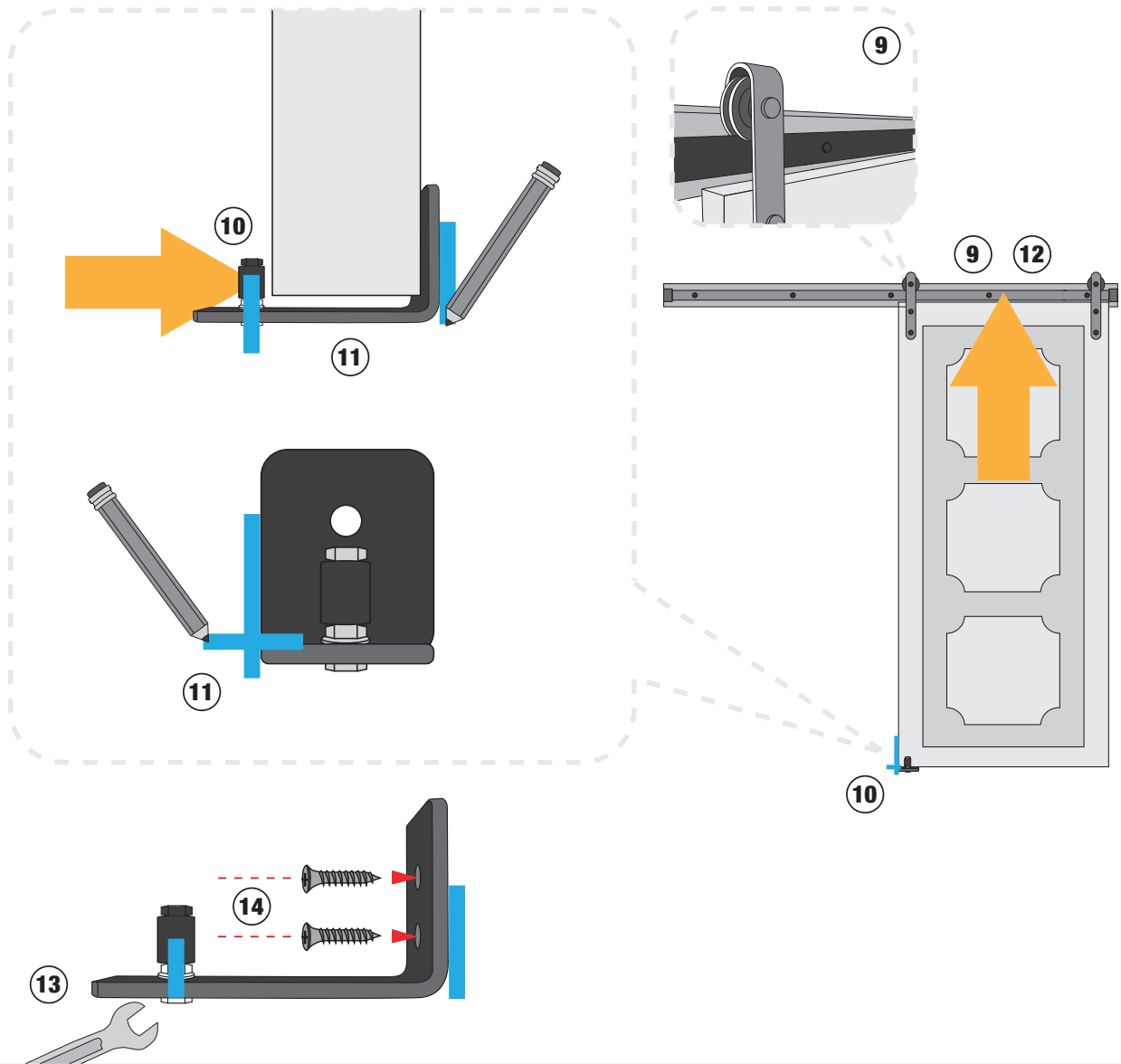
7. Drill a wood screw through the header board above the track into the two marked stud locations. Use the level to ensure the header board doesn't slip off level.



8. Apply screw head covers to cover the screw holes on the header board.

FLOOR GUIDE

BONUS PART



9. Lift the barn door up, and align the grooves in the wheels with the track, then slide the barn door into the closed position.



10. Align the floor guide with the bottom corner of the barn door on the side in which the door slides, then slide the floor guide's bolt towards the door leaving a little breathing room.



11. Now that the floor guide is aligned, mark the bolt position so you know where to tighten, and mark the position of the floor guide on the wall so you know exactly where to mount it.



12. Lift the door off the track and place to the side.

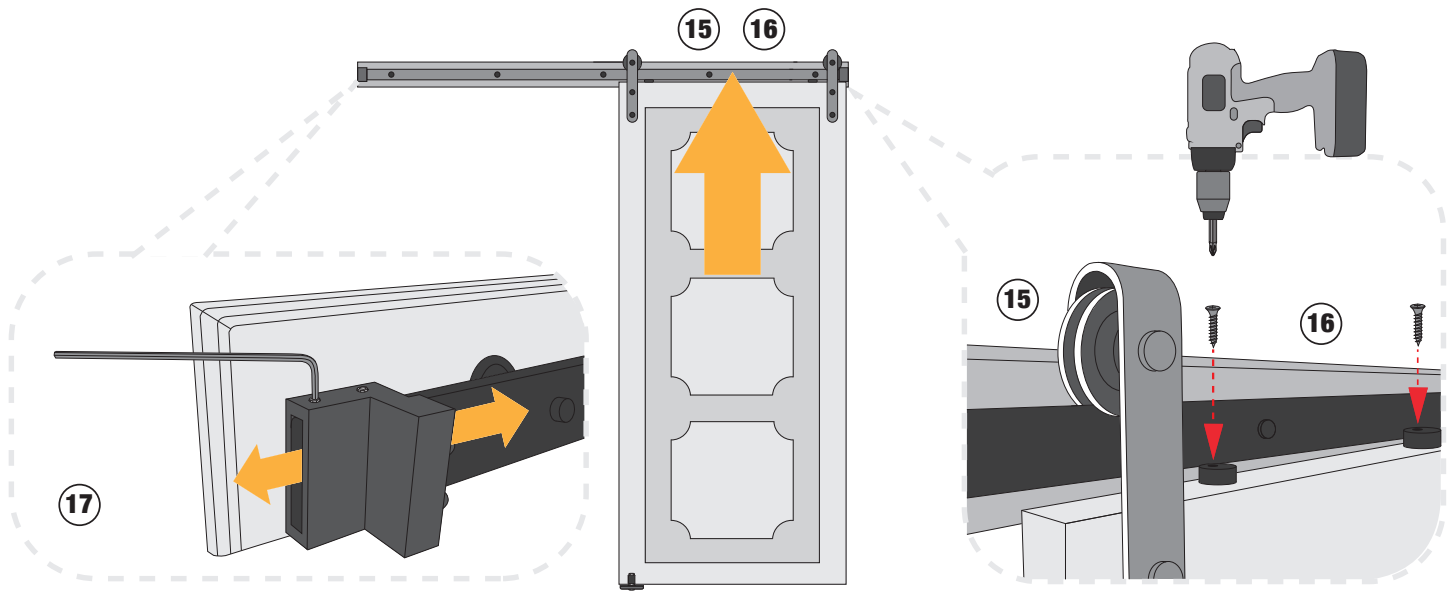


13. Tighten the bolt on the Floor Guide at the marked position.

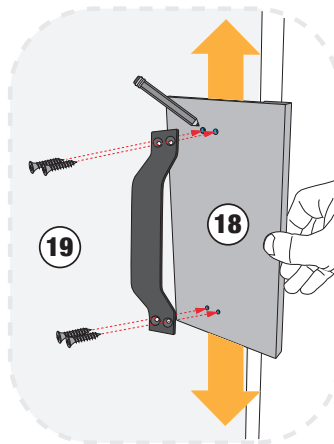


14. Align the Floor Guide with the marks on the wall, and screw the floor guide into the wall (or floor board) using the 2 wood screws provided with the Floor Guide.

HANG THE DOOR



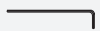
BONUS PART



15. Lift the barn door up, and align the grooves in the wheels with the track.



16. Important! Install the 2 safety stops to prohibit the door from lifting off the track. Position each safety stop on top of the barn door near each wheel strap.



17. Note: If necessary, adjust the placement of the barn door on the track over the opening. On each end of the track are track stops which may be adjusted if necessary using the hex key.



18. Handles are optional. If you want to add the handle to the door, line the handle placement guide up to the edge of your door. Lift, or lower to the desired height using the holes in the placement guide to mark where the screws will be placed.



19. Remove the placement guide, and use the power drill to install the handle.

Questions or concerns about your new product should be addressed with the retailer where the purchase was initiated.