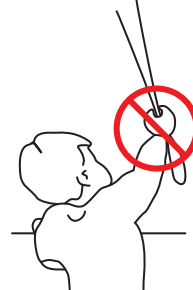


Installation Panel Blind free hanging

Read the instructions carefully before assembling and using the product.
Assembling process can be completed by non-professionals. For indoor use only.

⚠ WARNING

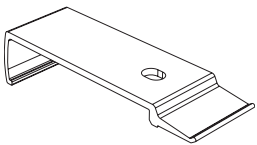
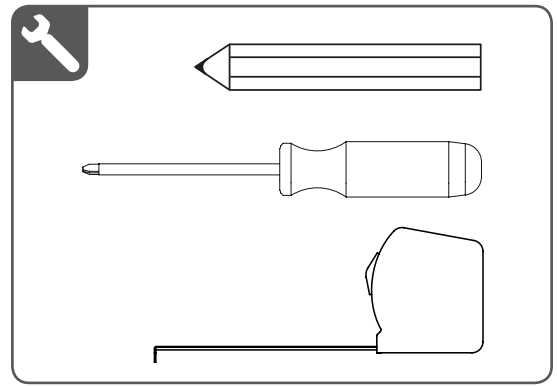
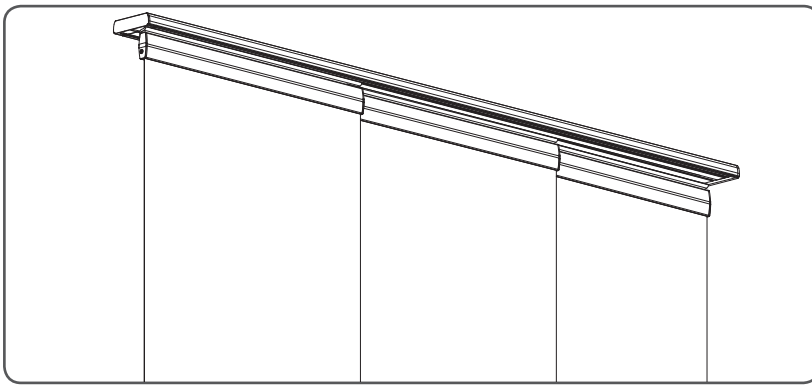
- Young children can strangle in the loop of pull cords, chains and tapes, and cords that operate window coverings.
 - To avoid strangulation and entanglement, keep cords out of the reach of young children. Cords may become wrapped around a child's neck
 - Move beds, cots and furniture away from window covering cords.
 - Do not tie cords together.
- Make sure cords do not twist together and form a loop.



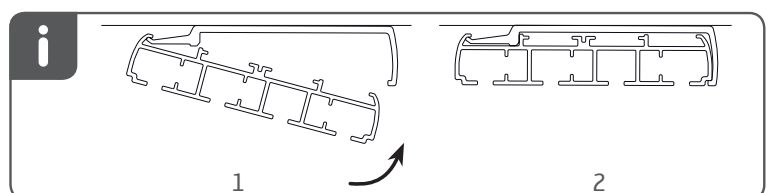
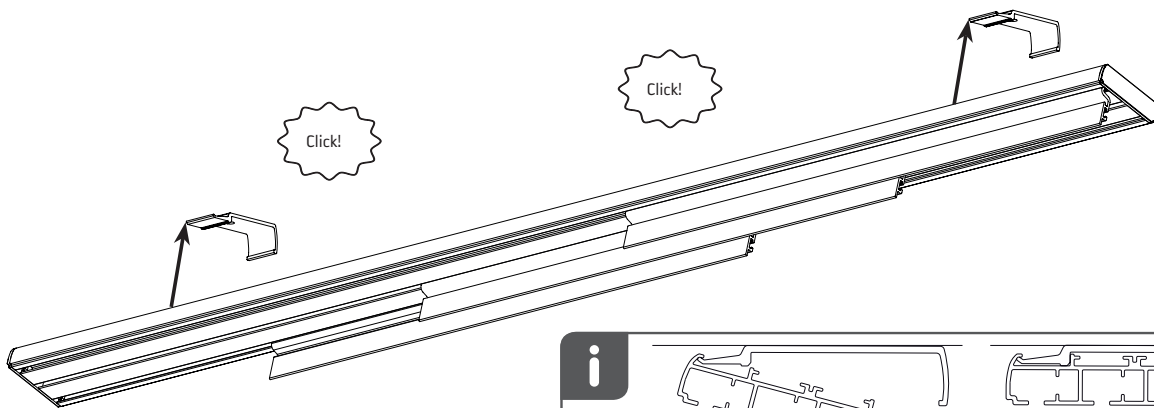
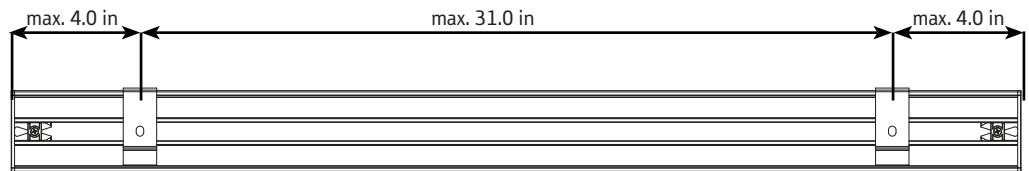
QR

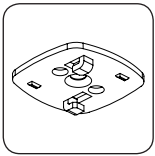


rtube.nl/red404

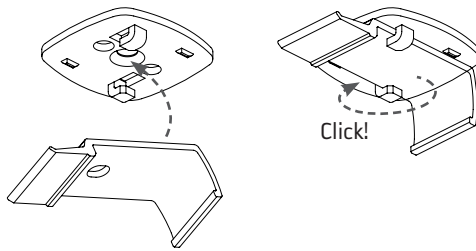


PTC17C2/PTC17C3/
PTC17C4/PTC17C5/
PTC17C6

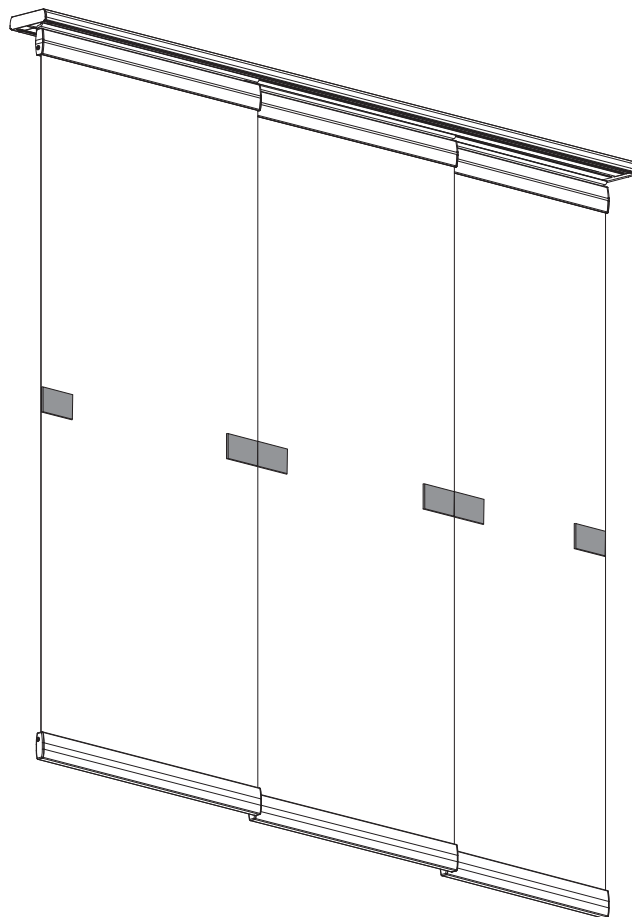
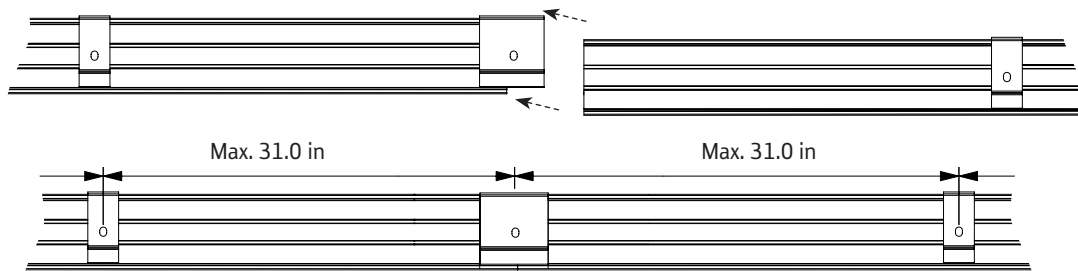




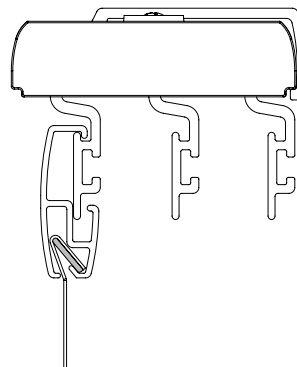
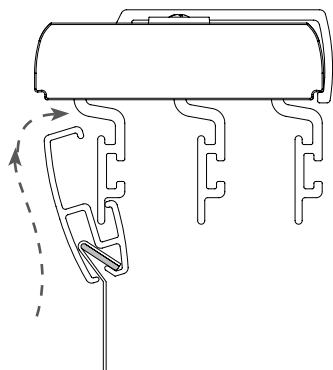
PTC35
for installation ceiling clip
on soft ceilings.



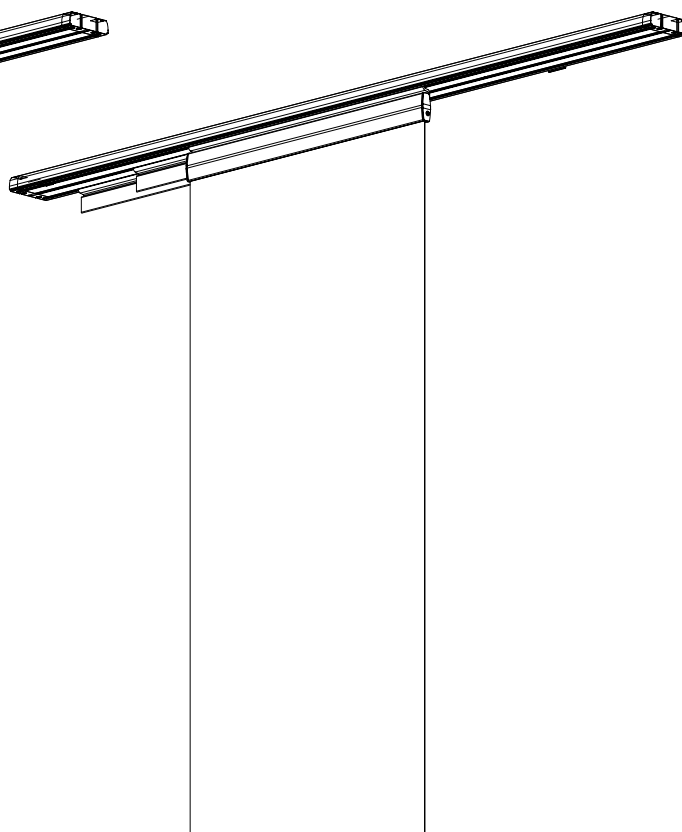
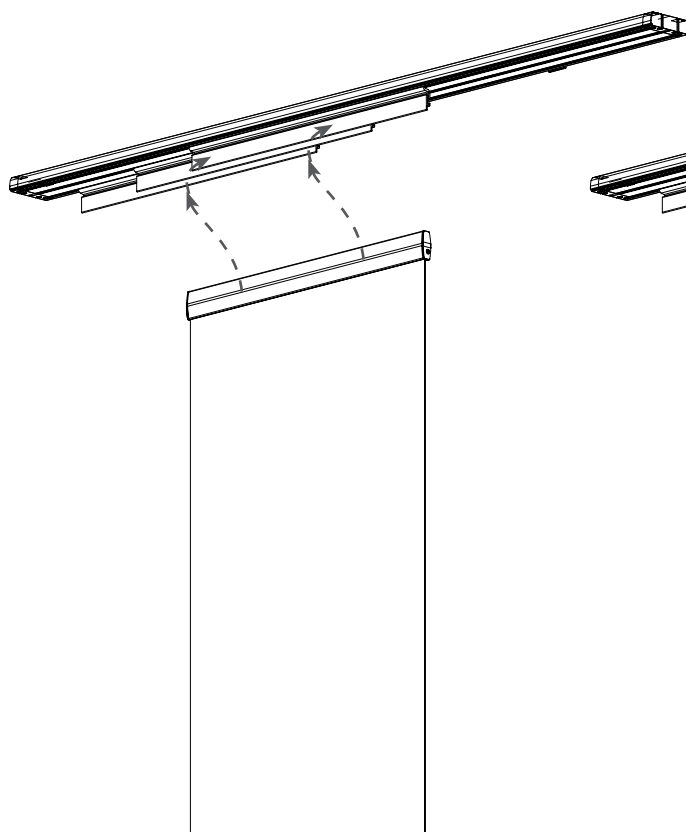
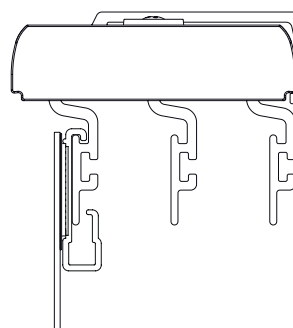
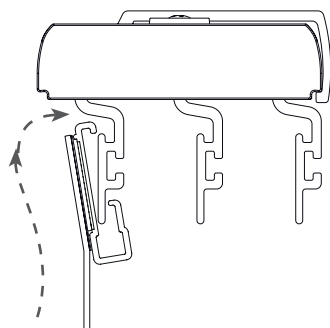
Connect headrails with connector clip PTC33C2, PTC33C3, PTC33C4, PTC33C5 or PTC33C6



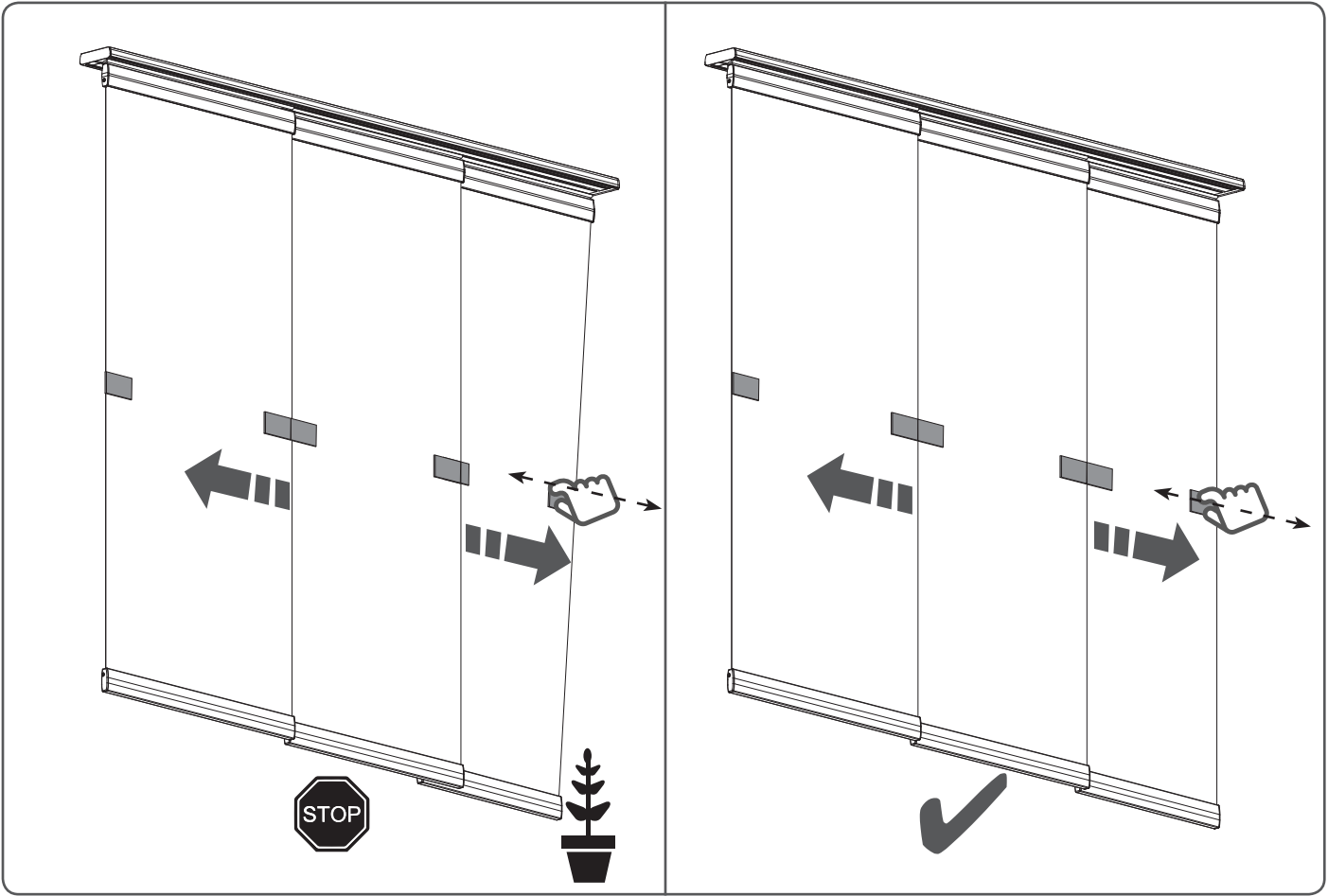
Hanging panel with holddownstrip



Hanging panel with velcro



Control



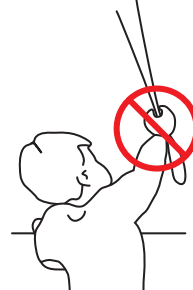
Your dealer:

Installation Panel Blind wandcontrol

Read the instructions carefully before assembling and using the product.
Assembling process can be completed by non-professionals. For indoor use only.

⚠ WARNING

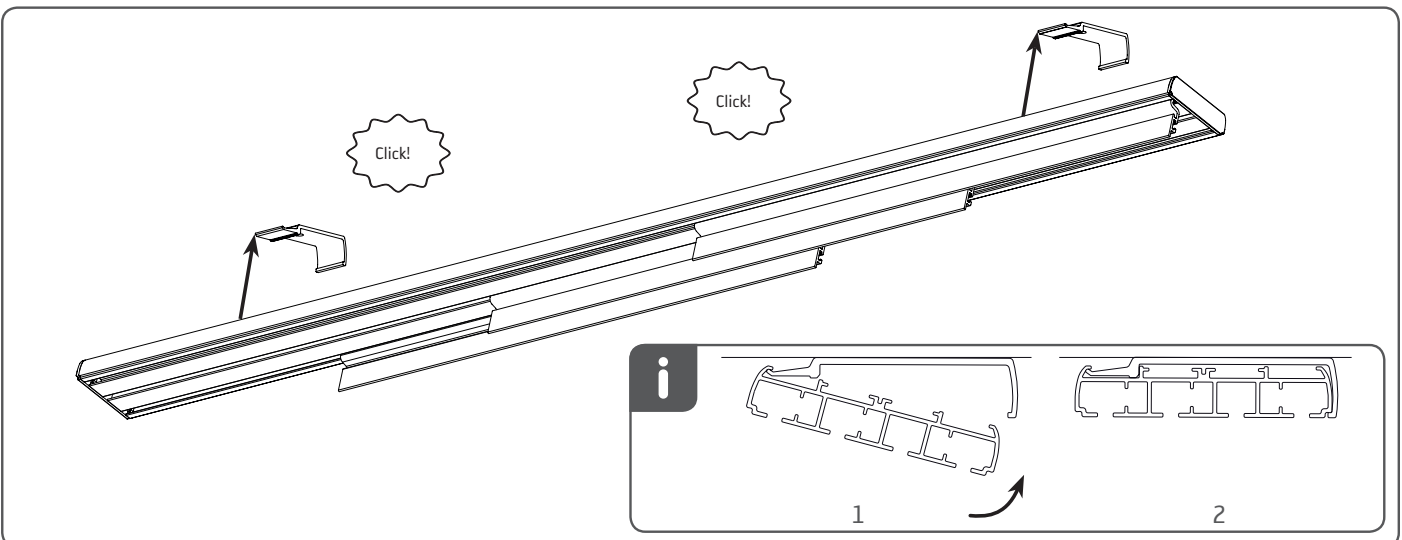
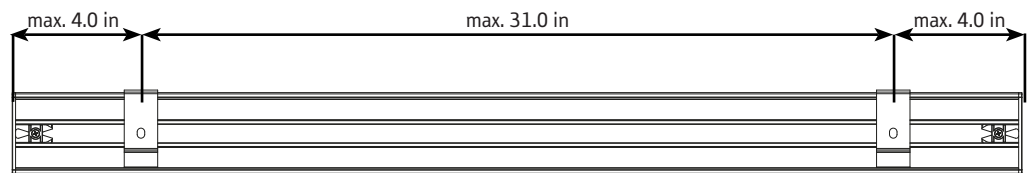
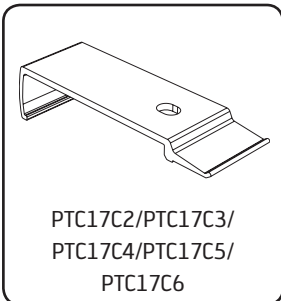
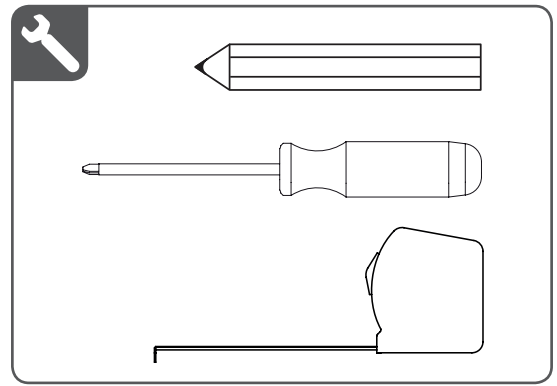
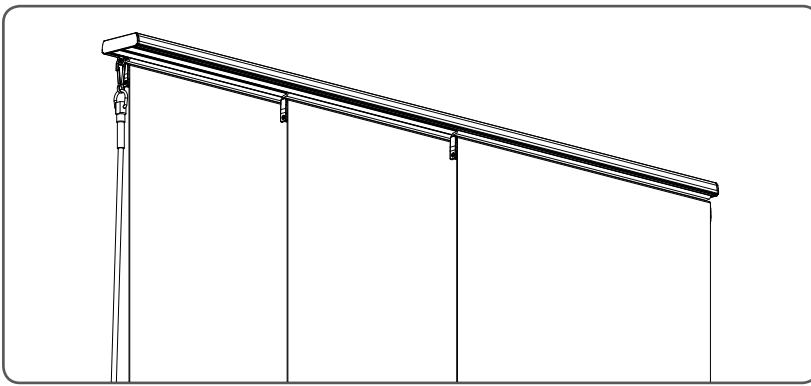
- Young children can strangle in the loop of pull cords, chains and tapes, and cords that operate window coverings.
 - To avoid strangulation and entanglement, keep cords out of the reach of young children. Cords may become wrapped around a child's neck
 - Move beds, cots and furniture away from window covering cords.
 - Do not tie cords together.
- Make sure cords do not twist together and form a loop.

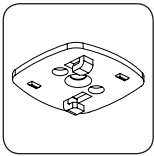


QR

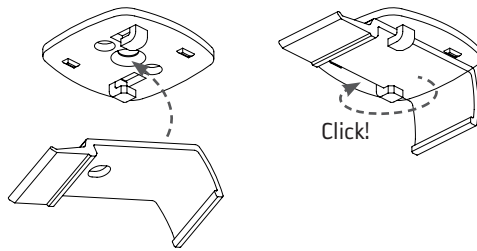


rtube.nl/red405

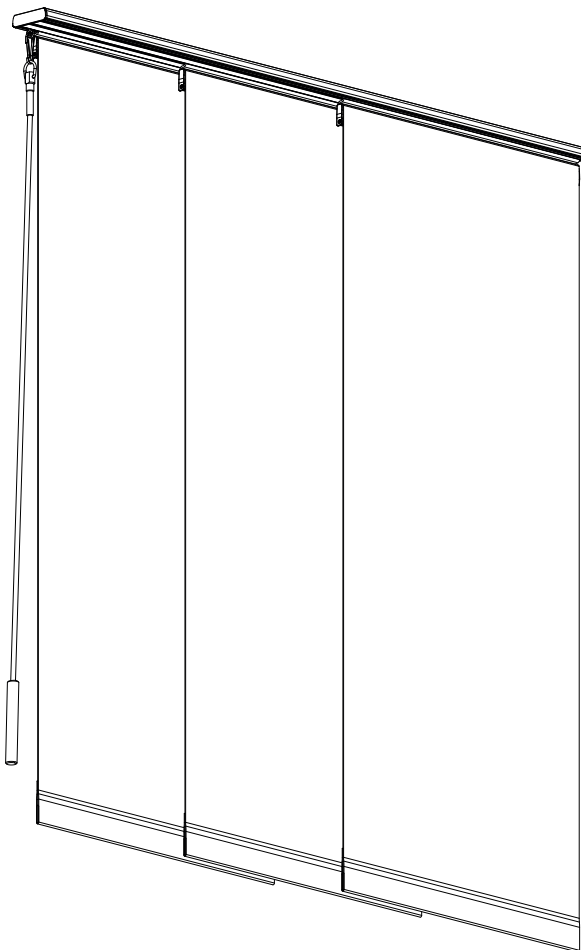
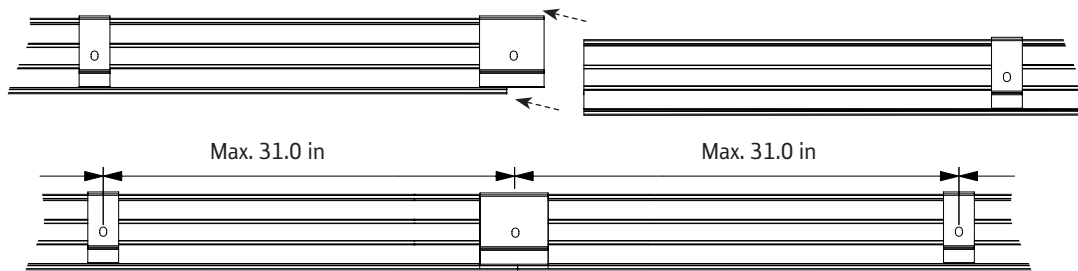




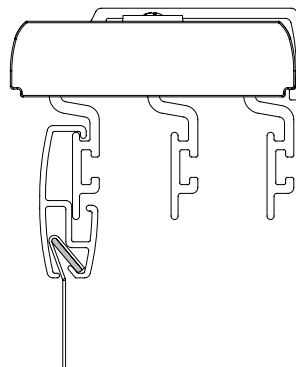
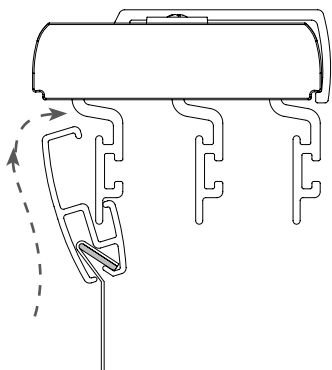
PTC35
for installation ceiling clip
on soft ceilings.



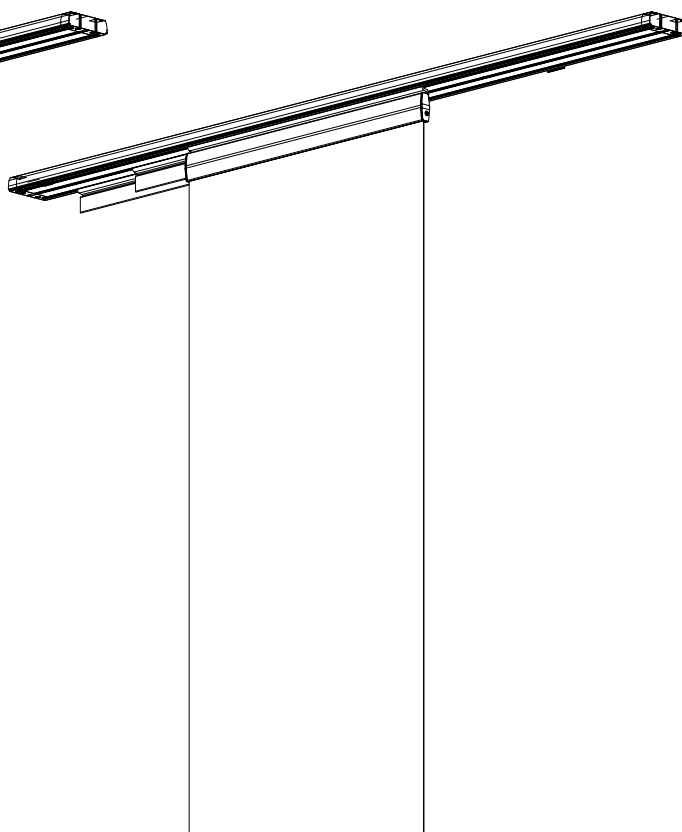
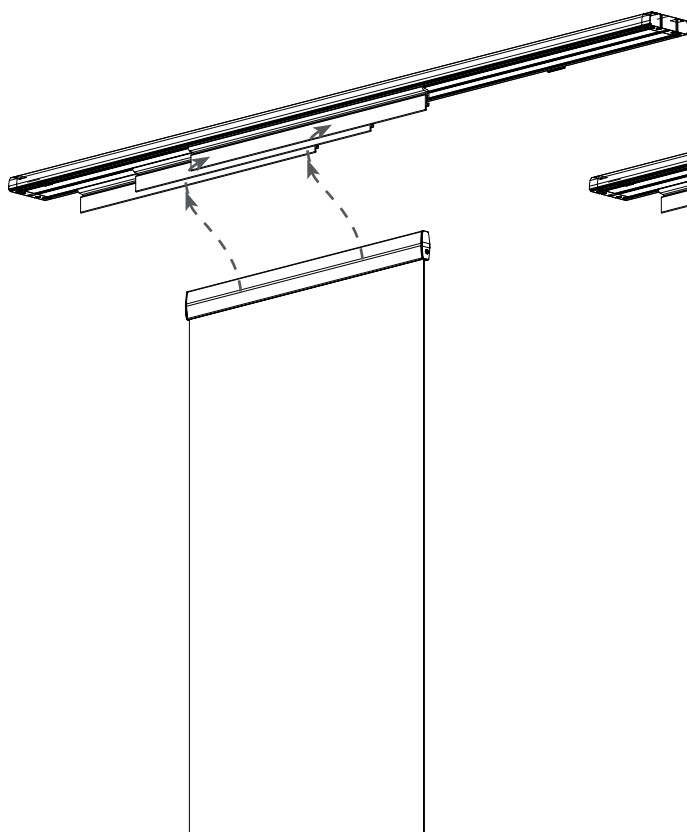
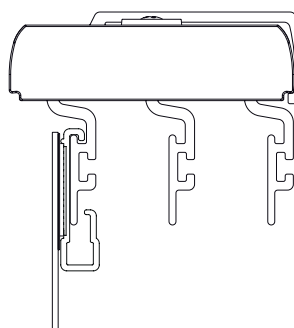
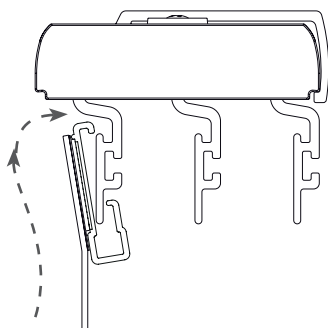
Connect headrails with connector clip PTC33C2, PTC33C3, PTC33C4, PTC33C5 or PTC33C6



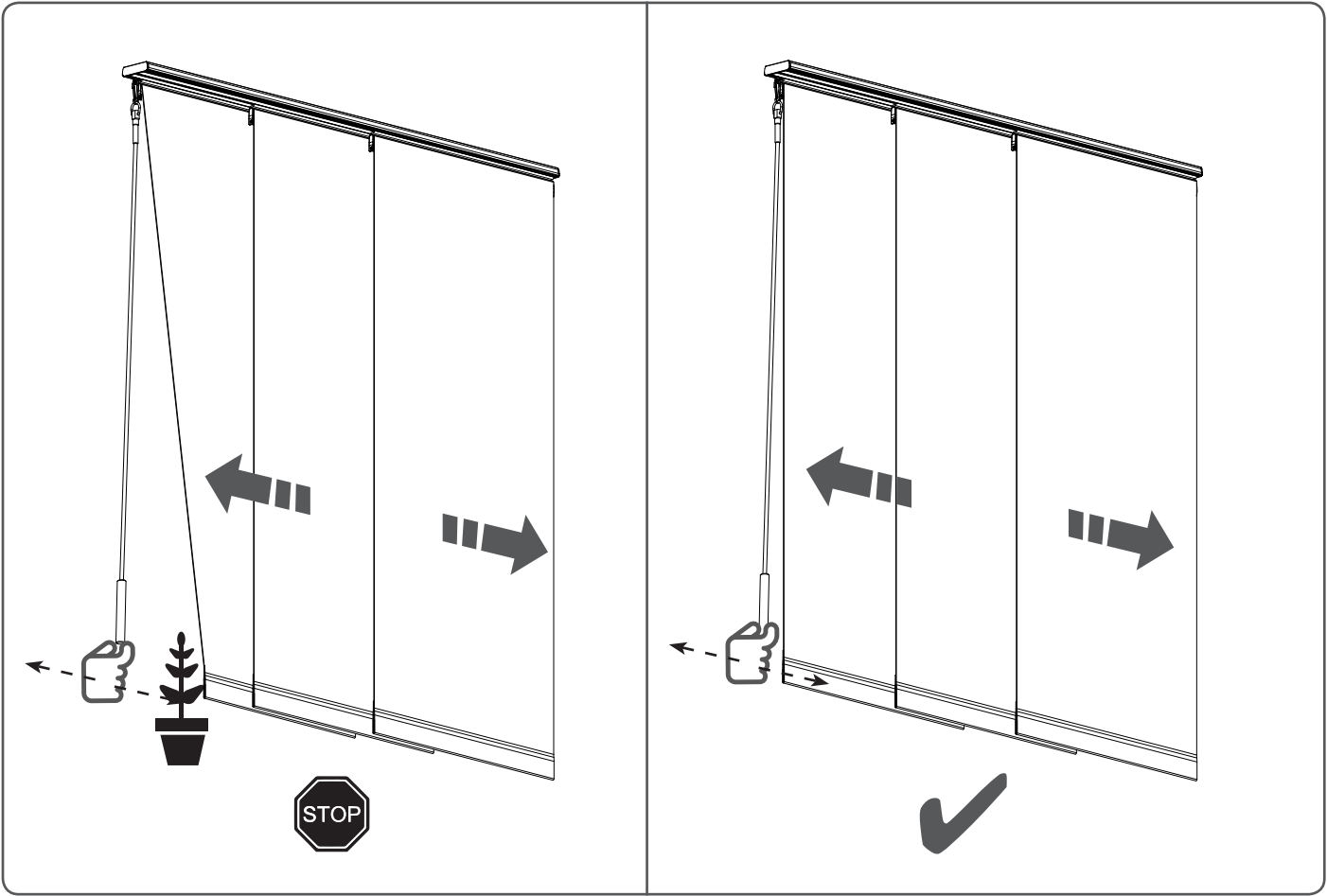
Hanging panel with holddownstrip



Hanging panel with velcro



Control



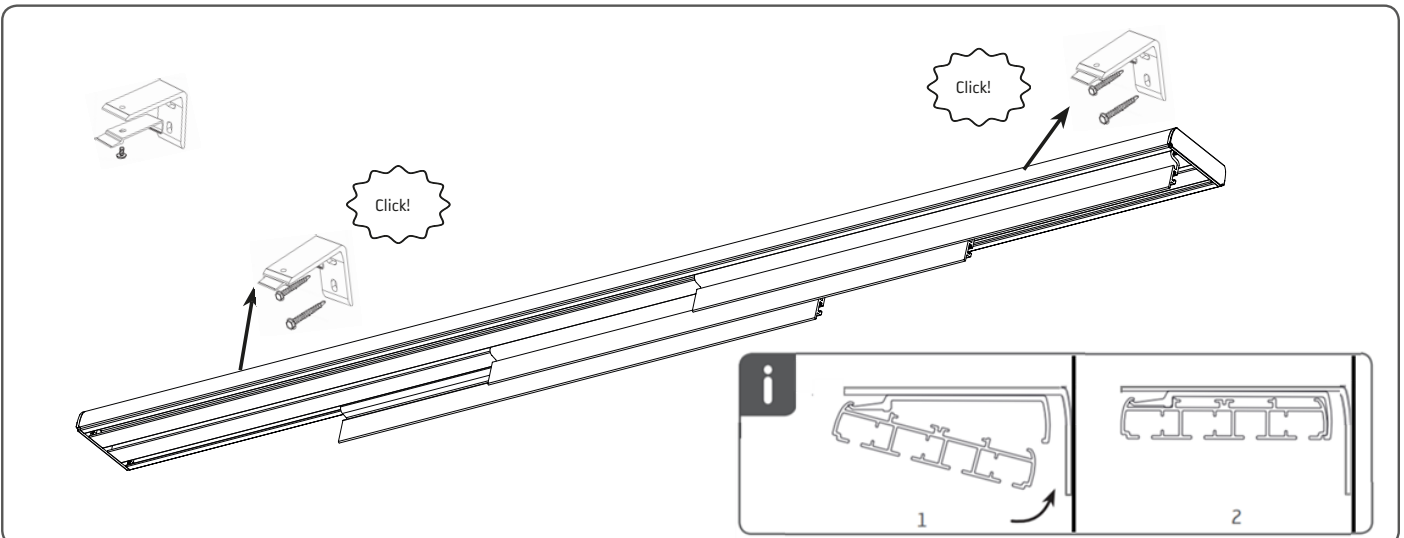
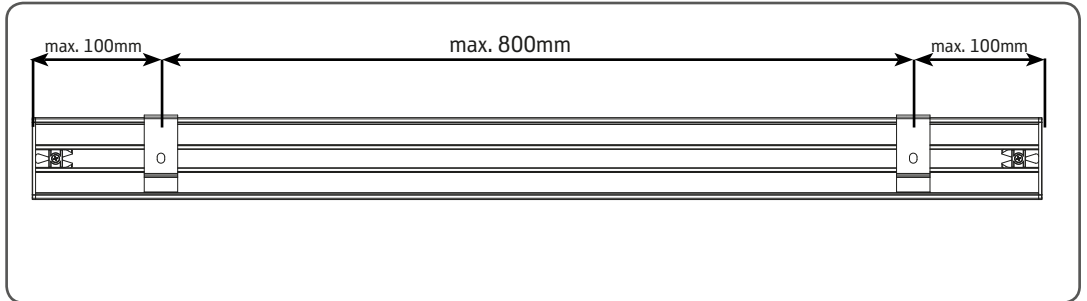
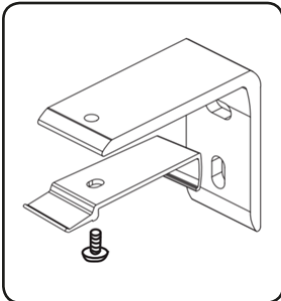
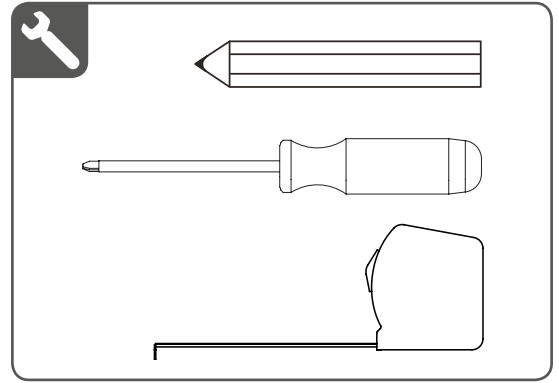
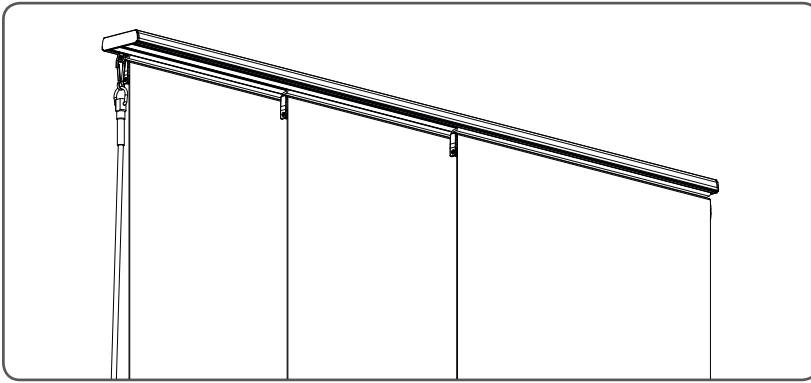
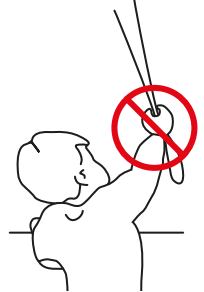
Your dealer:

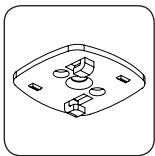
Installation Panel Blind: Outside Mount

Read the instructions carefully before assembling and using the product.
Assembling process can be completed by non-professionals. For indoor use only.

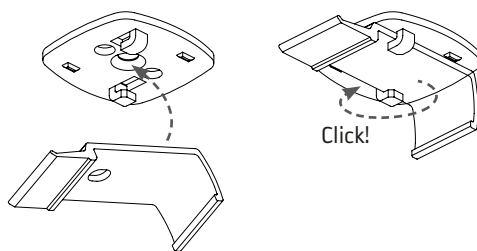
WARNING

- Young children can strangle in the loop of pull cords, chains and tapes, and cords that operate window coverings.
- To avoid strangulation and entanglement, keep cords out of the reach of young children.
Cords may become wrapped around a child's neck
- Move beds, cots and furniture away from window covering cords.
- Do not tie cords together.
Make sure cords do not twist together and form a loop.

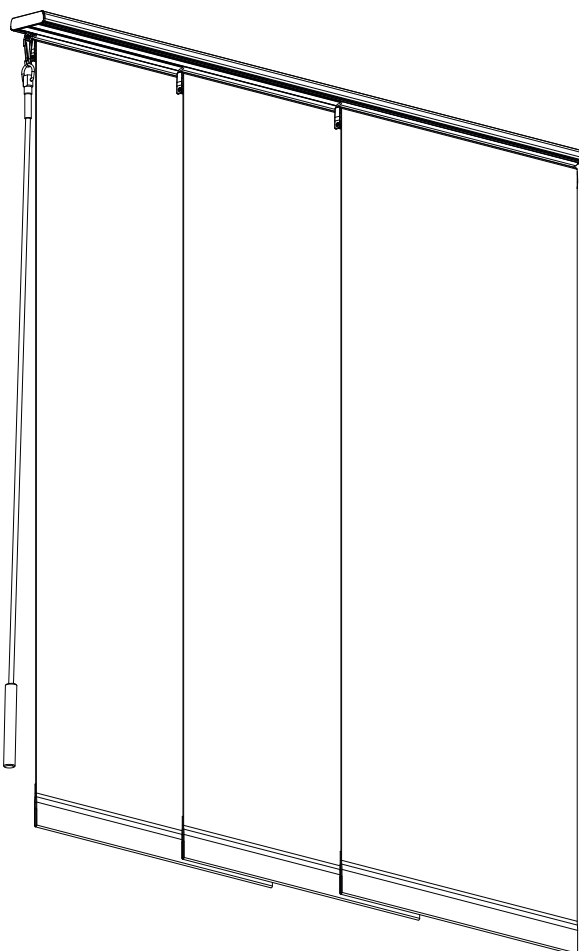
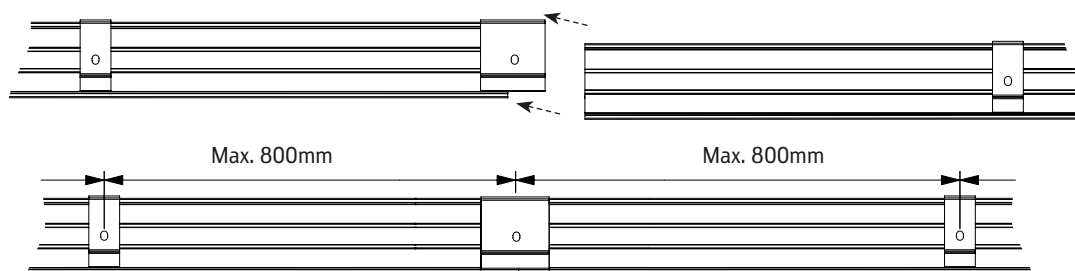




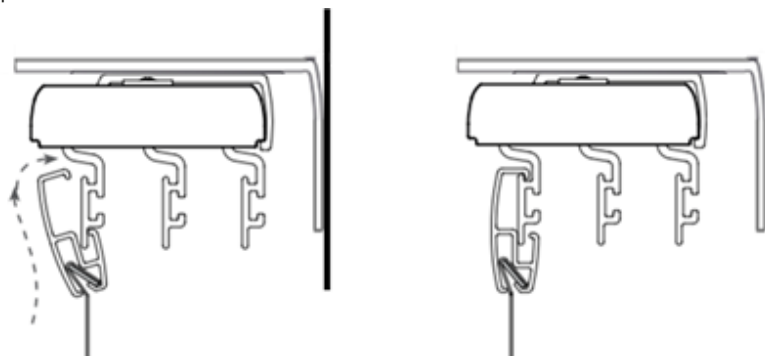
PTC35
for installation ceiling clip
on soft ceilings.



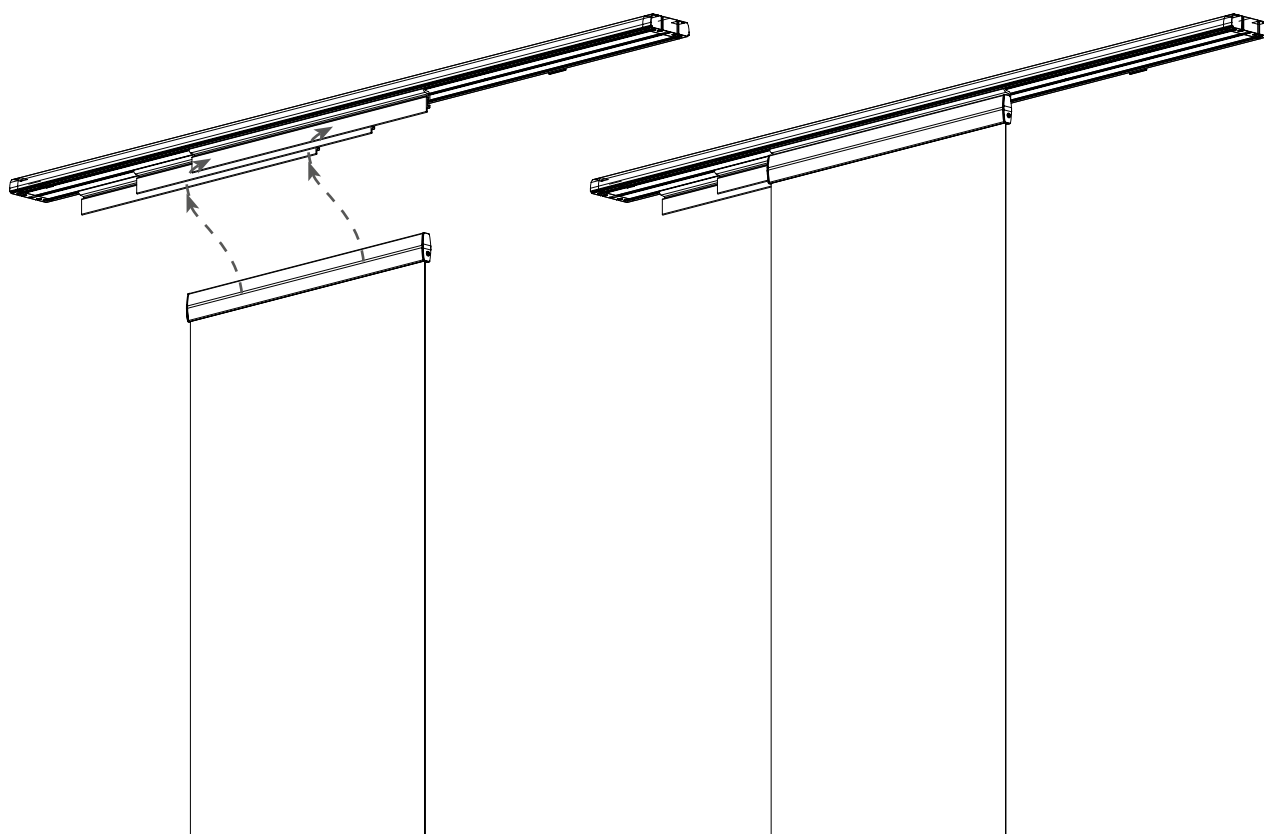
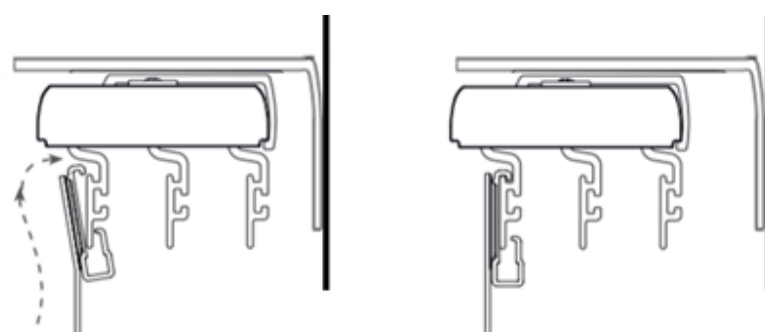
Connect headrails with connector clip PTC33C2, PTC33C3, PTC33C4, PTC33C5 or PTC33C6



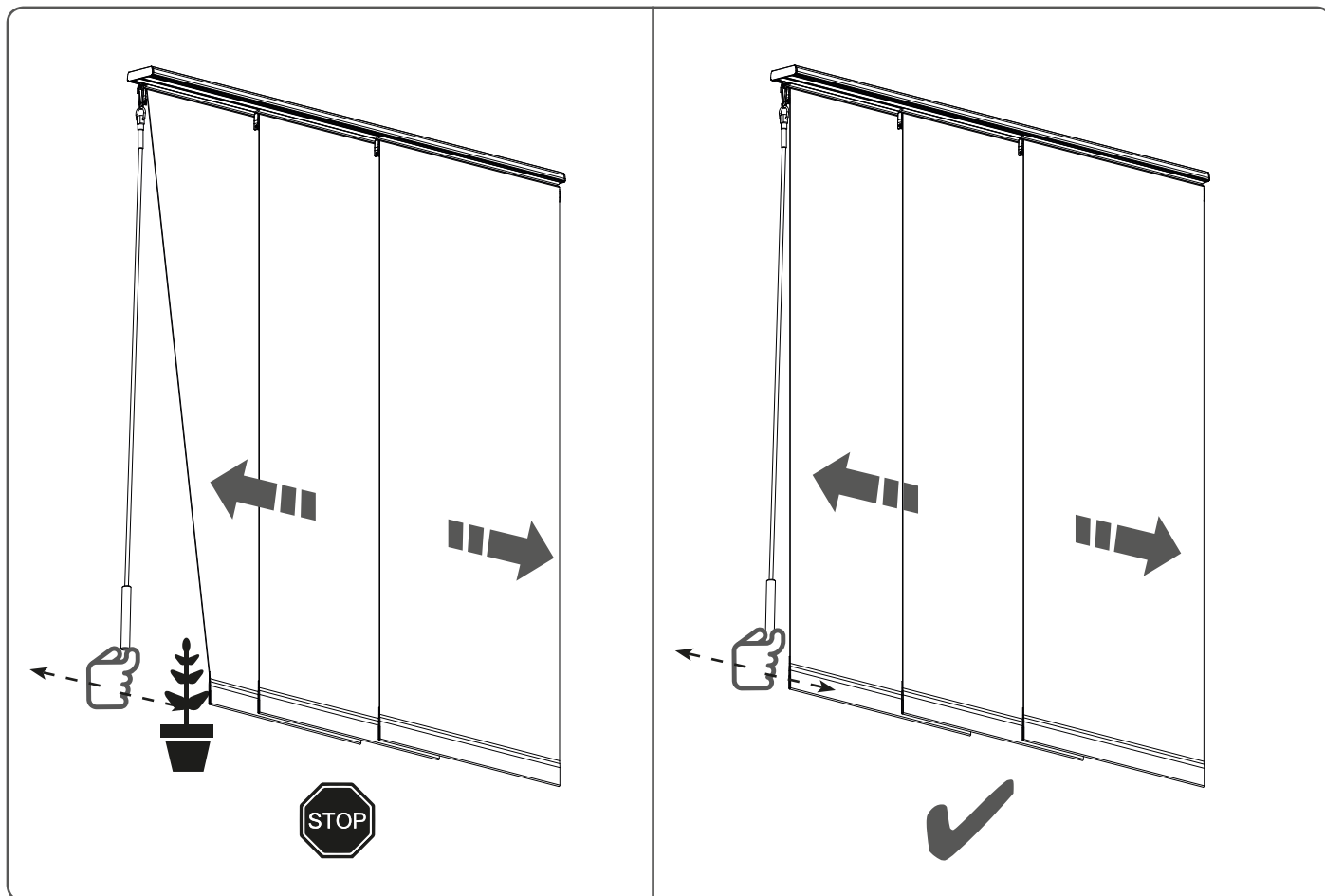
Hanging panel with holddownstrip



Hanging panel with velcro



Control



CORNICE INSTALLATION INSIDE MOUNT

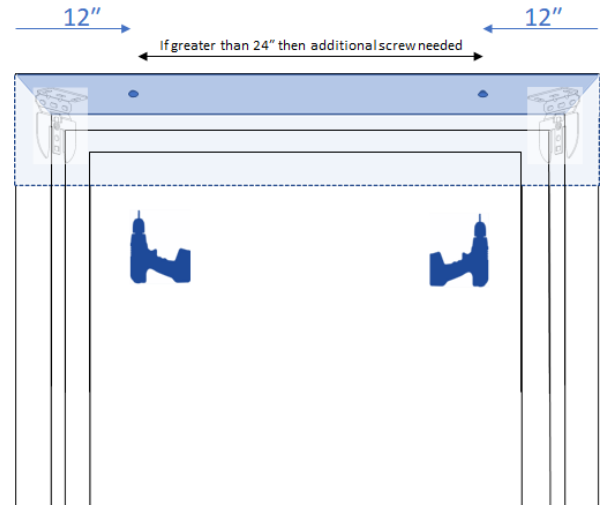
NOTE:

The brackets for your shade will come installed on the cornice (if the cornice and shade are ordered together).

Install cornice before installing the shade.

Inside Mount cornices are made 1/8" less than the ordered width of the shade.

1. Hold the cornice to the top of your window frame and set it back until it is flush with your wall or until it is touching the back of the window opening. Be sure the cornice is centered in the opening.
2. Predrill holes through the cornice for your screws:
 - a. 12" maximum from each side
 - b. Space between screws should not exceed 24"
3. Secure your cornice to the window by screwing through each hole you predrilled.
4. Once the cornice is mounted, you can then install the shade.



CORNICE INSTALLATION OUTSIDE MOUNT

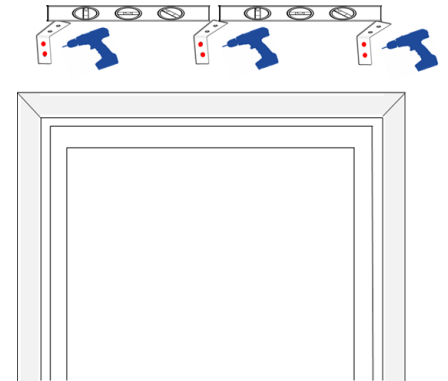
NOTE:

The brackets for your shade will come installed on the cornice (if the cornice and shade are ordered together).

Install cornice before installing the shade.

Outside Mount cornices are made 1" wider than the ordered width of the shade.

1. Make sure the surface you intend to install your cornice hardware is sturdy enough to support the brackets. You will need to screw into wood studs that are strong enough to securely bond with the included screws or you will need to use fasteners to securely support the brackets. Please note secure fasteners are not included.
2. Center the cornice over the window opening at your desired height. Mark the position of the ends of the cornice on the wall. Measure in 6" from each end and using the cornice bracket mark the screw holes with a pencil. If you have additional cornice brackets, space them evenly between the outer brackets. Make sure all the mounting brackets are level with one another.
3. Pre-drill the holes for each cornice bracket and then secure the brackets to your mounting surface.



4. Place the cornice on top of the brackets and center it to the window. Check again that the cornice is level. Hold the cornice in place and screw through the top of each bracket into the cornice.
5. Once the cornice is secured to each bracket, then you can install the shade.

