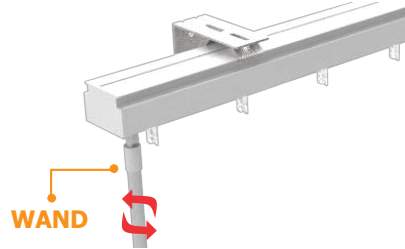


# Testing your blind

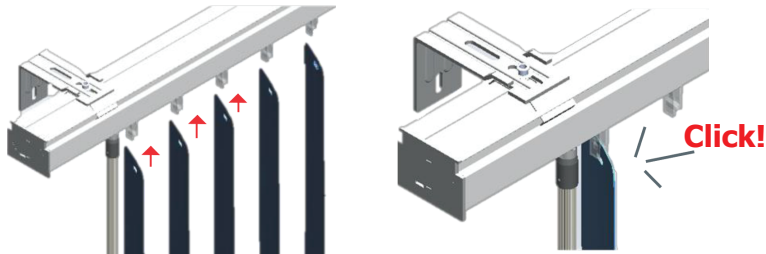
## 1 Centering the slats

Rotate the wand until the carrier stems are perpendicular to the window.



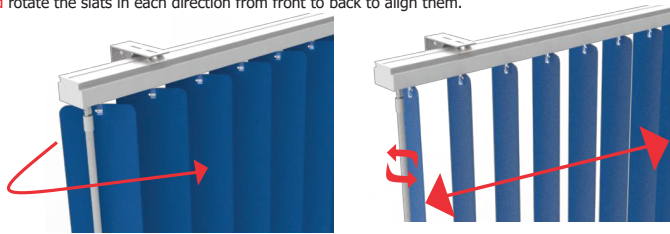
## 2 Installing the slats

Push the slat into the carrier stem then pull it slightly straight down to lock it in place and verify it has been attached properly, repeat these steps for the rest of the slats.



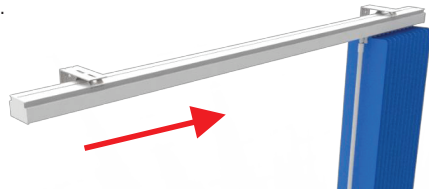
## 3 Testing the slats rotation.

Using the wand rotate the slats in each direction from front to back to align them.



## 4 Testing the sliding

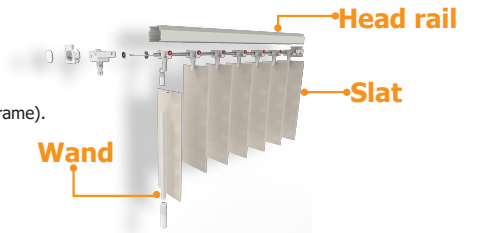
Move the wand from left to right to ensure the blind traverses smoothly in both directions. Do not traverse the blind with the slats in the closed position.



## Installation Instructions for Vertical Blind

### Before you begin your installation:

- Read all the instructions.
- All of our vertical blinds include a headrail, slats, a valance (if ordered) and one installation kit according to the size you ordered.
- Check the headrail and slats for proper width and length (deductions have been made to fit or cover your window frame).
- Make sure you have appropriate tools and hardware for the installation.
- Check the installation surface to use appropriate screws.



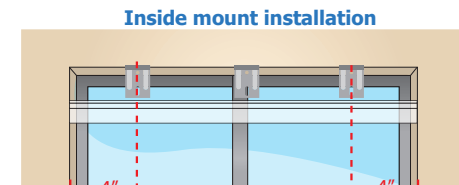
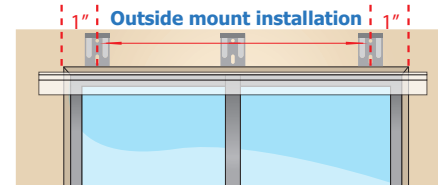
INSIDE MOUNT DEDUCTIONS	
HEADRAIL WIDTH	1/8"
SLAT HEIGHT	2"

### Tools you may need (not included)

The tools you need for installing your blinds may vary, depending on the installation surface and the mounting bracket type.



### Mark the brackets location



- Please review the table below to determine the number of brackets you will need.
- Mark a spot for all the brackets as described in the picture above.
- The brackets should be placed in a straight line that is parallel to the wall and distributed equally to hold the head rail.



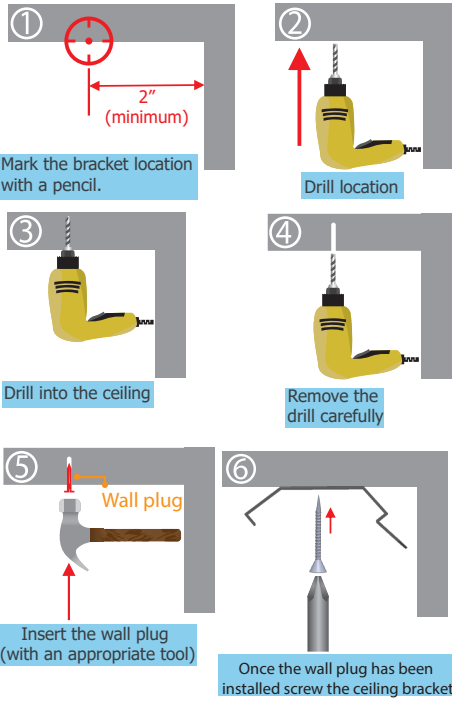
Wall and ceiling bracket table					
Head rail width in inches		# installation Brackets	Head rail width in inches		# installation Brackets
Min	Max		Min	Max	
12"	39"	2	72"	87"	5
40"	55"	3	88"	103"	6
56"	71"	4	104"	120"	7



## Installation instructions for inside mount

### Without a valance

Follow the next steps to drill and install the ceiling brackets.



Mark the bracket location with a pencil.

Drill location

Drill into the ceiling

Remove the drill carefully

Insert the wall plug (with an appropriate tool)

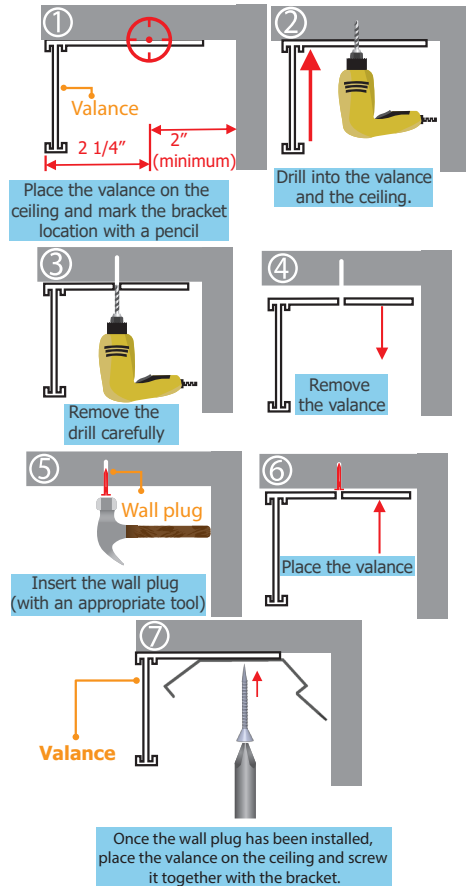
Once the wall plug has been installed screw the ceiling bracket

#### NOTE:

These drilling steps are recommended for a concrete surface otherwise use screws only or alternate fasteners.

### With a valance

Follow the next steps to drill and install the ceiling brackets and the valance.



Place the valance on the ceiling and mark the bracket location with a pencil

Drill into the valance and the ceiling.

Remove the drill carefully

Remove the valance

Insert the wall plug (with an appropriate tool)

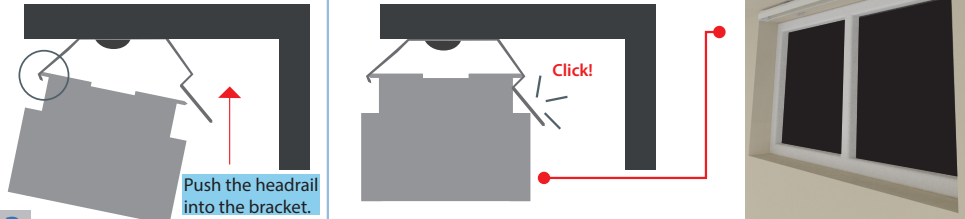
Place the valance

Valance

Once the wall plug has been installed, place the valance on the ceiling and screw it together with the bracket.

### Installing the headrail

Once the brackets have been installed, place the headrail into the brackets. Once you hear a CLICK!, the headrail has been inserted.

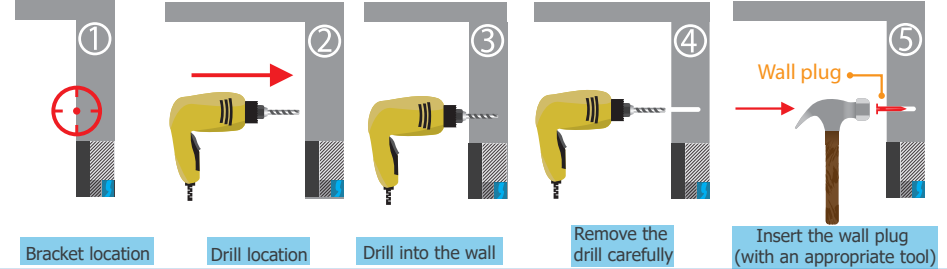


Push the headrail into the bracket.

Click!

## Installation instructions for outside mount

Follow the next steps to drill and install the wall brackets.



Bracket location

Drill location

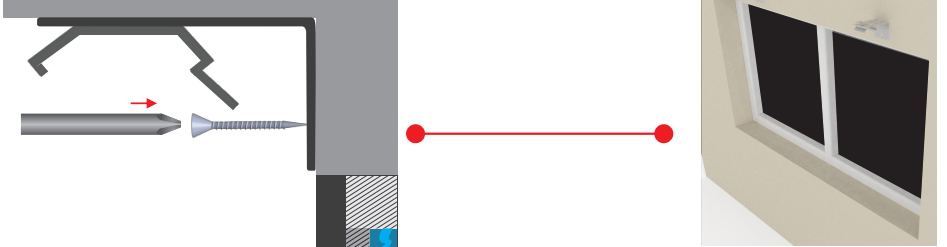
Drill into the wall

Remove the drill carefully

Insert the wall plug (with an appropriate tool)

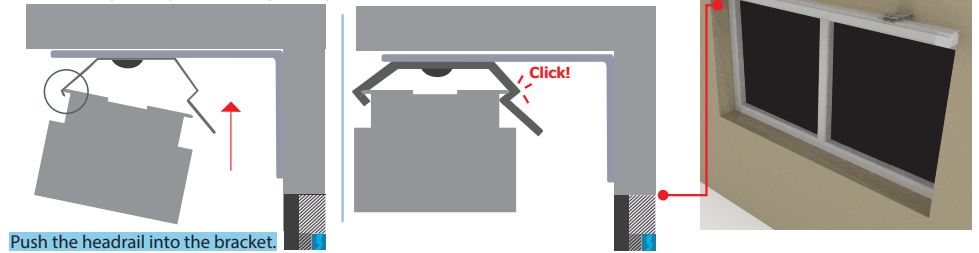
### Installing the wall brackets.

Once the wall plugs have been installed screw the wall brackets.



### Installing the headrail

Once the brackets have been installed, attach the headrail to brackets (see the pictures below). Once you hear a CLICK!, the headrail has been inserted.



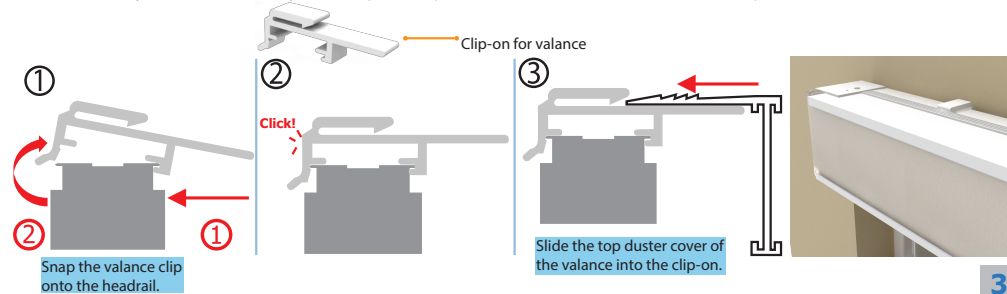
Push the headrail into the bracket.

Click!

NOTE: These drilling steps are recommended for a concrete surface otherwise use screws only or alternate fasteners.

### If you need to install your blind outside the window frame with a valance

If you ordered a valance, you should put the clip-ons close to each installation bracket (see the pictures below).



1

2

3

Clip-on for valance

Click!

Snap the valance clip onto the headrail.

Slide the top duster cover of the valance into the clip-on.