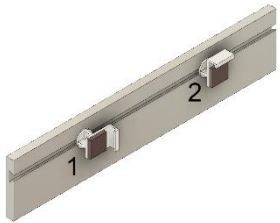


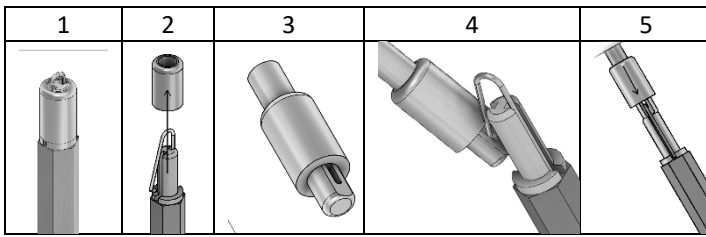
VALANCE



[1] Insert each Magnetic Valance Clip in the slot behind the wood valance and spread them evenly along the valance slot. [2] Turn the Valance Clips Up. Hang the Valance from the top of Headrail.

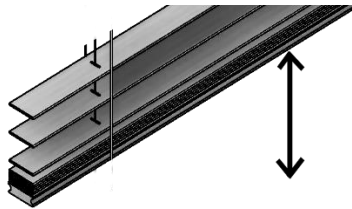
WAND INSTALLATION

Please follow the following instructions.



1. The wand is shipped like this
2. Pull out the Wand Tip cover
3. Insert the Wand Tip Cover into the Wand Tilter
4. Insert the wire hook into the eyelet in the Wand Tilter
5. Pull down the Cover to secure the hook in place

BLIND OPERATION



To raise or lower the blind, gently hold the center of the Bottom Rail and either push up to lift or pull down to lower the blind

ALIGNMENT

After installing the blind, tilt the slats to the open position, then raise and lower the blind several times. This motion will allow the cords and slats to properly align themselves.

Installation Instructions for Cordless Wood Blinds

Installation Overview

To mount your wood blind, you will need to screw the Mounting Brackets on your window, insert the blind headrail into the brackets and attach the Valance and any other component not attached to the blind.

Before installation, check the headrail for proper width. If your order is for several blinds, be sure to match them with the appropriate window.

Keep the blind stacked as received until you finish the installation.

TOOLS YOU WILL NEED

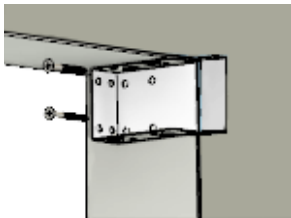
Pencil, Level, Phillips Screwdriver, Power Drill

Bracket Installation

All blinds require two End Brackets to hold a blind. If the blind is 54" or greater in width, one or more Center Support Brackets will be required. Some blinds will require to install Spacer Blocks and/or Bracket Shims. Screws and all additional installation parts are included in the Hardware Box.

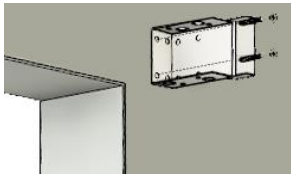
Blinds with Cloth Tapes (Ladder Tapes) must be installed with a Shim Bracket. All blinds with 2 ½" Slats or wider, must be installed with a Spacer Block

INSIDE MOUNT



Open the bracket by applying pressure on the latch. Brackets can be installed either Left or Right. Screw into the window frame through the holes on the inside of the bracket as shown. Always use at least two screws per bracket. Screws mounted horizontally will have more strength.

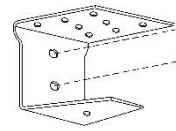
OUTSIDE MOUNT



Measure the headrail length and mark with a pencil on the wall the position where the ends of the headrail will be located. Be sure these marks are centered on the window and use the level to determine the vertical position. Now, mark the position of the End Brackets, ¼" outside of the headrail marks. These will be the outside position of the End Brackets. Attach the brackets against the wall with the provided screws

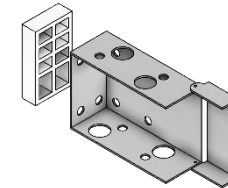
Attach the brackets against the wall with the provided screws

CENTER SUPPORT BRACKETS



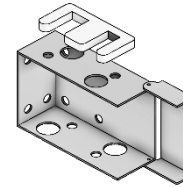
If required, space these brackets evenly alongside the headrail. For Inside Mount, attach to the window frame with screws in the vertical direction; for Outside Mount, be sure they are leveled with the End Brackets and screw them against the wall.

SPACER BLOCKS



These are included on all blinds with slats of 2 ½" or more with the purpose of separating the blind from the glass (Inside Mount) or the wall (Outside Mount). They are installed behind the End Brackets.

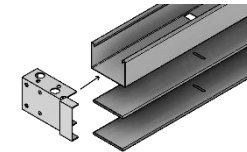
SHIMS



In Inside Mount installations, blinds with Cloth Tapes (Ladder Tapes) need more space between the top of the headrail and the window frame. These Shims, are installed above the End Brackets to provide extra room.

Final Assembly

INSERT BLIND IN BRACKETS



With the End Brackets open, insert one end first and then the other. Close the Bracket latch, until the locking tab clicks into place.